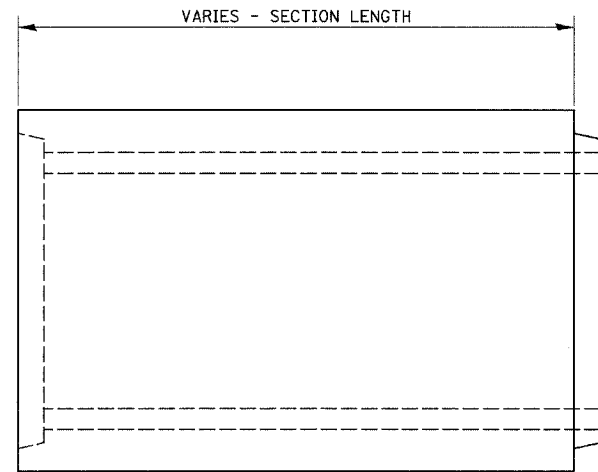
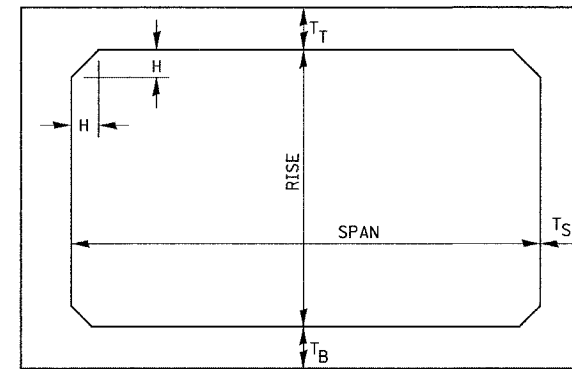


F.A.P. RTE.	SECTION	COUNTY	TOTAL SHEETS	SHEET NO.
41	12 I	KANKAKEE	21	12
STA. _____		TO STA. _____		
FED. ROAD DIST. NO. _____		ILLINOIS FED. AID PROJECT		



**ELEVATION**



NOTE: THE HAUNCH DIMENSION H, IS EQUAL TO THE WALL THICKNESS T<sub>S</sub>.

**TYPICAL BOX SECTION**

SPAN, FEET	T <sub>T</sub> , INCHES		T <sub>B</sub> , INCHES		T <sub>S</sub> , INCHES	
	M 259	M 273	M 259	M 273	M 259	M 273
3	4	7	4	6	4	4
4	5	7 1/2	5	6	5	5
5	6	8	6	7	6	6
6	7	8	7	7	7	7
7	8	8	8	8	8	8
8	8	8	8	8	8	8
9	9	9	9	9	9	9
10	10	10	10	10	10	10
11	11	11	11	11	11	11
12	12	12	12	12	12	12

**TYPICAL THICKNESSES**

**GENERAL NOTES:**

MINIMUM COVER FOR BOX CULVERTS SHALL BE 6".

REVISIONS	
NAME	DATE

ILLINOIS DEPARTMENT OF TRANSPORTATION  
**PRECAST CONCRETE  
 BOX SECTION**  
 FAP 41 (IL 17)  
 SECTION 12 I  
 KANKAKEE COUNTY

SCALE: VERT.  
 HORIZ.  
 DATE: 10/07

DRAWN BY: LAG  
 CHECKED BY: JKC