

F.A.P. RTE.	SECTION	COUNTY	TOTAL SHEETS	SHEET NO.
338	33 BR-1	IROQUOIS	27	1

STATE OF ILLINOIS  
DEPARTMENT OF TRANSPORTATION  
DIVISION OF HIGHWAYS  
**PROPOSED  
HIGHWAY PLANS**

F.A.S. 338 (U.S. ROUTE 45)  
SECTION 33 BR-1  
PROJECT BRS-0338(105)  
IROQUOIS COUNTY

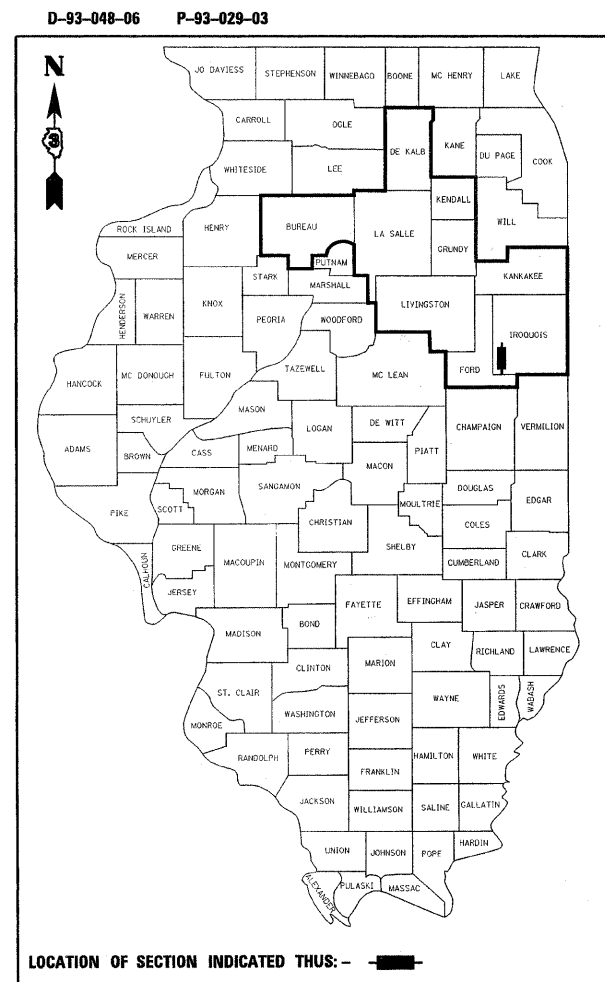
C-93-067-07

CULVERT REPLACEMENT OVER A DITCH,  
SOUTH EDGE OF LODA

**INDEX OF SHEETS**

1	COVER SHEET
2	STATE STANDARDS, GENERAL NOTES & COMMITMENTS
3	SUMMARY OF QUANTITIES
4-5	TYPICAL SECTIONS
6	SCHEDULE OF QUANTITIES
7	SURVEY TIES AND BENCHMARKS
8-9	PLAN & PROFILE SHEETS
10	DETOUR PLANS
11	EROSION CONTROL PLAN
12	RIGHT-OF-WAY PLAN
13-22	CULVERT PLANS S.N. 038-2018
23	MISCELLANEOUS DETAILS
24-27	CROSS SECTIONS

FOR LIST OF STANDARDS, SEE SHEET NO. 2



**DESIGN DESIGNATION**

SPEED LIMIT: 55 MPH  
ADT = 3450 (2007) 4500 (2027)  
PV = 88%  
SU = 8%  
MU = 4%

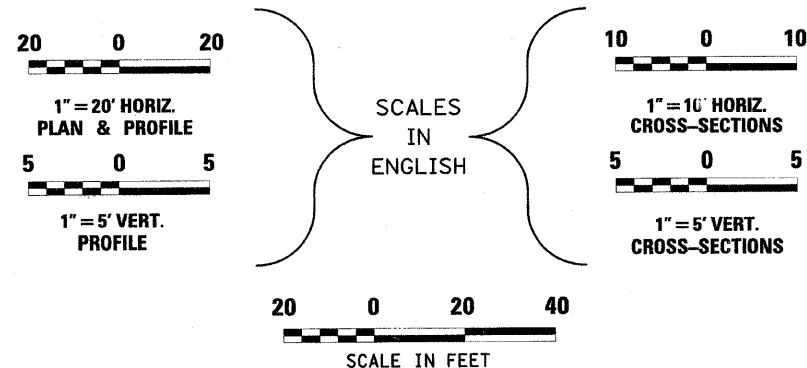
**HIGHWAY CLASSIFICATION**

MAJOR COLLECTOR (RURAL)

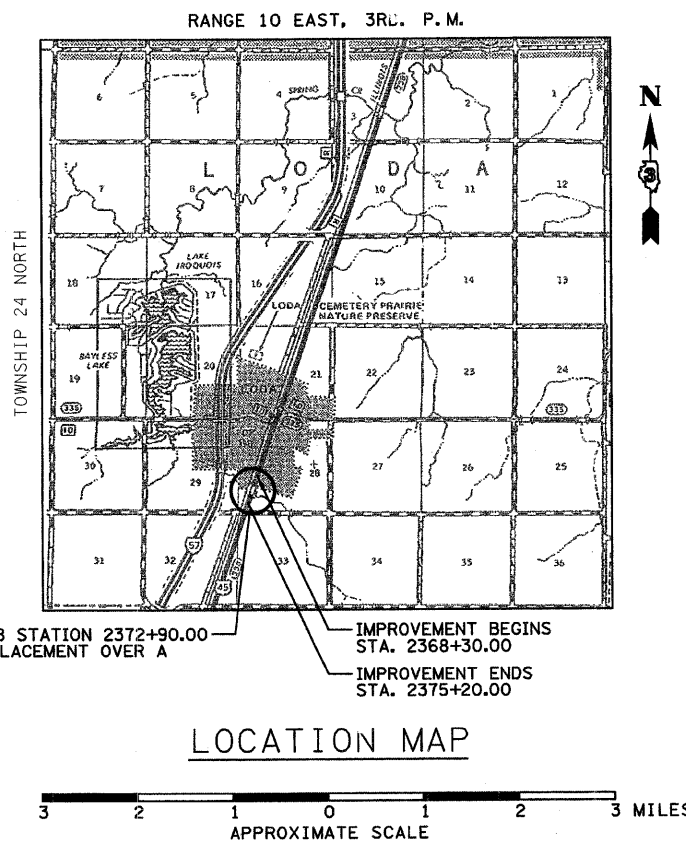
STATE OF ILLINOIS  
DEPARTMENT OF TRANSPORTATION  
DIVISION OF HIGHWAYS

SUBMITTED 12/13 2007  
*George E. Ryan*  
DEPUTY DIRECTOR OF HIGHWAYS, REGION ENGINEER  
February 1, 2008  
*Eric E. Harn*  
ENGINEER OF DESIGN AND ENVIRONMENT  
February 1, 2008  
*Christina M. Reed*  
DIRECTOR OF HIGHWAYS, CHIEF ENGINEER

**PRINTED BY THE AUTHORITY  
OF THE STATE OF ILLINOIS**



FULL SIZE PLANS HAVE BEEN PREPARED USING STANDARD  
ENGINEERING SCALES, REDUCED SIZED PLANS WILL NOT  
CONFORM TO STANDARD SCALES, IN MAKING MEASUREMENTS  
ON REDUCED PLANS, THE ABOVE SCALES MAY BE USED.



S.N. 038-2018 STATION 2372+90.00  
CULVERT REPLACEMENT OVER A  
DITCH

IMPROVEMENT BEGINS  
STA. 2368+30.00

IMPROVEMENT ENDS  
STA. 2375+20.00

LOCATION MAP



GROSS LENGTH = 690 FT. = 0.131 MI.  
NET LENGTH = 690 FT. = 0.131 MI.

MICROFILMED \_\_\_\_\_  
REEL NUMBER \_\_\_\_\_  
AWARDED \_\_\_\_\_  
RESIDENT ENGINEER \_\_\_\_\_  
AS BUILT CHANGES WERE MADE  
ON THE FOLLOWING SHEETS \_\_\_\_\_

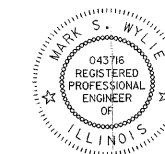
J.U.L.I.E.  
JOINT UTILITY LOCATION INFORMATION FOR EXCAVATION  
1-800-892-0123

DISTRICT 3 NO. (815) 434-6131

PROJECT ENGINEER: JOSEPH KANNEL  
UNIT CHIEF: MICHELE LINDEMANN

CONTRACT NO. 66717

**Farnsworth  
GROUP**  
2709 McGraw Drive  
Bloomington, Illinois 61704  
309/663-8435, 309/663-1571 fax



*Mark S. Wylie* Date 12/21/07  
MARK S. WYLIE  
REGISTERED PROFESSIONAL ENGINEER  
NO. 062-043716  
EXPIRATION 11/30/09

DATE: 12/13/07  
DRAWN: SPEC