

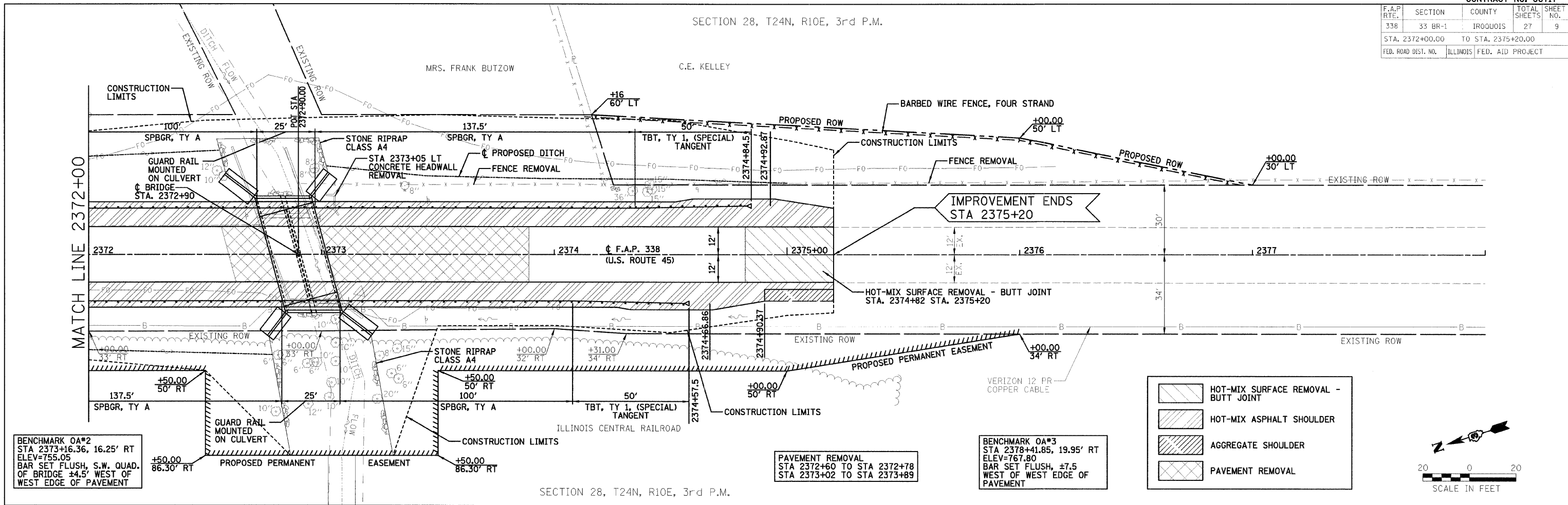
F.A.P. RTE.	SECTION	COUNTY	TOTAL SHEETS	SHEET NO.
338	33 BR-1	IROQUOIS	27	9
STA. 2372+00.00 TO STA. 2375+20.00				
FED. ROAD DIST. NO. ILLINOIS FED. AID PROJECT				

SECTION 28, T24N, R10E, 3rd P.M.

DATE	BY
DATE	BY
DATE	BY

DATE	BY
DATE	BY
DATE	BY

PLOT DATE = 8/24/18
 FILE NAME = 8FILE18
 PLOT SCALE = 8SCALE8
 USER NAME = 8USER8



BENCHMARK OA*2
 STA 2373+16.36, 16.25' RT
 ELEV=755.05
 BAR SET FLUSH, S.W. QUAD.
 OF BRIDGE ±4.5' WEST OF
 WEST EDGE OF PAVEMENT

PAVEMENT REMOVAL
 STA 2372+60 TO STA 2372+78
 STA 2373+02 TO STA 2373+89

BENCHMARK OA*3
 STA 2378+41.85, 19.95' RT
 ELEV=767.80
 BAR SET FLUSH, ±7.5
 WEST OF WEST EDGE OF
 PAVEMENT

	HOT-MIX SURFACE REMOVAL - BUTT JOINT
	HOT-MIX ASPHALT SHOULDER
	AGGREGATE SHOULDER
	PAVEMENT REMOVAL

