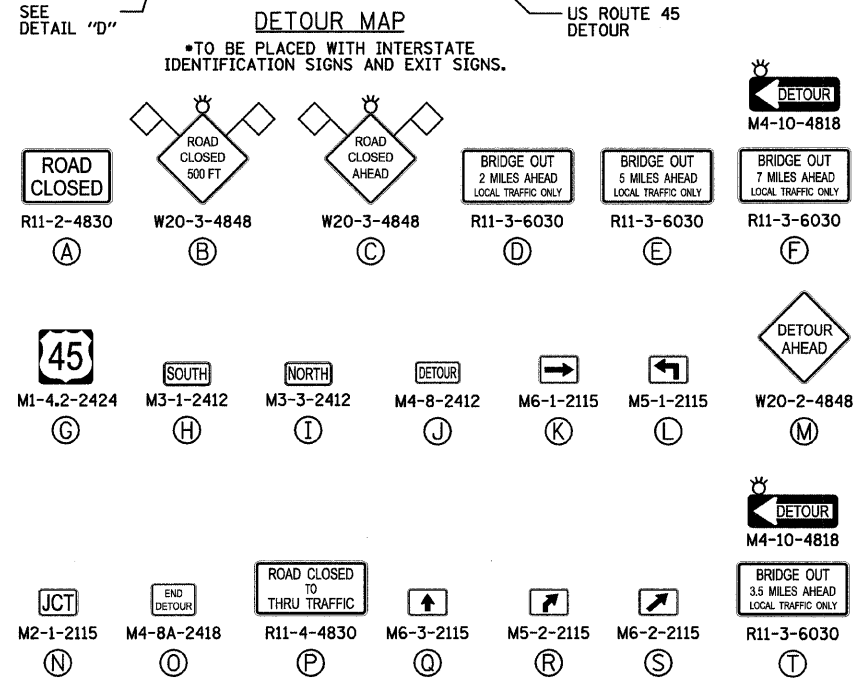
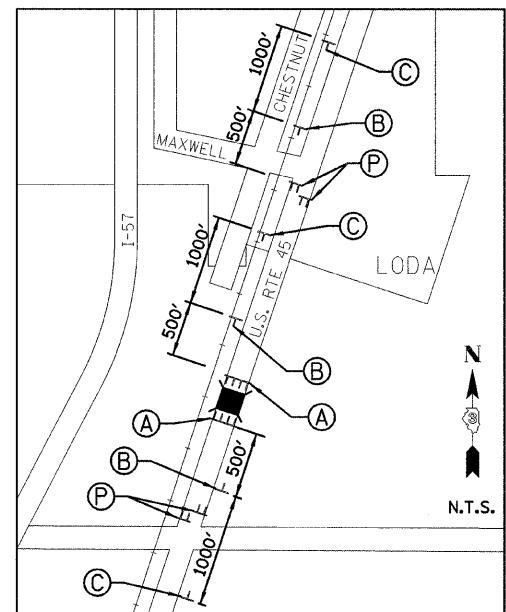
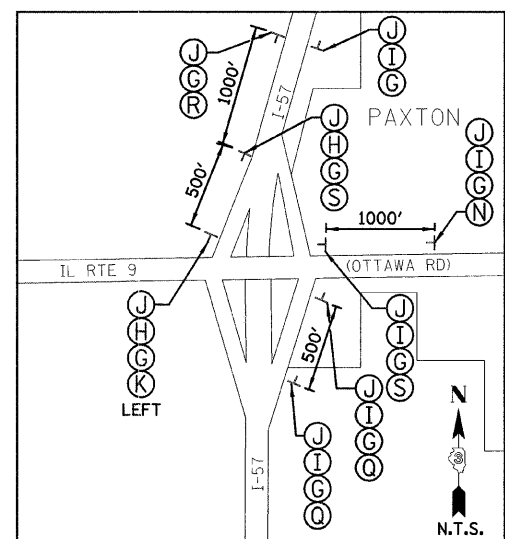
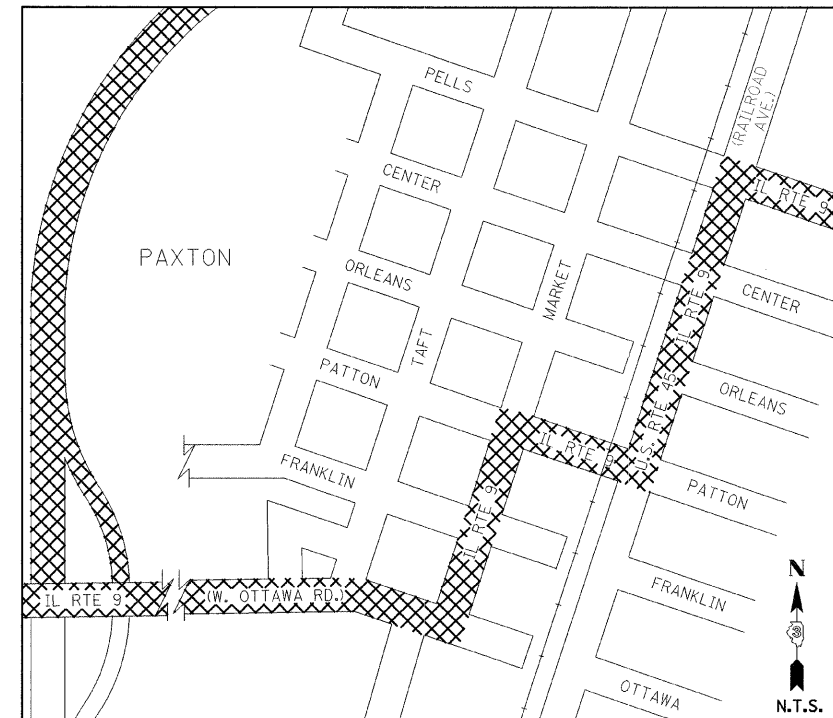
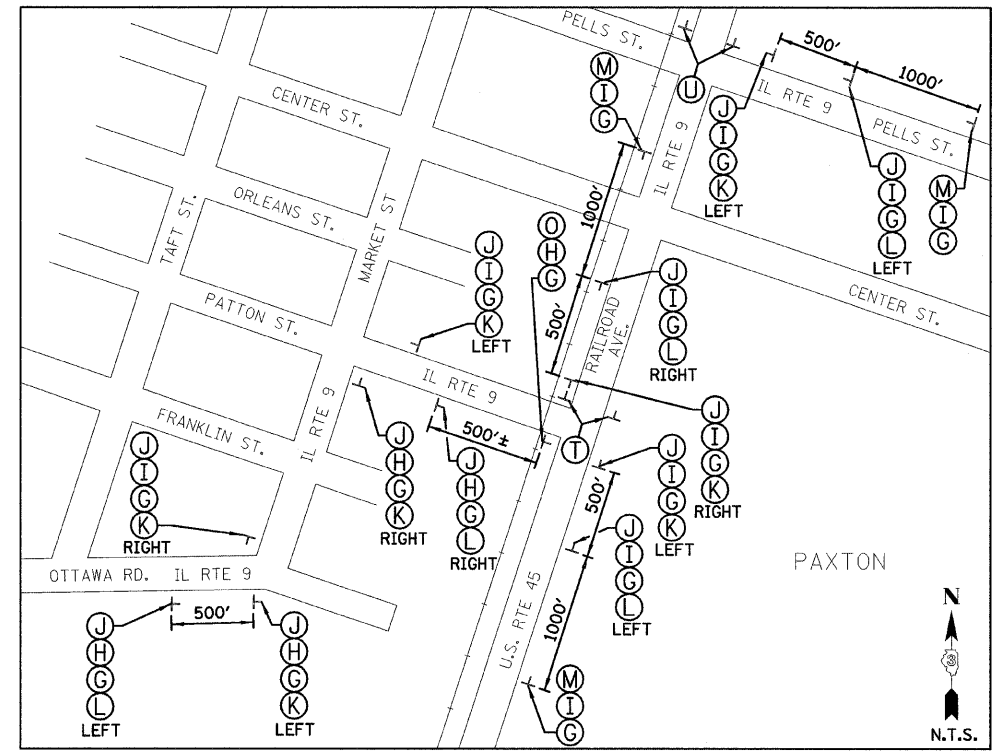
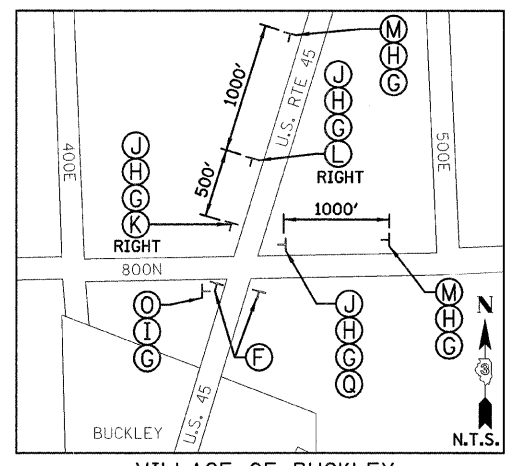
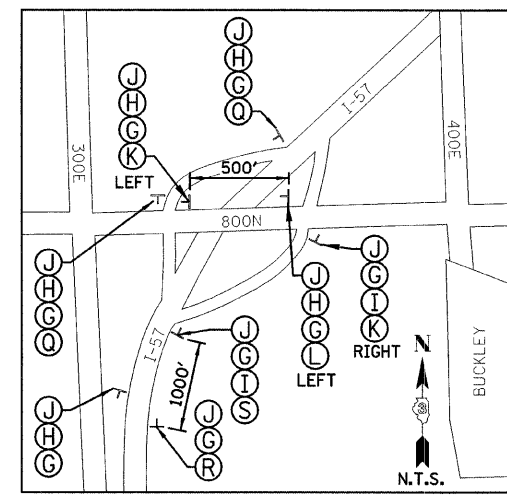
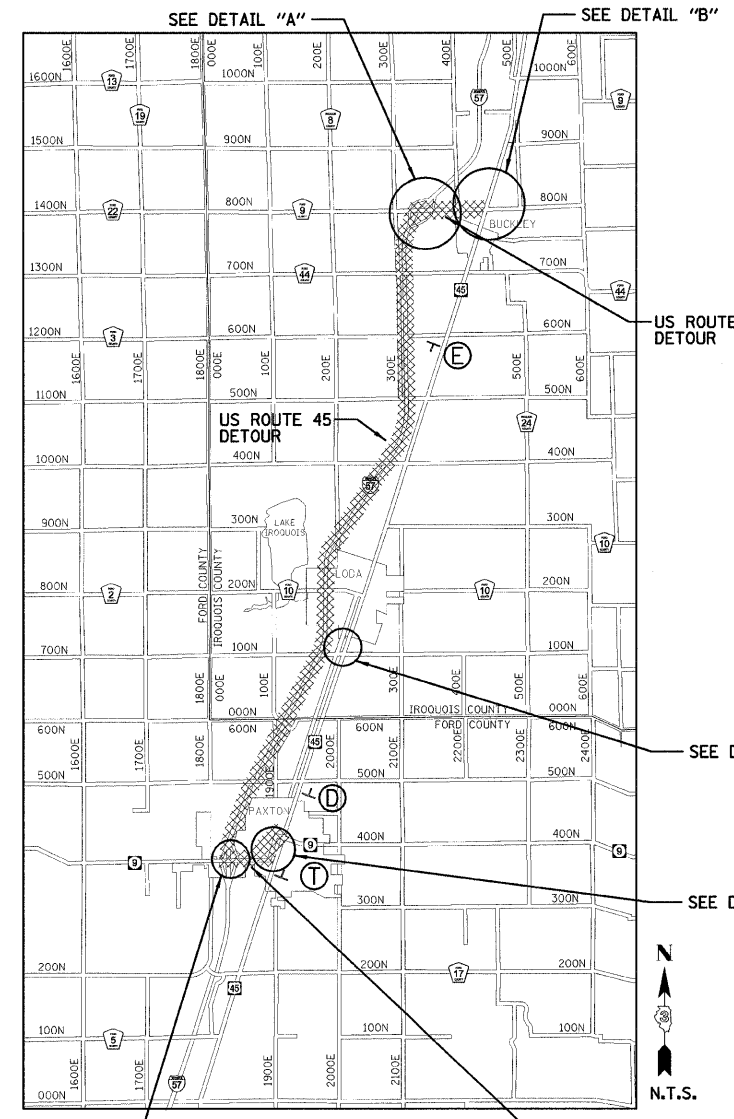


F.A.P. RTE.	SECTION	COUNTY	TOTAL SHEETS	SHEET NO.
338	33 BR-1	IROQUOIS	27	10
STA.	TO STA.			
FED. ROAD DIST. NO.	ILLINOIS	FED. AID PROJECT		



LEGEND

- ⊥ TYPE III BARRICADES CONFORMING TO STD. 702001 "ROAD CLOSED TO ALL TRAFFIC" WITH 2 FLASHING LIGHTS PER BARRICADE
- ⊥ TYPE III BARRICADES CONFORMING TO STD. 702001 "ROAD CLOSED TO THRU TRAFFIC" WITH 2 FLASHING LIGHTS PER BARRICADE
- ⊥ SIGNS ON PERMANENT SUPPORTS
- ⊙ FLASHING LIGHT ABOVE SIGN
- ◊ 18"x18" ORANGE FLAG
- ▨ DETOUR ROUTE

NOTES:

- 1.) ALL TRAFFIC CONTROL DEVICES SHALL BE FURNISHED, ERECTED AND MAINTAINED BY THE CONTRACTOR.
- 2.) ALL SIGNS NOT ATTACHED TO BARRICADES SHALL BE POST MOUNTED, UNLESS OTHERWISE NOTED.
- 3.) LOCATIONS OF TRAFFIC CONTROL DEVICES MAY BE ADJUSTED BY THE ENGINEER.
- 4.) THE ILLINOIS DEPARTMENT OF TRANSPORTATION WILL SUPPLY ALL US 45 SIGNS FOR THIS DETOUR. THE CONTRACTOR SHALL NOTIFY DISTRICT 3 BUREAU OF OPERATIONS 21 CALENDAR DAYS PRIOR TO PLACING THE DETOUR.
- 5.) WORK SHALL BE DONE IN ACCORDANCE WITH BLR-21.
- 6.) COVER ANY SIGNS DENOTING WITHIN A MILE RADIUS OF THE INTERSECTION BETWEEN US ROUTE 45 AND COUNTY HIGHWAY 9. COVER ANY SIGNS DENOTING NORTH US ROUTE 45 WITHIN A MILE RADIUS OF THE INTERSECTION WITH US ROUTE 45 AND IL ROUTE 9.
- 7.) ON IL ROUTE 9 WESTBOUND, THE GREENBOARD DIRECTIONAL SIGN FOR GILMAN SHALL BE COVERED.

REVISIONS		ILLINOIS DEPARTMENT OF TRANSPORTATION DETOUR PLANS F.A.P. 338 (US 45) OVER A DITCH SECTION 33 BR-1 IROQUOIS COUNTY
NAME	DATE	
		DATE: 12/07/07 DRAWN BY: DJM CHECKED BY: MSW