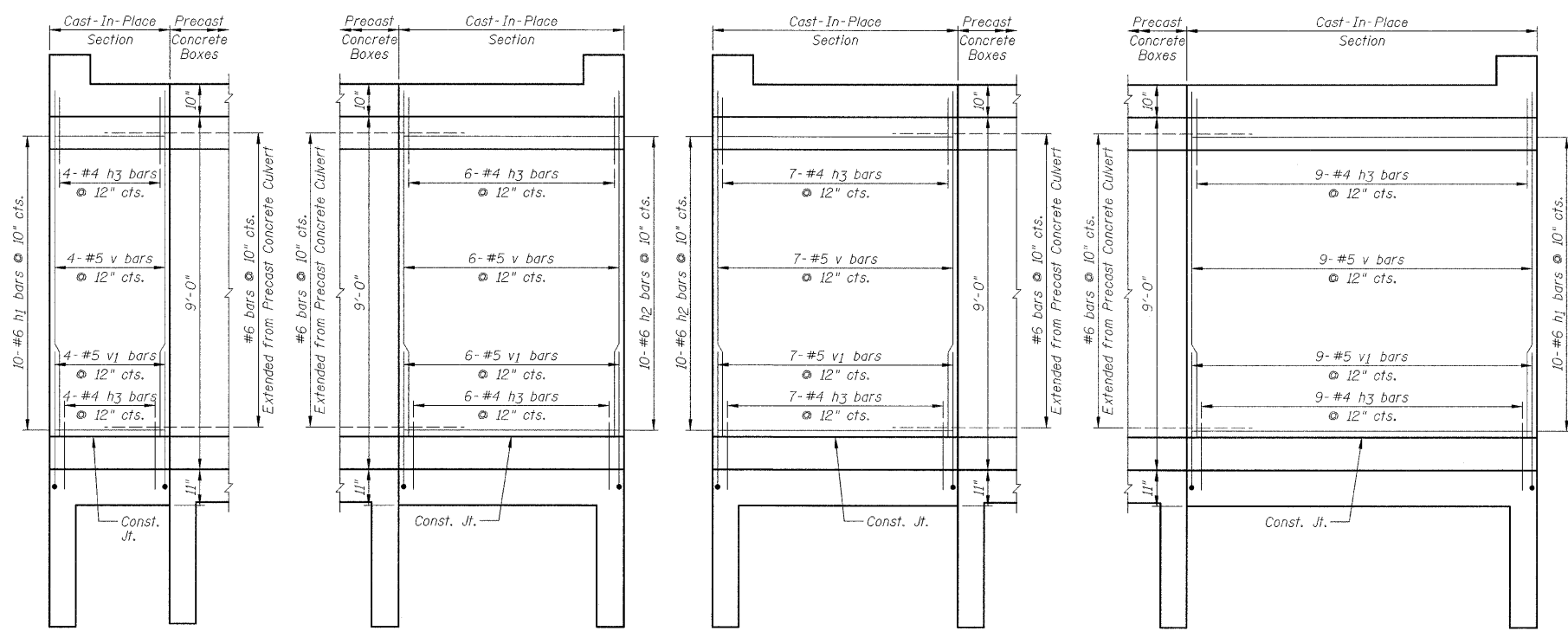


STATE OF ILLINOIS
DEPARTMENT OF TRANSPORTATION

F.A.P. RTE.	SECTION	COUNTY	TOTAL SHEETS	SHEET NO.
338	33 BR-1	IROQUOIS	27	15
STA.	TO STA.			
FED. ROAD DIST. NO.	ILLINOIS	FED. AID PROJECT		

SHEET NO. B3
OF 10 SHEETS

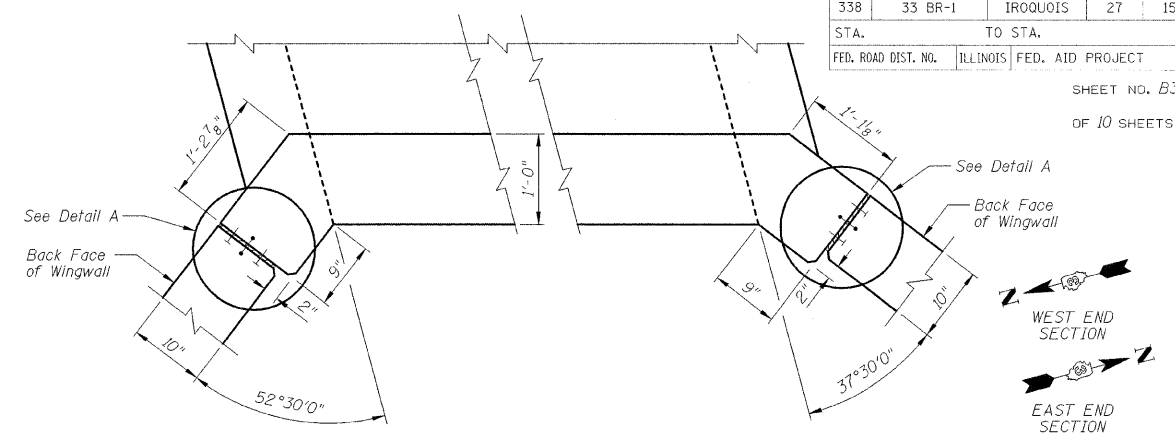


EXTERIOR WALL ELEVATION (SHORT)

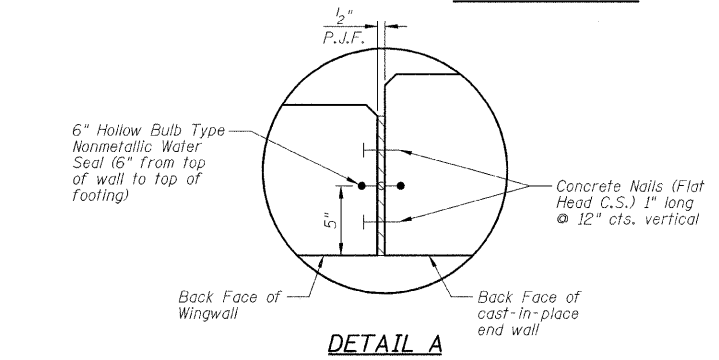
INTERIOR WALL ELEVATION (SHORT)

INTERIOR WALL ELEVATION (LONG)

EXTERIOR WALL ELEVATION (LONG)



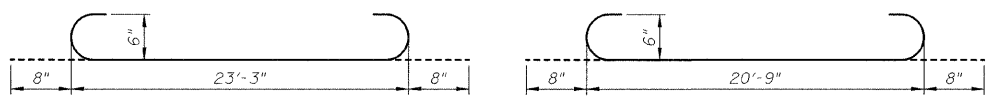
CORNER DETAIL



DETAIL A

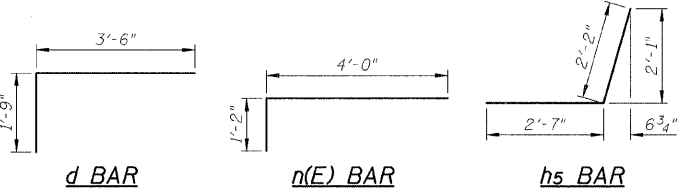
BILL OF MATERIAL

Bar	No.	Size	Length	Shape
a	12	#6	24'-7"	U
a1	24	#6	23'-3"	—
a2	20	#6	7'-0"	—
a3	12	#6	22'-1"	U
a4	24	#6	24'-5"	—
d	74	#4	5'-3"	L
h	144	#5	11'-8"	—
h1	20	#6	11'-8"	—
h2	20	#6	11'-8"	—
h3	104	#4	2'-6"	—
h4	6	#5	24'-1"	—
h5	6	#5	4'-9"	—
h6	6	#5	10'-11"	—
h7	8	#5	23'-2"	—
h8	40	#4	11'-10"	—
h9	40	#4	15'-4"	—
n(E)	64	#7	5'-2"	L
s	24	#4	4'-7"	U
s1	24	#4	4'-5"	U
t	172	#4	6'-11"	—
v	52	#5	8'-10"	—
v1	52	#5	4'-5"	—
v2	14	#5	21'-0"	—
v3	4	#4	21'-0"	—
v4	18	#5	21'-0"	—
v5	5	#4	21'-0"	—
w	32	#4	11'-10"	—
w1	32	#4	15'-4"	—
Item	Unit	Quantity		
Reinforcement Bars	Pound	9890		
Reinforcement Bars, Epoxy Coated	Pound	680		
Name Plates	Each	1		
Concrete Box Culverts	Cu Yd	81.5		



a BAR

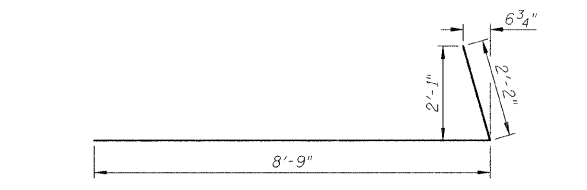
a3 BAR



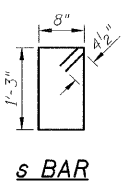
d BAR

n(E) BAR

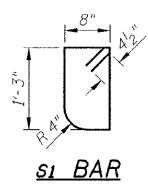
h5 BAR



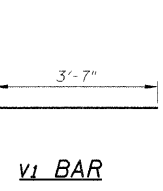
h6 BAR



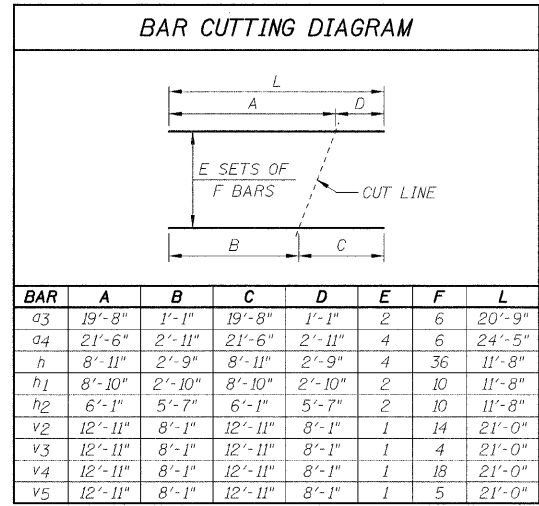
s BAR



s1 BAR

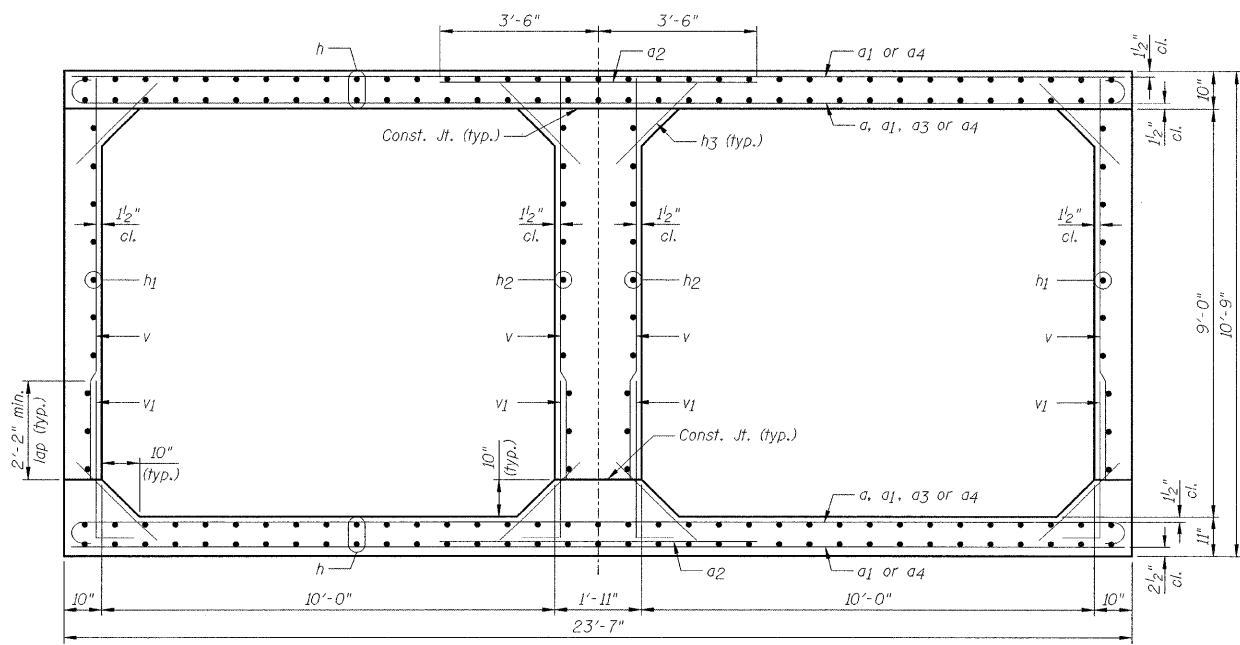


v1 BAR



BAR	A	B	C	D	E	F	L
a3	19'-8"	1'-1"	19'-8"	1'-1"	2	6	20'-9"
a4	21'-6"	2'-11"	21'-6"	2'-11"	4	6	24'-5"
h	8'-11"	2'-9"	8'-11"	2'-9"	4	36	11'-8"
h1	8'-10"	2'-10"	8'-10"	2'-10"	2	10	11'-8"
h2	6'-1"	5'-7"	6'-1"	5'-7"	2	10	11'-8"
v2	12'-11"	8'-1"	12'-11"	8'-1"	1	14	21'-0"
v3	12'-11"	8'-1"	12'-11"	8'-1"	1	4	21'-0"
v4	12'-11"	8'-1"	12'-11"	8'-1"	1	18	21'-0"
v5	12'-11"	8'-1"	12'-11"	8'-1"	1	5	21'-0"

Note: "L" dimension does not take into account the hook length for the hooked bar a3.



SECTION THRU CAST-IN-PLACE CONCRETE BARREL

NOTES:

- 1.) Tilt hook of a bars and a3 bars if necessary to provide the clearance specified.
- 2.) Order h1 bars full length, cut according to Bar Cutting Diagram. Use remainder of bar in opposite exterior wall.
- 3.) Order h2 bars full length, cut according to Bar Cutting Diagram. Use remainder of bar in opposite mat.

REVISIONS	
NAME	DATE

ILLINOIS DEPARTMENT OF TRANSPORTATION
CAST-IN-PLACE CONCRETE CULVERT
SECTION, DETAILS AND BILL OF MATERIAL
F.A.P. 338 (US 45) OVER A DITCH
SECTION 33 BR-1
IROQUOIS COUNTY
STATION 2372+90.00
STRUCTURE NO. 038-2018
DESIGNED BY: JML
DATE: 12/07/07
DRAWN BY: DJM
CHECKED BY: MSW