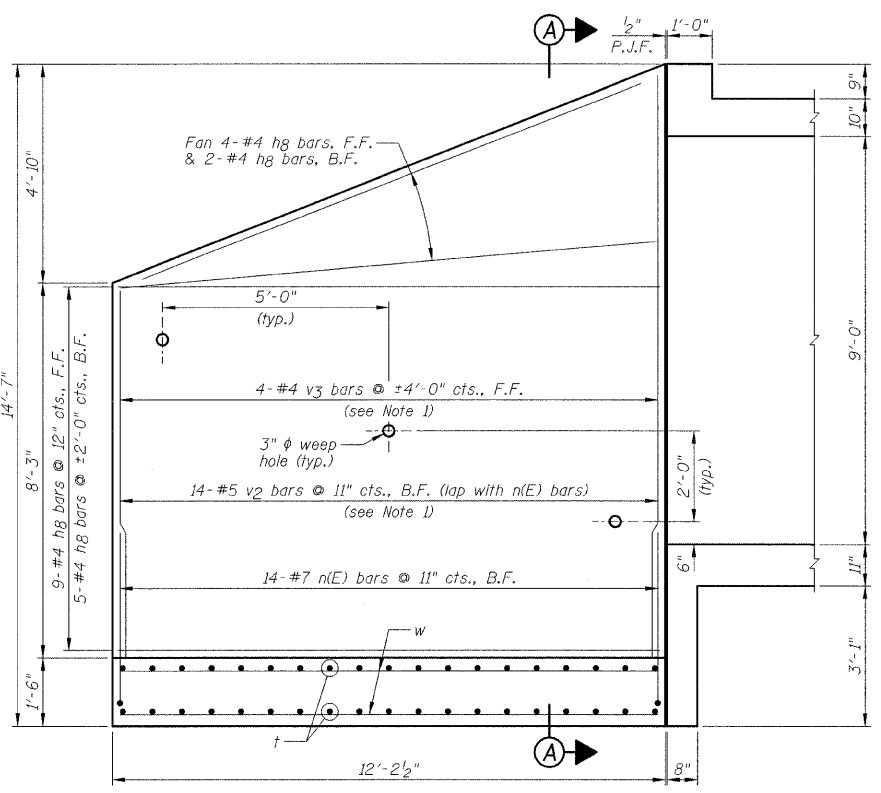


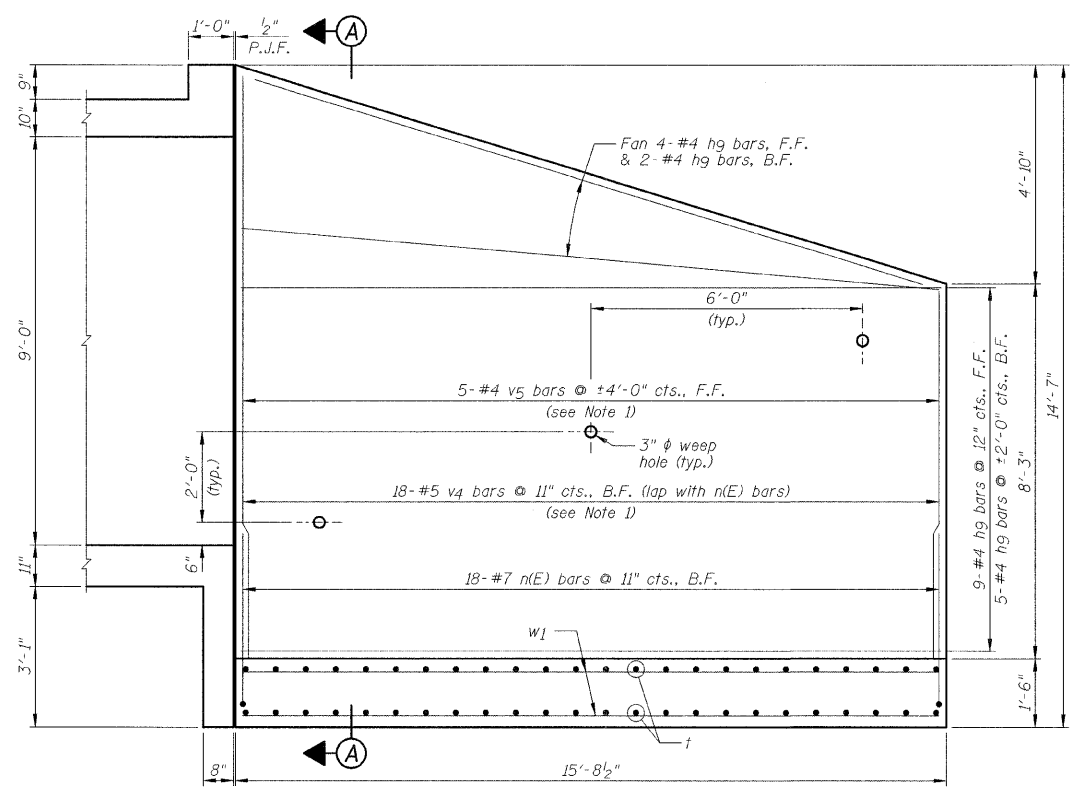
F.A.P. RTE.	SECTION	COUNTY	TOTAL SHEETS	SHEET NO.
338	33 BR-1	IROQUOIS	27	18
STA.		TO STA.		
FED. ROAD DIST. NO.		ILLINOIS FED. AID PROJECT		

SHEET NO. B6  
OF 10 SHEETS

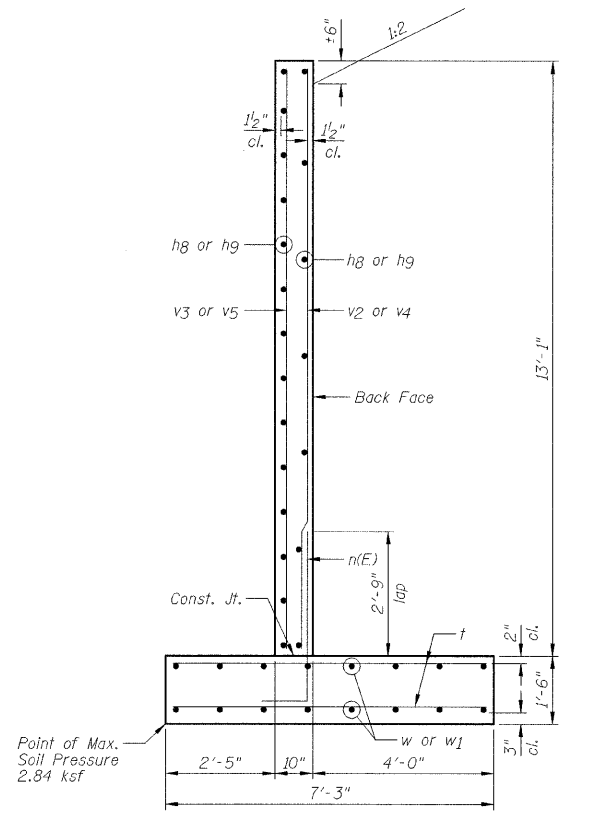
STATE OF ILLINOIS  
DEPARTMENT OF TRANSPORTATION



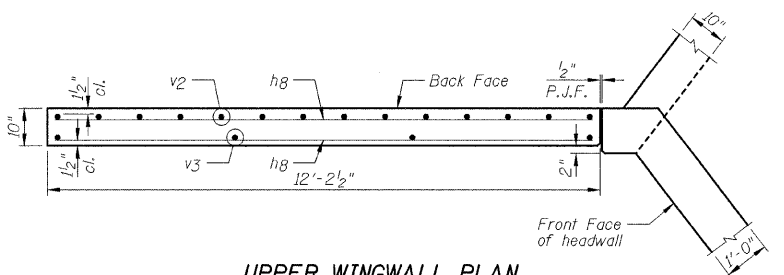
NORTHWEST & SOUTHEAST WINGWALL ELEVATION



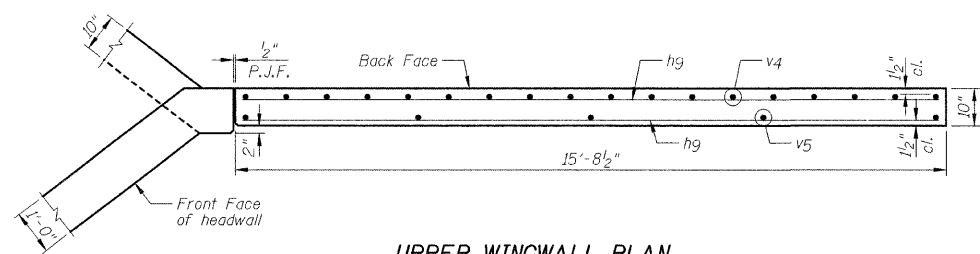
NORTHEAST & SOUTHWEST WINGWALL ELEVATION



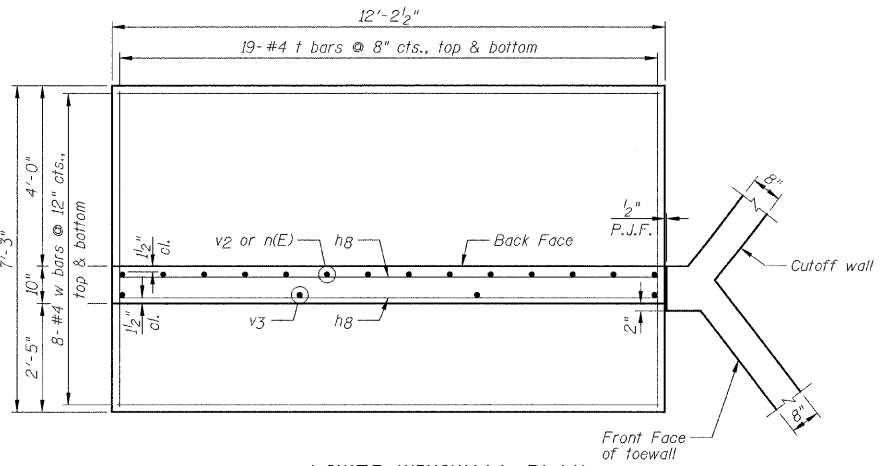
SECTION A-A



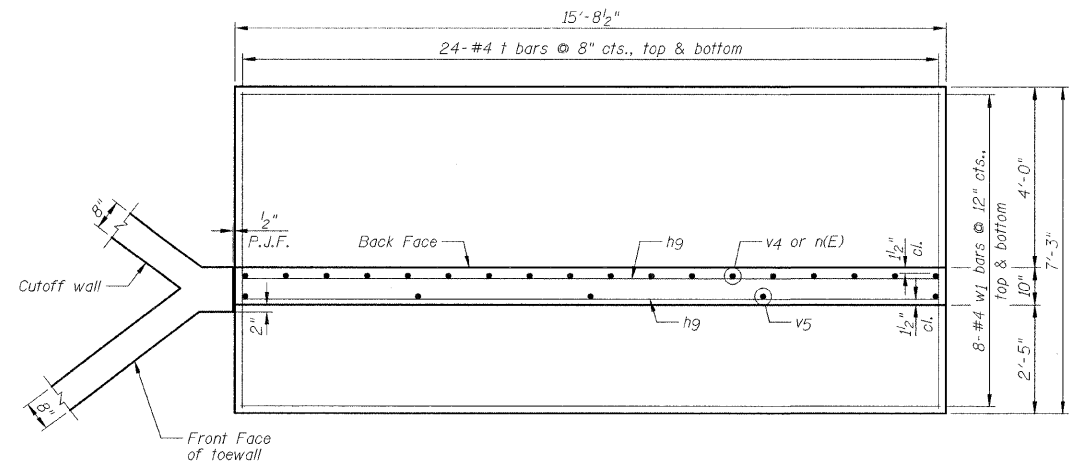
UPPER WINGWALL PLAN



UPPER WINGWALL PLAN



LOWER WINGWALL PLAN



LOWER WINGWALL PLAN

- NOTES:**
- 1.) Order v2, v3, v4 and v5 bars full length, cut according to Bar Cutting Diagram on Sheet B3. Use remainder of bars in opposite wingwall.
  - 2.) Calculated minimum bearing pressure = 2.84 ksf.
  - 3.) For Bill Of Material, see Sheet B3.
  - 4.) F.F. denotes Front Face. B.F. denotes Back Face.

REVISIONS		DATE
NAME		

ILLINOIS DEPARTMENT OF TRANSPORTATION  
CAST-IN-PLACE CONCRETE WINGWALLS  
F.A.P. 338 (US 45) OVER A DITCH  
SECTION 33 BR-1  
IROQUOIS COUNTY  
STATION 2372+90.00  
STRUCTURE NO. 038-2018  
DESIGNED BY: JML  
DRAWN BY: DJM  
DATE: 12/07/07  
CHECKED BY: MSW