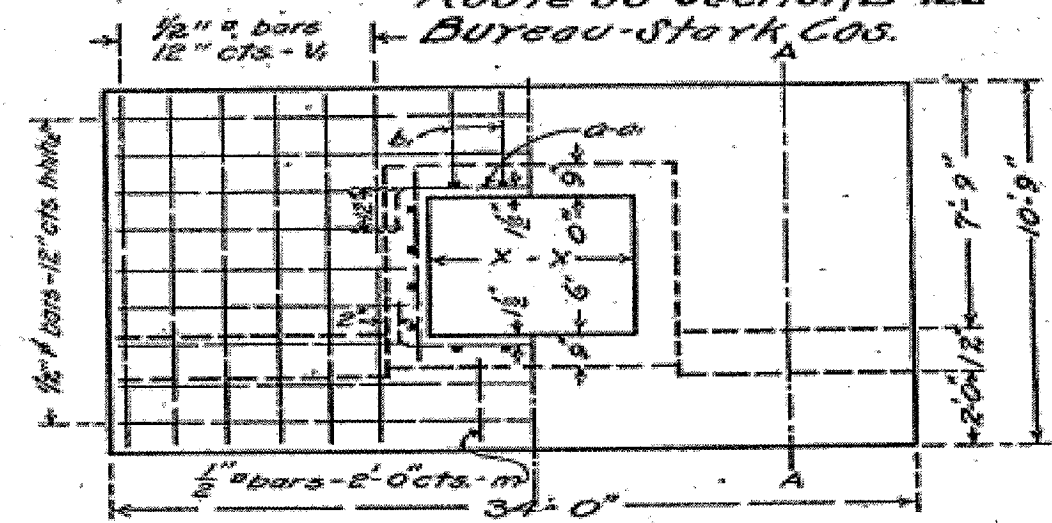
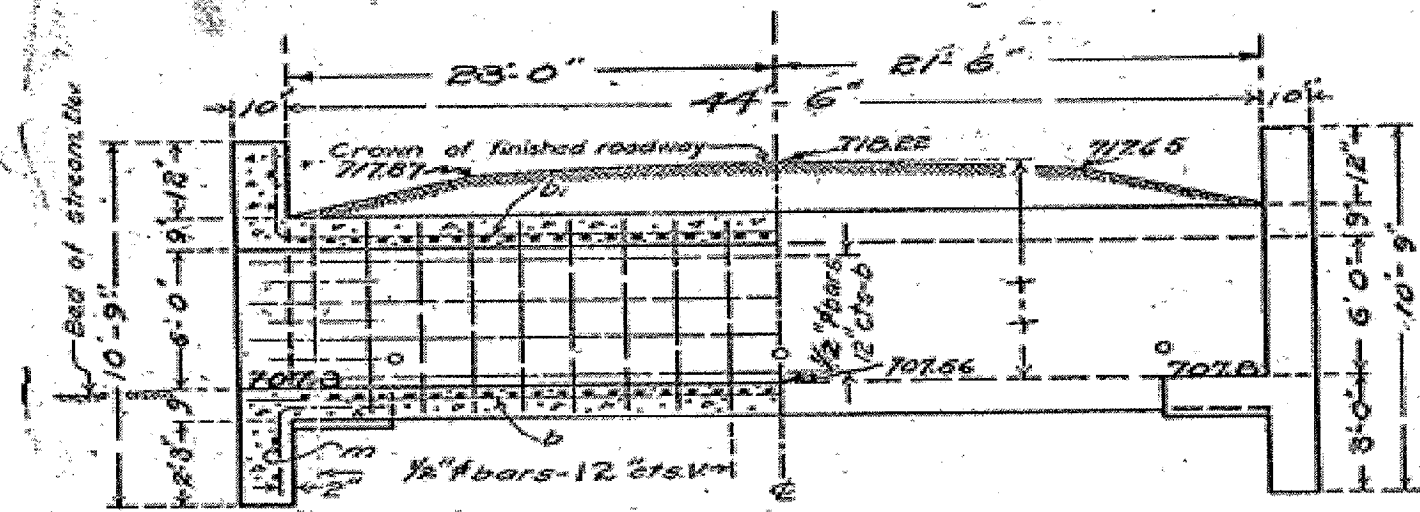


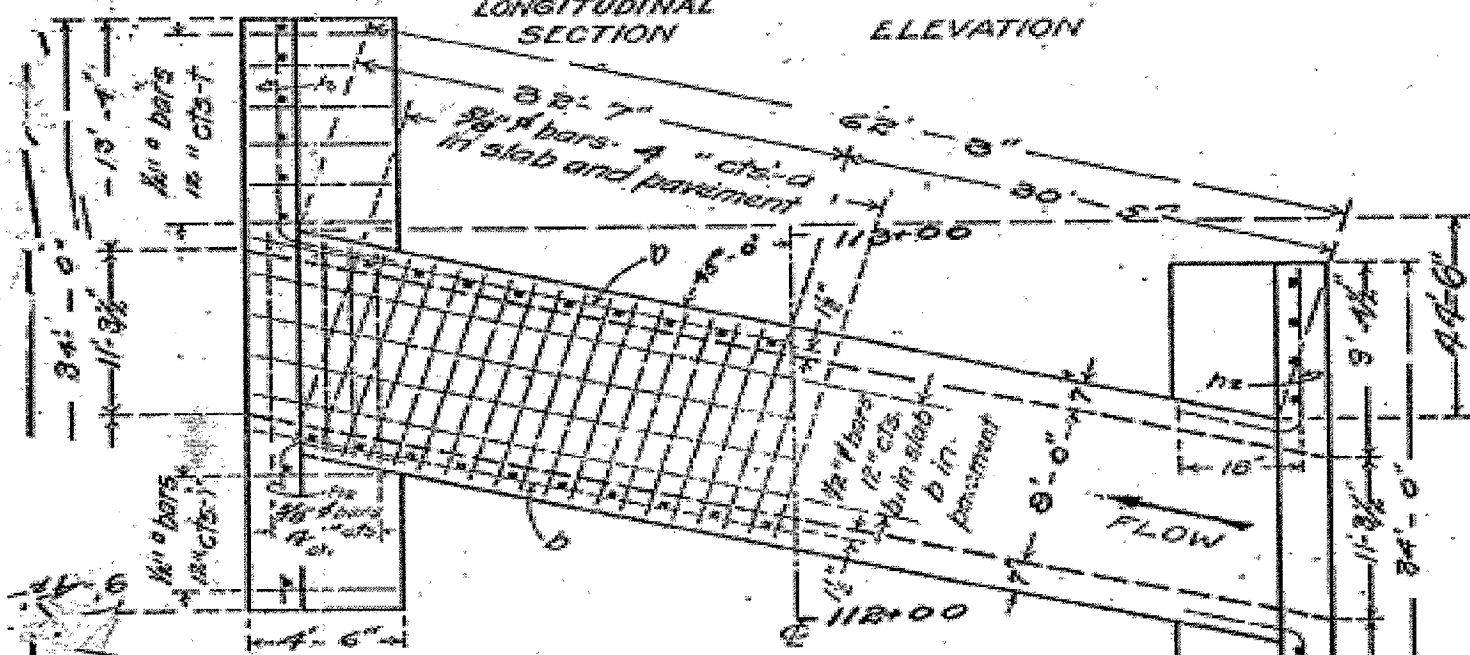
FED. ROAD DIST. NO.	STATE	FED. AID PROJ. NO.	FISCAL YEAR	SHEET NO.	TOTAL SHEETS
7	ILL	150	1928	68	83

SHEET NO. 68 OF 83

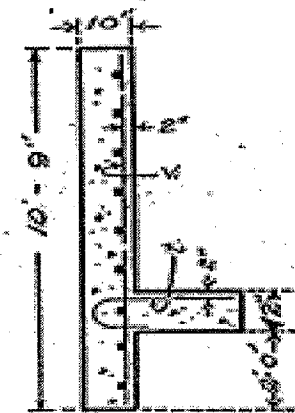
Route 88 Section B-122
Bureau-Stark Cos.



SHOWING REINFORCEMENT SHOWING OUTLINES



SHOWING REINFORCEMENT SHOWING OUTLINES



SECTION A-A

BUILD TOPS OF HEAD-WALLS
PARALLEL TO GRADE LINE.

BILL OF MATERIAL

Bars	No.	Size	Length
V	126	1/2"	7'-3"
VI	46	1/2"	10'-6"
		1/2"	
h	20	1/2"	18'-0"
h	10	1/2"	14'-6"
h	10	1/2"	9'-6"
a	326	3/8"	10'-9"
a	84	3/8"	14'-6"
		1/2"	
b	57	1/2"	28'-0"
b	27	1/2"	23'-6"
l	46	1/2"	4'-6"
m	5	1/2"	5'-0"
Steel-Lbs.			7840
Concrete-Cu. Yds.			71.7

Class A concrete to be used throughout. Proportions 1:2 1/2:4. Use 7m bars in downstream headwall only.

Sta. 112+70
State Bond Issue
Route 88 Section 122
Bureau County.

1118

83

DESIGNED - Ron Woodshank
DRAWN - Ron Woodshank
CHECKED -
DATE -

REVISOR -
REVISION -
DATE -

APPROVED -
DATE -

THIS SHEET FOR INFORMATION ONLY