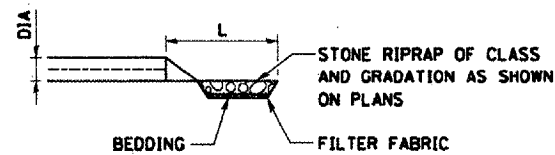
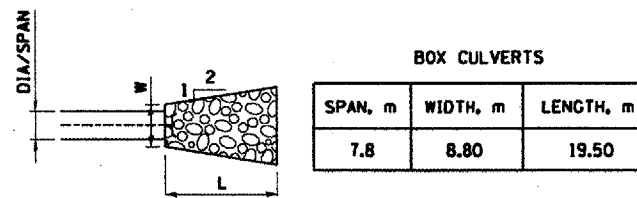
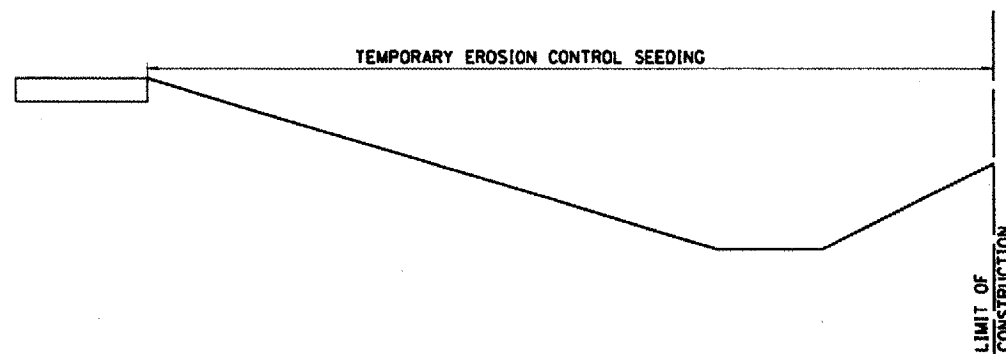


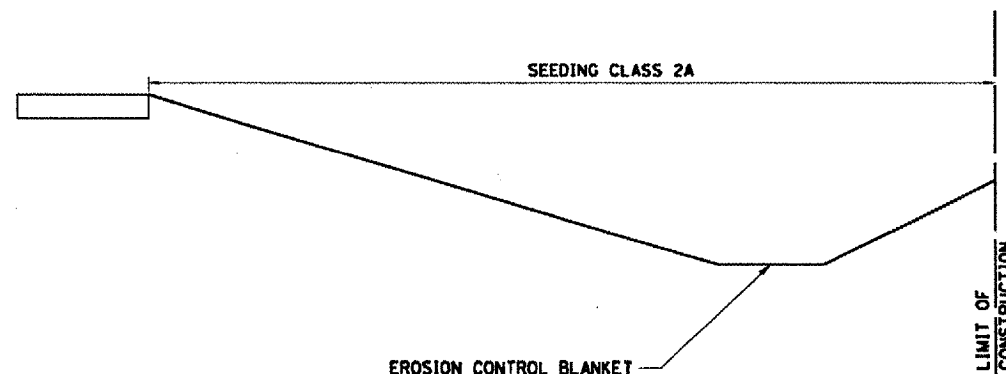
F.A.P. RTE.	SECTION	COUNTY	TOTAL SHEETS	SHEET NO.
317	(44B)BR	PEORIA	31	12
STA. 30+095.501 TO STA. 30+215.091				
FED. ROAD DIST. NO.		ILLINOIS FED. AID PROJECT		
CONTRACT NO. 68217				



**CULVERT INLET /OUTLET RIPRAP EROSION CONTROL DETAIL**



**TEMPORARY EROSION CONTROL TYPICAL SECTION**



M2800255 TEMPORARY EROSION CONTROL SEEDING		
STATION	STATION	AREA
<b>WHEELER ROAD</b>		
30+075	30+150	525
30+184	30+225	287
TOTAL		812 SQ M 0.081 HA

M2500210 SEEDING CLASS 2A		
STATION	STATION	AREA
<b>WHEELER ROAD</b>		
30+075	30+150	807
30+184	30+225	441.7
TOTAL		1248.750 M 0.125 HA

M2510630 EROSION CONTROL BLANKET		
STATION	STATION	AREA
<b>WHEELER ROAD</b>		
30+075	30+150	172.5
30+184	30+225	57.5
TOTAL		230.0 SQ M 0.023 HA

M2810107 RIPRAP, CLASS A3		
STATION	STATION	AREA
<b>WHEELER ROAD</b>		
30+150	30+164	105.0
30+173	30+184	82.5
TOTAL		187.5 SQ M

ALL DIMENSIONS ARE IN MILLIMETERS (INCHES) UNLESS OTHERWISE NOTED.



REVISIONS	
NAME	DATE
D. Layne	11/17/07

ILLINOIS DEPARTMENT OF TRANSPORTATION  
**WHEELER ROAD DRAINAGE DETAILS SHEET 1 OF 1**  
 SCALE: NONE  
 DATE: \*\*\*\*DATE\*\*\*  
 DRAWN BY: E.D.  
 CHECKED BY: G.T.