

STATE OF ILLINOIS  
DEPARTMENT OF TRANSPORTATION

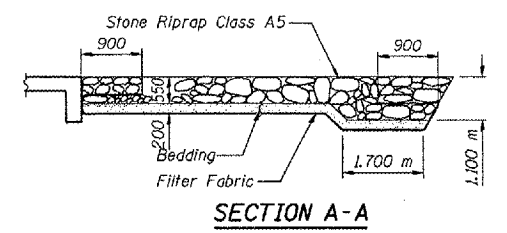
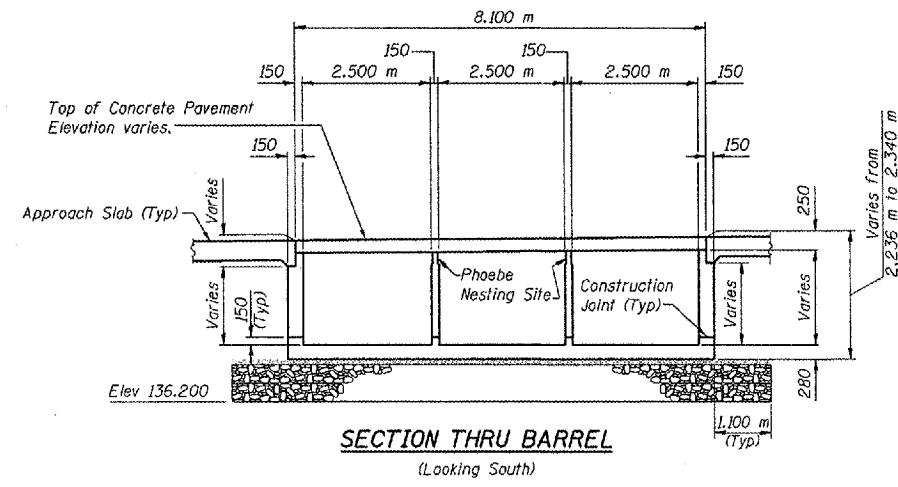
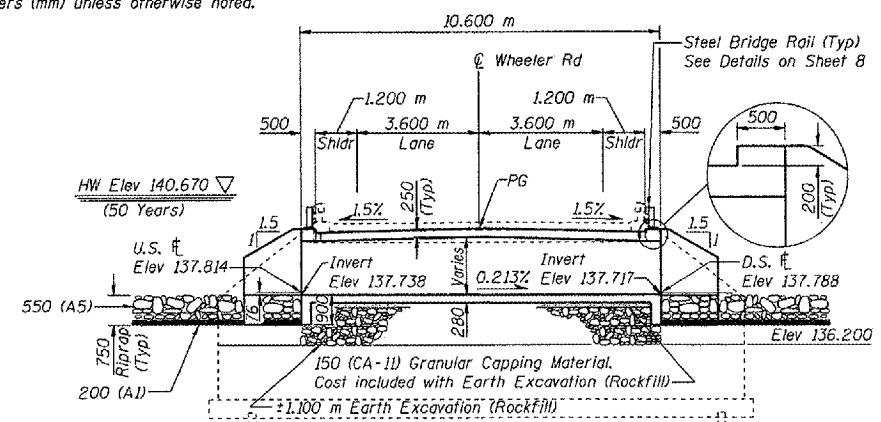
ROUTE NO.	SECTION	CRAFT	DATE	SHEET	SHEET NO. 1
F.A.P. 317	44(B)BR	PEORIA	31	13	9 SHEETS
CONTRACT NO. 68217					

Benchmark: CE5A - Railroad Spike, 0.15 m above ground, in north face of power pole, south of U.S. Route 24 and east of east levee for Dry Run Creek, just east of Glasford Road. 63.1 m south of U.S. Route 24 centerline at Station 20+518. Elev. = 136.954.

Existing Structure: S.N. 072-0103 Built as SBI Route 9, Section 44-B at Station 654+82 (English) in 1924.  
Superstructure - One Span Cast-in-Place Concrete Deck Slab.  
Substructure - Cast-in-Place Concrete Closed Abutments on Timber Piles.  
Length = 6.706 m (Back to Back Abutments), Width = 9.804 m (Out to Out Deck).  
Traffic is to be rerouted during construction.

No Salvage

Note: All Dimensions are in millimeters (mm) unless otherwise noted.



DESIGN SPECIFICATIONS  
AASHTO 2002 Standard Specifications for Highway Bridges.

LOADING MS18  
Allow 2.4 kN/m<sup>2</sup> for future wearing surface.

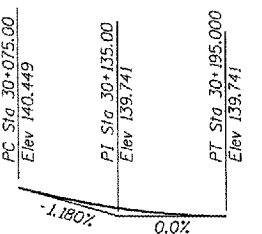
DESIGN STRESSES  
FIELD UNITS  
f<sub>c</sub> = 24 MPa  
f<sub>y</sub> = 420 MPa (reinforcement)

STATION 30+168.363  
BUILT 200 BY  
STATE OF ILLINOIS  
F.A.P. RT. 317 SEC. (44R)BR  
LOADING MS18  
STR. NO. 072-2034

NAME PLATE  
See Std. 515001

CURVE DATA  
(Along  $\hat{C}$  Roadway)

$\Delta$  = 5° 27' 56" (LT)  
R = 305.000 m  
T = 14.559 m  
L = 29.095 m  
E = 0.347 m  
PC Sta. 30+126.666  
PI Sta. 30+141.225  
PT Sta. 30+155.761



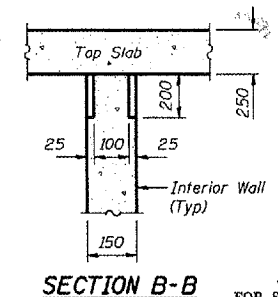
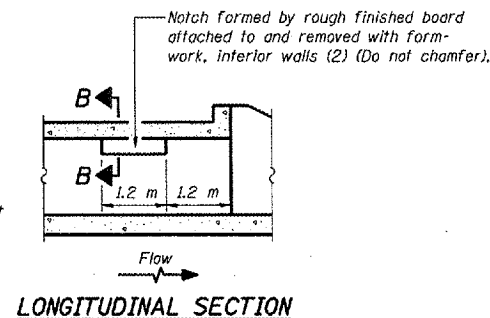
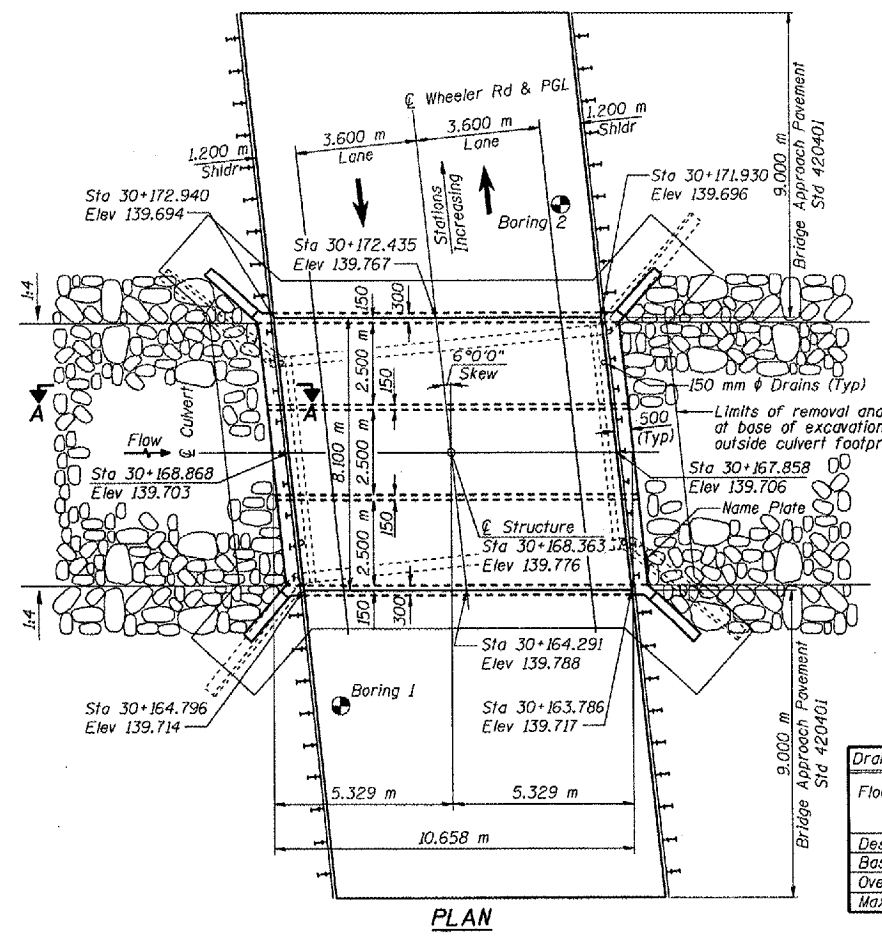
VC = 120.000 m  
APPROVED FOR STRUCTURAL ADEQUACY ONLY



EXPIRATION DATE: 11-30-06  
DATE: 9-15-2006

Stanley Consultants INC.  
850 West Higgins Road, Suite 730, Chicago, Illinois 60637-2803  
www.stanleygroup.com

- LEGEND
- Soil Boring Location
  - U.S. Upstream
  - D.S. Downstream

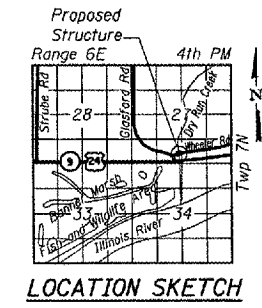


PHOEBE NESTING  
SITE DETAILS  
(Downstream End Only)

WATERWAY INFORMATION

Drainage Area = 6.5 km<sup>2</sup> Low Grade Elev. 139.88 @ Sta. 30+305.000

Flood	Freq. Yr.	Q m <sup>3</sup> /s	Opening m <sup>2</sup>		Nat. H.W.E.		Head - m		Headwater Elev.	
			Exist.	Prop.	Exist.	Prop.	Exist.	Prop.	Exist.	Prop.
Design	50	50	9.10	13.125	140.85	140.67	0.21	-0.01	141.06	140.66
Base	100	59	9.10	13.125	140.94	140.85	0.40	-0.01	141.34	140.84
Overlapping	3	17	9.10	13.125	139.35	139.79	0.55	0.09	139.90	139.87
Max. Calc.	500	81	9.10	13.125						



GENERAL PLAN  
WHEELER ROAD OVER  
DRY RUN CREEK  
FAP RTE 317 SECTION (44B)BR  
PEORIA COUNTY  
STA 30+168.363  
STRUCTURE NUMBER 072-2034

D:\SERIALS\CA\DD\01-BRT\SCU00301.dgn 14-SEP-2006

DESIGNED	BG
CHECKED	DSE
DRAWN	RTT
CHECKED	BG
DATE	AUGUST 31, 2004