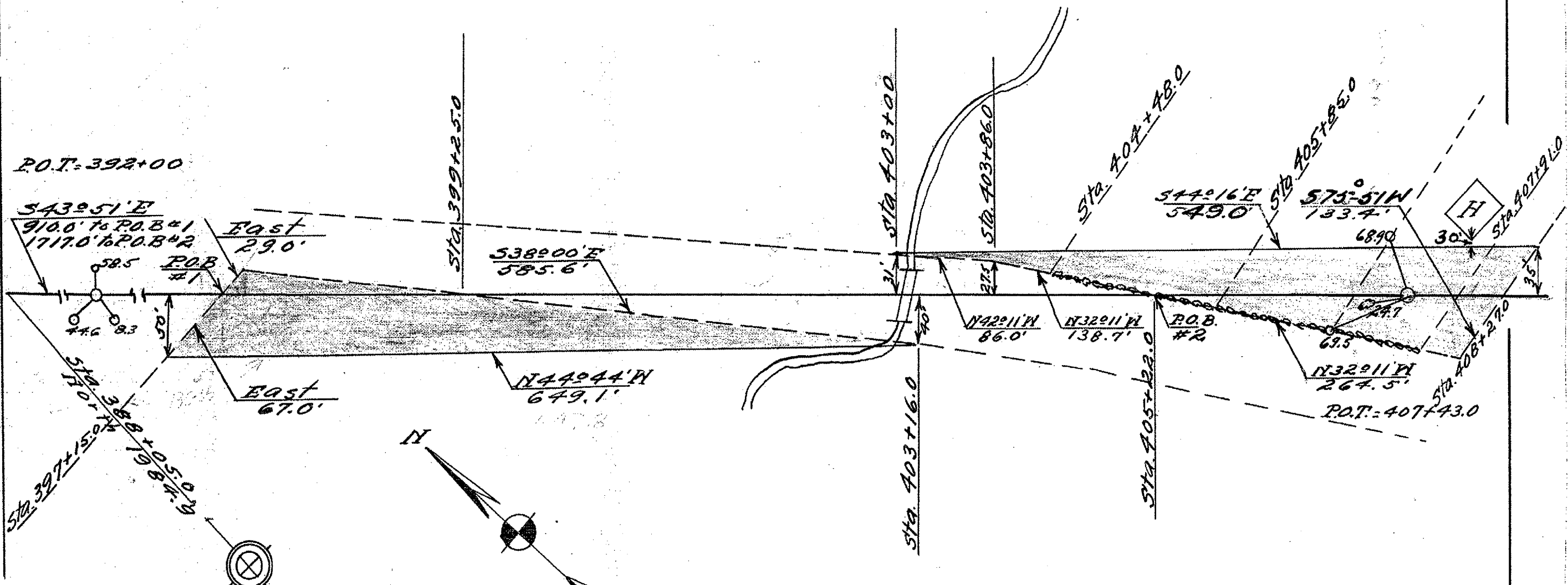


F.A.P. RTE.	SECTION.	COUNTY	TOTAL SHEETS	SHEET NO.
626	(42B)	KNOX	11	7
STA. 396+95.50		TO STA. 397+28.50		
FED. ROAD DIST. NO. 4		ILLINOIS		FED. AID PROJECT

E. H. McElwain  
 Pt. S N 1/4 Sec 1  
 Area = 1.06± Acres



Note: Stone at  
 N N Cor Sec 12

RIGHT OF WAY PROJECT  
 Illinois State Bond Issue Route 8  
 Pt. S N 1/4 Sec 1 TION R2E 4PM  
 Knox County  
 scale 1" = 100' Dec. 19th 1924

Route 8 section 42

12R

PLOT DATE: 12/15/24  
 FILE NAME: 12R  
 SCALE: 1" = 100'  
 REFERENCE: 12R