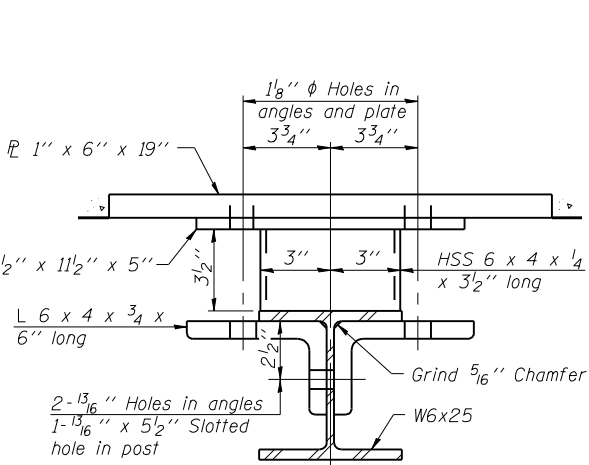
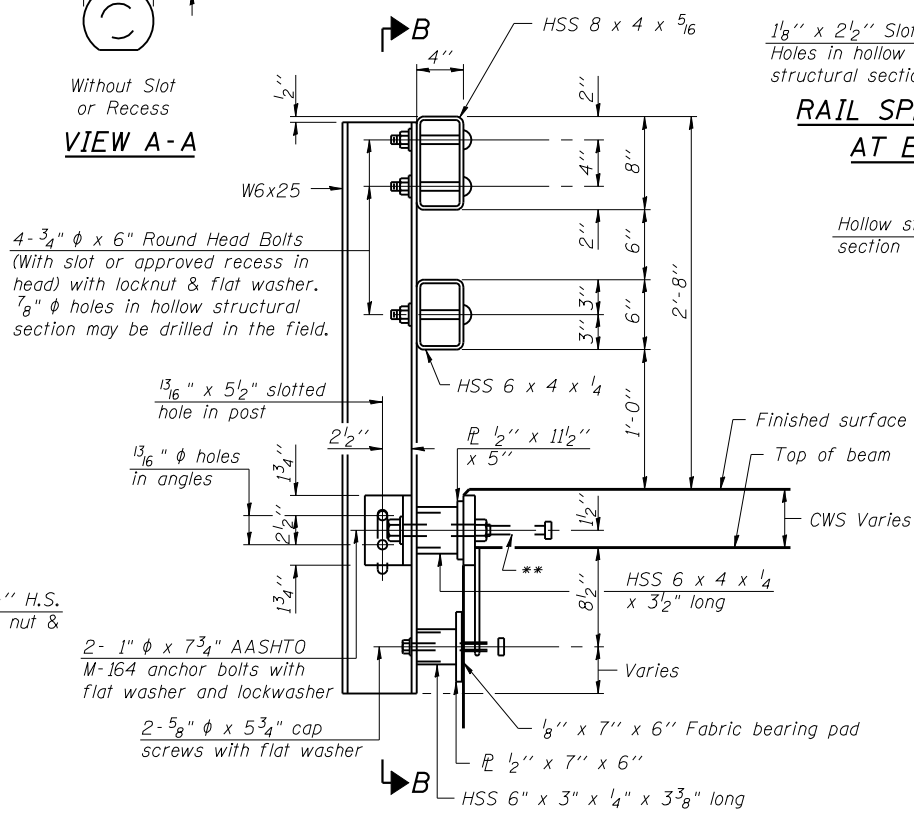


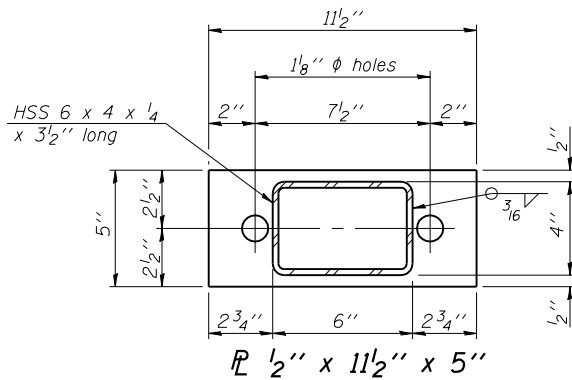
**SECTION B-B**



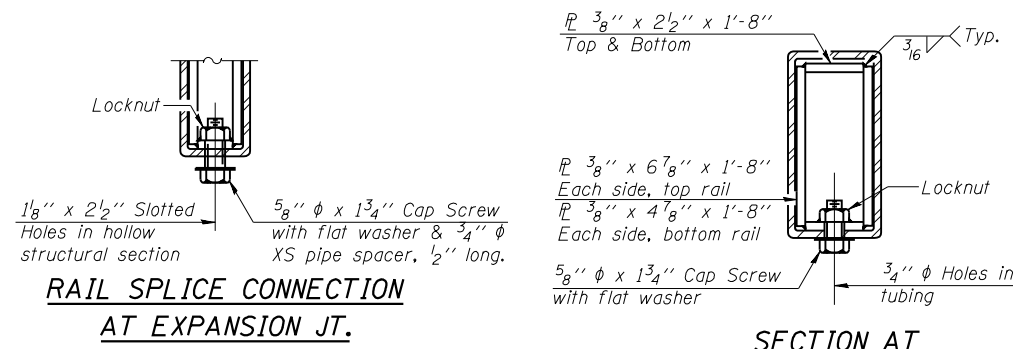
**SECTION C-C**



**SECTION AT RAIL POST**

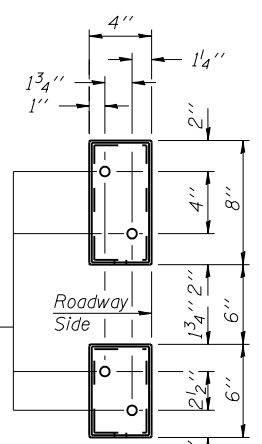


**PLAN-BOTT. SPLICE P TYPICAL**

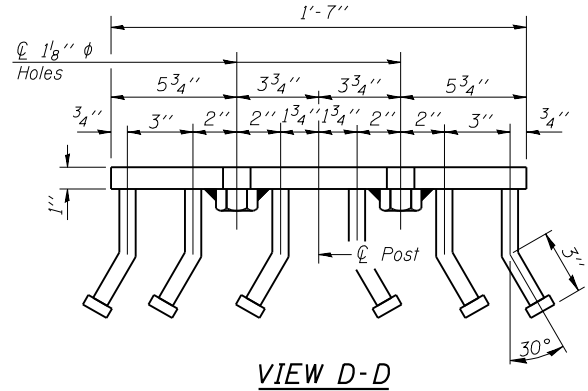


**RAIL SPLICE CONNECTION AT EXPANSION JT.**

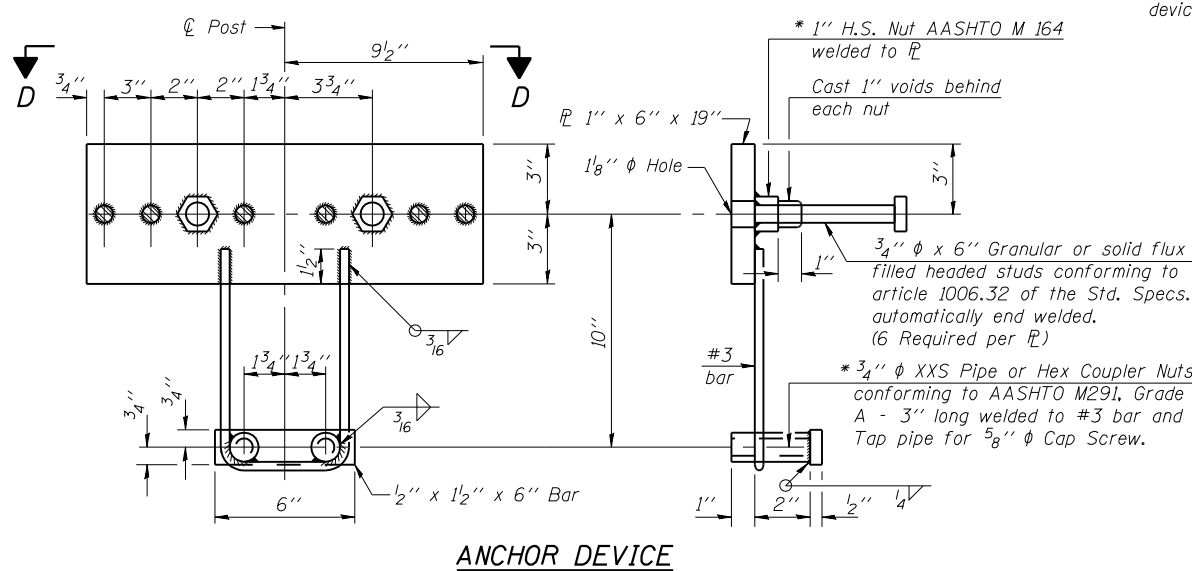
**SECTION AT RAIL SPLICE**



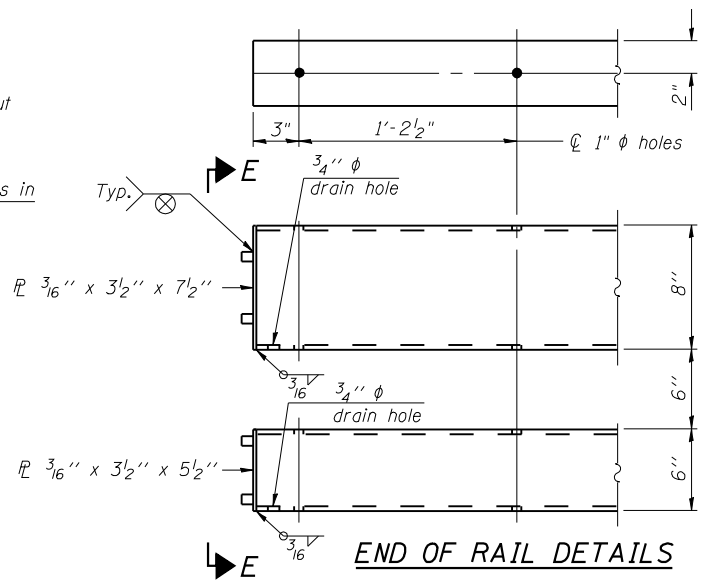
**VIEW E-E**



**VIEW D-D**



**ANCHOR DEVICE**



**END OF RAIL DETAILS**

**Notes:**  
 All field drilled holes shall be coated with an approved zinc rich paint before erection.  
 For multi-span bridges, sufficient 1/4" x 6" x 1'-2" galvanized steel shims shall be provided to align rail between adjacent spans. Cost included with Steel Bridge Rail, Type SM.  
 Steel rail elements shall be galvanized according to Article 509.05 of the Standard Specifications.  
 \*\* The studs of the anchor devices shall be placed below the top reinforcement bars and the outermost longitudinal reinforcement bar shall be placed directly above the studs of the rail post anchor device.

**BILL OF MATERIAL**

Item	Unit	Quantity
Steel Railing, Type SM	Foot	294

ILLINOIS DEPARTMENT OF TRANSPORTATION	
SHEET TITLE: STEEL RAILING, TYPE SM WITH CONCRETE WEARING SURFACE	
PROJECT: IL 133 OVER HICKORY GROVE CREEK FAP 749 SECTION 9BR EDGAR COUNTY STATION 159+99.25 STRUCTURE NUMBER 023-0015	PROJECT NO. 03061-11 SCALE 8/31/07 DATE DRAWN BY TFG CHECKED BY BD/MCB DRAWING NO.
COOMBE-BLOXDORF P.C. Engineers / Land Surveyors Springfield, Illinois Design Firm License No. 184-002703	
6 OF 9 SHTS	

PLOT DATE = 08/31/2007  
 FILE NAME = 023-0015-0015-0015-R-34CWS.dgn  
 PLOT SCALE = 0.250000 1" = 1'-0"  
 USER NAME = CFC