

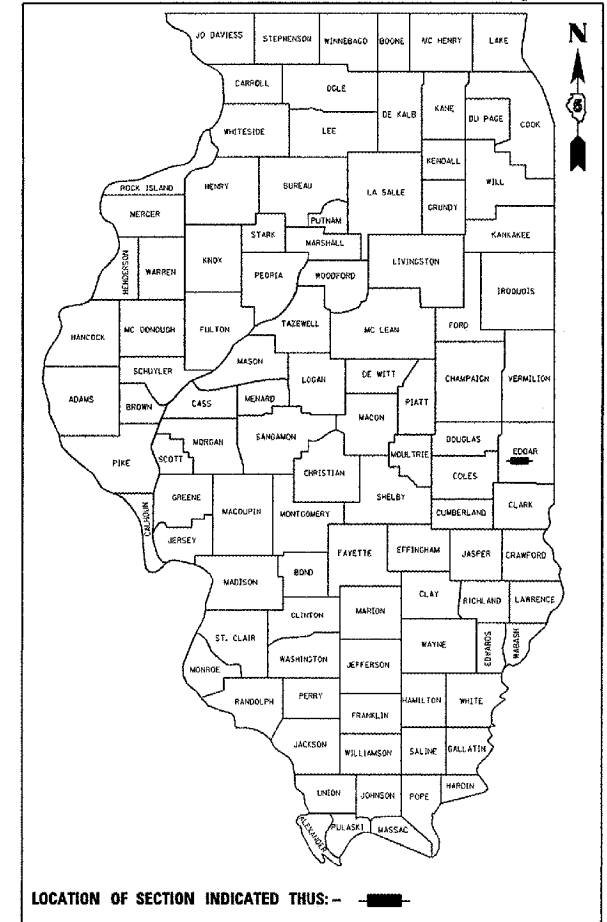
F.A.P. RTE.	SECTION	COUNTY	TOTAL SHEETS	SHEET NO.
749	(9BR)BR	EDGAR	31	1

STATE OF ILLINOIS
DEPARTMENT OF TRANSPORTATION
DIVISION OF HIGHWAYS

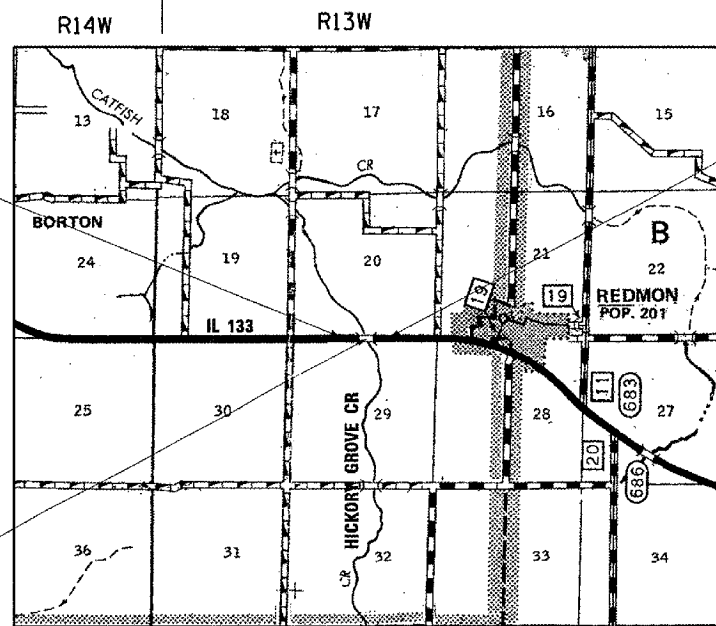
**PROPOSED
HIGHWAY PLANS**

FAP ROUTE 749 (IL ROUTE 133)
SECTION (9BR)BR
PROJECT BHF-0749(021)
EDGAR COUNTY
C-95-033-04
BRIDGE SUPERSTRUCTURE REPLACEMENT
HICKORY GROVE CREEK 1 MILE WEST OF REDMON

FOR INDEX OF SHEETS, SEE SHEET NO. 2
FOR SUMMARY OF QUANTITIES, SEE SHEET NO. 3



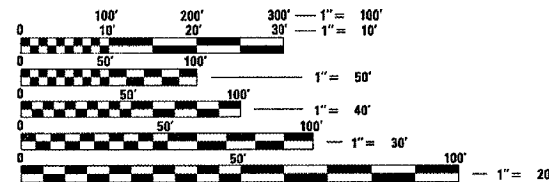
LOCATION OF SECTION INDICATED THUS: — ■ —



SECTION (9BR)BR
PROJECT BEGINS
Sta 159+00.00

SECTION (9BR)BR
PROJECT ENDS
Sta 162+25.00

S.N. 023-0015
Sta 159+99.25
147'-0" BK. TO BK. ABUT.
32'-0" OUT TO OUT
25° RT SKEW



FULL SIZE PLANS HAVE BEEN PREPARED USING STANDARD
ENGINEERING SCALES. REDUCED SIZED PLANS WILL NOT
CONFORM TO STANDARD SCALES. IN MAKING MEASUREMENTS
ON REDUCED PLANS, THE ABOVE SCALES MAY BE USED.

J.U.L.I.E.
JOINT UTILITY LOCATION INFORMATION FOR EXCAVATION
1-800-892-0123

CONTRACT NO. 70389

LOCATION MAP



GROSS LENGTH OF PROJECT = 425 FEET = 0.080 MILES

ADT = 1600 (2006)

STATE OF ILLINOIS
DEPARTMENT OF TRANSPORTATION
DIVISION OF HIGHWAYS

SUBMITTED *DEC 20 2007*

[Signature]
DEPUTY DIRECTOR OF HIGHWAYS, REGION ENGINEER

February 1, 2008
Eric E. Harn
INTERIM ENGINEER OF DESIGN AND ENVIRONMENT

February 1, 2008
Christine M. Reed
DIRECTOR OF HIGHWAYS, CHIEF ENGINEER

PRINTED BY THE AUTHORITY
OF THE STATE OF ILLINOIS

BLANK, WESSELINK, COOK & ASSOCIATES
ENGINEERS - CONSULTANTS
DECATUR, ILLINOIS



Charles W. Guthrie, Jr.
CHARLES W. GUTHRIE, JR., P.E.
DATE *August 29 2007*
EXPIRES NOVEMBER 30, 2007

PROJECT ENGINEER: KENSIL GARNETT (217)465-4181
CONSULTANT LIAISON: NANCY FASIG

F.A.P. RTE.	SECTION	COUNTY	TOTAL SHEETS	SHEET NO.
749	(9BR)BR	EDGAR	31	2
STA.		TO STA.		
FED. ROAD DIST. NO.		ILLINOIS FED. AID PROJECT		

INDEX OF SHEETS

1	COVER SHEET
2	INDEX OF SHEETS, HIGHWAY STANDARDS, AND GENERAL NOTES
3	SUMMARY OF QUANTITIES
4-5	EXISTING AND PROPOSED TYPICALS
6	SCHEDULE OF QUANTITIES
7	PLAN AND PROFILE SHEETS
8-16	BRIDGE PLANS
17	ROADWAY DETAILS
17A	DETOUR SIGNING DETAIL
18	TREATMENT OF EXITING FIELD TILE SYSTEMS DETAIL
19	TRAFFIC CONTROL & PROTECTION DEVICES (ROAD & SIDEROAD/STREET CLOSURES)
20-23	TYPICAL APPLICATION OF PAVEMENT MARKINGS AND MARKERS
24-31	CROSS SECTIONS

HIGHWAY STANDARDS

000001-05	STANDARD SYMBOLS, ABBREVIATIONS AND PATTERNS
001001-01	AREAS OF REINFORCEMENT BARS
001006	DECIMAL OF AN INCH AND OF A FOOT
280001-04	TEMPORARY EROSION CONTROL SYSTEMS
482011-03	HMA SHOULDER STRIPS/SHOULDERS WITH RESURFACING OR WIDENING AND RESURFACING PROJECTS
515001-02	NAME PLATE FOR BRIDGES
630001-07	STEEL PLATE BEAM GUARDRAIL
630301-04	SHOULDER WIDENING FOR TYPE 1 (SPECIAL) GUARDRAIL TERMINALS
631032-03	TRAFFIC BARRIER TERMINAL, TYPE 6A
635006-02	REFLECTOR AND TERMINAL MARKER PLACEMENT
635011-01	REFLECTOR MARKER AND MOUNTING DETAILS
666001	RIGHT OF WAY MARKERS
701011-01	OFF-ROAD MOVING OPERATIONS, 2L, 2W, DAY ONLY
701301-02	LANE CLOSURE, 2L, 2W, SHORT TIME OPERATIONS
701311-02	LANE CLOSURE, 2L, 2W, MOVING OPERATIONS - DAY ONLY
701901	TRAFFIC CONTROL DEVICES
780001-01	TYPICAL PAVEMENT MARKINGS
781001-02	TYPICAL APPLICATIONS RAISED REFLECTIVE PAVEMENT MARKERS

GENERAL NOTES

G.N. 100
ENGLISH UNITS OF MEASUREMENT SHALL GOVERN OVER AND SUPERSEDE ANY METRIC UNITS SHOWN IN THIS CONTRACT. WHERE INCLUDED, METRIC UNITS ARE FOR INFORMATION ONLY.

G.N. 105.09A
ALL ELEVATIONS SHOWN IN THE PLANS ARE BASED ON NORTH AMERICAN DATUM OF 1988 (NAVD 88).

G.N. 107.31
UTILITY LINES WERE PLOTTED FROM INFORMATION FURNISHED BY THE VARIOUS UTILITY COMPANIES INVOLVED (QUALITY LEVEL C &/OR QUALITY LEVEL D) AND THE ACCURACY SHOULD BE CONSIDERED APPROXIMATE ONLY.

UTILITY COMPANIES MAY BE ADJUSTING THEIR FACILITIES DURING CONSTRUCTION. THE CONTRACTOR SHALL COOPERATE WITH THESE ORGANIZATIONS WHILE THESE ADJUSTMENTS ARE BEING PREFORMED. J.U.L.I.E. - JOINT UTILITY LOCATION INFORMATION FOR EXCAVATORS SYSTEM (800) 892-0123.

G.N. 201
TREES THAT INTERFERE WITH THE CONSTRUCTION OPERATIONS SHALL BE REMOVED AS DIRECTED BY THE ENGINEER. ANY TREE DUE TO ITS LOCATION AND DEEMED SUITABLE FOR SAVING BY THE ENGINEER SHALL BE PROTECTED DURING CLEARING AND SUBSEQUENT CONSTRUCTION OPERATIONS.

GN. 406H
THE FOLLOWING MIXTURE REQUIREMENTS ARE APPLICABLE FOR THIS PROJECT:

LOCATION(S):	MAINLINE PAVEMENT
MIXTURE USE(S):	SURFACE COURSE
AC/PG:	PG 64-22
RAP % (MAX)	15%
DESIGN AIR VOIDS:	4.0% @ NDES = 50
MIX COMP: (GRADATION)	IL 9.5
FRICTION AGGREGATE:	MIX "C"

G.N. 781
RAISED REFLECTIVE PAVEMENT MARKERS SHALL BE PLACED IN ACCORDANCE WITH STANDARD 781001, AND THE DETAILS SHOWN IN THE PLANS. IF THERE IS ANY DISCREPANCY BETWEEN THE STANDARD AND THE DETAILS IN THE PLANS, THE DETAILS IN THE PLANS SHALL GOVERN. THE FINAL PAVEMENT MARKINGS SHALL BE IN PLACE PRIOR TO PLACING THE RAISED REFLECTIVE PAVEMENT MARKERS AND THE RAISED REFLECTIVE PAVEMENT MARKERS SHALL BE PLACED MIDWAY IN THE 30 FOOT SPACE BETWEEN THE DASHED CENTERLINE STRIPES (WHEN APPLICABLE).

G.N. 1004.01
COARSE AGGREGATE GRADATION CA-10 MAY BE USED WHENEVER COARSE AGGREGATE CA-6 IS SPECIFIED IN THE STANDARD SPECIFICATIONS.

THERE ARE NO COMMITMENTS FOR THIS PROJECT.

REVISIONS		ILLINOIS DEPARTMENT OF TRANSPORTATION
NAME	DATE	
		INDEX OF SHEETS, HIGHWAY STANDARDS AND GENERAL NOTES
DATE 1/06		DRAWN BY LCH CHECKED BY PBB

PLOT DATE : 12/14/2007
 FILE NAME : c:\pwworkspace\69022081\c8b1\mid\plans\B1\05_2007\drawings\indexofsheet.dgn
 USER : jcollins
 USER NAME : jcollins

F.A.P. RTE.	SECTION	COUNTY	TOTAL SHEETS	SHEET NO.
749	19BRBR	EDGAR	31	3
STA.		TO STA.		
FED. ROAD DIST. NO.		ILLINOIS FED. AID PROJECT		

PAY CODE NUMBER	ITEM DESCRIPTION	UNIT	TOTAL QUANTITY HBBRP TWO-LANE RURAL ROADWAY 80% FEDERAL 20% STATE X080-2A
2010010	TREE REMOVAL (6 TO 15 UNITS DIAMETER)	UNIT	14
20200100	EARTH EXCAVATION	CU YD	415
20400800	FURNISHED EXCAVATION	CU YD	634
21301052	EXPLORATION TRENCH 52" DEPTH	FOOT	750
25000200	SEEDING, CLASS 2	ACRE	1
25000400	NITROGEN FERTILIZER NUTRIENT	POUND	90
25000500	PHOSPHORUS FERTILIZER NUTRIENT	POUND	90
25000600	POTASSIUM FERTILIZER NUTRIENT	POUND	90
2510015	MULCH, METHOD 2	ACRE	1
28000250	TEMPORARY EROSION CONTROL SEEDING	POUND	100
28000300	TEMPORARY DITCH CHECKS	EACH	6
28000400	PERIMETER EROSION BARRIER	FOOT	305
40600100	BITUMINOUS MATERIALS (PRIME COAT)	GALLON	60
40600982	HOT-MIX ASPHALT SURFACE REMOVAL - BUTT JOINT	SQ YD	231
40603310	HOT-MIX ASPHALT SURFACE COURSE, MIX 'C', N50	TON	93
48101200	AGGREGATE SHOULDERS, TYPE B	TON	60
50101500	REMOVAL OF EXISTING SUPERSTRUCTURES	EACH	1
50102400	CONCRETE REMOVAL	CU YD	0.7
50300225	CONCRETE STRUCTURES	CU YD	0.8
50300260	BRIDGE DECK GROOVING	SQ YD	520
50300300	PROTECTIVE COAT	SQ YD	520
50400405	PRECAST PRESTRESSED CONCRETE DECK BEAMS (21" DEPTH)	SQ FT	2840
50400505	PRECAST PRESTRESSED CONCRETE DECK BEAMS (27" DEPTH)	SQ FT	1817
50800205	REINFORCEMENT BARS, EPOXY COATED	POUND	6600
50901050	STEEL RAILING, TYPE SM	FOOT	294
51500100	NAME PLATES	EACH	1
63000000	STEEL PLATE BEAM GUARD RAIL, TYPE A	FOOT	375
63100087	TRAFFIC BARRIER TERMINAL, TYPE 6A	EACH	4
63100167	TRAFFIC BARRIER TERMINAL, TYPE 1 (SPECIAL) TANGENT	EACH	4
63200310	GUARDRAIL REMOVAL	FOOT	505
66600105	FURNISHING AND ERECTING RIGHT-OF-WAY MARKERS	EACH	8
67000400	ENGINEER'S FIELD OFFICE, TYPE A	CAL MO	2
67100100	MOBILIZATION	L SUM	1
X7011005	TRAFFIC CONTROL AND PROTECTION FOR TEMPORARY DETOUR	L SUM	1
70300220	TEMPORARY PAVEMENT MARKING - LINE 4"	FOOT	956

PAY CODE NUMBER	ITEM DESCRIPTION	UNIT	TOTAL QUANTITY HBBRP TWO-LANE RURAL ROADWAY 80% FEDERAL 20% STATE X080-2A
70301000	WORK ZONE PAVEMENT MARKING REMOVAL	SQ FT	319
7800110	PAINT PAVEMENT MARKING - LINE 4"	FOOT	956
78100100	RAISED REFLECTIVE PAVEMENT MARKER	EACH	4
78100105	RAISED REFLECTIVE PAVEMENT MARKER (BRIDGE)	EACH	2
78200400	GUARDRAIL REFLECTORS	EACH	12
78201000	TERMINAL MARKER - DIRECT APPLIED	EACH	4
78300200	RAISED REFLECTIVE PAVEMENT MARKER REMOVAL	EACH	6
Z0001900	ASBESTOS BEARING PAD REMOVAL	EACH	48
X0325305	STRUCTURAL REPAIR OF CONCRETE (DEPTH EQUAL TO OR LESS THAN 5 INCHES)	SQ FT	12
X5030305	CONCRETE WEARING SURFACE, 5"	SQ YD	520

PLOT DATE = 12/14/2007
 FILE NAME = c:\pcc\pcc15\032084\0811.rvt
 PLOT SCALE = 42.353' / IN.
 USER NAME = collinsb

* DENOTES SPECIALTY ITEM

REVISIONS	
NAME	DATE

ILLINOIS DEPARTMENT OF TRANSPORTATION

SUMMARY OF QUANTITIES

SHEET 1 OF 1

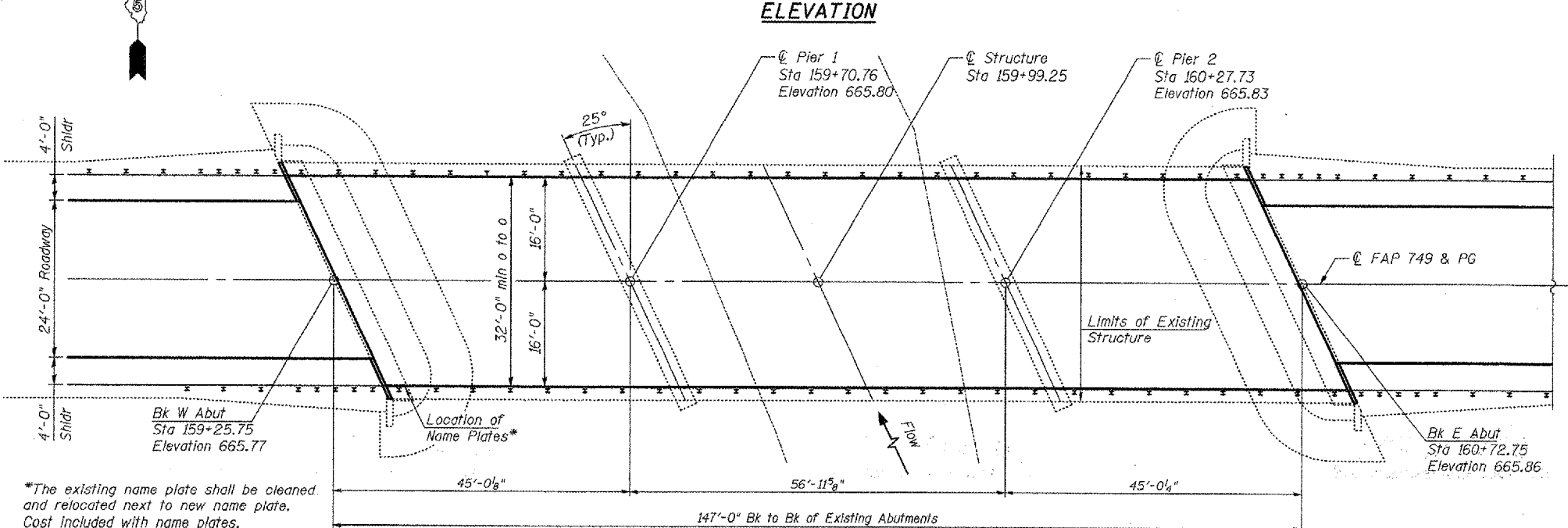
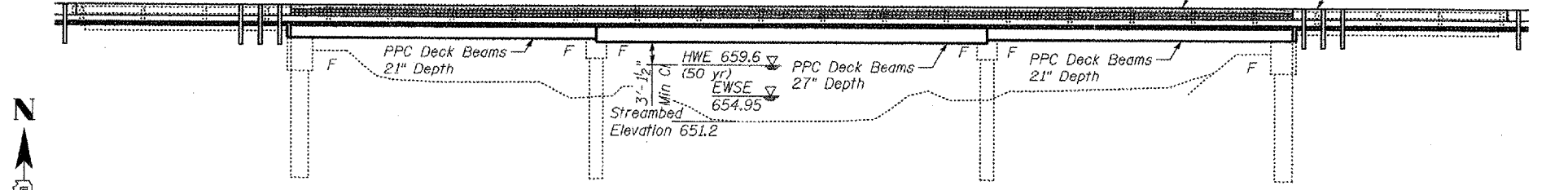
SCALE: VERT. DRAWN BY
 HORIZ. CHECKED BY
 DATE

Bench Mark: Chiseled square located on the southwest wingwall of SN 023-0015, Sta 159+34.68, 19.1' RT, Elevation 665.20

Existing Structure: 023-0015 Sta 159+99.25 Built in 1936 as S.A. 7 & S.A. 19, Sectin 9B. In 1971 as F.A. Route 175, Section 9BR the original reinf. conc. deck girder superstructure was replaced with precast prestressed concrete deck beams and the pile bent piers and abutments were widened to accommodate the wider superstructure. The Structure is a three span PPC Deck Beam bridge 147'-0" long (Span 1 45.01', Span 2 56.97' & Span 3 45.02' long). The existing horizontal clearance is 36'-0" face to face of type "N" steel bridge railing. Skew 25°. The existing beams will be removed and replaced with new PPC Deck Beams and reinforced concrete wearing surface 32'-0" face to face of type SM Bridge Railing. Repairs will be made to the Substructure concrete & Concrete Piling. Traffic will be detoured. No Salvage

ROUTE NO.	SECTION	COUNTY	SHEET	SHEET NO.
FAP 749	9BR	EDGAR	31	8
FED. ROAD DIST. NO.				ILLINOIS
FED. AID PROJECT-				

Contract #70389



*The existing name plate shall be cleaned and relocated next to new name plate. Cost included with name plates.

GENERAL NOTES

Reinforcement bars shall conform to the requirements of ASTM A 706 Gr 60 (IL Modified). See Special Provisions.

Reinforcement bars designated (E) shall be epoxy coated.

Plan dimensions and details relative to existing plans are subject to routine variations. The contractor shall verify existing dimensions and details affecting new construction and make necessary approved adjustments prior to construction or ordering of materials. Such variations shall not be cause for additional compensation for a change in scope of work, however, the contractor will be paid for the quantity actually furnished based upon the unit price bid for the work.

The cut strands at each beam end shall be given two coats of zinc dust spray or paint meeting the requirements of ASTM A780. The zinc dust spray or paint shall be applied before corrosion appears and allowed to dry according to the manufacturer's specifications prior to another coat of zinc. A concrete sealer meeting the requirements of Section 587 of the Standard Specifications shall be applied to the exterior face and 9" in on the underside of the fascia beams. The sealer shall be applied after visible crack growth has subsided. This work shall be performed by the producer and included with the cost of the beam.

The Contractor is advised that the existing PPC Deck Beams are in a deteriorated condition with reduced load carrying capacity. It is the Contractor's responsibility to account for the condition of the beams when developing construction procedures for removal and replacement of the superstructure.

If the Contractor's procedures for existing beam removal or placement of new beams involves placement of heavy equipment on the existing or new deck beams, a detailed procedure shall be submitted to the Engineer for approval. The procedure shall include calculations, sealed by an Illinois Licensed Structural Engineer, verifying the structural adequacy of the beams for the proposed loads. Cost included with Removal of Existing Superstructures.

Any damage done to the bridge during beam removal shall be repaired by the Contractor. Cost to be included in the cost of Removal of Existing Superstructures. Concrete Removal and Structural Repair of Concrete shall occur prior to placement of the new deck beams.

APPROVED
For Structural Adequacy Only
Ralph E. Anderson
Engineer of Bridges & Structures

STATION 159+99.25
REBUILT 20__ BY
STATE OF ILLINOIS
FAP RTE 749 SEC. 9BR
LOADING HS20
STRUCTURE NO. 023-0015

NAME PLATE
See Std. 515001

LOADING HS20-44
No Allowance for future wearing surface.

DESIGN SPECIFICATIONS
2002 AASHTO

DESIGN STRESSES

FIELD UNITS - EXISTING
f_c = 1,400 psi (Substructure)
f_s = 20,000 psi (Reinforcement)

FIELD UNITS - PROPOSED
f_c = 3,500 psi (Substructure)
f_c' = 5000 psi (Concrete Wearing Surface)
f_y = 60,000 psi (Reinforcement)

PRECAST PRESTRESSED UNITS
f_c = 5,000 psi
f_c' = 4,000 psi
f_s = 270,000 psi (1/2" Low Relax Strands)
f_s' = 201,960 psi (1/2" Low Relax Strands)

ITEM	UNIT	SUPER	SUB	TOTAL
Removal of Existing Superstructures	Each	1		1
Precast Prestressed Concrete Deck Beams (21" Depth)	Sq. Ft.	2840		2840
Precast Prestressed Concrete Deck Beams (27" Depth)	Sq. Ft.	1817		1817
Reinforcement Bars, Epoxy Coated	Pound	6600		6600
Steel Railing, Type SM	Foot	294		294
Name Plates	Each	1		1
Concrete Wearing Surface, 5"	Sq. Yd.	520		520
Protective Coat	Sq. Yd.	520		520
Bridge Deck Grooving	Sq. Yd.	520		520
Structural Repair of Concrete (Depth Less Than 5")	Sq. Ft.		12	12
Concrete Removal	Cu. Yd.		0.7	0.7
Concrete Structures	Cu. Yd.		0.8	0.8
Asbestos Bearing Pad Removal	Each		48	48

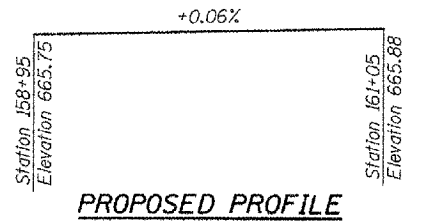
- INDEX OF SHEETS**
- 1) General Plan & Elevation
 - 2) Superstructure Details
 - 3) Wearing Surface Details
 - 4) Beam Details, Span 1 & 3
 - 5) Beam Details, Span 2
 - 6) Steel Railing Type SM With Concrete Wearing Surface
 - 7) Abutment Concrete Removal Details
 - 8) Abutment Details
 - 9) Pier Details

WATERWAY INFORMATION

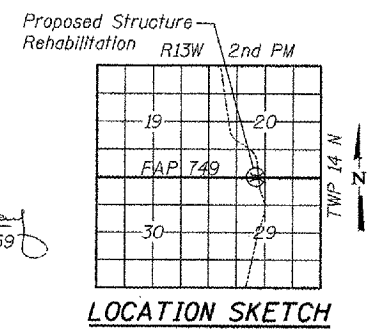
Drainage Area = 19.4 sq mi Low Grade Elev. 665.51 @ Sta. 162+25.00

Flood	Freq. Yr.	Q C.F.S.	Opening Sq. Ft.		Nat. H.W.E.	Head - Ft.		Headwater El.	
			Exist.	Prop.		Exist.	Prop.	Exist.	Prop.
10	1548	412	412	658.8	0.6	0.6	659.4	659.4	
Design	50	2453	501	501	659.6	1.0	1.0	660.6	660.6
Base	100	2851	546	546	660.0	1.2	1.2	661.2	661.2
Max. Calc.	500	3812	628	628	660.7	1.6	1.6	662.3	662.3

10 yr velocity thru Existing Bridge = 3.8 fps
10 yr velocity thru Proposed Bridge = 3.8 fps



PROPOSED PROFILE



LOCATION SKETCH

ILLINOIS STRUCTURAL ENGINEER
MARY COOMBE BLOXDORF
4859 SPRINGFIELD
STATE OF ILLINOIS

Mary Coombe Bloxdorf
ILLINOIS STRUCTURAL NO. 4859
EXPIRES: 11/30/08
DATE: 8/31/07

ILLINOIS DEPARTMENT OF TRANSPORTATION

SHEET TITLE
GENERAL PLAN & ELEVATION

PROJECT
IL 133 OVER HICKORY GROVE CREEK
FAP 749 SECTION 9BR
EDGAR COUNTY
STATION 159+99.25
STRUCTURE NUMBER 023-0015

PROPERTY NO. 03061-11
SCALE
DATE 8/31/07
DRAWN BY TFG/CFC
CHECKED BY KPS/BD/MCB
DATE

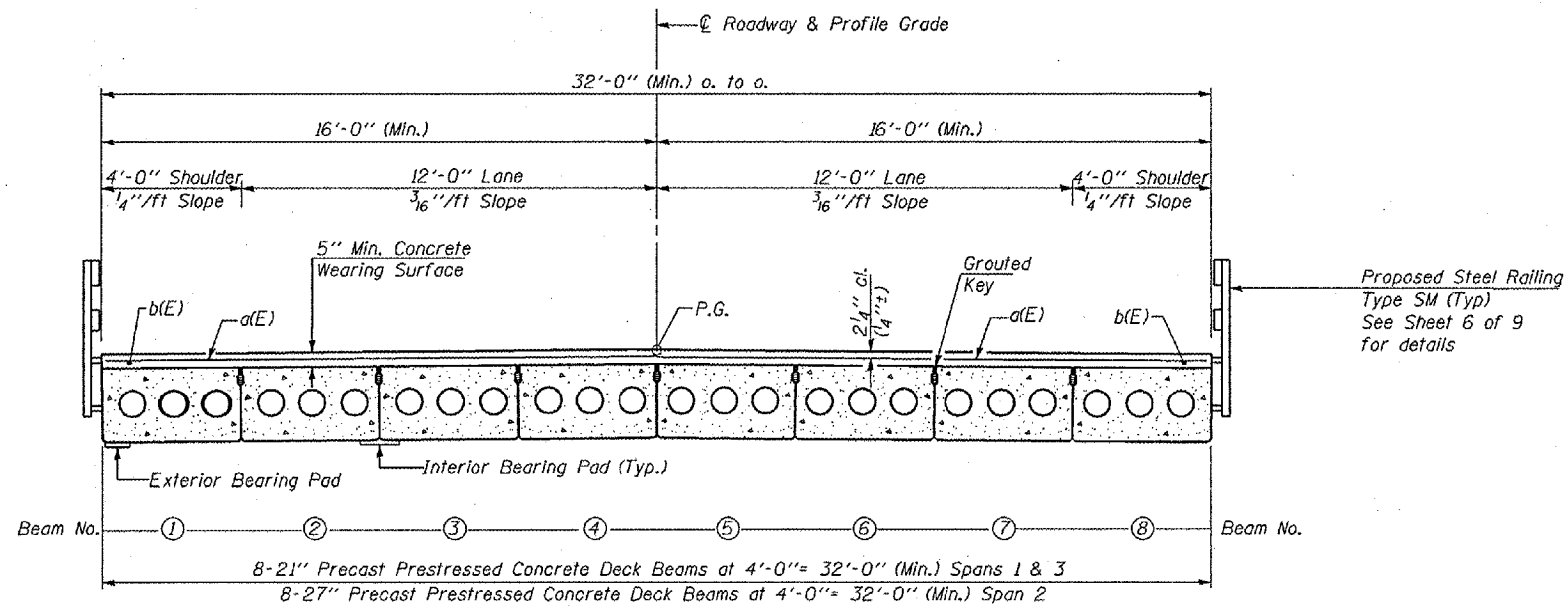
COOMBE-BLOXDORF P.C.
Engineers / Land Surveyors
Springfield, Illinois
Design Firm License No. 184-002703

1
OF 9 SHTS

PLOT DATE = 08/31/2007
FILE NAME = \\p10601023-0015-ent11-epa.dgn
PLOT SCALE = 1/8"=1'-0"
USER NAME = TFG

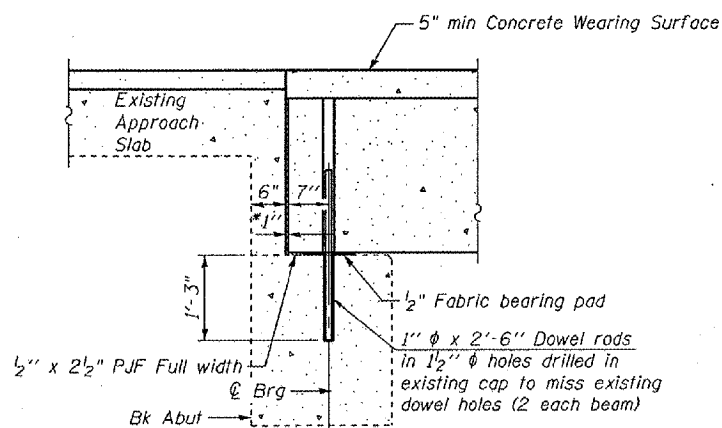
ROUTE NO.	SECTION	COUNTY	SHEETS	SHEET	SHEET NO.
FAP 749	9BR	EDGAR	31	9	2
FED. ROAD DIST. NO.		ILLINOIS	FED. AID PROJECT		

Contract #70389

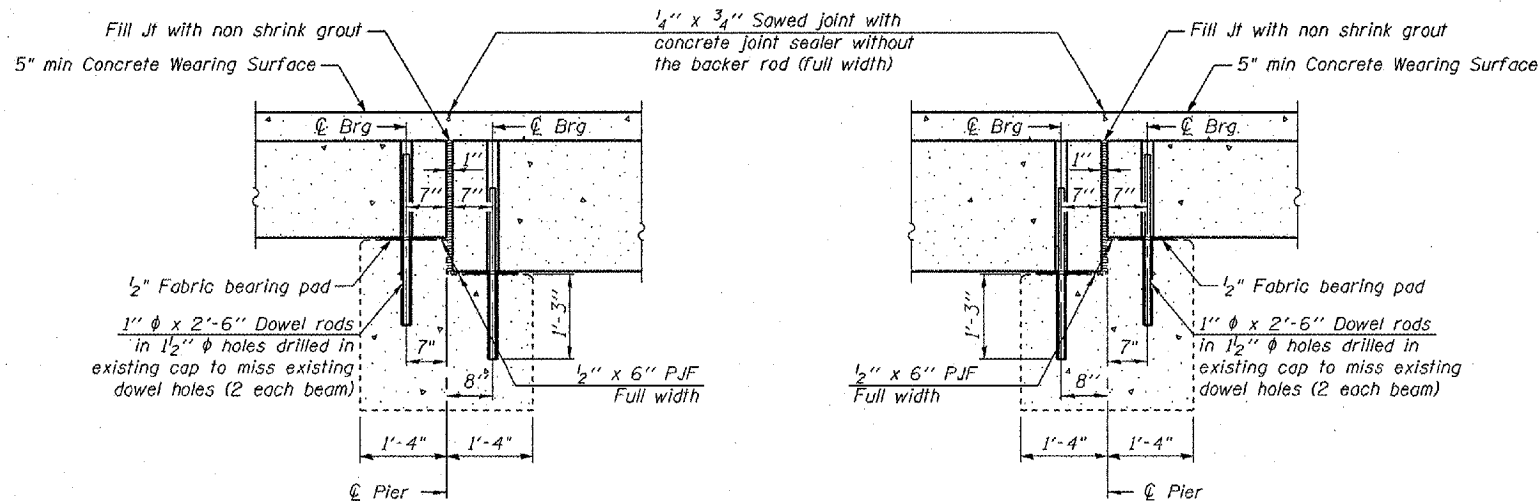


CROSS SECTION
(Looking East) (21" beams shown)

*1" Jt. shall be filled with non-shrink grout.
1" dimension may vary to accommodate tolerance in beam lengths.

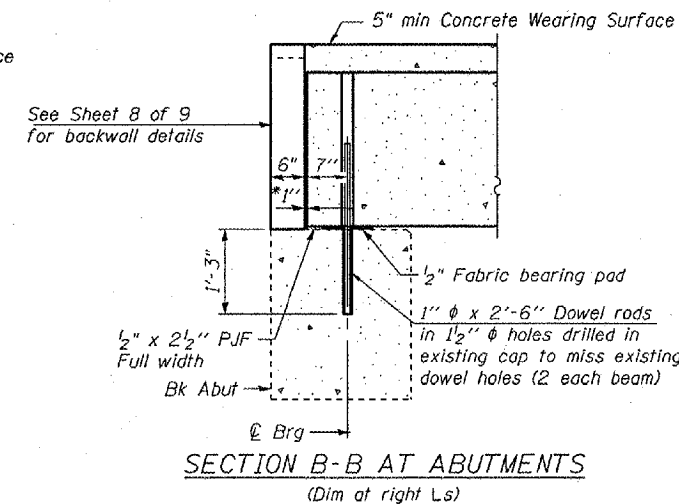


SECTION A-A AT ABUTMENTS
(Dim at right Ls)

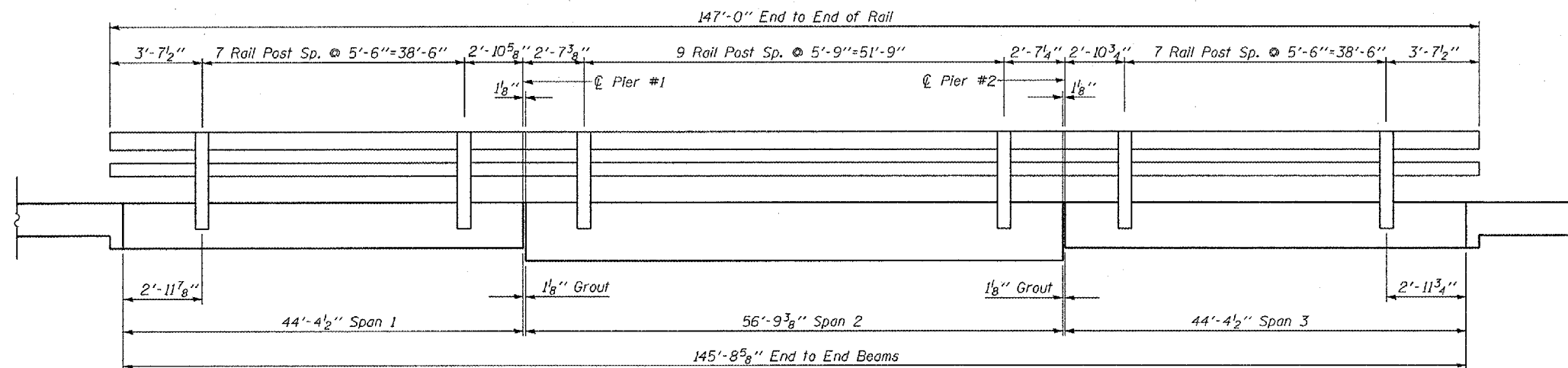


SECTION THRU PIER 1
(Dim at right Ls) (Looking NW)

SECTION THRU PIER 2
(Dim at right Ls) (Looking NW)



SECTION B-B AT ABUTMENTS
(Dim at right Ls)

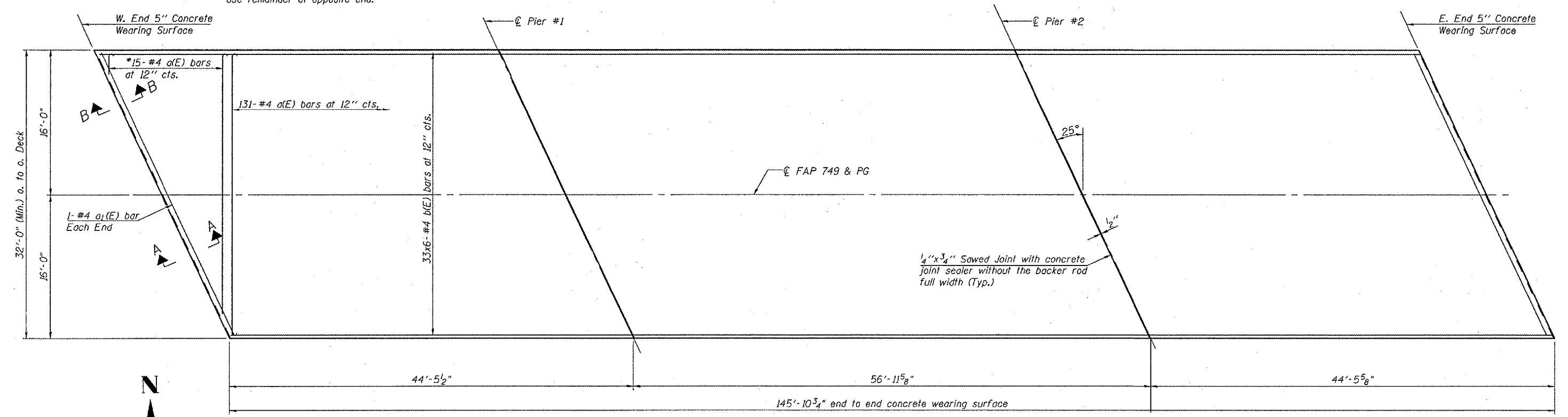


RAIL POST SPACING

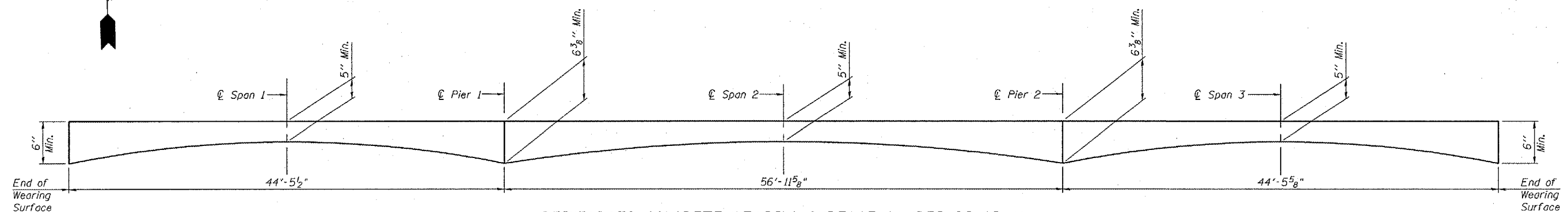
PLOT DATE : 08/31/2007
FILE NAME : ..\8023-005-ent2-super-detail.dgn
USER NAME : CFC

ILLINOIS DEPARTMENT OF TRANSPORTATION	
SHEET TITLE SUPERSTRUCTURE DETAILS	
PROJECT IL 133 OVER HICKORY GROVE CREEK FAP 749 SECTION 9BR EDGAR COUNTY STATION 159+99.25 STRUCTURE NUMBER 023-0015	PROJECT NO. 03061-11 DATE 8/31/07 DRAWN BY TFG/CFC CHECKED BY KPS/BD/MCB DRAWING NO.
COOMBE-BLOXDORF P.C. Engineers / Land Surveyors Springfield, Illinois Design Firm License No. 184-002703	
2 OF 9 SHTS	

*Cut a(E) bars to fit skew and use remainder at opposite end.



PLAN
Concrete Wearing Surface

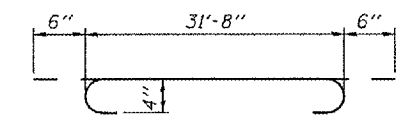


REINFORCED CONCRETE WEARING SURFACE CAMBER DIAGRAM

MIN. BAR LAP
#4 bar = 1'-4"

NOTES

Bars indicated thus 33x6-#4 etc. indicates 33 lines of bars with 6 lengths per line.
After beams have been erected, holes shall be drilled into substructure and anchor dowels placed. Dowel holes shall be filled with non-shrink grout to top of beam and allowed to cure minimum 24 hours prior to grouting shear keys.
See Sheet 2 of 9 for Sections at Abutment and Piers.



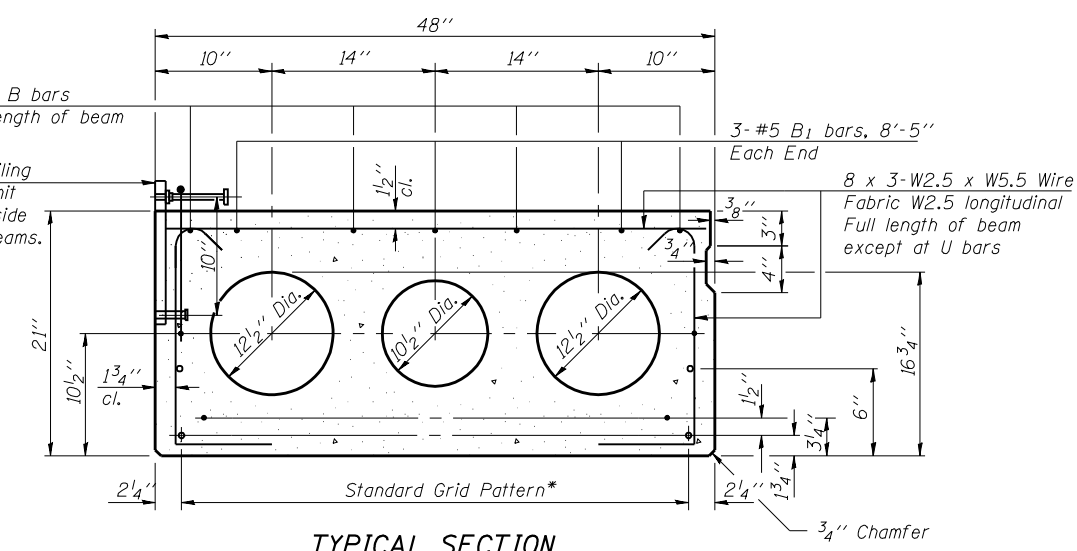
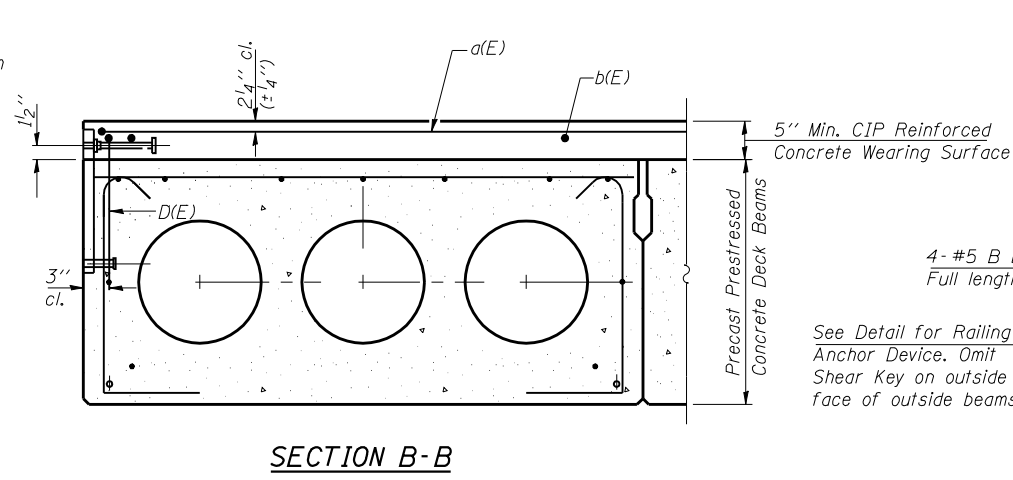
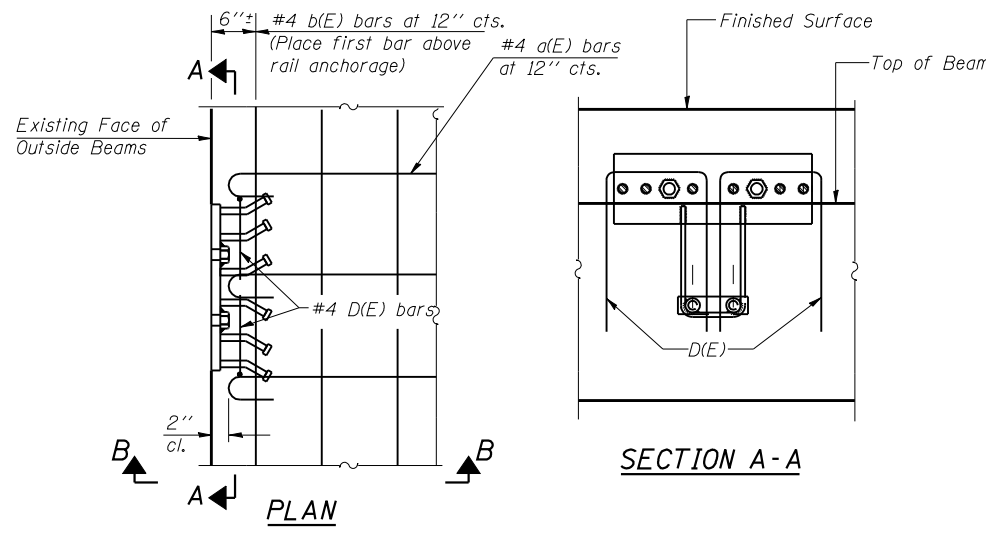
a(E) BAR

SUPERSTRUCTURE
BILL OF MATERIAL

Bar	No.	Size	Length	Shape
a(E)	146	#4	32'-8"	
a1(E)	2	#4	34'-11"	
b(E)	198	#4	25'-4"	
Conc. Wearing Surface			Sq. Yd.	520
Reinforcement Bars, Epoxy Coated			Pound	6580

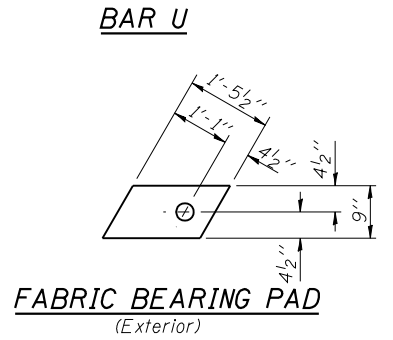
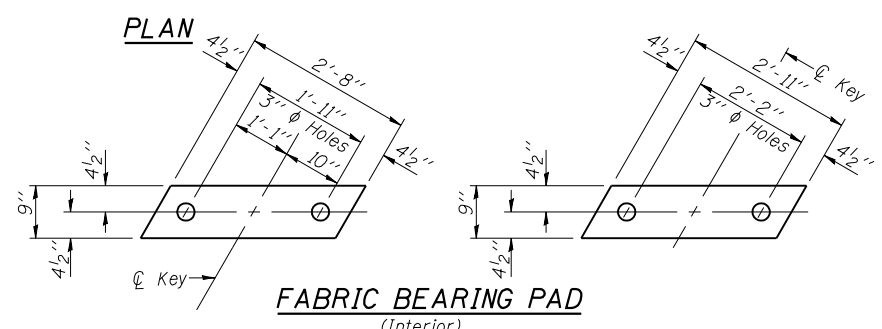
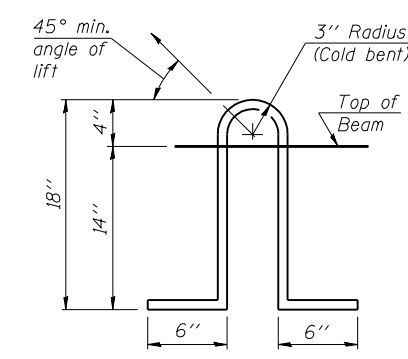
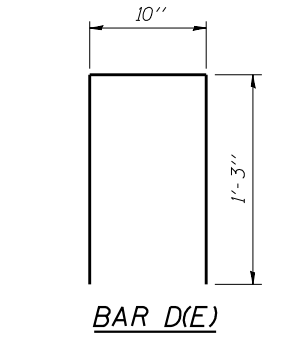
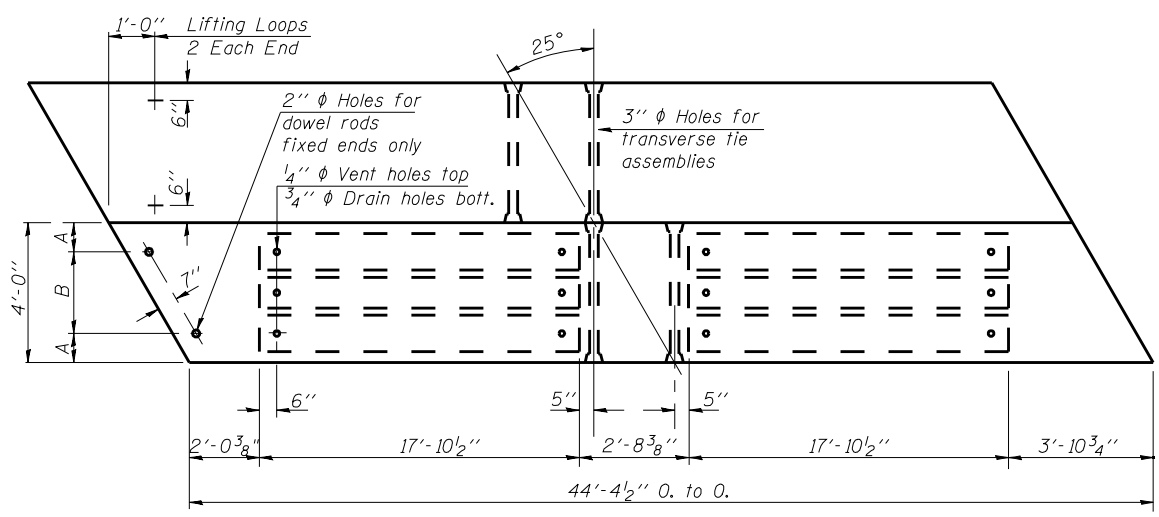
ILLINOIS DEPARTMENT OF TRANSPORTATION	
SHEET TITLE WEARING SURFACE DETAILS	
PROJECT IL 133 OVER HICKORY GROVE CREEK FAP 749 SECTION 9BR EDGAR COUNTY STATION 159+99.25 STRUCTURE NUMBER 023-0015	PROJECT NO. 03061-11 SCALE DATE 8/31/07 DRAWN BY TFG CHECKED BY KPS/BO/MCB DRAWING NO.
COOMBE-BLOXDORF P.C. Engineers / Land Surveyors Springfield, Illinois Design Firm License No. 184-002703	
3 OF 9 SHTS	

PLOT DATE = 08/31/2007
 PLOT SCALE = 1/8" = 1'-0"
 PLOT USER = JFC
 USER NAME = JFC



BEAM #	A	B
1	1'-1"	1'-10"
2	1'-1"	1'-10"
3	10"	2'-4"
4	1'-1"	1'-10"
5	1'-1"	1'-10"
6	10"	2'-4"
7	1'-1"	1'-10"
8	1'-1"	1'-10"

- * TRANSVERSE STRAND PLACEMENT GUIDELINES**
- 1) Place strands symmetrically about centerline of beam.
 - 2) The minimum distance from center to center of strands in all directions shall be 2".
 - 3) The minimum clearance from strand to dowel hole shall be 1/2".
 - 4) The minimum clearance from strand to void shall be 1/2".
- Vertical placement of strands shall not be adjusted to satisfy the above guidelines.



NOTES

Prestressing steel shall be uncoated high strength, low relaxation 7-wire strand, Grade 270. The nominal diameter shall be 1/2" and the nominal cross-sectional area shall be 0.153 sq. in. Lifting loops shall be 2 - 1/2" diameter 270 ksi strands, as shown. The 1" rods in the transverse tie assembly shall be tightened to a snug fit and the threads set. Pockets that receive transverse tie bar on outside shall be filled with grout after transverse tie assembly is in place. The bearing seat surfaces shall be adjusted by shimming to assure firm and even bearing. Two 1/8" fabric adjusting shims of the dimensions of the Exterior Bearing Pad shall be provided for each bearing. Keyway surfaces shall be cleaned to remove form oil or other bond breaking material prior to shipment of the beams. Cleaning shall be done by sandblasting the keyway areas between top of the beam and the bottom edge of the key. Corrosion Inhibitor, per Articles 1020.05(b)(12) and 1021.06 of the Standard Specifications, shall be used in the concrete for precast prestressed concrete deck beams. Required Release Strength, f'ci, shall be 4,000 p.s.i. The Rail Anchorage shall be cast with the beam and the wearing surface shall be cast in the field. Formwork necessary for the wearing surface may be secured using the bottom rail anchorage inserts and/or additional inserts cast into the beam. Drilling into the beam will not be permitted. See Sheet 2 of 9 for cross section and rail post spacing. Non prestressing steel shall conform to the requirements of ASTM A 706 Gr 60 (IL Modified). See Sheet 6 of 9 for rail details.

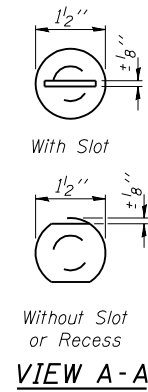
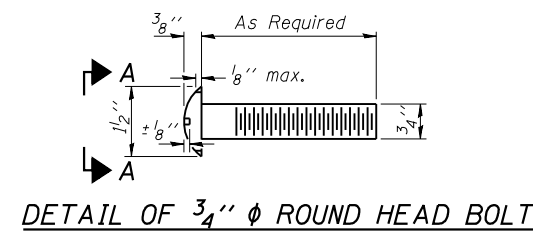
BILL OF MATERIAL

Precast Prestressed Conc. Deck Bms. (21" depth)	Sq. Ft.	2840
Weight of beam = 34230 lbs.		

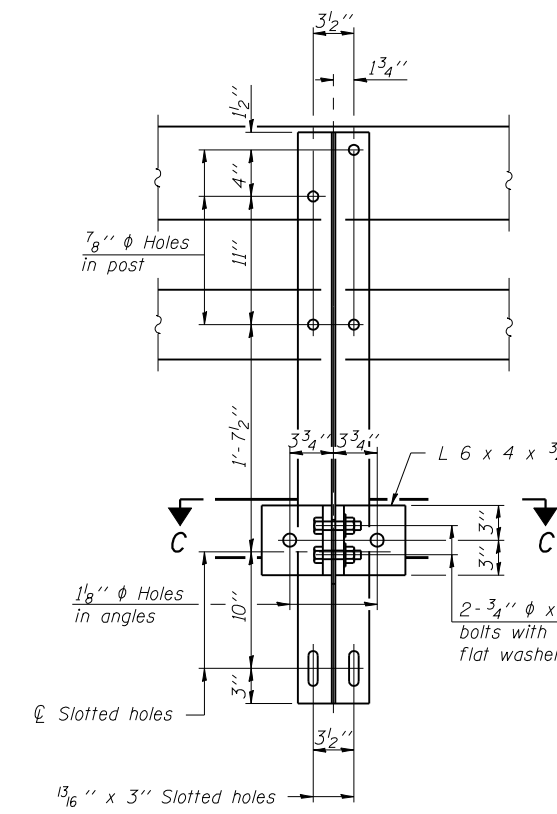
ILLINOIS DEPARTMENT OF TRANSPORTATION

SHEET TITLE		PROJECT NO.	
BEAM DETAILS SPANS 1 & 3		03061-11	
PROJECT	IL 133 OVER HICKORY GROVE CREEK	DATE	8/31/07
	FAP 749 SECTION 9BR	DRAWN BY	TFG
	EDGAR COUNTY	CHECKED BY	KPS/BD/MCB
	STATION 159+99.25	DRAWING NO.	
	STRUCTURE NUMBER 023-0015		
COOMBE-BLOXDORF P.C.		4	
Engineers / Land Surveyors		OF 9 SHTS	
Springfield, Illinois			
Design Firm License No. 184-002703			

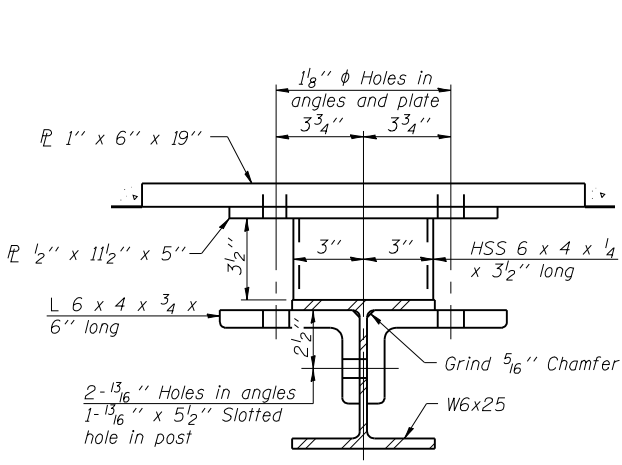
DATE = 08/31/07
FILE NAME = 023-0015-9BR-9BR-4-BEAM-DETAILS-11-3.dgn
PLOT SCALE = 0.25000 1" = 1'-0"
USER NAME = CFC



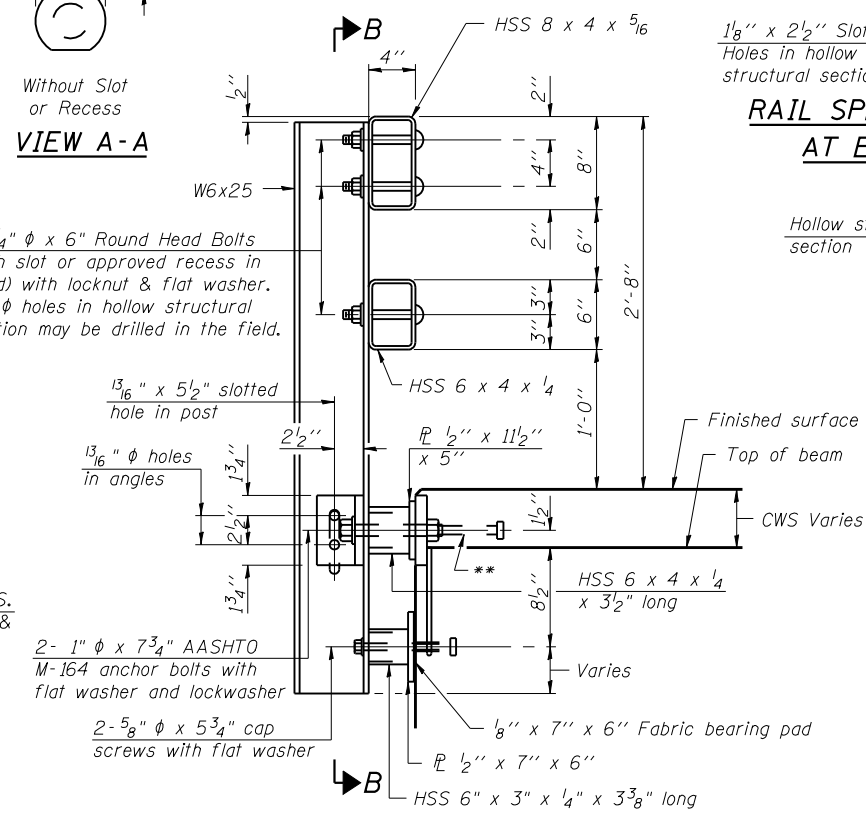
4-3/4" ϕ x 6" Round Head Bolts
(With slot or approved recess in head) with locknut & flat washer.
7/8" ϕ holes in hollow structural section may be drilled in the field.



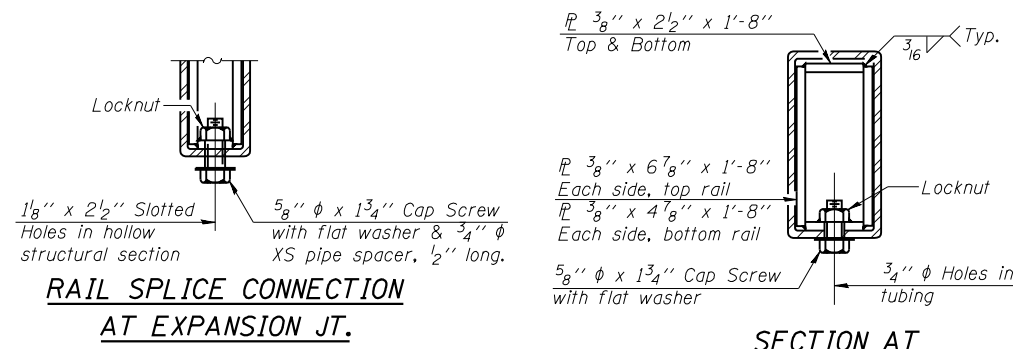
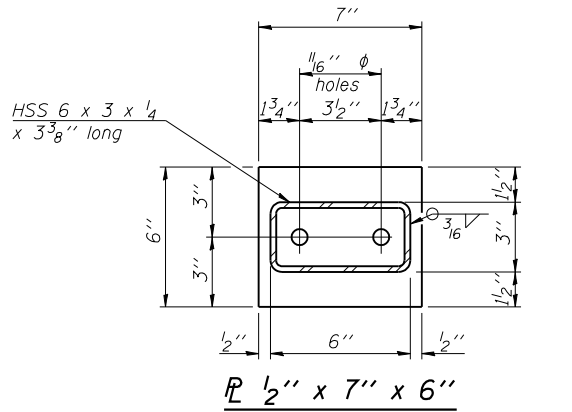
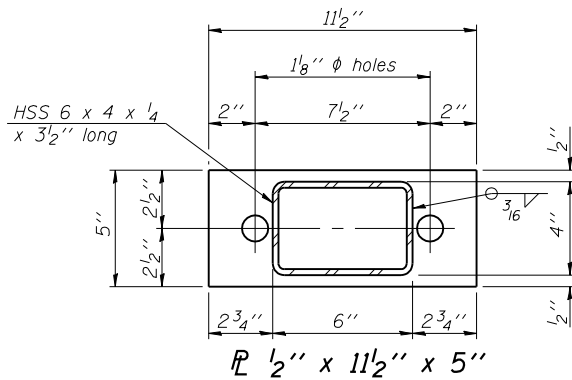
SECTION B-B



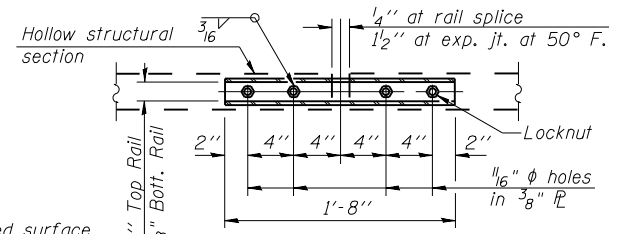
SECTION C-C



SECTION AT RAIL POST

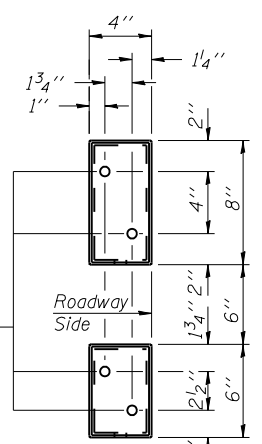


RAIL SPLICE CONNECTION
AT EXPANSION JT.

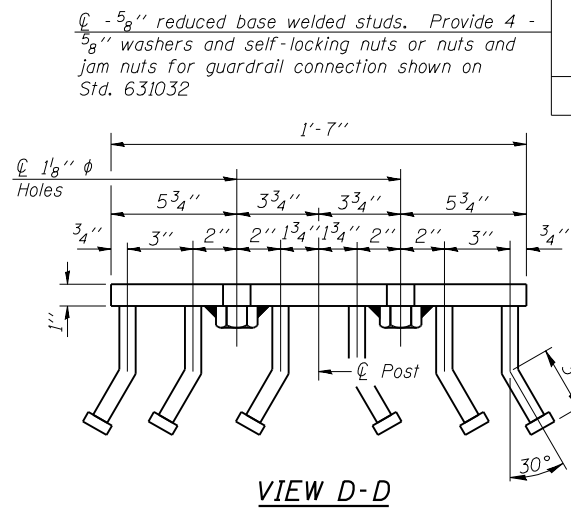


PLAN-BOTT. SPLICE P
TYPICAL

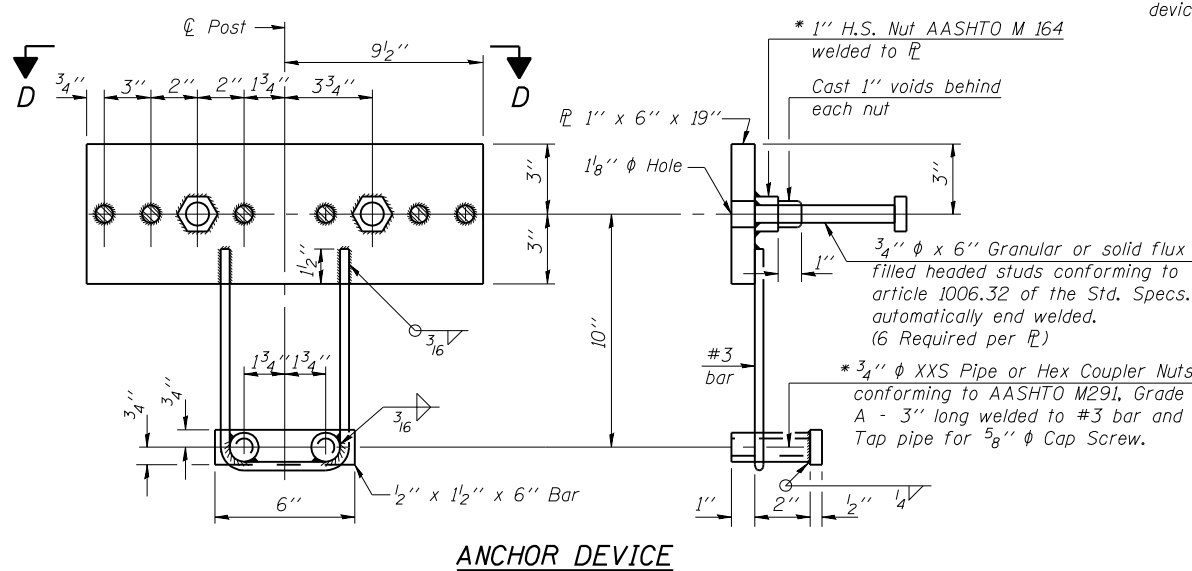
SECTION AT
RAIL SPLICE



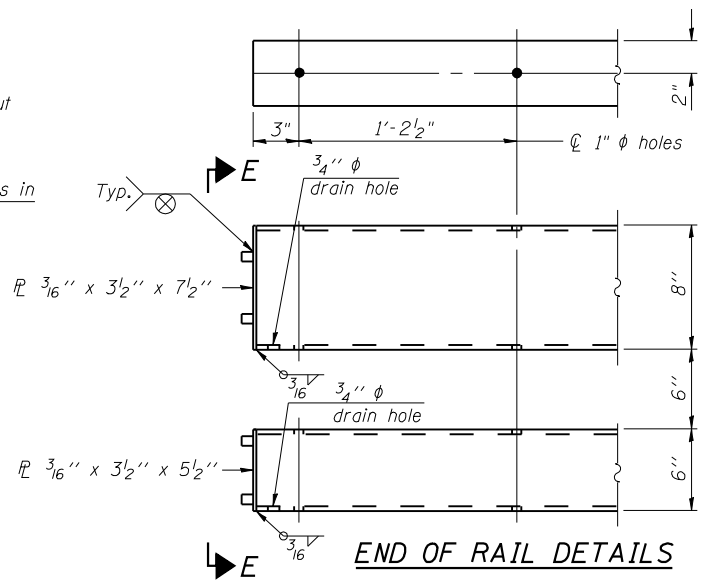
VIEW E-E



VIEW D-D



ANCHOR DEVICE



END OF RAIL DETAILS

Notes:
All field drilled holes shall be coated with an approved zinc rich paint before erection.
For multi-span bridges, sufficient 1/4" x 6" x 1'-2" galvanized steel shims shall be provided to align rail between adjacent spans. Cost included with Steel Bridge Rail, Type SM.
Steel rail elements shall be galvanized according to Article 509.05 of the Standard Specifications.
** The studs of the anchor devices shall be placed below the top reinforcement bars and the outermost longitudinal reinforcement bar shall be placed directly above the studs of the rail post anchor device.

BILL OF MATERIAL

Item	Unit	Quantity
Steel Railing, Type SM	Foot	294

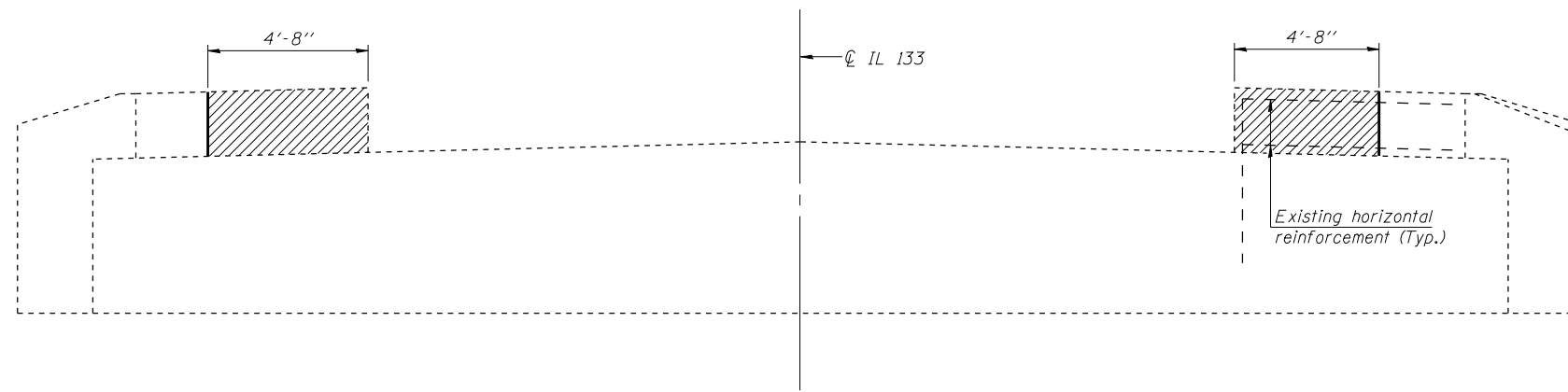
ILLINOIS DEPARTMENT OF TRANSPORTATION

SHEET TITLE STEEL RAILING, TYPE SM WITH CONCRETE WEARING SURFACE		PROJECT NO. 03061-11
PROJECT IL 133 OVER HICKORY GROVE CREEK FAP 749 SECTION 9BR EDGAR COUNTY STATION 159+99.25 STRUCTURE NUMBER 023-0015	SCALE DATE 8/31/07	DRAWN BY TFG
COOMBE-BLOXDORF P.C. Engineers / Land Surveyors Springfield, Illinois Design Firm License No. 184-002703		CHECKED BY BD/MCB
DRAWING NO. 6		DF 9 SHTS

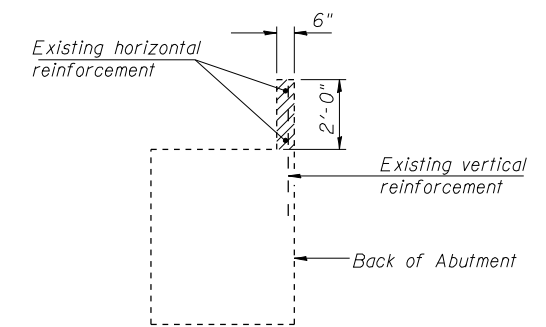
PLOT DATE = 08/31/07
FILE NAME = 023-0015-0015-9BR-FAP-34CWS.dgn
PLOT SCALE = 0.250000 1" = 1"
USER NAME = CFC

* Threaded areas shall be plugged or blocked off during casting of beam. Galvanized after fabrication.

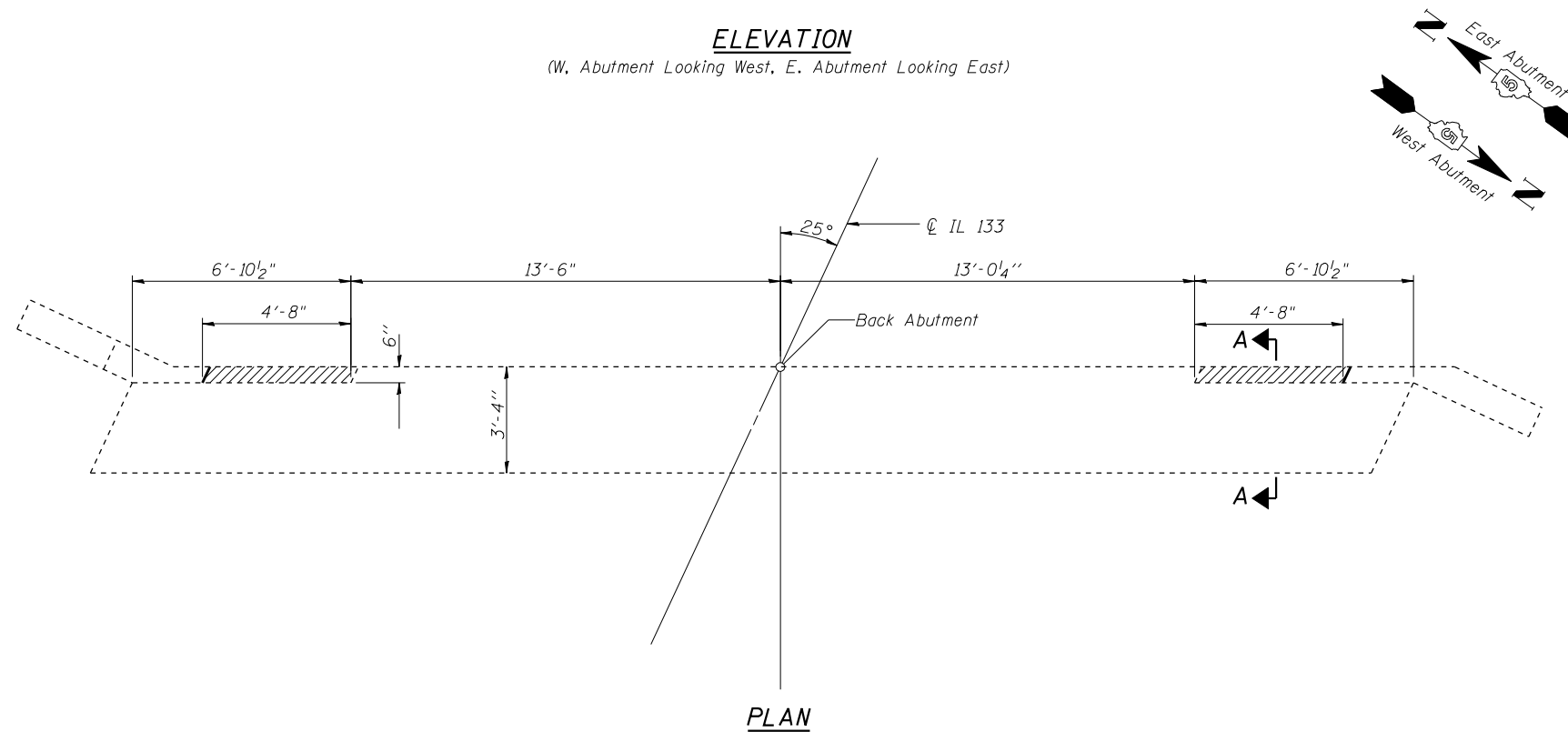
Contract #70389




ELEVATION
(W. Abutment Looking West, E. Abutment Looking East)



SECTION A-A



PLAN

 Limits of concrete removal

**TWO ABUTMENTS
BILL OF MATERIAL**

ITEM	UNIT	TOTAL
Concrete Removal	Cu. Yd.	0.7

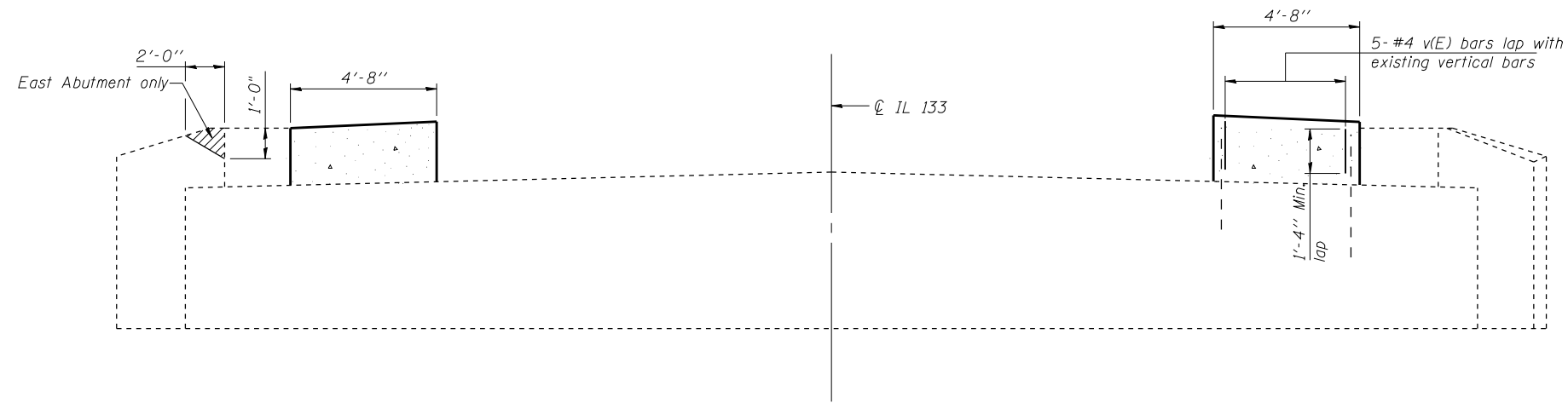
NOTES

Existing vertical & horizontal reinforcement bars extending into the new construction shall be cleaned, straightened and incorporated into the new construction. Any reinforcement bars damaged during concrete removal shall be replaced with an approved bar splicer or anchorage system. Cost included with "Concrete Removal".

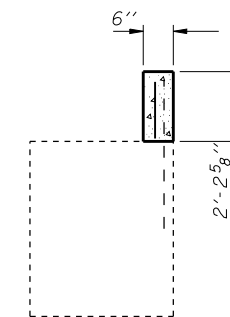
PLOT DATE = 08/31/2007
FILE NAME = I:\023\0015\enr1-abut-det\dlis.dgn
PLOT SCALE = 1/8" = 1'-0"
USER NAME = CFC

ILLINOIS DEPARTMENT OF TRANSPORTATION	
SHEET TITLE ABUTMENT CONCRETE REMOVAL DETAILS	
PROJECT IL 133 OVER HICKORY GROVE CREEK FAP 749 SECTION 9BR EDGAR COUNTY STATION 159+99.25 STRUCTURE NUMBER 023-0015	PROJECT NO. 03061-11 SCALE DATE 8/31/07 DRAWN BY TFG CHECKED BY KPS/BD/MCB DRAWING NO.
COOMBE-BLOXDORF P.C. Engineers / Land Surveyors Springfield, Illinois Design Firm License No. 184-002703	
7 OF 9 SHTS	

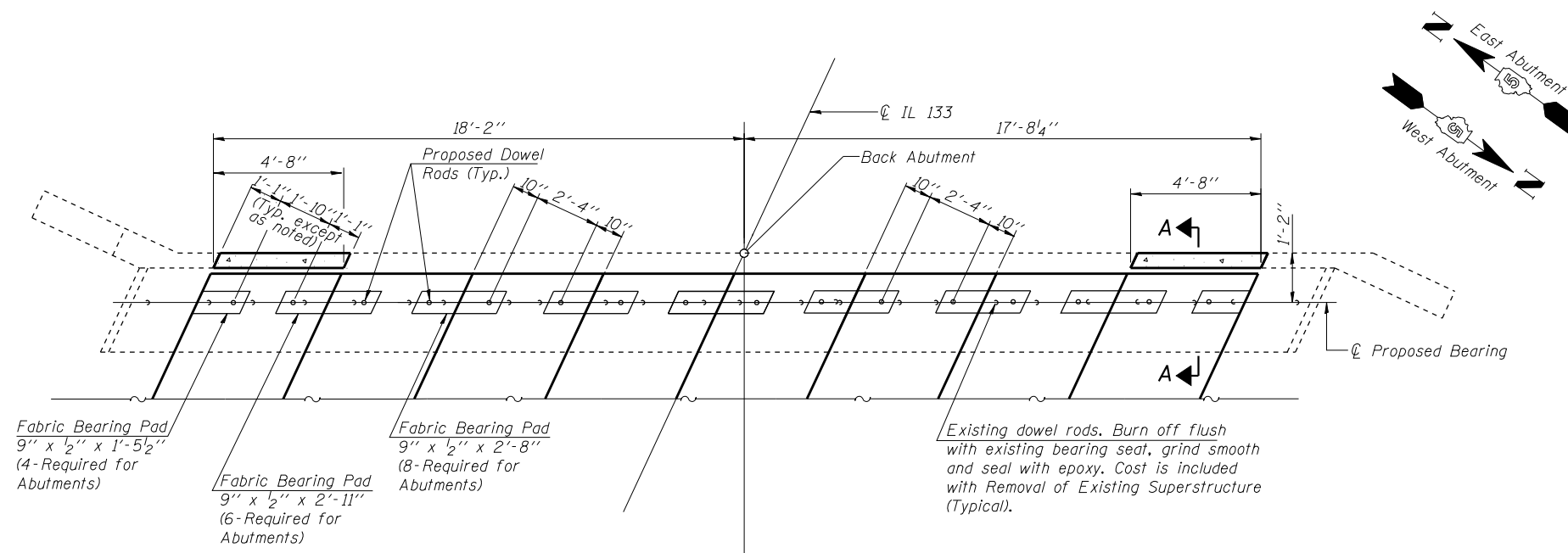
Contract #70389



ELEVATION
(W. Abutment Looking West, E. Abutment Looking East)



SECTION A-A



PLAN

LEGEND

Structural Repair of Concrete (Depth less than 5')

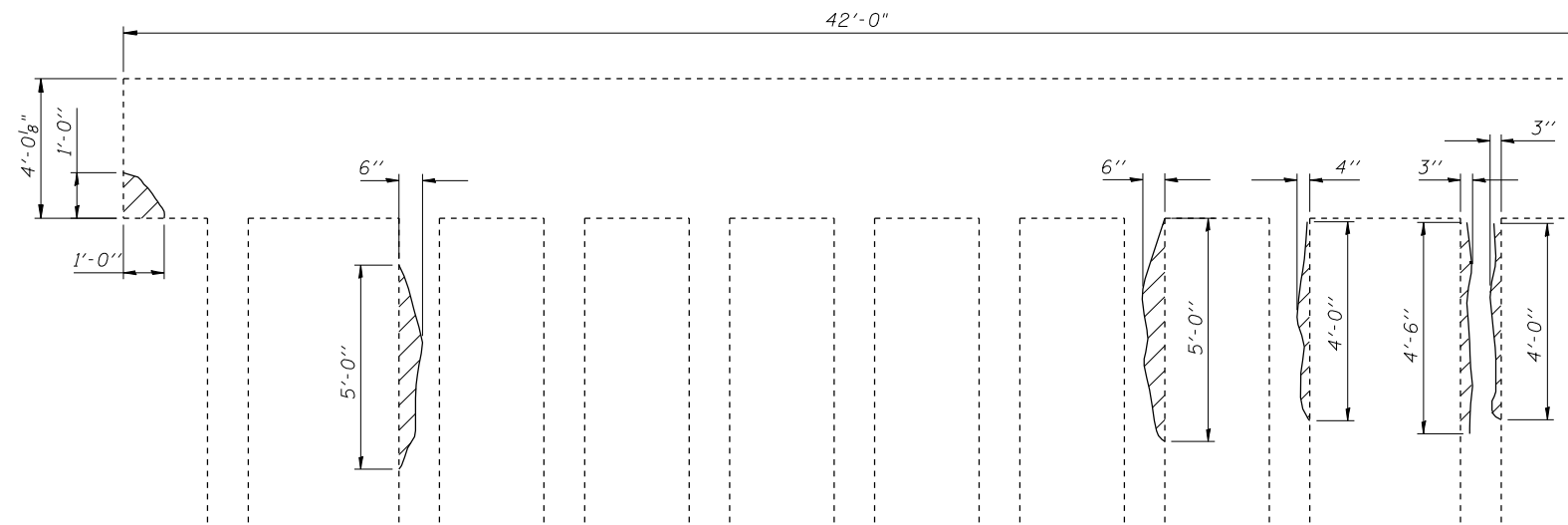
**TWO ABUTMENTS
BILL OF MATERIAL**

Bar	No.	Size	Length	Shape
v(E)	20	#4	1'-7"	—
Concrete Structures			Cu. Yd.	0.8
Structural Repair of Conc. (Depth Less Than 5')			Sq. Ft.	2
Reinforcement Bars, Epoxy Coated			Pound	20

ILLINOIS DEPARTMENT OF TRANSPORTATION

SHEET TITLE ABUTMENT DETAILS	
PROJECT IL 133 OVER HICKORY GROVE CREEK FAP 749 SECTION 9BR EDGAR COUNTY STATION 159+99.25 STRUCTURE NUMBER 023-0015	PROJECT NO. 03061-11 SCALE DATE 8/31/07 DRAWN BY TFG CHECKED BY KPS/BD/MCB DRAWING NO.
COOMBE-BLOXDORF P.C. Engineers / Land Surveyors Springfield, Illinois Design Firm License No. 184-002703	
8 OF 9 SHTS	

Contract #70389



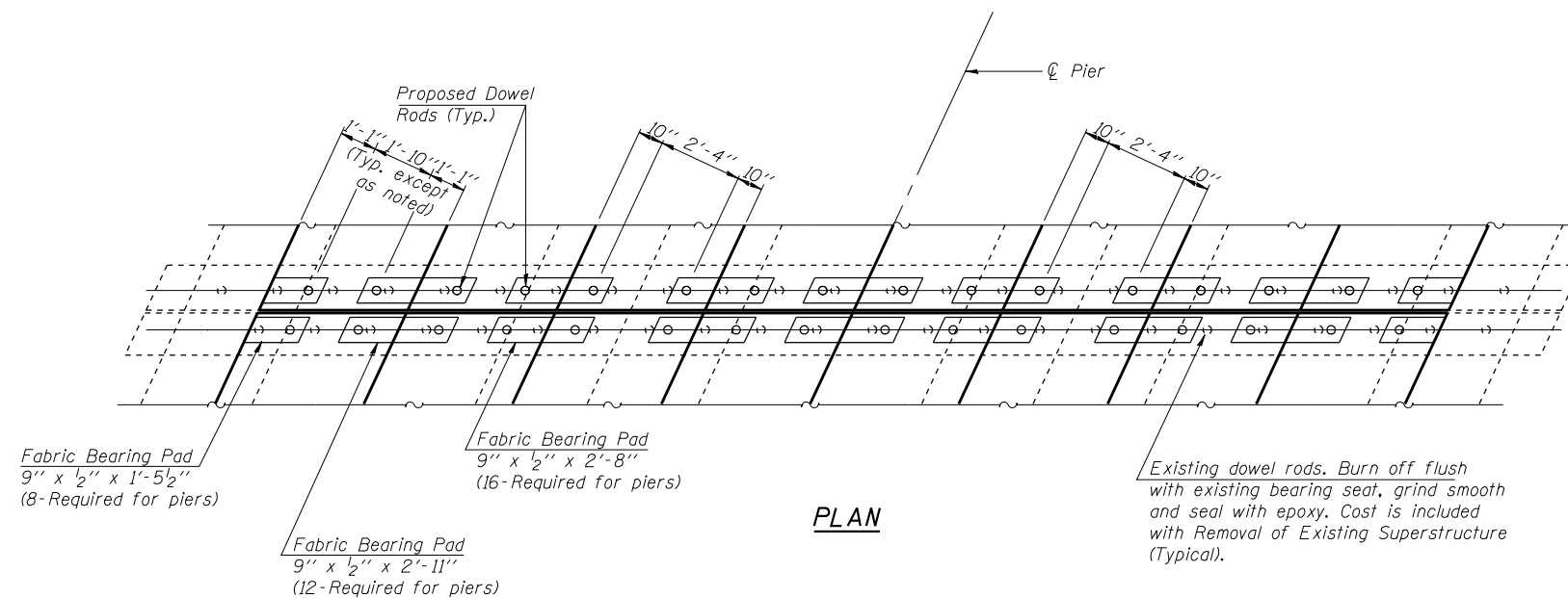
WEST FACE PIER 2

LEGEND

Structural Repair of Concrete (Depth less than 5")

BILL OF MATERIAL

Item	Unit	Total
Structural Repair of Concrete (Depth Less Than 5")	Sq. Ft.	10

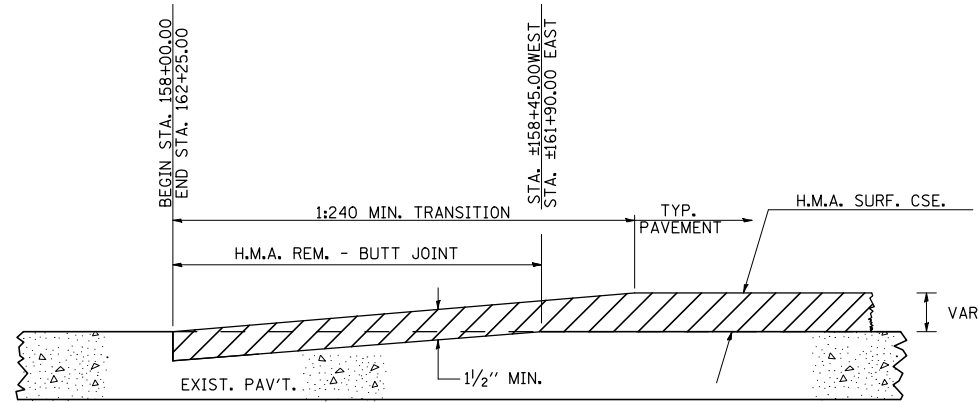


PLAN

ILLINOIS DEPARTMENT OF TRANSPORTATION

SHEET TITLE		PIER DETAILS	
PROJECT		PROJECT NO.	03061-11
IL 133 OVER HICKORY GROVE CREEK		SCALE	
FAP 749 SECTION 9BR		DATE	8/31/07
EDGAR COUNTY		DRAWN BY	TFG
STATION 159+99.25		CHECKED BY	BD/MCB
STRUCTURE NUMBER 023-0015		DRAWING NO.	9
COOMBE-BLOXDORF P.C.		OF 9 SHTS	
Engineers / Land Surveyors			
Springfield, Illinois			
Design Firm License No. 184-002703			

F.A.P. RTE.	SECTION	COUNTY	TOTAL SHEETS	SHEET NO.
749	(9BR)BR	EDGAR	31	17
STA.		TO STA.		
FED. ROAD DIST. NO.	ILLINOIS	FED. AID PROJECT		



BUTT JOINT DETAIL

PLOT DATE = 8/29/2007
 FILE NAME = F:\A\9439\11\Hickory Grove Ck\Drawings\Detail.dgn
 PLOT SCALE = 42.352% / IN.
 USER NAME = rcook

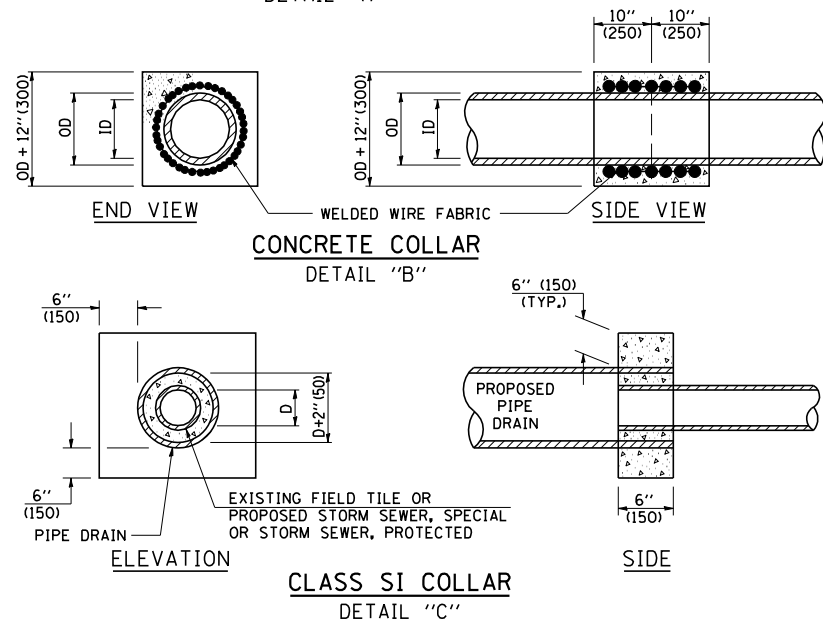
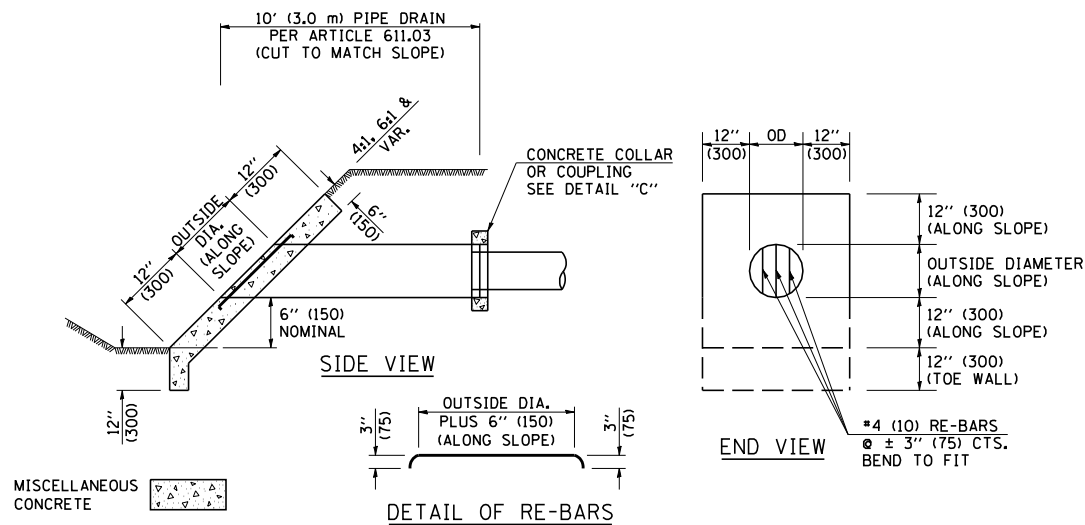
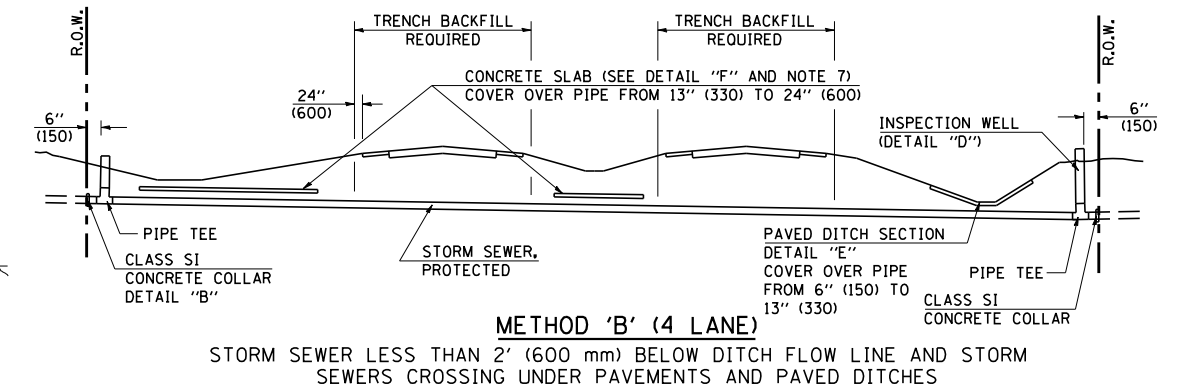
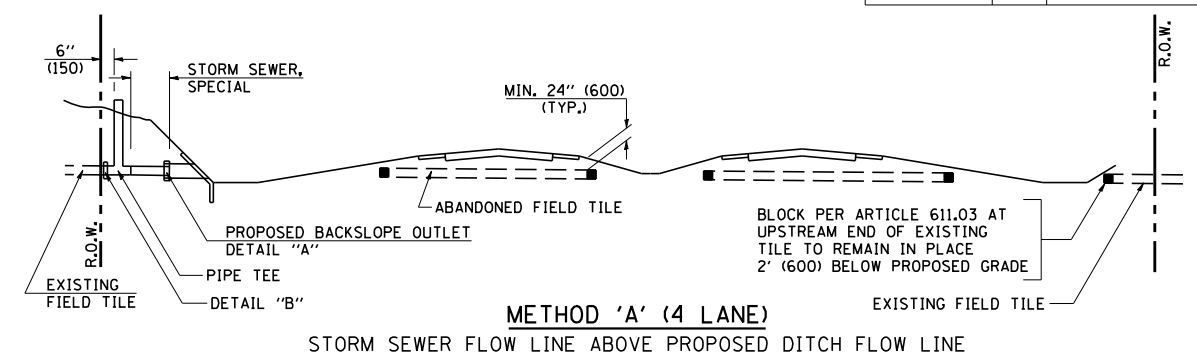
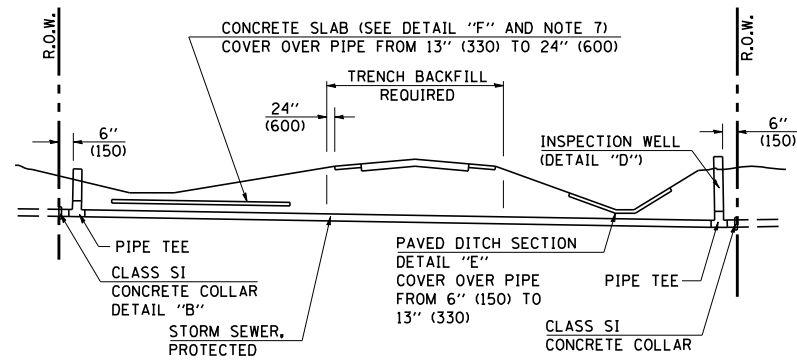
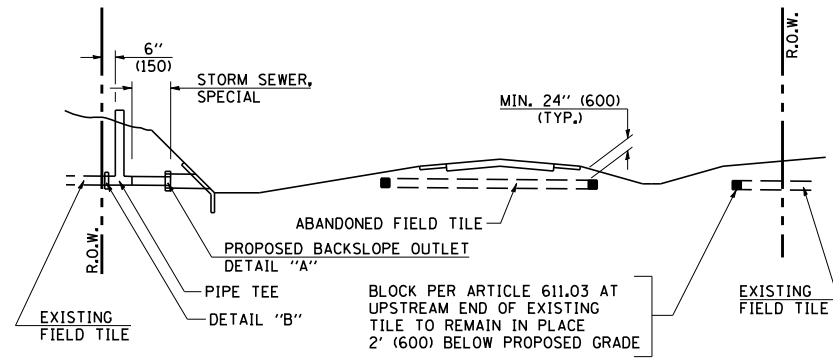
REVISIONS	
NAME	DATE

ILLINOIS DEPARTMENT OF TRANSPORTATION

ROADWAY DETAILS

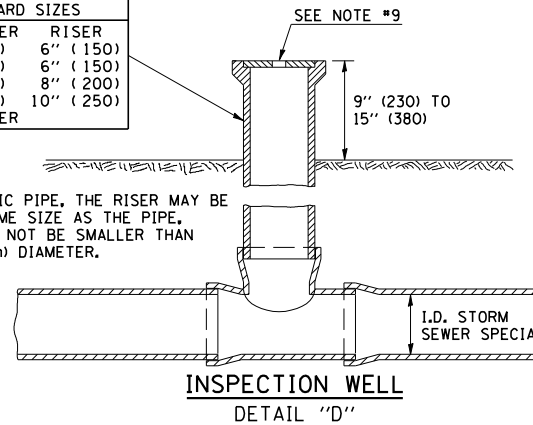
SCALE: VERT. DRAWN BY
 HORIZ. CHECKED BY
 DATE

F.A.P. RTE.	SECTION	COUNTY	TOTAL SHEETS	SHEET NO.
749	9BR/BR	EDGAR	31	17A
STA.		TO STA.		
FED. ROAD DIST. NO.	ILLINOIS	FED. AID PROJECT		



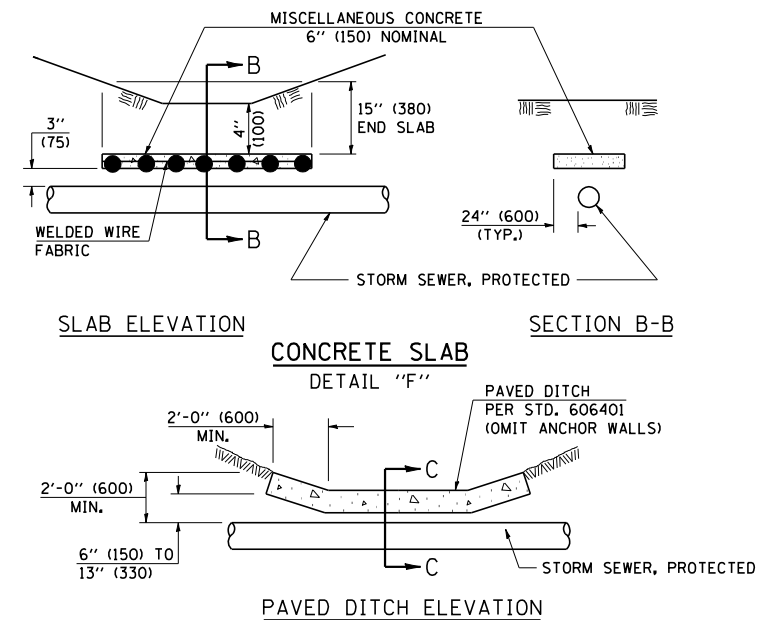
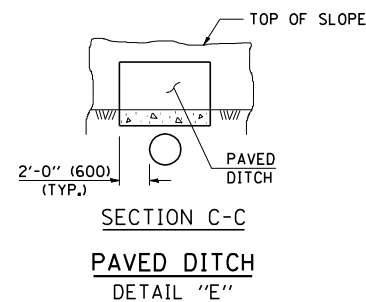
STORM SEWER	RISER
6" (150)	6" (150)
8" (200)	6" (150)
10" (250)	8" (200)
12" (300)	10" (250)
OR GREATER	

FOR PLASTIC PIPE, THE RISER MAY BE OF THE SAME SIZE AS THE PIPE, BUT SHALL NOT BE SMALLER THAN 4" (100 mm) DIAMETER.



GENERAL NOTES

- EXISTING FIELD TILE ENCOUNTERED BY EXPLORATION TRENCH SHALL BE INSPECTED BY THE ENGINEER FOR UNOBSTRUCTED FLOW WITHIN THE LIMITS OF THE RIGHT-OF-WAY.
- ONLY FIELD TILE THAT DOES NOT HAVE SATISFACTORY FLOW AND OR HAS VISIBLE SIGNS OF DETERIORATION (SINK HOLES, ETC.) SHALL BE REPLACED WITHIN THE LIMITS OF THE RIGHT-OF-WAY IN ACCORDANCE WITH METHOD "B".
- INSPECTION WELLS SHALL BE CONSTRUCTED APPROXIMATELY 6" (150 mm) INSIDE OF BOTH RIGHT-OF-WAY LINES AT ALL FIELD TILE LOCATIONS.
- EXISTING FIELD TILE ABANDONED UNDER EXISTING PAVEMENTS OR PAVED SHOULDERS SHALL BE FILLED WITH FLOWABLE GROUT AS DIRECTED BY THE ENGINEER. THIS WORK WILL BE PAID FOR ACCORDING TO ARTICLE 109.04.
- NON-CIRCULAR FIELD TILE SHALL BE REPLACED WITH STORM SEWER, SPECIAL OF AT LEAST THE SAME CROSS SECTIONAL AREA. ALL EXISTING FIELD TILE SHALL BE REPLACED WITH STORM SEWER OF THE TYPE REQUIRED FOR THE MINIMUM DEPTH OF COVER.
- THE 6" (150 mm) CONCRETE SLAB OR DITCH LINING SHALL BE POURED THE LENGTH OF THE TRENCH AT ALL DITCH FLOW LINE LOCATIONS WITHIN THE RIGHT-OF-WAY WITH LESS THAN 2' (600 mm) OF EARTH COVER. MISCELLANEOUS CONCRETE SHALL BE USED ACCORDING TO SECTION 611.
- ALL MISCELLANEOUS SLABS, APRONS AND DITCH LININGS SHALL BE REINFORCED WITH WELDED WIRE FABRIC AS SHOWN FOR PAVED DITCH IN STANDARD 606401.
- HEADWALL FOR BACKSLOPE OUTLET MAY BE USED FOR PIPE DRAIN DIAMETERS UP TO 10" (250 mm). SPECIAL DESIGNS WILL BE REQUIRED FOR LARGER SIZES.
- THE INSPECTION WELL LID FOR P.C.C. PIPE SHALL BE CONSTRUCTED OF 3/8" (10 mm) CAST IRON AND PROVIDED WITH A 1" (25 mm) DIAMETER HOLE IN CENTER. THE LID FOR THE OTHER PIPE MATERIALS SHALL BE A GRATE ASSEMBLY PREFABRICATED FOR AND COMPATIBLE WITH THE PIPE SYSTEM.

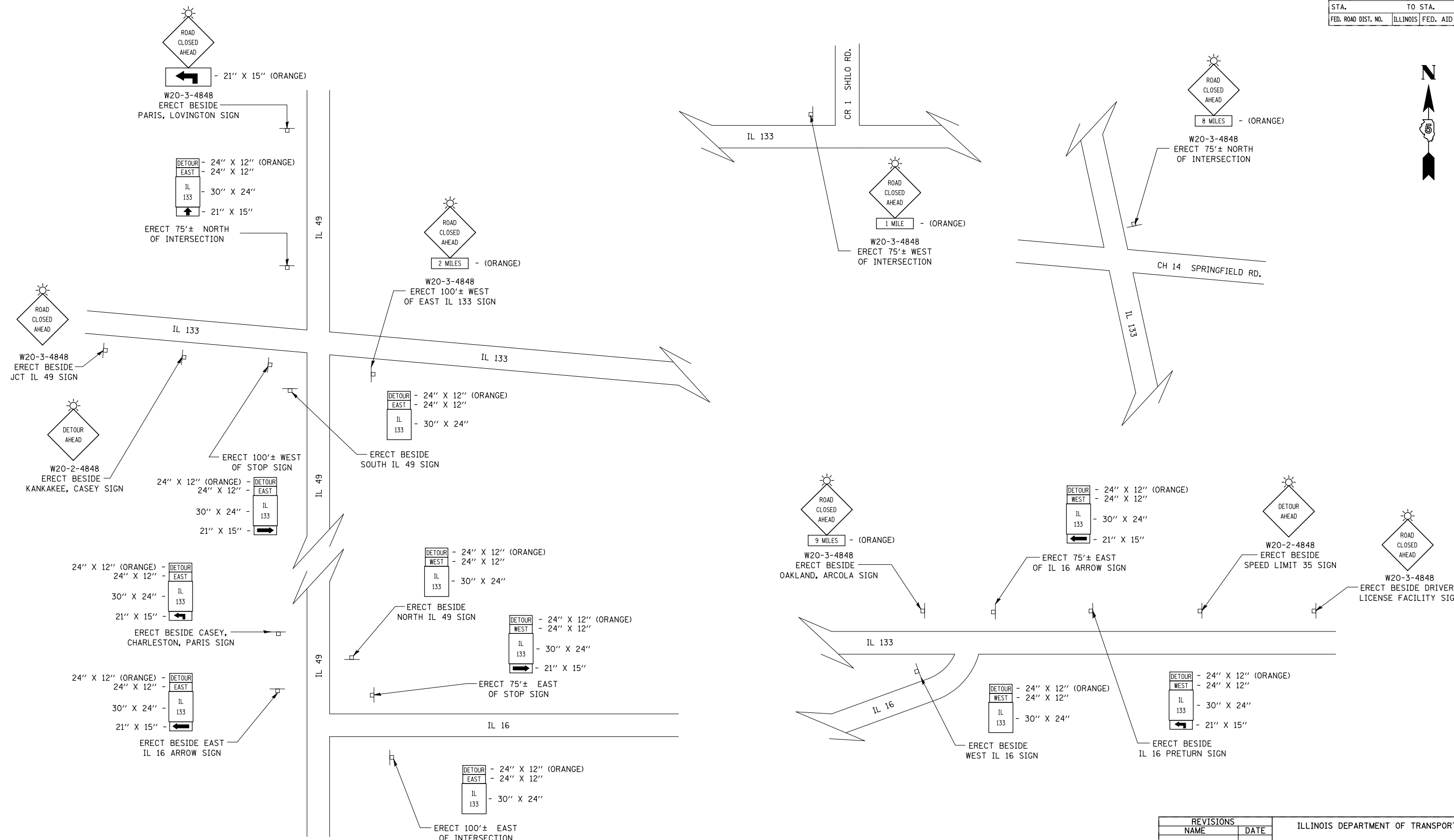


Note: All dimensions are in INCHES (millimeters) unless otherwise shown.

DATE	REVISIONS	NAME	ILLINOIS DEPARTMENT OF TRANSPORTATION
11/06	REPLACED DETAIL A-18.02	TJB	FIELD TILE SYSTEMS (TREATMENT OF EXISTING)
			DISTRICT 5 DETAIL NO. 61101011A

PLOT DATE = 12/14/2007
 FILE NAME = c:\projects\6983284 (b)\final plans 09_05_2007\dr-arings\detail.dgn
 PLOT SCALE = 42.3525' / IN.
 USER NAME = collierb

F.A.P. RTE.	SECTION	COUNTY	TOTAL SHEETS	SHEET NO.
749	(9BR)BR	EDGAR	31	18
STA.		TO STA.		
FED. ROAD DIST. NO.	ILLINOIS	FED. AID PROJECT		



NOTE

- COVER ANY CONFLICTING SIGNS

SYMBOLS

- ☀ FLASHING AMBER LIGHT (TYPE A)

REVISIONS	
NAME	DATE

ILLINOIS DEPARTMENT OF TRANSPORTATION

DETOUR SIGNING DETAILS

SCALE: VERT. / HORIZ.

DATE

DRAWN BY / CHECKED BY

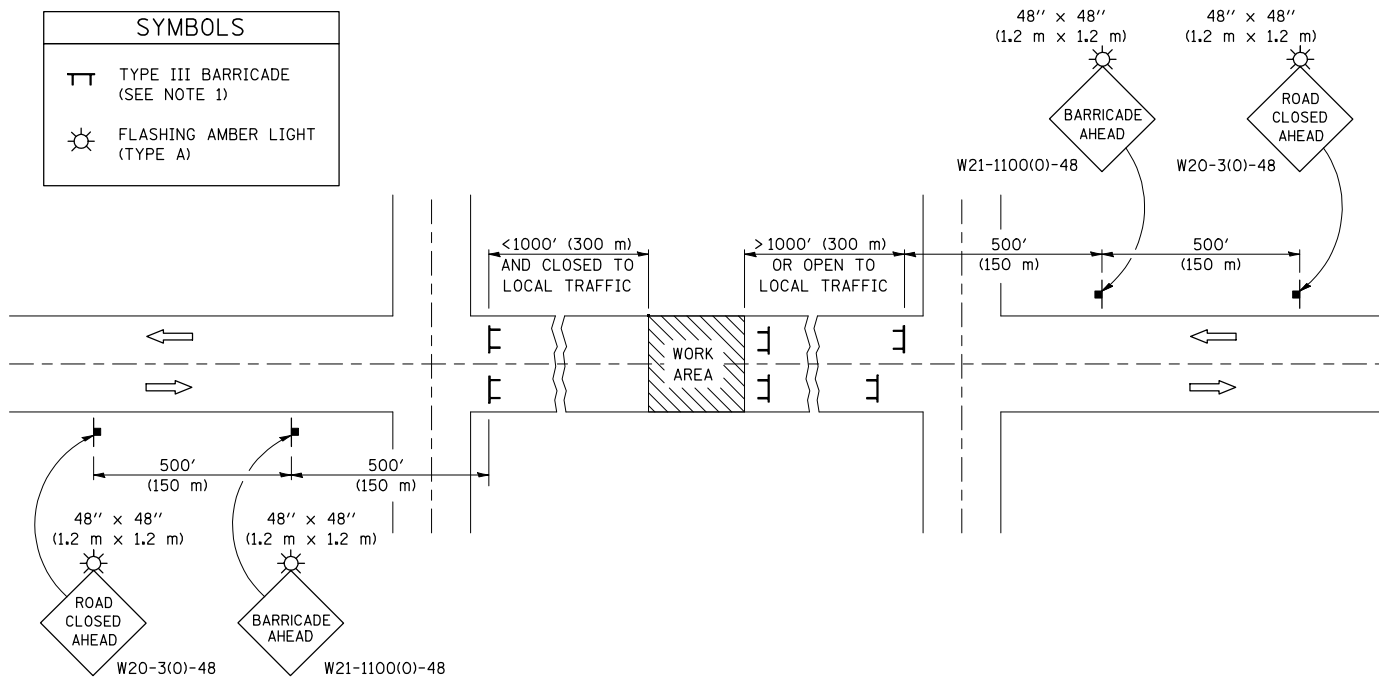
PLOT DATE = 8/29/2007
 FILE NAME = F:\B\439\11\Hickory Grove Ch Drawings\detour18.dgn
 PLOT SCALE = 42.3625' / IN.
 USER NAME = rcook

F.A.P. RTE.	SECTION	COUNTY	TOTAL SHEETS	SHEET NO.
749	(9BR)BR	EDGAR	31	19
STA.		TO STA.		
FED. ROAD DIST. NO.	ILLINOIS	FED. AID PROJECT		

ROAD CLOSURE

SIDEROAD / STREET CLOSURE

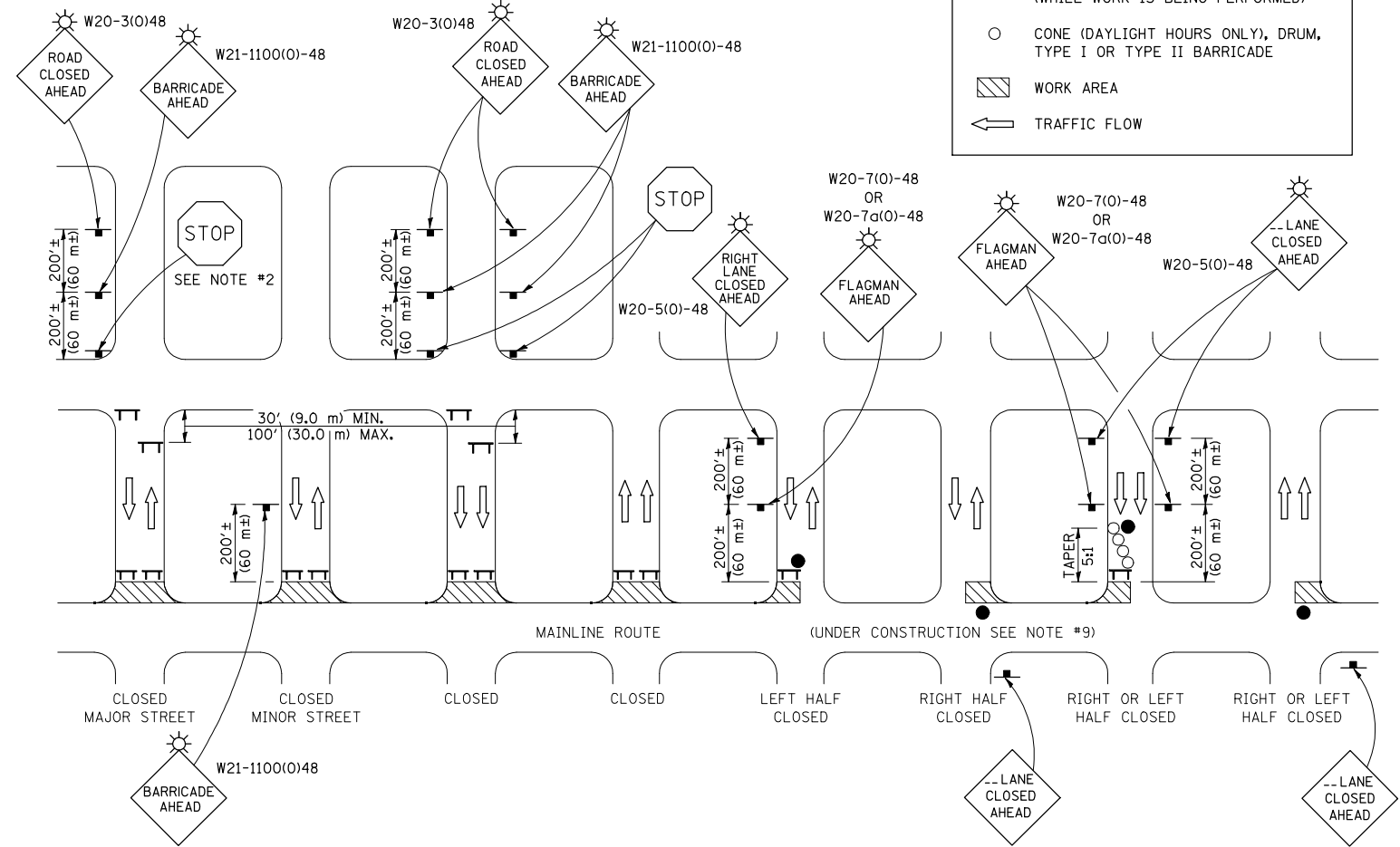
SYMBOLS	
	TYPE III BARRICADE (SEE NOTE 1)
	FLASHING AMBER LIGHT (TYPE A)



GENERAL NOTES

- TYPE III BARRICADES SHALL BE AS SHOWN ON STANDARD 702001 "TYPICAL APPLICATIONS OF TYPE III BARRICADES CLOSING A ROAD". EACH TYPE III BARRICADE SHALL HAVE TWO FLASHING AMBER LIGHTS MOUNTED ABOVE IT.
- IF THE ROAD IS OPEN TO LOCAL TRAFFIC OR EXCEEDS 1000' (300 m), ANOTHER SET OF TYPE III BARRICADES, EQUIPPED AS IN NOTE 1 ABOVE, SHALL BE PLACED AT EACH END OF THE WORK AREA.
- WHEN A STOP CONDITION EXISTS, NO SIGNS ARE REQUIRED IN ADVANCE OF THE "STOP" SIGN WHEN THE ROAD IS CLOSED WITHIN 100' (30 m) OF THE INTERSECTION.
- STANDARD 702001 SHALL APPLY FOR THE PLACEMENT & DESIGN OF TYPE III BARRICADES.
- IF A TYPE III BARRICADE WITH AN ATTACHED SIGN PANEL WHICH MEETS NCHRP 350 IS NOT AVAILABLE, THE SIGNS MAY BE MOUNTED ON AN NCHRP 350 TEMPORARY SIGN SUPPORT DIRECTLY IN FRONT OF THE BARRICADE.
- REFLECTORIZED STRIPING SHALL APPEAR ON BOTH SIDES OF THE TYPE III BARRICADES IF ROAD IS OPEN TO LOCAL TRAFFIC.
- ALL SIGNS SHALL BE POST MOUNTED IF THE CLOSURE TIME EXCEEDS FOUR DAYS.
- A MINIMUM OF TWO FLASHING LIGHTS SHALL BE USED AT NIGHT ON EACH APPROACH IN ADVANCE OF THE WORK AREA. FLASHING LIGHTS SHALL BE INSTALLED ABOVE THE FIRST TWO SIGNS IN THE SERIES.
- LONGITUDINAL DIMENSIONS MAY BE ADJUSTED SLIGHTLY TO FIT FIELD CONDITIONS.
- FORMS BT. 725 AND BT. 726 ARE REQUIRED.
- WHEN A SIDEROAD INTERSECTS THE HIGHWAY ON WHICH WORK IS BEING PERFORMED, ADDITIONAL TRAFFIC DEVICES SHALL BE ERECTED AND PROVIDED AS DIRECTED BY THE ENGINEER.
- AN ADDITIONAL SIGN MAY BE REQUIRED AT A MAJOR INTERSECTING ROAD IN ADVANCE OF THE CLOSURE. THE ADDITIONAL SIGN SHALL GIVE THE DISTANCE TO THE BARRICADE IN MILES OR FRACTIONS OF A MILE.

SYMBOLS	
	TYPE III BARRICADE (SEE NOTE)
	FLASHING LIGHT
	FLAGGER WITH TRAFFIC CONTROL SIGN (WHILE WORK IS BEING PERFORMED)
	CONE (DAYLIGHT HOURS ONLY), DRUM, TYPE I OR TYPE II BARRICADE
	WORK AREA
	TRAFFIC FLOW



GENERAL NOTES

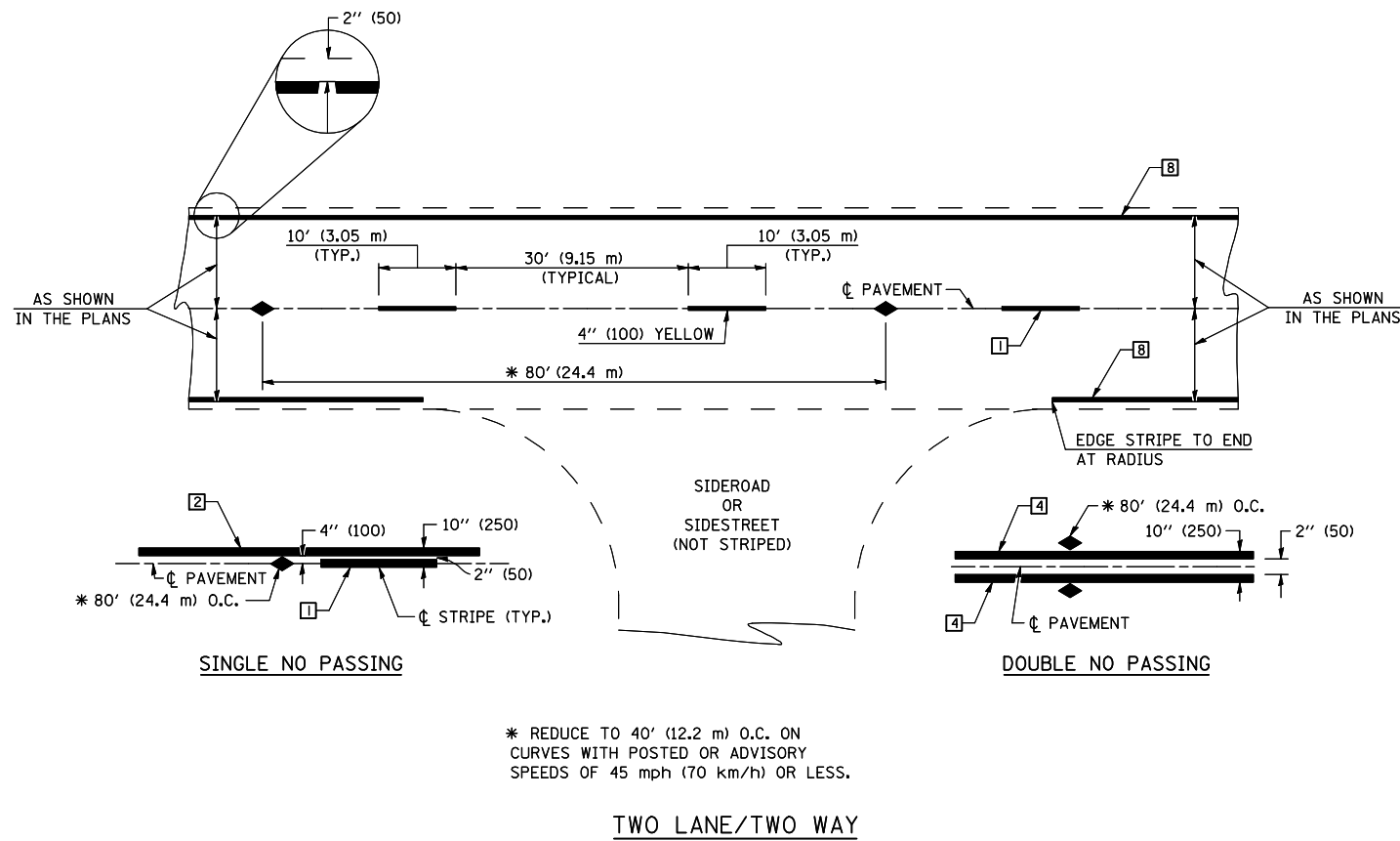
- TYPE III BARRICADES SHALL BE AS SHOWN ON "TYPICAL APPLICATIONS OF TYPE III BARRICADES CLOSING A ROAD". EACH TYPE III BARRICADE SHALL HAVE TWO FLASHING AMBER LIGHTS MOUNTED ABOVE IT.
- WHERE A STOP CONDITION EXISTS, AS SHOWN ABOVE, WARNING SIGNS MAY BE OMITTED IN ADVANCE OF THE "STOP" SIGN.
- STANDARD 702001 SHALL APPLY FOR THE PLACEMENT & MANUFACTURE OF TYPE III BARRICADES.
- ALL SIGNS SHALL BE POST MOUNTED IF THE CLOSURE TIME EXCEEDS FOUR DAYS.
- ONE FLASHING LIGHT IS REQUIRED ABOVE EACH ADVANCE WARNING SIGN DURING HOURS OF DARKNESS.
- LONGITUDINAL DIMENSIONS MAY BE ADJUSTED SLIGHTLY TO FIT FIELD CONDITIONS.
- FORMS BT 725 AND BT 726 ARE REQUIRED.
- THE MAINLINE ROUTE TEMPORARY TRAFFIC CONTROL SHALL BE IN ACCORDANCE WITH THE PLANS, SPECIAL PROVISIONS AND STANDARD SPECIFICATIONS.
- THIS WORK WILL NOT BE PAID FOR SEPARATELY BUT SHALL BE CONSIDERED INCLUDED IN THE VARIOUS PAY ITEMS INVOLVING THE RECONSTRUCTION OF ALL APPLICABLE SIDE STREETS AND NO ADDITIONAL COMPENSATION WILL BE ALLOWED.

REVISIONS	
NAME	DATE

ILLINOIS DEPARTMENT OF TRANSPORTATION
TRAFFIC CONTROL & PROTECTION DEVICES (ROAD & SIDEROAD/STREET CLOSURES)
 SCALE: VERT. / HORIZ. / DATE
 DRAWN BY / CHECKED BY

PLOT DATE = 8/29/2007
 FILE NAME = F:\R94399\11\Hickory Grove CA Drawings\detail.dgn
 PLOT SCALE = 42.3529' / IN.
 USER NAME = rcook

F.A.P. RTE.	SECTION	COUNTY	TOTAL SHEETS	SHEET NO.
749	(9BR)BR	EDGAR	31	20
STA.		TO STA.		
FED. ROAD DIST. NO.	ILLINOIS	FED. AID PROJECT		



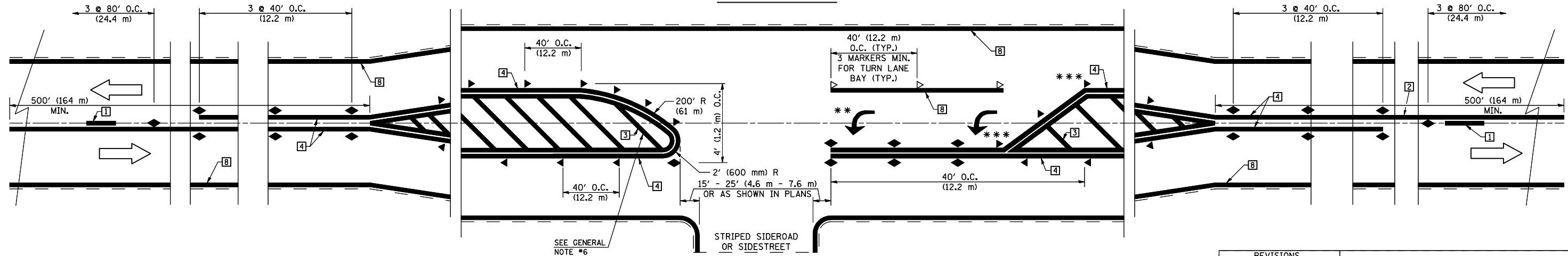
TYPICAL PAVEMENT MARKING LEGEND

- 1 4" (100) SKIP-DASH (YELLOW)
 - 2 4" (100) SOLID (YELLOW)
 - 3 12" (300) DIAGONAL (YELLOW)
 - 4 4" (100) DOUBLE YELLOW (NARROW)
 - 5 RESERVED
 - 6 RESERVED
 - 7 4" (100) SKIP-DASH (WHITE)
 - 8 4" (100) SOLID (WHITE)
 - 9 12" (300) DIAGONAL (WHITE)
 - 10 6" (150) SOLID (WHITE)
 - 11 24" (600) STOP BAR (WHITE)
 - 12 8" (200) SOLID (WHITE)
 - 13 4" (100) LANE LINE EXTENSIONS (WHITE)
 - 14 4" (100) PARKING WHITE
-

TYPICAL PAVEMENT MARKERS LEGEND

- ◆ TWO-WAY AMBER MARKER
- ▶ ONE-WAY AMBER MARKER
- ▷ ONE-WAY CRYSTAL MARKER

RURAL LEFT TURN



*** REDUCE SPACING IF NECESSARY TO ASSURE MARKERS AT CORNER POINTS.

** TURN ARROWS SHALL BE PLACED AS SHOWN ON SHEET #2.

REVISIONS	
NAME	DATE

ILLINOIS DEPARTMENT OF TRANSPORTATION

PAVEMENT MARKING DETAILS

SHEET 1 OF 4

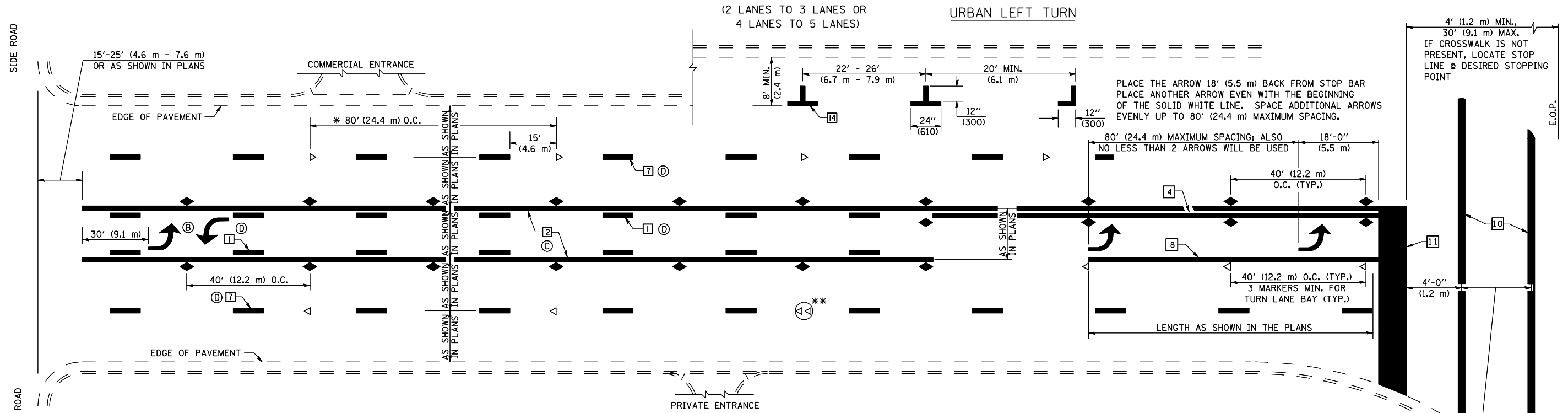
SCALE: VERT. / HORIZ.

DATE

DRAWN BY / CHECKED BY

PLOT DATE = 8/29/2007
 FILE NAME = P:\B\9439\11\Hickory Grove Ch.Dwg\mgs\detail.dgn
 PLOT SCALE = 42.352% / IN.
 USER NAME = rcook

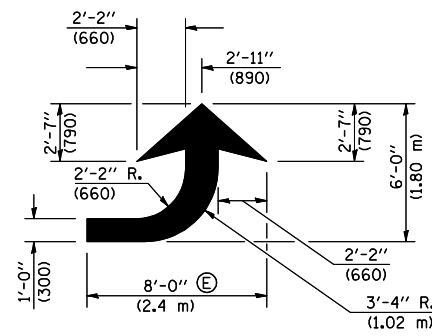
F.A.U. RTE.	SECTION	COUNTY	TOTAL SHEETS	SHEET NO.
749	(9BR)BR	EDGAR	31	21
STA.		TO STA.		
FED. ROAD DIST. NO.	ILLINOIS	FED. AID PROJECT		



* REDUCE TO 40 FEET (12.2 METERS) ON CENTER ON CURVES WHERE ADVISORY SPEEDS ARE 10 MPH (15 km/h) LOWER THAN POSTED SPEEDS.

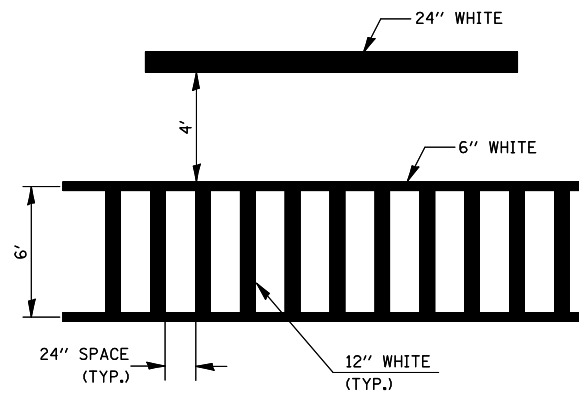
** DOUBLE LANE LINE MARKERS SHALL BE SPECIFIED AND SPACED AS SHOWN IN HIGHWAY STANDARD 781001 FOR MULTI-LANE DIVIDED AND UNDIVIDED HIGHWAYS.

BLOOMINGTON-NORMAL CITY LIMITS ONLY

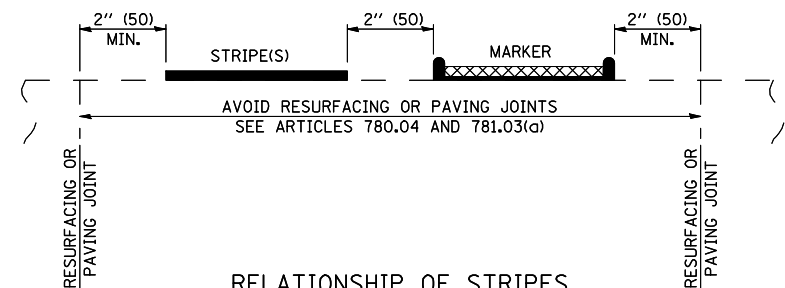


LEFT ARROW

REVERSE FOR RIGHT ARROW
AREA = 15.6 SQ. FT. (1.47 m²)
(WHITE)



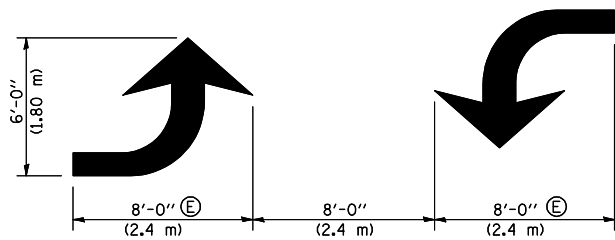
TYPICAL SPACING FOR
CROSSWALKS & STOP BARS



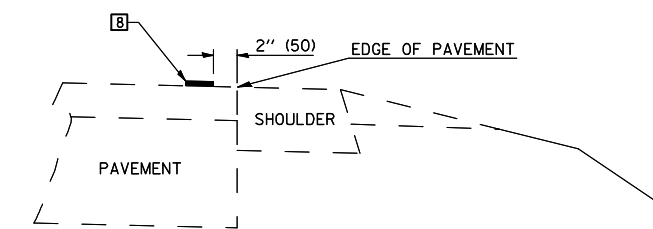
RELATIONSHIP OF STRIPES,
MARKERS AND JOINTS

NOTES:

- Ⓑ TURN ARROW PAIRS SHALL BE PLACED AT 250' (75 m) INTERVALS AND SHALL BE EVENLY SPACED BETWEEN BOTH ENDS OF THE BIDIRECTIONAL LEFT TURN LANE.
- Ⓒ THE SOLID YELLOW PAVEMENT MARKINGS [2] SHOULD GENERALLY START OR END NEAR THE RADIUS POINT OF EACH STREET RETURN EXCEPT WHERE ONE OR BOTH ENDS WOULD INCLUDE STOP BARS.
- Ⓓ THE SKIP-DASH PAVEMENT MARKINGS [1] OR [7] SHOULD BE CENTERED BETWEEN BOTH ENDS OF EACH CITY BLOCK AND SHALL BE PLACED SO THEY LINE UP ACROSS FROM EACH OTHER. SEE EXAMPLE ON SHEET 2 OF 3.
- Ⓔ TURN ARROW SIZE DEPENDS ON THE LOCATION. RURAL LOCATION - LARGE ARROW SIZE. URBAN LOCATION - SMALL ARROW SIZE



TYPICAL DOUBLE
TURN ARROWS (WHITE)



RELATIONSHIP OF EDGE LINE TO EDGE OF PAVEMENT
(SAFETY SHOULDER OR PAVED SURFACE)
SEE ARTICLE 780.04

REVISIONS	
NAME	DATE

ILLINOIS DEPARTMENT OF TRANSPORTATION

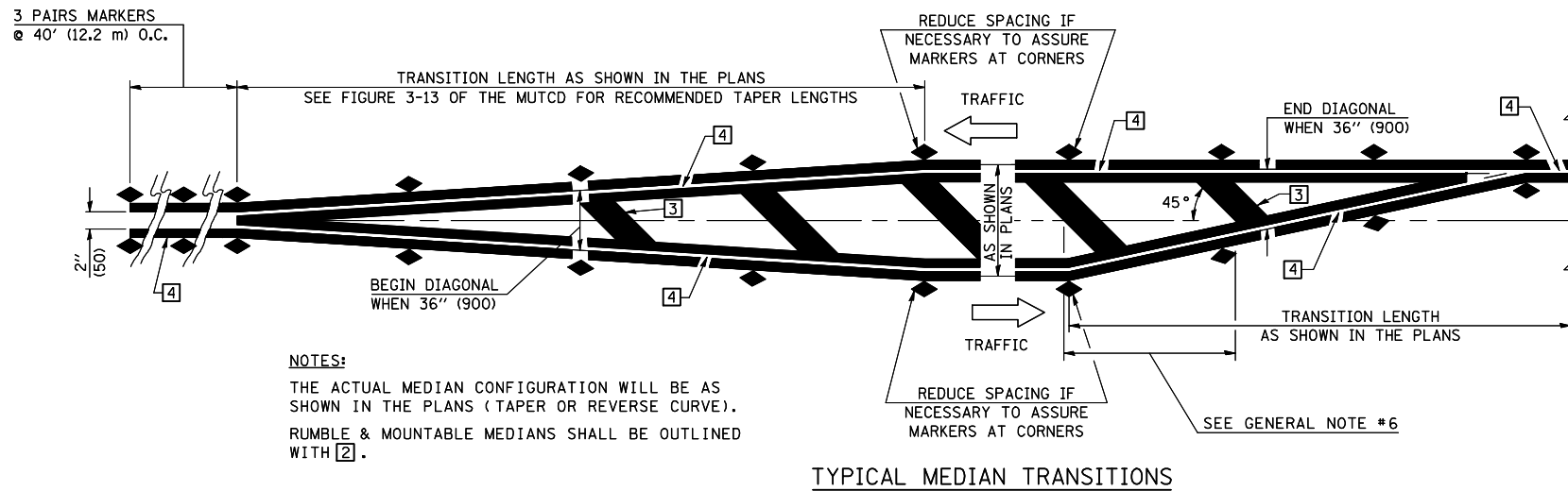
PAVEMENT MARKING DETAILS
SHEET 2 OF 4

SCALE: VERT.
HORIZ.
DATE

DRAWN BY
CHECKED BY

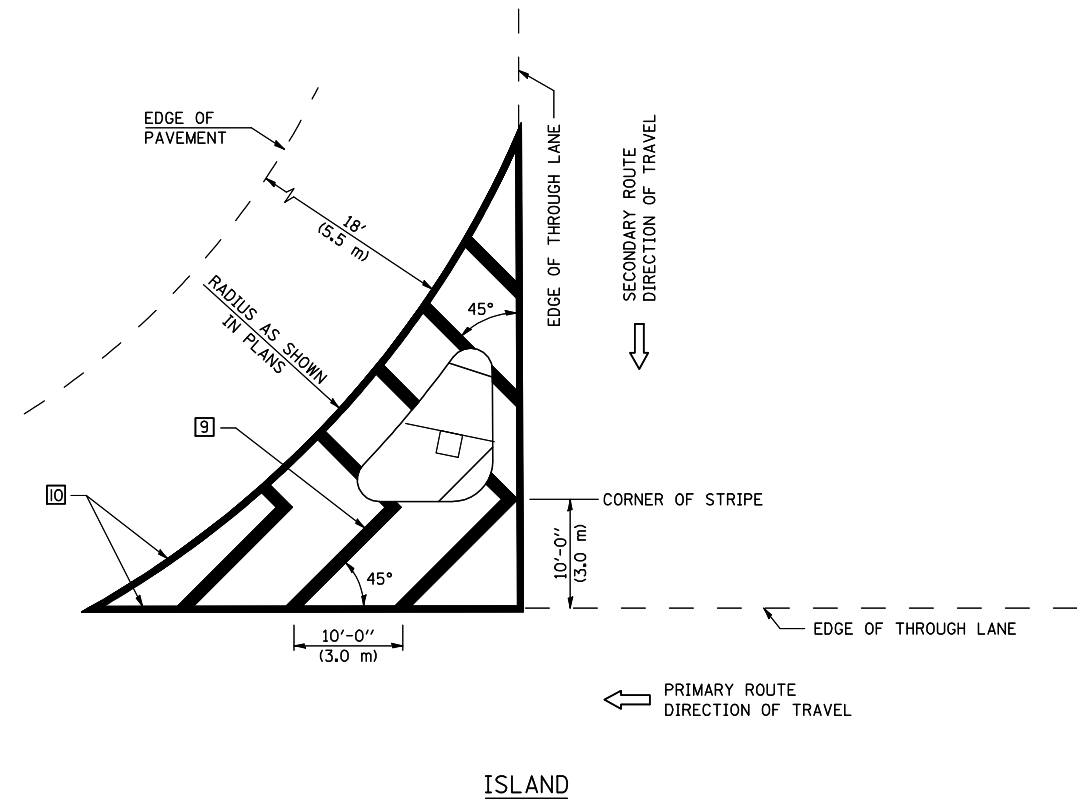
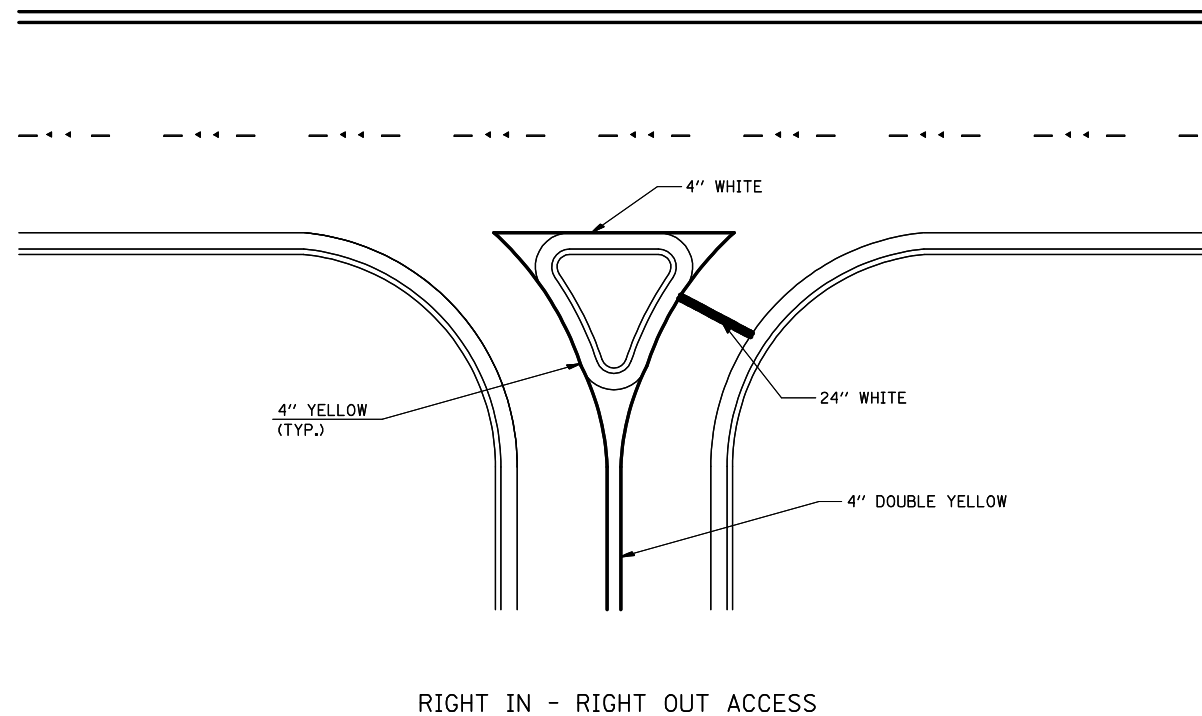
PLOT DATE = 8/29/2007
FILE NAME = F:\A\94339\11\Hickory Grove CA Drawings\detail.dgn
PLOT SCALE = 42.352% / IN.
USER NAME = rcook

F.A.P. RTE.	SECTION	COUNTY	TOTAL SHEETS	SHEET NO.
749	(9BR)BR	EDGAR	31	22
STA.		TO STA.		
FED. ROAD DIST. NO.	ILLINOIS	FED. AID PROJECT		



GENERAL NOTES

1. WHEN MEDIANS ARE PRESENT, PAVEMENT MARKINGS ARE TO BE PLACED ADJACENT TO MEDIANS.
2. SOME OF THE INFORMATION INCLUDED WITH THIS DETAIL MAY NOT BE APPLICABLE TO THIS IMPROVEMENT.
3. PAVEMENT MARKINGS ARE TO BE EXTENDED THROUGH OMISSIONS WHEN APPLICABLE.
4. A STRIPING KEY IS AVAILABLE ELSEWHERE AND SHALL BE SHOWN WHERE THE QUANTITIES ARE LISTED.
5. FINAL PAVEMENT MARKINGS SHALL BE IN PLACE PRIOR TO PLACING ANY RAISED REFLECTIVE PAVEMENT MARKERS.
6. THE FOLLOWING CRITERIA SHALL BE USED FOR SELECTING THE DIAGONAL PAVEMENT MARKING SPACING,
< 30 MPH USE 15' (< 50 km/h USE 4.5 m)
30-45 MPH USE 20' (50-75 km/h USE 6.0 m)
> 45 MPH USE 30' (> 75 km/h USE 9.0 m)



REVISIONS	
NAME	DATE

ILLINOIS DEPARTMENT OF TRANSPORTATION

PAVEMENT MARKING DETAILS
SHEET 3 OF 4

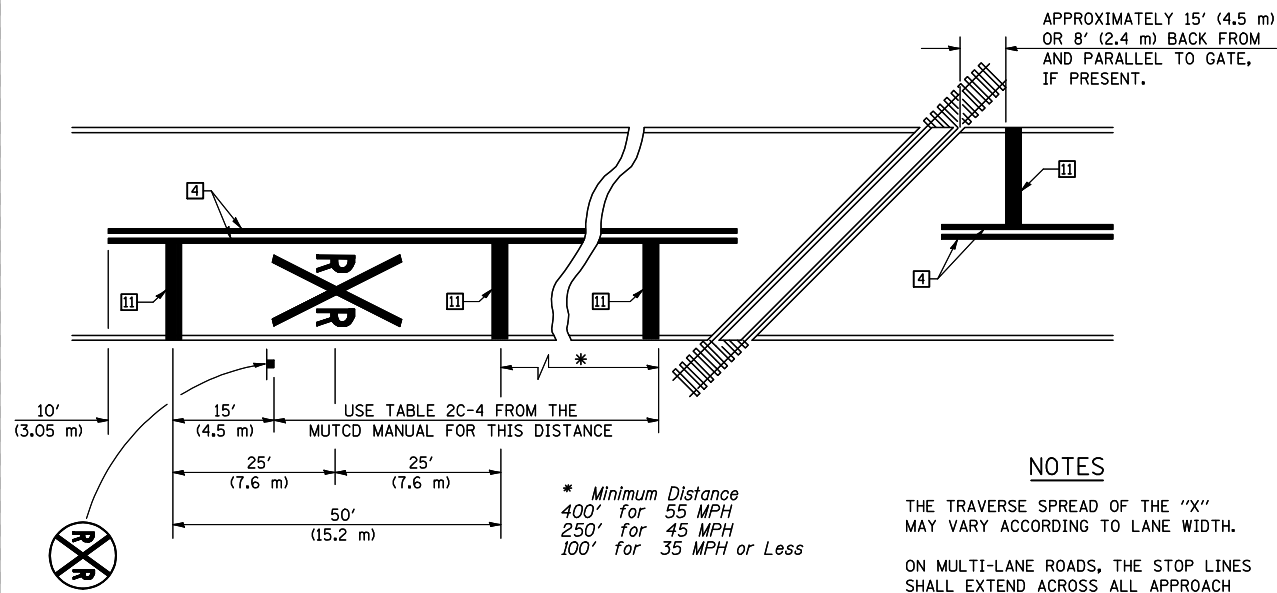
SCALE: VERT. / HORIZ.
DATE / DRAWN BY / CHECKED BY

PLOT DATE = 8/29/2007
FILE NAME = F:\834539\11\Hickory Grove Ch. Drawings\detail.dgn
PLOT SCALE = 42.352% / IN.
USER NAME = rcook

F.A.P. RTE.	SECTION	COUNTY	TOTAL SHEETS	SHEET NO.
749	(9BR)BR	EDGAR	31	23
STA.		TO STA.		
FED. ROAD DIST. NO.	ILLINOIS	FED. AID PROJECT		

RAILROAD CROSSING WITH INTERCONNECT ONLY

RAILROAD CROSSING WITH INTERCONNECT AND PRE-SIGNALS



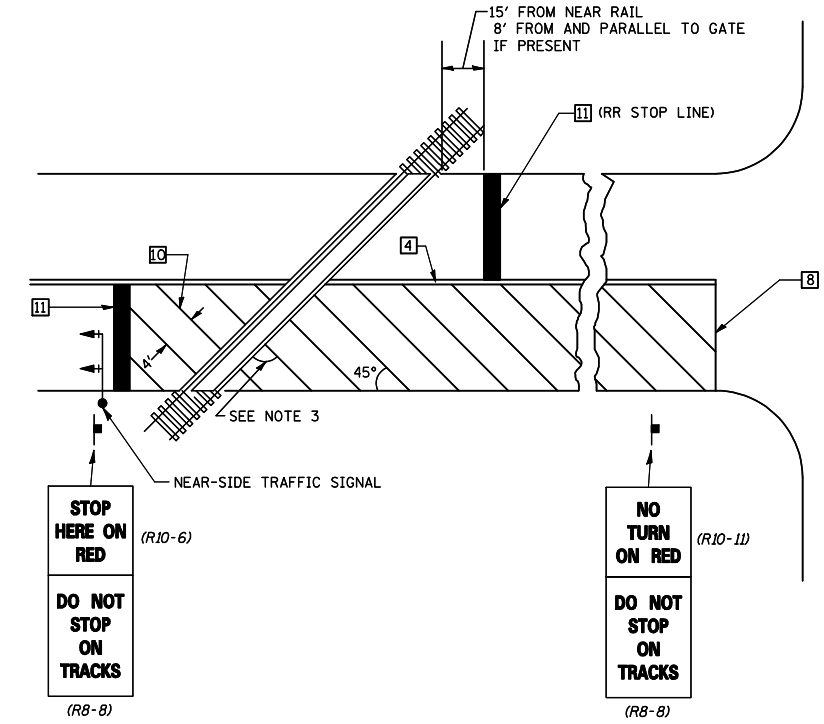
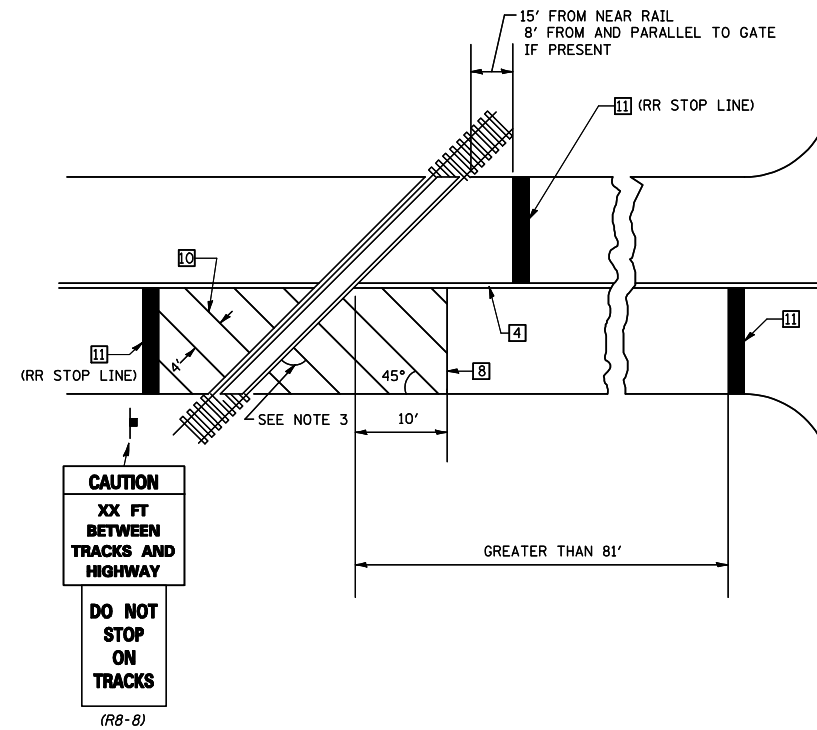
PAVEMENT MARKINGS AT RAILROAD-HIGHWAY GRADE CROSSING

NOTES

THE TRAVERSE SPREAD OF THE "X" MAY VARY ACCORDING TO LANE WIDTH.

ON MULTI-LANE ROADS, THE STOP LINES SHALL EXTEND ACROSS ALL APPROACH LANES AND SEPARATE RXR SYMBOLS SHALL BE PLACED ADJACENT TO EACH OTHER IN EACH LANE.

WHEN THE PAVEMENT MARKING SYMBOL IS USED, A PORTION OF THE SYMBOL SHOULD BE LOCATED DIRECTLY ADJACENT TO THE ADVANCE WARNING SIGN (W10-1) AS PLACED BY TABLE II-1, CONDITION B OF THE MUTCD.



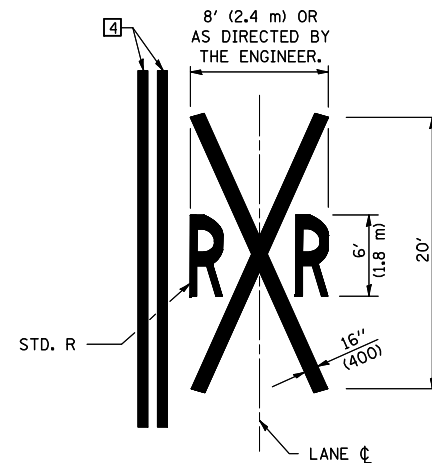
SUPPLEMENTAL PAVEMENT MARKING TREATMENT FOR RAILROAD-HIGHWAY GRADE CROSSING

NOTES

SUPPLEMENTAL PAVEMENT MARKINGS TO BE INSTALLED ONLY ON APPROACHES TO INTERSECTIONS CONTROLLED BY TRAFFIC SIGNALS WHICH ARE INTERCONNECTED WITH THE RAILROAD WARNING SIGNALS.

EXTEND PAVEMENT MARKINGS TO THE INTERSECTION ONLY WHERE NEAR-SIDE TRAFFIC SIGNALS ARE USED.

WHERE THE ANGLE BETWEEN THE DIAGONAL PAVEMENT MARKINGS AND THE TRACK WOULD BE LESS THAN 20°, THE PAVEMENT MARKINGS SHOULD BE PLACED IN THE OPPOSITE DIRECTION FROM THAT SHOWN.



REVISIONS	
NAME	DATE

ILLINOIS DEPARTMENT OF TRANSPORTATION

PAVEMENT MARKING DETAILS

SHEET 4 OF 4

SCALE: VERT. / HORIZ. / DATE

DRAWN BY / CHECKED BY

PLOT DATE = 8/29/2007
FILE NAME = F:\R94339\11\Hickory Grove Ch Drawings\detail.dgn
PLOT SCALE = 42.352% / IN.
USER NAME = rcook

F.A.P. RTE.	SECTION	COUNTY	TOTAL SHEETS	SHEET NO.
749	(9BR)BR	EDGAR	31	27
STA. 159+00.00		TO STA. 159+00.00		
FED. ROAD DIST. NO.		ILLINOIS FED. AID PROJECT		

BY	DATE

NO.	AREAS CHECKED

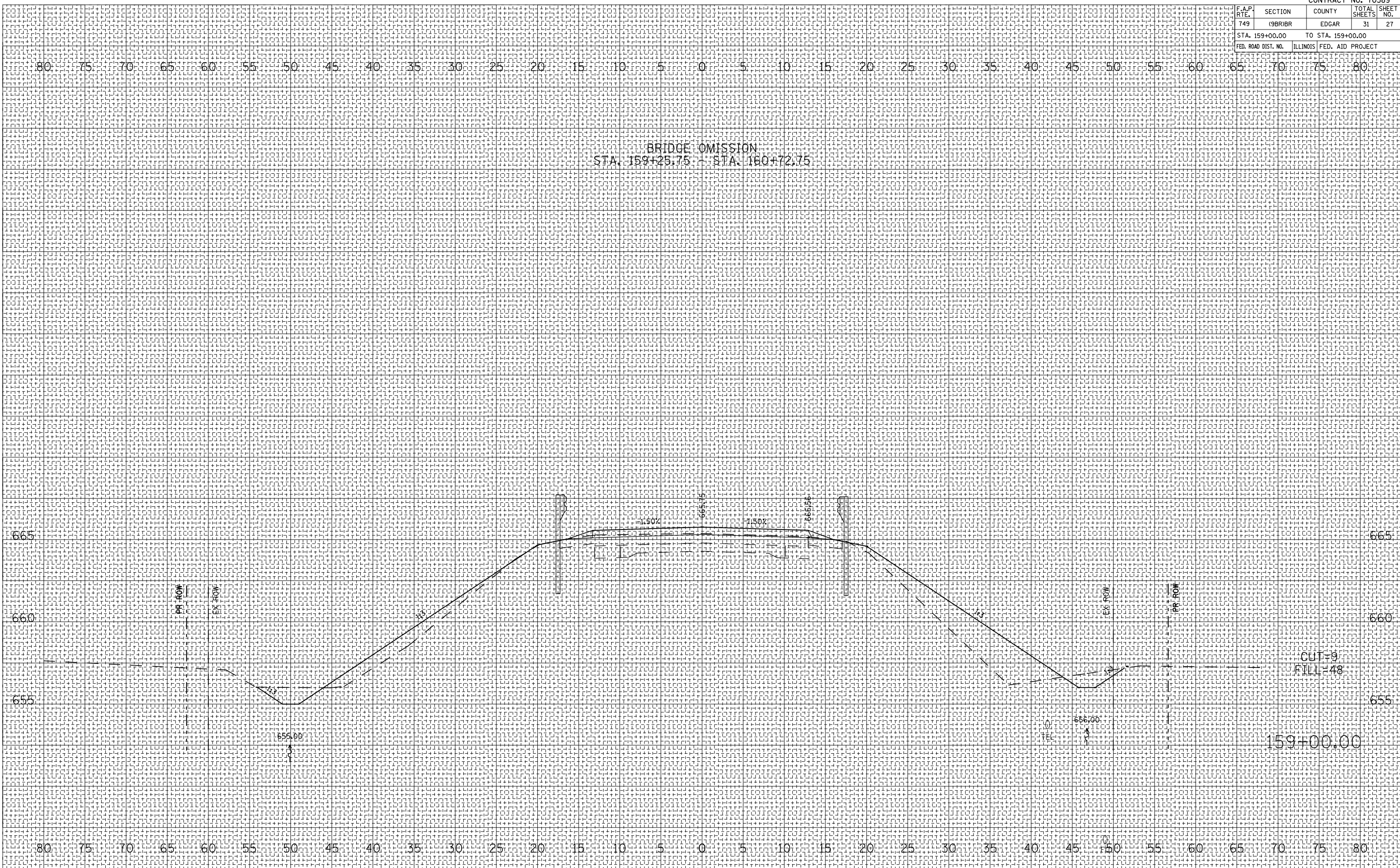
NO.	AREAS CHECKED

BY	DATE

NO.	AREAS CHECKED

NO.	AREAS CHECKED

PLOT DATE = 9/25/2007
 FILE NAME = P:\14342001\Highway Grov CA\DWG\9BR\9BR.dgn
 PLOT SCALE = 1/8"=1'-0"
 USER NAME = rcook



BRIDGE OMISSION
 STA. 159+25.75 - STA. 160+72.75

CUT=9
 FILL=48

159+00.00

F.A.P. RTE.	SECTION	COUNTY	TOTAL SHEETS	SHEET NO.
749	(9BR)BR	EDGAR	31	28
STA. 160+00.00		TO STA. 161+00.00		
FED. ROAD DIST. NO.		ILLINOIS FED. AID PROJECT		

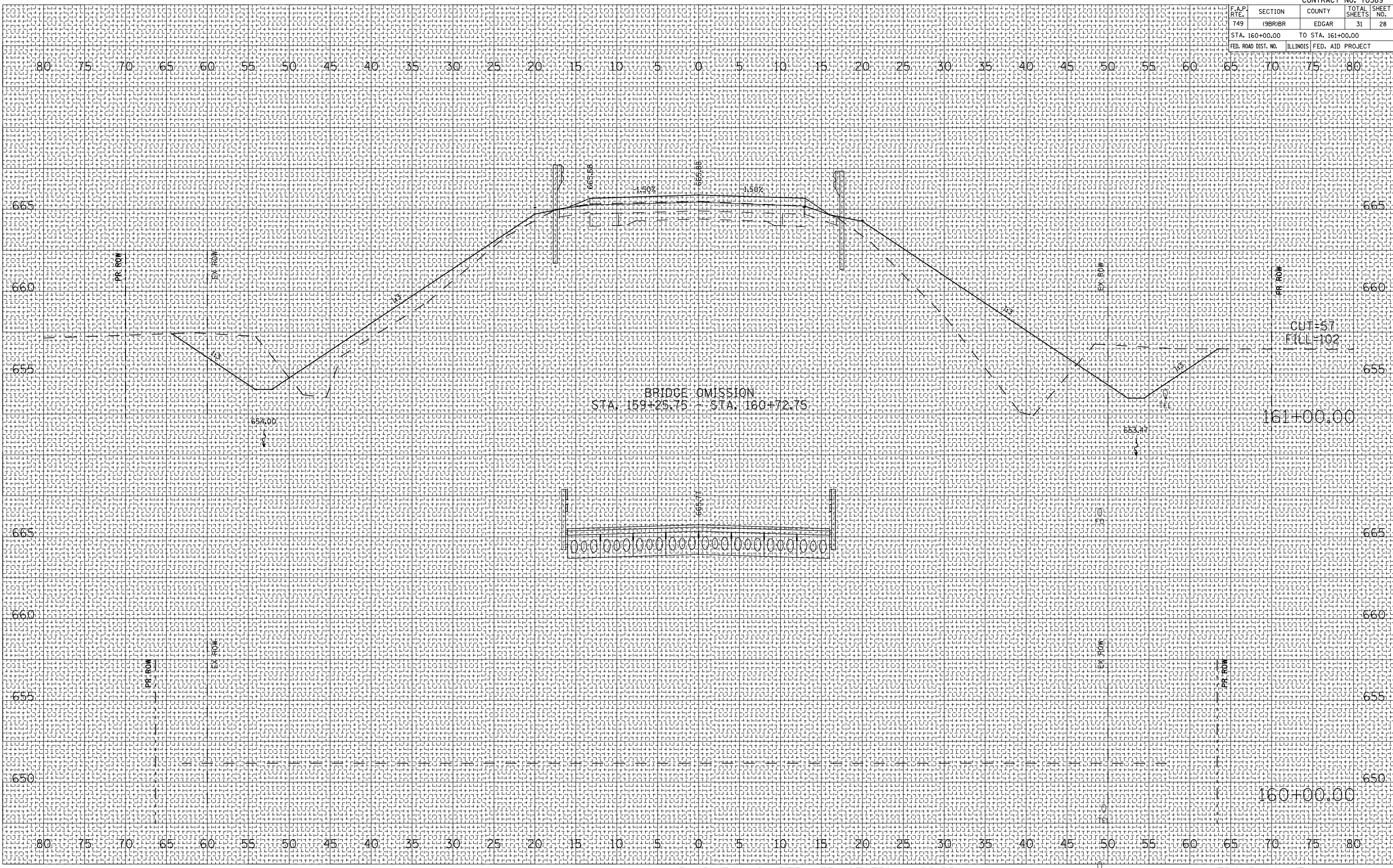
BY	DATE

FINAL SURVEY	SURVEYED
NOTE BOOK	PLOTTED
NO.	AREAS CHECKED

BY	DATE

ORIGINAL SURVEY	SURVEYED
NO.	PLOTTED
	AREAS CHECKED

PLOT DATE = 9/25/2007
 FILE NAME = P:\160000\160000\160000.dgn
 PLOT SCALE = 1/8"=1'-0"
 USER NAME = rcook



F.A.P. RTE.	SECTION	COUNTY	TOTAL SHEETS	SHEET NO.
749	(9BR)BR	EDGAR	31	29
STA. 161+50.00		TO STA. 162+00.00		
FED. ROAD DIST. NO.		ILLINOIS FED. AID PROJECT		

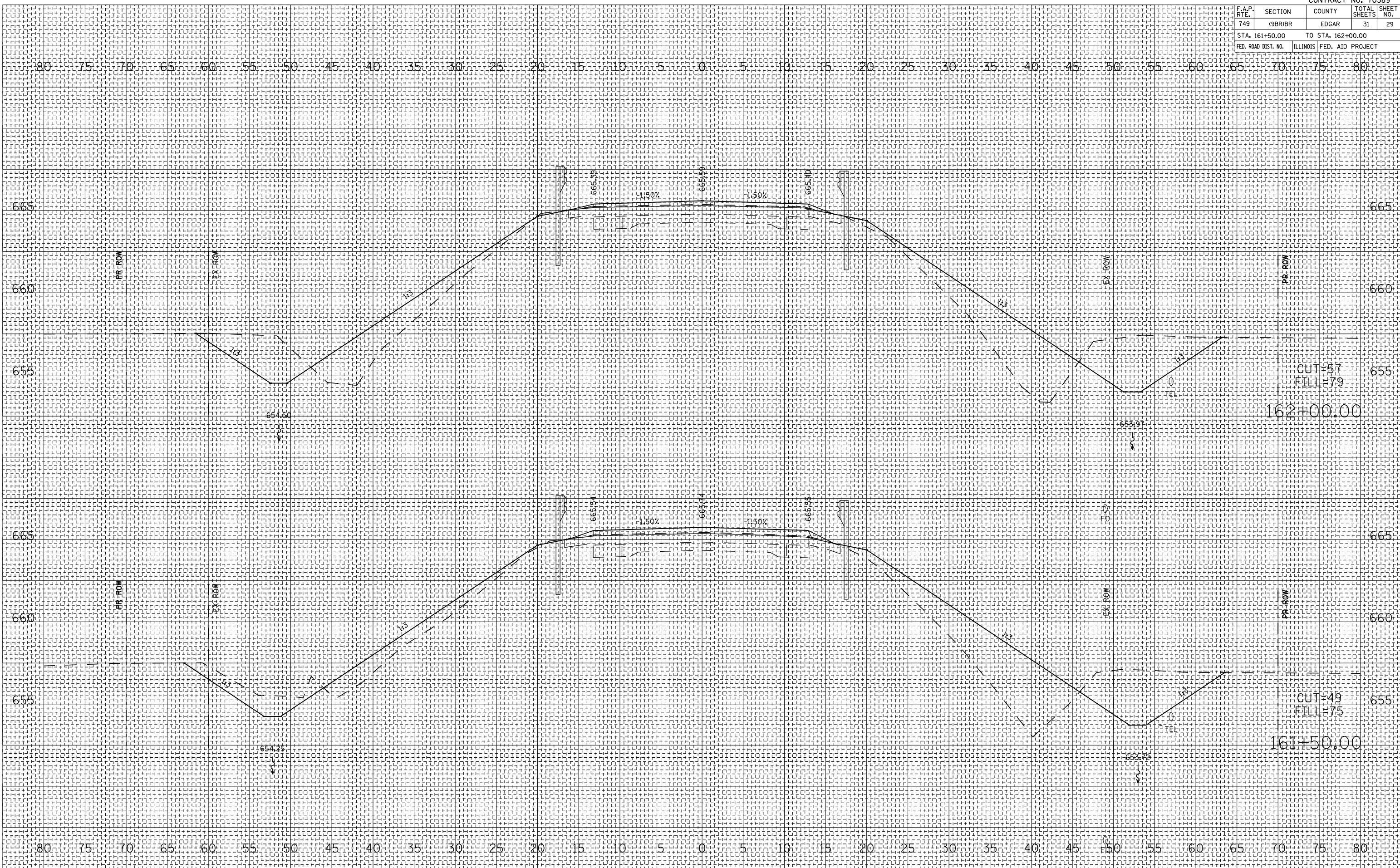
BY	DATE

NO.	AREAS CHECKED

BY	DATE

NO.	AREAS CHECKED

PLOT DATE = 8/25/2007
 FILE NAME = P:\1614200\1614200\History Grove CA\DWG\9BR\9BR.dgn
 PLOT SCALE = 1/8"=1'-0"
 USER NAME = rcook



F.A.P. RTE.	SECTION	COUNTY	TOTAL SHEETS	SHEET NO.
749	(9BR)BR	EDGAR	31	31
STA. 163+50.00		TO STA. 164+00.00		
FED. ROAD DIST. NO.	ILLINOIS	FED. AID PROJECT		

BY	DATE

NO.	AREAS CHECKED

NO.	AREAS CHECKED

BY	DATE

NO.	AREAS CHECKED

NO.	AREAS CHECKED

PLOT DATE = 9/25/2007
 FILE NAME = P:\163400\163400\163400.dgn
 PLOT SCALE = 1/8"=1'-0"
 USER NAME = rcook

