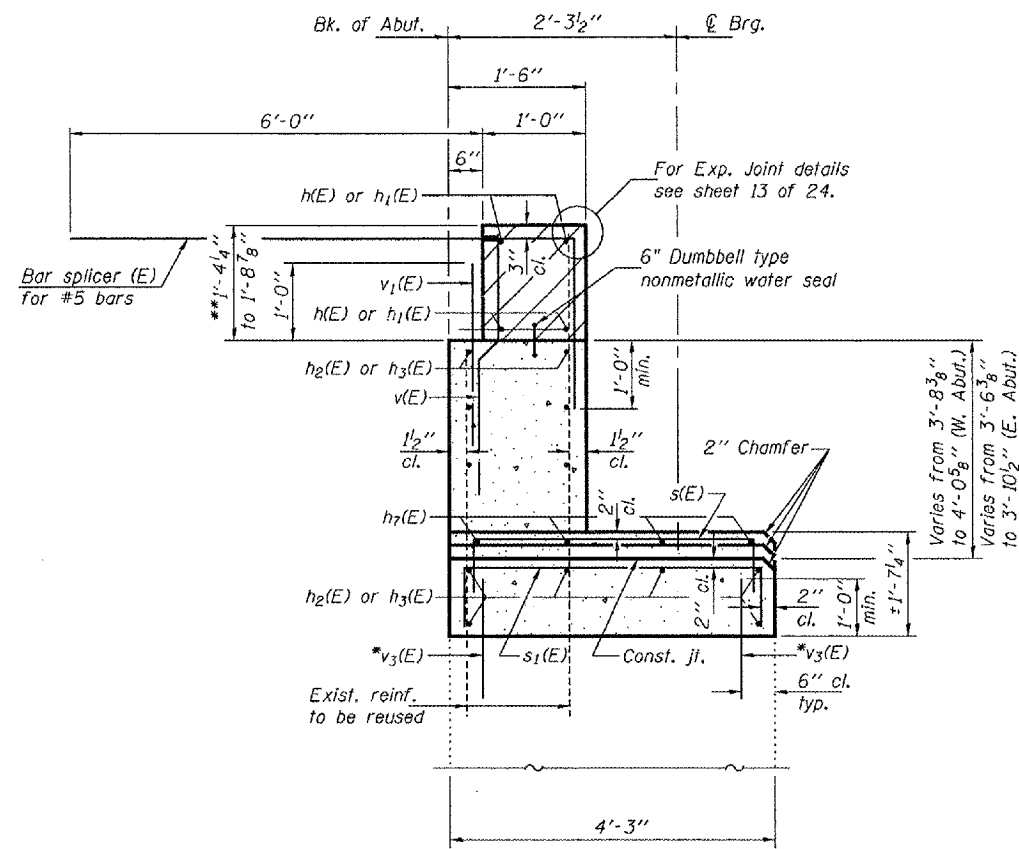


STATE OF ILLINOIS
DEPARTMENT OF TRANSPORTATION

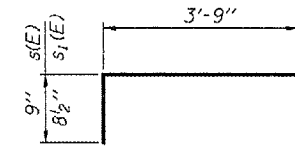
ROUTE NO.	SECTION	COUNTY	TOTAL SHEETS	SHEET	SHEET NO. 21
FAI 74	(57-22) BR-3	MCLEAN	42	32	24 SHEETS
FED. ROAD DIST. NO. 7		ILLINOIS	FED. AID PROJECT		

Contract #70672

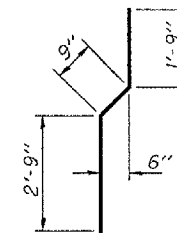


SEC. THRU ABUT.

* Epoxy grout #4 v₃(E) bars in 9" min. drilled holes according to Section 584 of the Standard Specifications.
** Prior to Grinding



BARS s(E) & s₁(E)



BAR v(E)

TWO ABUTMENTS
BILL OF MATERIAL

Bar	No.	Size	Length	Shape
h(E)	8	#6	19'-4"	—
h ₁ (E)	8	#6	23'-4"	—
h ₂ (E)	28	#5	19'-3"	—
h ₃ (E)	28	#5	23'-3"	—
h ₇ (E)	8	#5	4'-11"	—
s(E)	12	#4	5'-3"	□
s ₁ (E)	88	#4	5'-2"	□
v(E)	88	#4	5'-3"	—
v ₁ (E)	88	#5	3'-6"	—
v ₃ (E)	168	#4	1'-10"	—
v ₄ (E)	8	#5	4'-9"	—
Structure Excavation		Cu. Yd.	82.4	
Concrete Structures		Cu. Yd.	30.1	
Reinforcement Bars, Epoxy Coated		Pound	3020	
Concrete Sealer		Sq. Ft.	806	

For details of bar splicers, see sheet 24 of 24.

DESIGNED	DPN
CHECKED	SMR
DRAWN	h.f. duong
CHECKED	DPN/SMR

Jan. 31, 2008
EXAMINED *Thomas J. Damagala*
PASSED *Rafael G. Anderson*
ENGINEER OF BRIDGES AND STRUCTURES

ABUTMENT DETAILS
F.A.I. RT. 74 - SEC. (57-22)BR-3
MCLEAN COUNTY
STATION 1039+00
STRUCTURE NO. 057-0125 (E.B.)

A- Added sheet 2-13-08