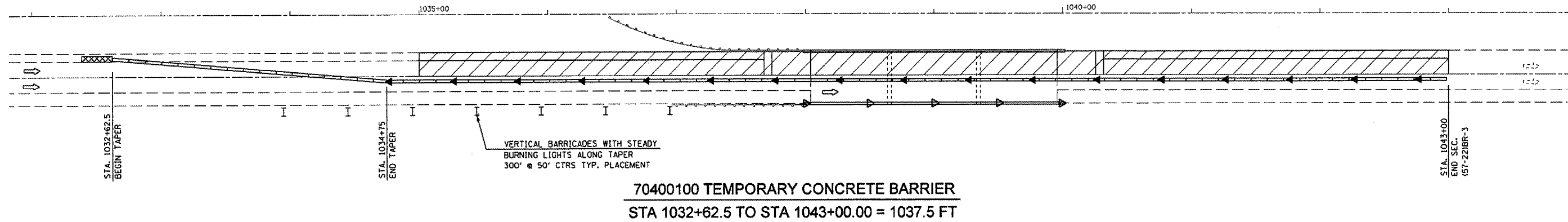
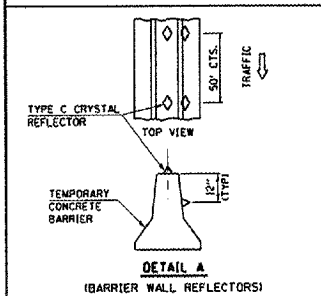
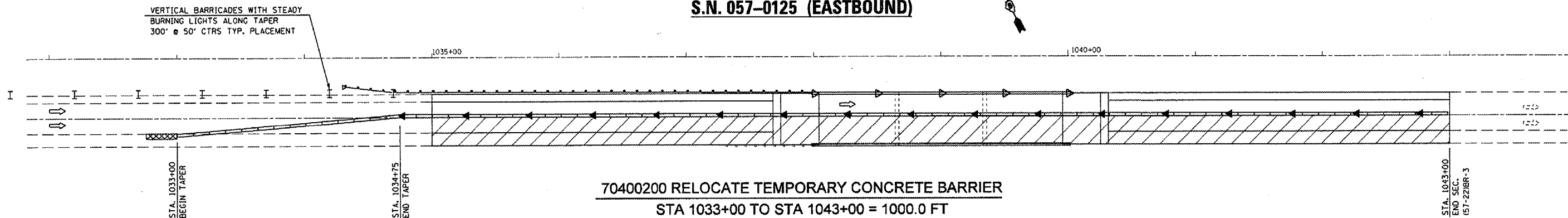


STAGE I CONSTRUCTION
S.N. 057-0125 (EASTBOUND)



STAGE II CONSTRUCTION
S.N. 057-0125 (EASTBOUND)



SYMBOLS	
◀	AMBER MONODIRECTIONAL REFLECTOR 50' CTS
▷	CRYSTAL MONODIRECTIONAL REFLECTOR 50' CTS
▬	TEMPORARY CONCRETE BARRIER
I	VERTICAL BARRICADES 50' CTS
⊠	IMPACT ATTENUATOR

PLAN NOTES:

ALL STAGING DETAILS SET UP IN ACCORDANCE WITH TRAFFIC CONTROL AND PROTECTION 701402.

PRIOR TO BARRIER PLACEMENT TRAFFIC CONTROL SHALL BE SET UP IN ACCORDANCE WITH STANDARD 701401.

TRAFFIC CONTROL DETAILS NOT SHOWN ARE TO CONFORM WITH STANDARD 701400 AND 701402.

MESSAGE BOARD SHALL BE PLACED TWO WEEKS PRIOR TO CONSTRUCTION AND MAY BE ADJUSTED TO MEET FIELD CONDITIONS.

RESIDENT ENGINEER AND TRAFFIC CONTROL SUPERVISOR SHALL PROVIDE APPROPRIATE MESSAGE FOR CMS.

RAISED REFLECTIVE PAVEMENT MARKERS AFFECTED BY THE PROPOSED CONSTRUCTION SHALL BE REPLACED. THIS COST SHALL BE INCIDENTAL TO THE VARIOUS TRAFFIC CONTROL PAY ITEMS.

REFLECTORS FOR BARRIER WALL, BRIDGE RAIL AND GUARDRAIL SHALL BE INCLUDED IN THE COST FOR THE APPLICABLE TRAFFIC CONTROL PAY ITEMS.

PLACE VERTICAL BARRICADES WITH STEADY BURNING LIGHTS AT 50 FOOT CENTERS, 300 FEET PRIOR TO PINCH POINTS CAUSED BY EXISTING GUARDRAIL. THIS COST WILL BE INCIDENTAL TO STANDARD 701402

REFLECTORIZED TEMPORARY MARKING TAPE SHALL BE PLACED THROUGHOUT THE TAPER AND ALONGSIDE THE WORK AREA. THE EDGE LINE SHALL BE YELLOW FOR LEFT LANE CLOSURES. COST FOR THE PLACEMENT AND REMOVAL SHALL BE INCLUDED IN COST FOR APPLICABLE TRAFFIC CONTROL PAY ITEM.

FILE NAME = c:\projects\4565287 (v8)\70672.stage.dgn	USER NAME = eolterbw	DESIGNED -	REVISED -
		DRAWN -	REVISED -
		CHECKED -	REVISED -
		DATE -	REVISED -

STATE OF ILLINOIS
DEPARTMENT OF TRANSPORTATION

I-74 OVER KICKAPOO CREEK - STAGE CONSTRUCTION DETAIL

SCALE: SHEET NO. OF SHEETS STA. TO STA.

F.A.I. RTE. 74	SECTION 157-221BR-3	COUNTY MCLEAN	TOTAL SHEETS 140
FED. ROAD DIST. NO. ILLINOIS FED. AID PROJECT			CONTRACT NO. 70672

A- Revised 2-12-09