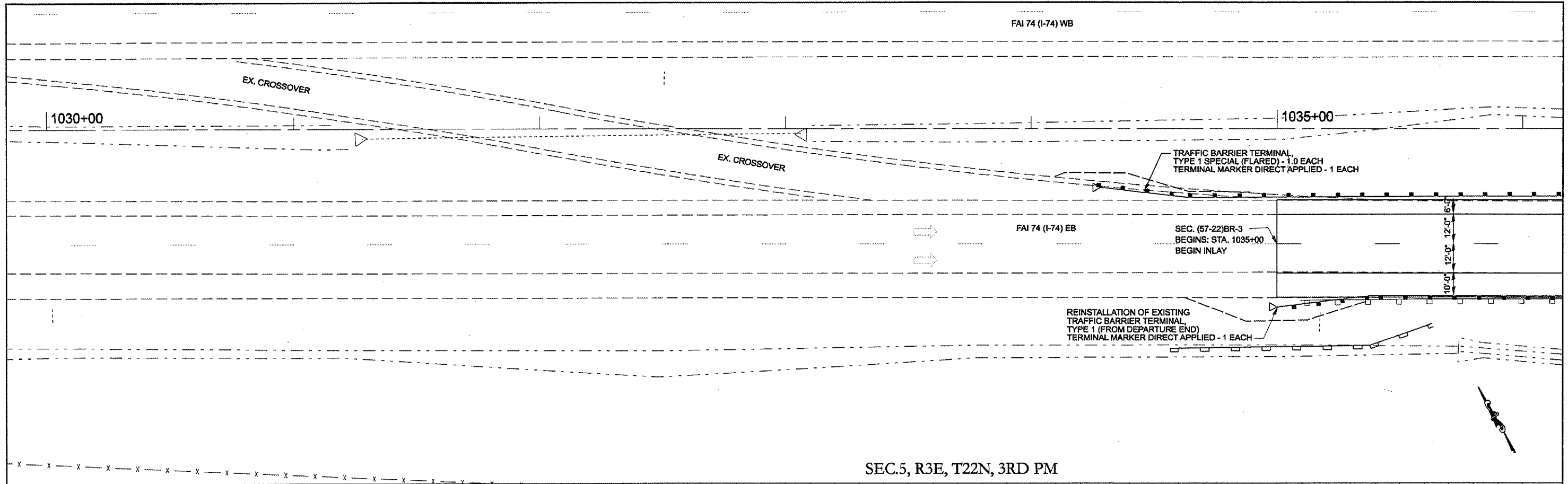
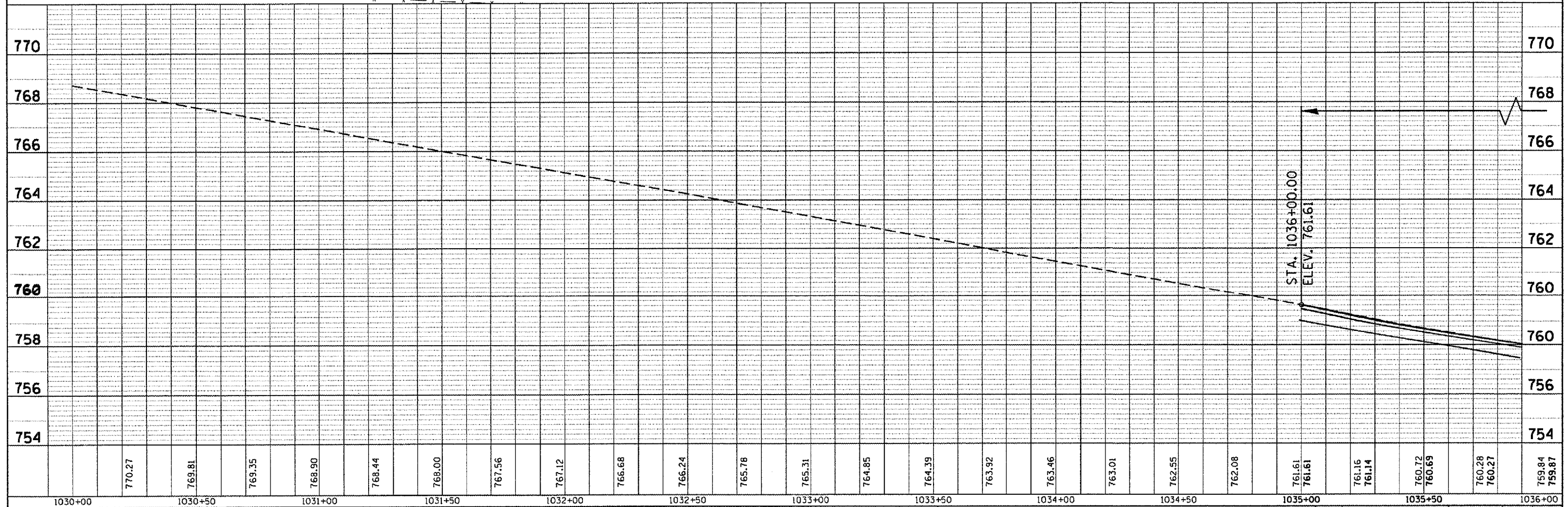


PLAN  
 DESIGNED BY  
 CHECKED BY  
 DATE  
 PLOTTED BY  
 ALIGNED CHECKED  
 NOTE BOOK NO.  
 FILE NAME

PROFILE  
 DESIGNED BY  
 CHECKED BY  
 DATE  
 PLOTTED BY  
 GRADES CHECKED  
 NOTE BOOK NO.  
 SIGNATURE



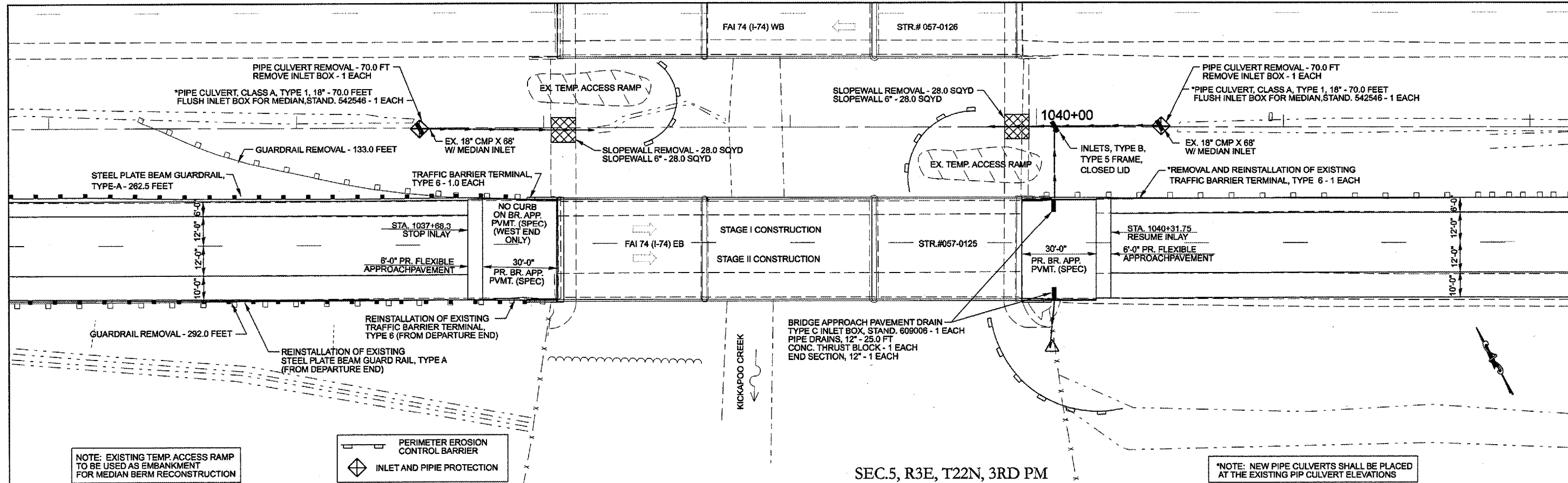
SEC.5, R3E, T22N, 3RD PM



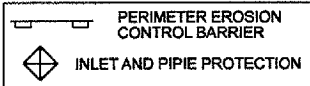
FILE NAME =	USER NAME = coll:orbw	DESIGNED -	REVISED -	<b>STATE OF ILLINOIS</b> <b>DEPARTMENT OF TRANSPORTATION</b>	<b>I-74 OVER KICKAPOO CREEK PLAN &amp; PROFILE SHEETS</b>	F.A.I. RTE.	SECTION	COUNTY	TOTAL SHEETS	SHEET NO.		
ct\projects\4595287 (48)\78672_plansheets.dgn		DRAWN -	REVISED -			74	157-221BR-3	MCLEAN	9	9		
PLOT SCALE = 40.0000' / IN.		CHECKED -	REVISED -			SCALE: 20		SHEET NO. OF SHEETS		STA. 1030+00 TO STA. 1036+00	FED. ROAD DIST. NO.	ILLINOIS FED. AID PROJECT
PLOT DATE = 12/21/2007		DATE -	REVISED -			A - Revised 1-12-00		CONTRACT NO. 70872				

DATE	
BY	
REVISIONS	
NO.	
DESCRIPTION	
DATE	
BY	
DATE	
BY	
DATE	
BY	
DATE	

DATE	
BY	
REVISIONS	
NO.	
DESCRIPTION	
DATE	
BY	
DATE	
BY	
DATE	
BY	
DATE	

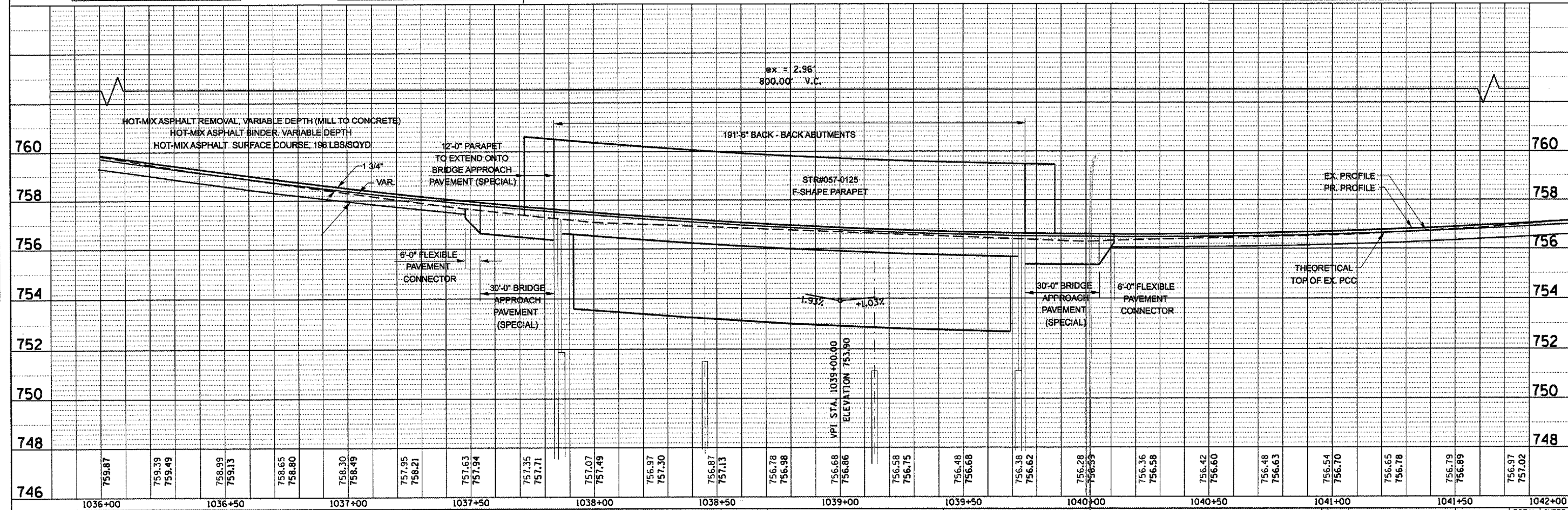


NOTE: EXISTING TEMP. ACCESS RAMP TO BE USED AS EMBANKMENT FOR MEDIAN BERM RECONSTRUCTION



NOTE: NEW PIPE CULVERTS SHALL BE PLACED AT THE EXISTING PIPE CULVERT ELEVATIONS

SEC.5, R3E, T22N, 3RD PM

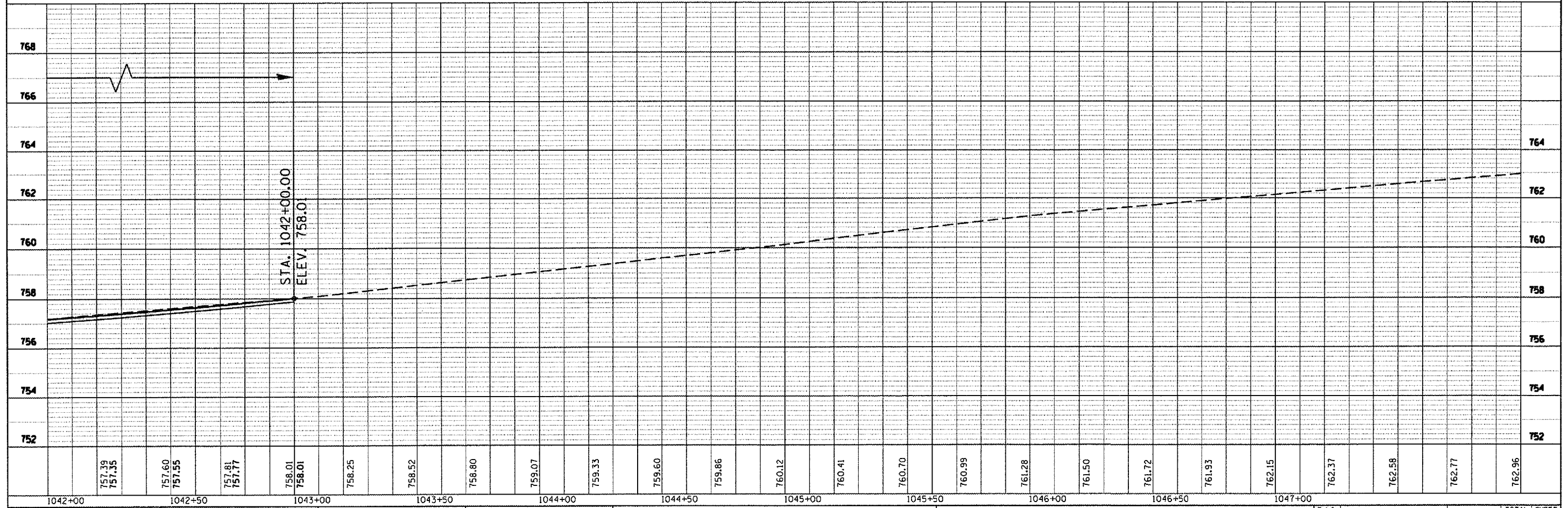
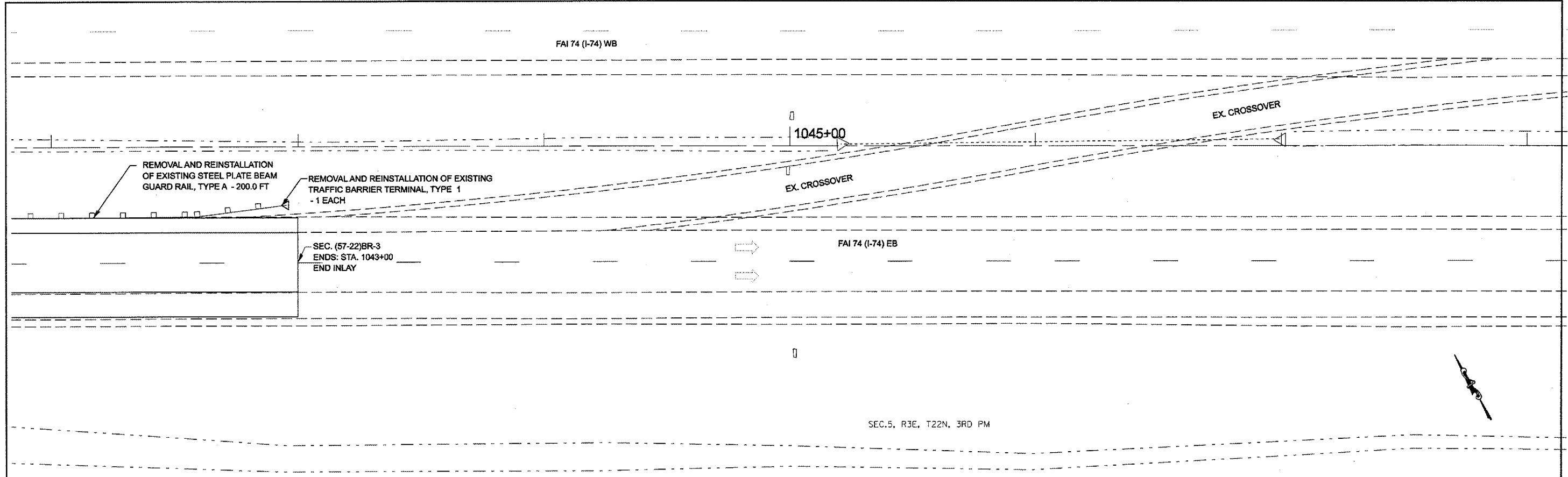


FILE NAME =	USER NAME = collierbw	DESIGNED -	REVISED -	<b>STATE OF ILLINOIS</b> <b>DEPARTMENT OF TRANSPORTATION</b>	<b>I-74 OVER KICKAPOO CREEK PLAN &amp; PROFILE SHEETS</b>	F.A.I. RTE.	SECTION	COUNTY	TOTAL SHEETS	SHEET NO.	
744		DRAWN -	REVISED -			74	(57-22)R-3	MCLEAN	10	10	10
		CHECKED -	REVISED -			SCALE: 20	SHEET NO. OF SHEETS	STA. 1036+00 TO STA. 1042+00	FED. ROAD DIST. NO.	ILLINOIS FED. AID PROJECT	CONTRACT NO. 70672
		DATE -	REVISED -								

Revised 2-13-08

PLAN	DATE
BY	
DESIGNED	
CHECKED	
DATE	
NO.	

PROFILE	DATE
BY	
DESIGNED	
CHECKED	
DATE	
NO.	



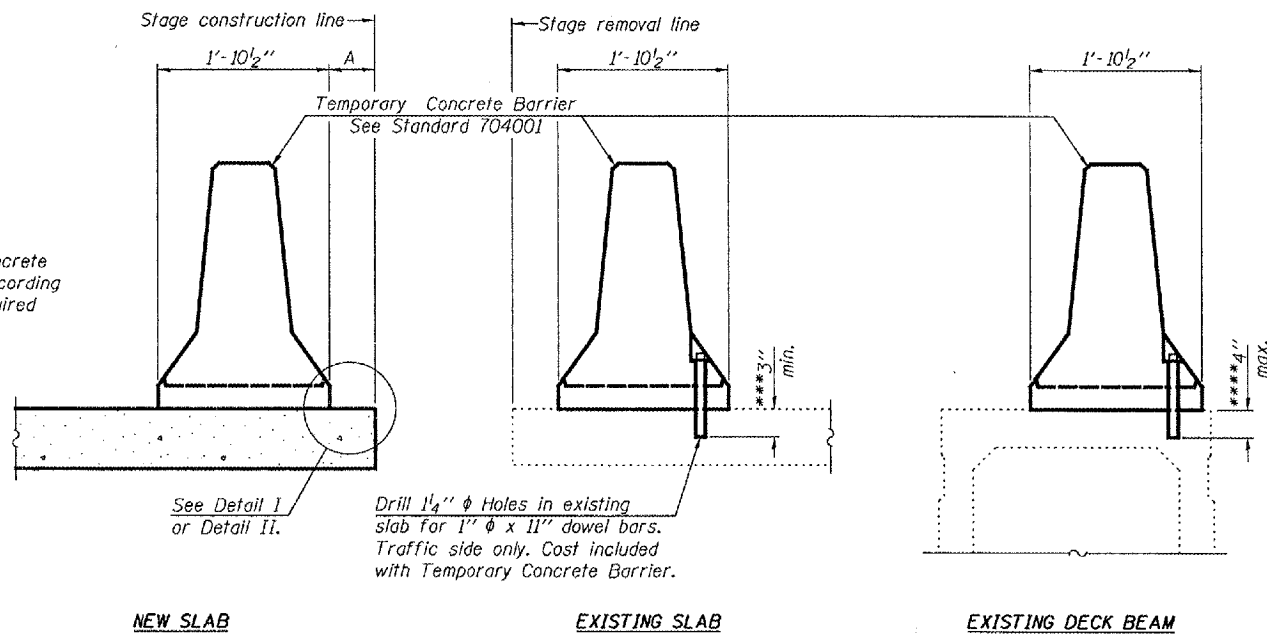
FILE NAME =	USER NAME = collierbw	DESIGNED -	REVISED -	<b>STATE OF ILLINOIS</b> <b>DEPARTMENT OF TRANSPORTATION</b>	<b>I-74 OVER KICKAPOO CREEK PLAN &amp; PROFILE SHEETS</b>	F.A.I. RTE.	SECTION	COUNTY	TOTAL SHEETS	SHEET NO.
ct:\projects\4856287 (v8)\78672_plansheets.dgn	PLOT SCALE = 48.0000' / IN.	DRAWN -	REVISED -			74	(57-22)BR-3	MCLEAN		11
PLOT DATE = 12/21/2007	DATE -	CHECKED -	REVISED -			FED. ROAD DIST. NO.	ILLINOIS FED. AID PROJECT	CONTRACT NO. 70622		
		DATE -	REVISED -			SCALE: 20	SHEET NO. OF SHEETS	STA. 1042+00 TO STA. 1048+00		

A- Revised 2-13-08

STATE OF ILLINOIS  
DEPARTMENT OF TRANSPORTATION

ROUTE NO.	SECTION	COUNTY	ITEM SHEETS	SHEET NO.	SHEET NO. 3
FAI 74	(57-22) BR-3	McLEAN	42	14	24 SHEETS
FED. ROAD DIST. NO. 7		ILLINOIS	FED. AID PROJECT		

Contract #70672



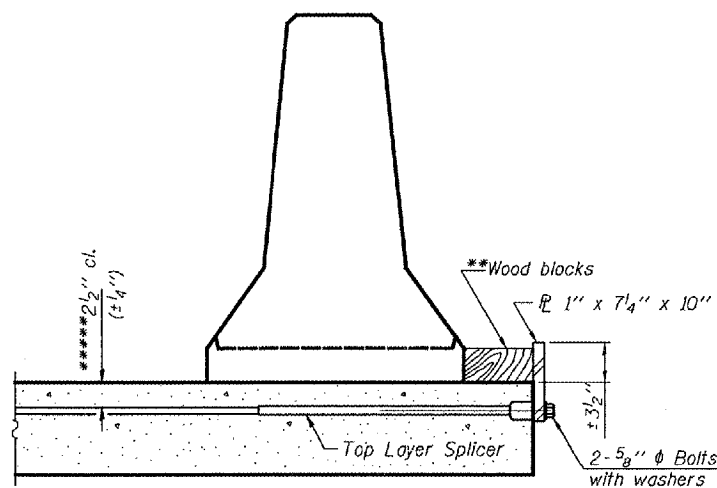
When "A" is 3'-6" or less, the temporary concrete barrier shall be anchored to the new slab according to Detail I or Detail II. No anchorage is required when "A" is greater than 3'-6".

**NOTES**

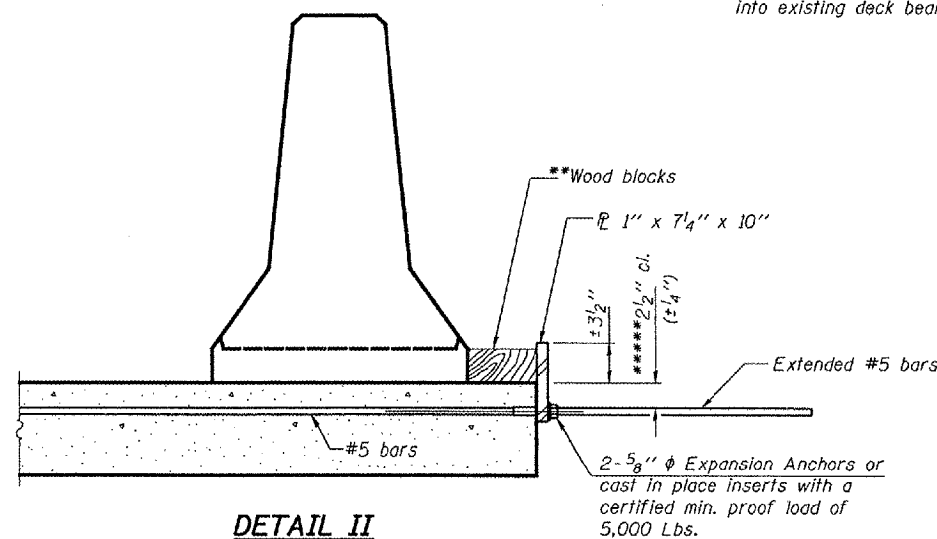
- Detail I - With Bar Splicer or Couplers:**  
Connect one (1) 1" x 7 1/4" x 10" steel  $\bar{R}$  to the top layer of couplers with 2-5/8"  $\phi$  bolts screwed to coupler at approximate  $\bar{C}$  of each barrier panel.
- Detail II - With Extended Reinforcement Bars:**  
Connect one (1) 1" x 7 1/4" x 10" steel  $\bar{R}$  to the concrete slab or concrete wearing surface with 2-5/8"  $\phi$  Expansion Anchors or cast in place inserts spaced between the top layer of reinforcement at approximate  $\bar{C}$  of each barrier panel.
- Cost of anchorage is included with Temporary Concrete Barrier. The 1" x 7" x 10" plate shall not be removed until stage II construction forms and all reinforcement bars are in place and the concrete is ready to be placed.

**SECTIONS THRU SLAB OR DECK BEAM**

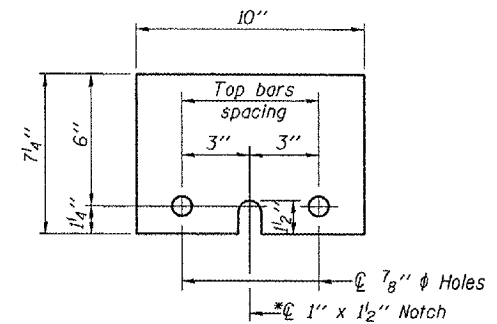
- \*\*\*Dimension shown is minimum required embedment into concrete. If hot-mix asphalt wearing surface is present, minimum embedment shall be in addition to wearing surface depth.
- \*\*\*If existing deck beam is to remain in place after stage construction, embedment shall only be into wearing surface and not into existing deck beam concrete.



**DETAIL I**



**DETAIL II**



**STEEL RETAINER  $\bar{R}$  1" x 7 1/4" x 10"**

\* Required only with Detail II

- \*\* Wood blocks may be omitted when required to provide minimum stage traffic lane width. When the wood blocks are omitted, the concrete barrier shall be in direct contact with the steel retainer plate.
- \*\*\*\*\* Prior to grinding.

DESIGNED	DPN
CHECKED	SMR
DRAWN	h.t. duong
CHECKED	DPN/SMR

Jan. 31, 2008  
EXAMINED *Thomas J. Magallon*  
SUPERVISOR OF DESIGN  
PASSED *Ralph E. Anderson*  
ENGINEER OF BRIDGES AND STRUCTURES

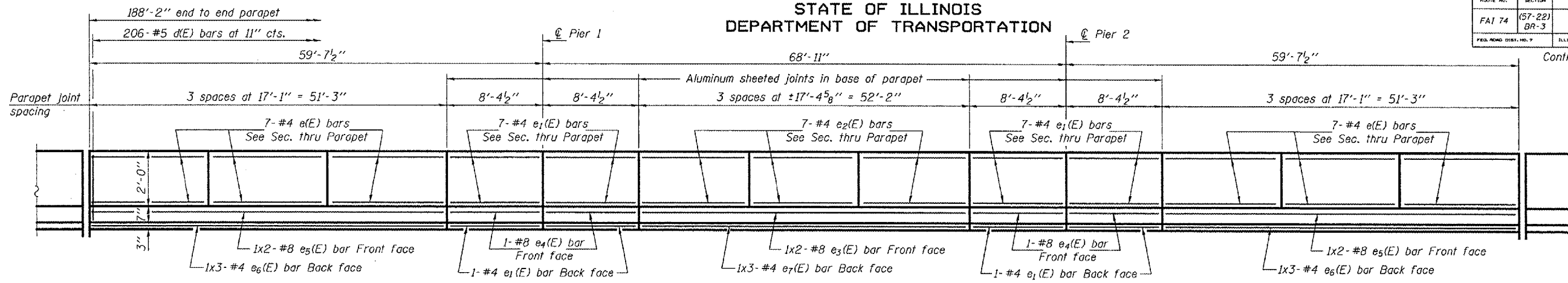
**MODIFIED TEMPORARY CONCRETE BARRIER  
FOR STAGE CONSTRUCTION  
F.A.I. RT. 74 - SEC. (57-22)BR-3  
McLEAN COUNTY  
STATION 1039+00  
STRUCTURE NO. 057-0125 (E.B.)**



STATE OF ILLINOIS  
DEPARTMENT OF TRANSPORTATION

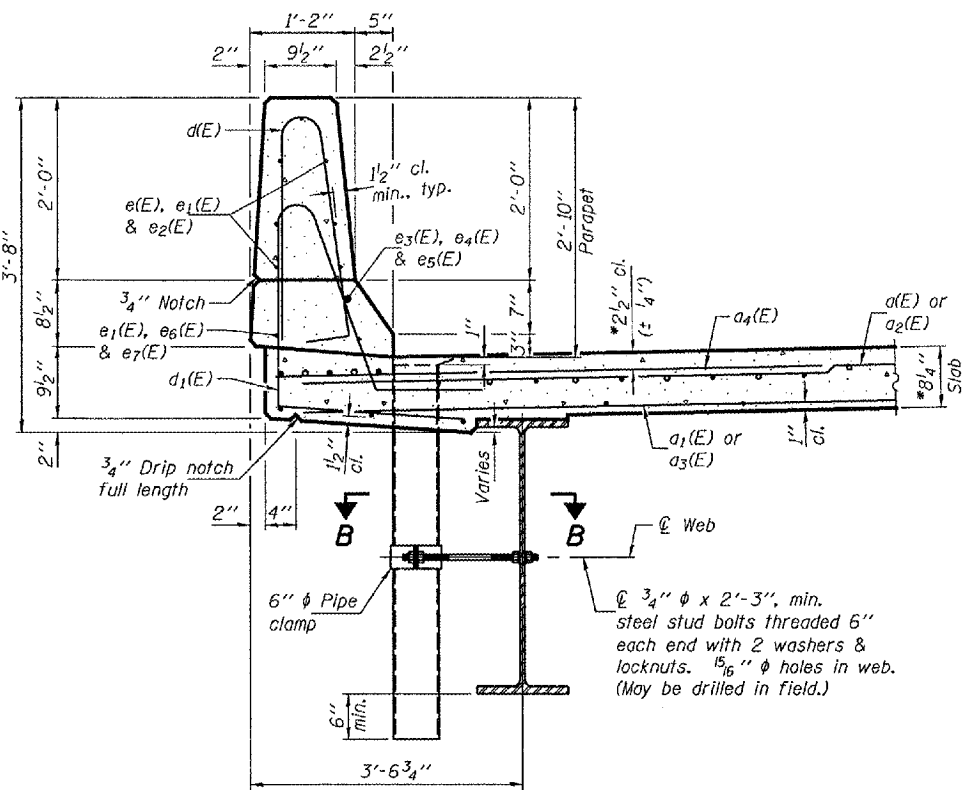
ROUTE NO.	SECTION	COUNTY	SHEET NO.	SHEET NO.	SHEET NO.
FAI 74	(57-22) BR-3	McLEAN	42	22	24 SHEETS
FED. ROAD DIST. NO. 7		ILLINOIS	FED. AID PROJECT		

Contract #70672



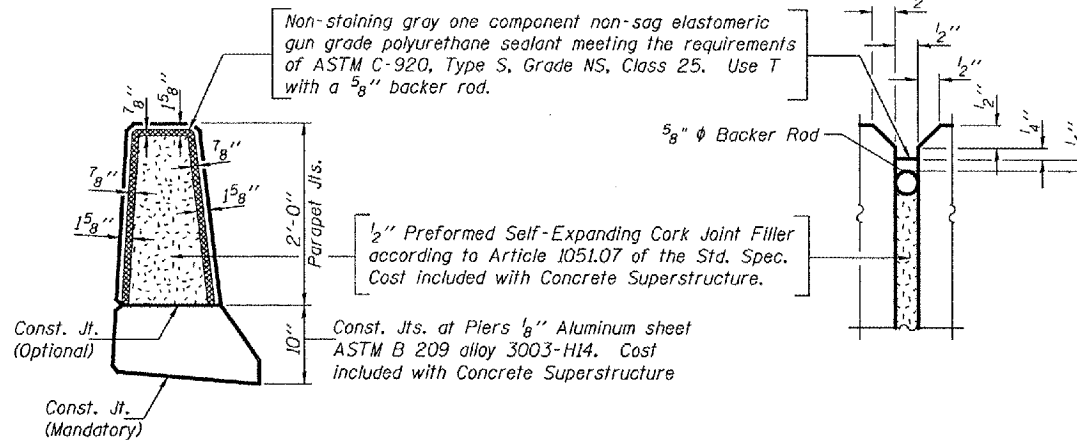
**MIN. BAR LAPS**  
(Parapet)  
#4 bar = 1'-4"  
#8 bar = 3'-5"

**INSIDE ELEVATION OF PARAPET**



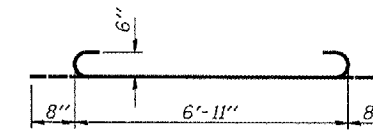
**SECTION THRU PARAPET**

\*Prior to Grinding

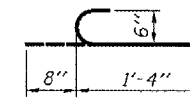


**PARAPET JOINT DETAILS**

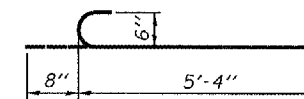
Notes: Drains shall be located clear of all diaphragms. Fiberglass pipe shall conform to ASTM D 2996, with short-time rupture strength hoop tensile stress of 30,000 p.s.i. minimum. The exterior surfaces of the floor drains shall be painted with the finish coat as specified in the Special Provisions for Cleaning and Painting New Metal Structures. The exterior surfaces of the drains shall be cleaned according to Steel Structures Painting Council's Spec. SSPC-SPI prior to painting.



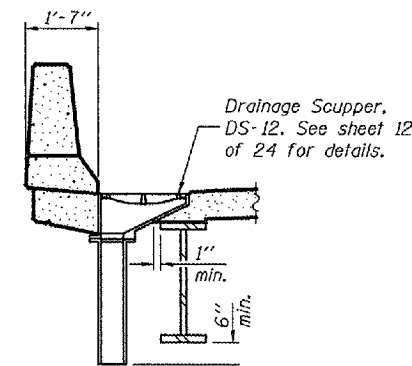
**BAR a5(E)**



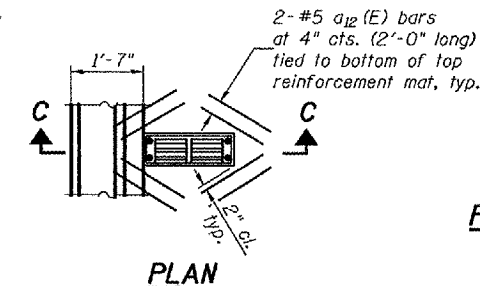
**BAR a6(E)**



**BAR a7(E)**



**SECTION C-C**



**PLAN**

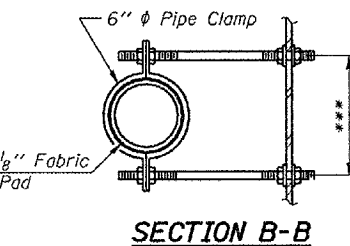
Note: Cut longitudinal reinforcement to clear drainage scuppers.

**SUPERSTRUCTURE  
BILL OF MATERIAL**

Bar	No.	Size	Length	Shape
a(E)	301	#5	19'-2"	—
a1(E)	226	#5	18'-9"	—
a2(E)	301	#5	23'-2"	—
a3(E)	226	#5	22'-9"	—
a4(E)	300	#6	6'-0"	—
a5(E)	24	#6	8'-3"	—
a6(E)	6	#6	2'-0"	—
a7(E)	6	#6	6'-0"	—
a8(E)	2	#6	15'-9"	—
a9(E)	2	#6	19'-9"	—
a10(E)	8	#7	19'-2"	—
a11(E)	8	#7	23'-2"	—
a12(E)	16	#5	2'-0"	—
b(E)	276	#5	32'-9"	—
b1(E)	86	#6	37'-6"	—
b2(E)	294	#5	28'-4"	—
d(E)	412	#5	5'-7"	—
d1(E)	412	#5	8'-3"	—
e(E)	84	#4	16'-10"	—
e1(E)	64	#4	8'-1"	—
e2(E)	42	#4	17'-1"	—
e3(E)	4	#8	27'-8"	—
e4(E)	8	#8	8'-1"	—
e5(E)	8	#8	27'-3"	—
e6(E)	12	#4	17'-11"	—
e7(E)	6	#4	18'-3"	—
x(E)	72	#5	5'-11"	—
Reinforcement Bars, Epoxy Coated		Pound	59360	
Concrete Superstructure		Cu. Yds.	261.8	

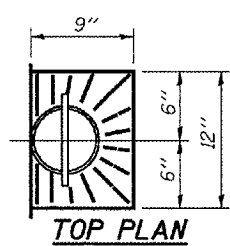
Bars indicated thus 1 x 2-#8 etc. indicates 1 line of bars with 2 lengths per line.

**SUPERSTRUCTURE DETAILS**  
F.A.I. RT. 74 - SEC. (57-22)BR-3  
McLEAN COUNTY  
STATION 1039+00  
STRUCTURE NO. 057-0125 (E.B.)

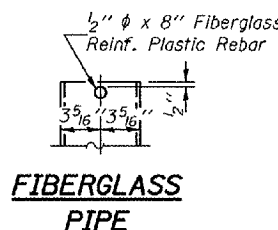


**SECTION B-B**

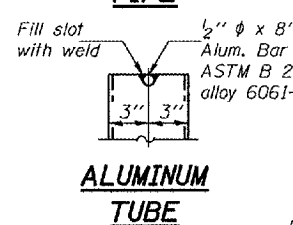
\*\*\*Dimension as required by Pipe Clamp



**TOP PLAN**

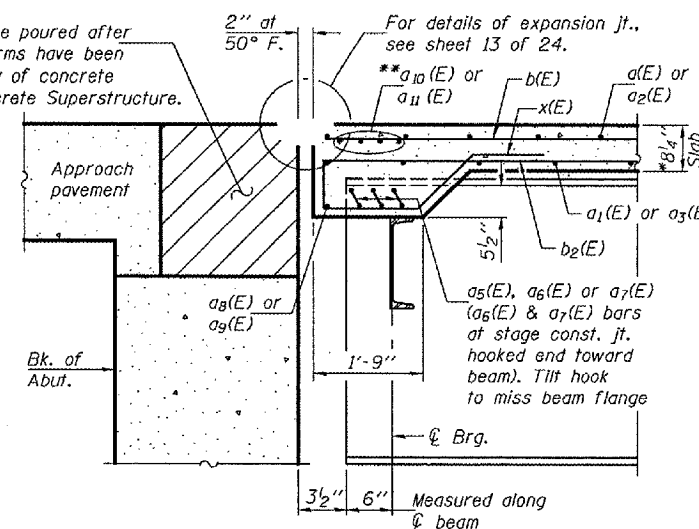


**FIBERGLASS PIPE**



**ALUMINUM TUBE**

TOP PLAN (Showing Aluminum Tube)



**SECTION A-A**

\*\*4-a10(E) & 4-a11(E) bars at 4" cts. Place under longitudinal bars.

DESIGNED	DPN
CHECKED	SMR
DRAWN	h.t. duong
CHECKED	DPN/SMR

EXAMINED *Thomas J. Demagala*  
ENGINEER OF BRIDGE DESIGN  
PASSED *Ronald E. Anderson*  
ENGINEER OF BRIDGES AND STRUCTURES

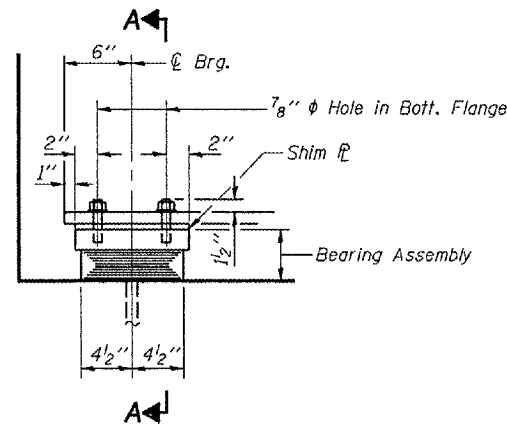
Jan. 31, 2008

Added sheet 2-13-08

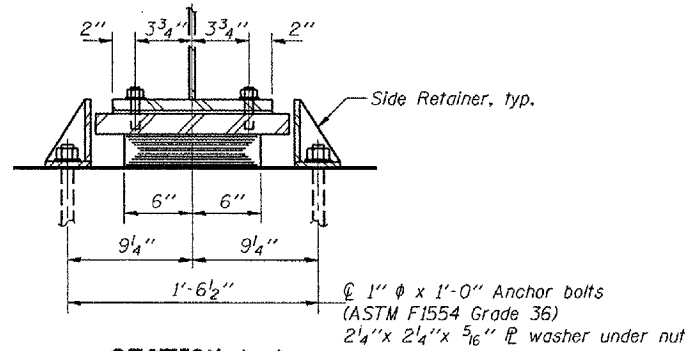
STATE OF ILLINOIS  
DEPARTMENT OF TRANSPORTATION

ROUTE NO.	SECTION	COUNTY	STA. NO.	SHEET	SHEET NO. 16 24 SHEETS
FAI 74	(57-22) BR-3	McLEAN	42	27	
FED. ROAD DIST. NO. 7	ILLINOIS	FED. AID PROJECT-			

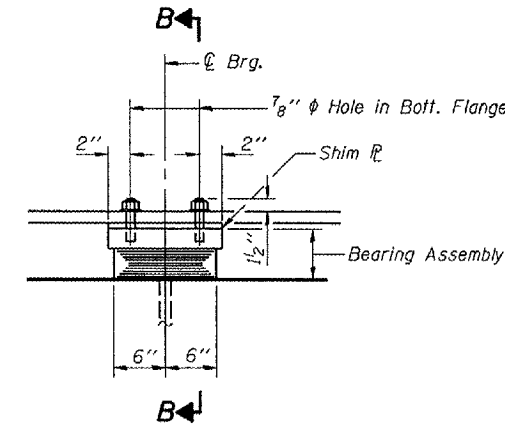
Contract #70672



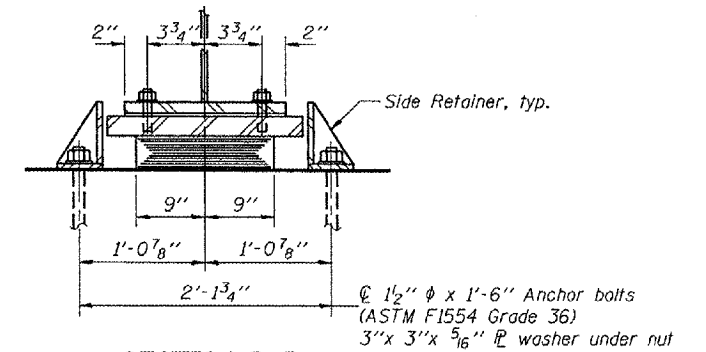
ELEVATION AT WEST ABUT.



SECTION A-A



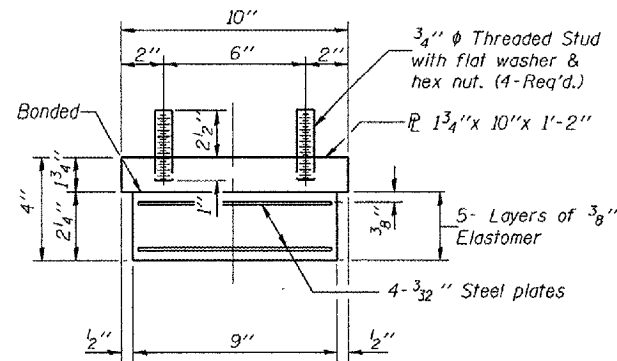
ELEVATION AT PIER 2



SECTION B-B

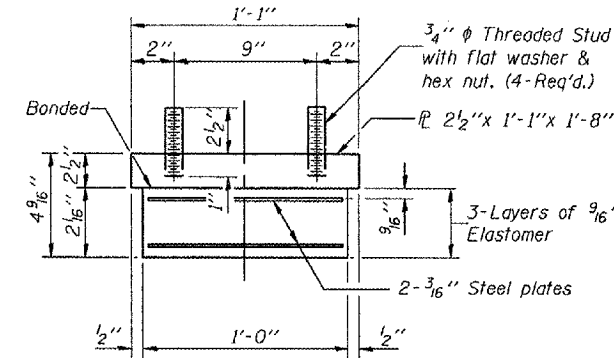
TYPE I ELASTOMERIC EXP. BRG.

TYPE I ELASTOMERIC EXP. BRG.



BEARING ASSEMBLY

Note:  
Shim plates shall not be placed under Bearing Assembly.



BEARING ASSEMBLY

Note:  
Shim plates shall not be placed under Bearing Assembly.

Notes:  
Anchor bolts shall be ASTM F1554 all-thread (or an Engineer-approved alternate material) of the grade(s) and diameter(s) specified, ASTM A307 Grade C anchor bolts may be used in lieu of ASTM F1554 Grade 36 (Fy=36ksi). The corresponding specified grade of AASHTO M314 anchor bolts may be used in lieu of ASTM F1554.

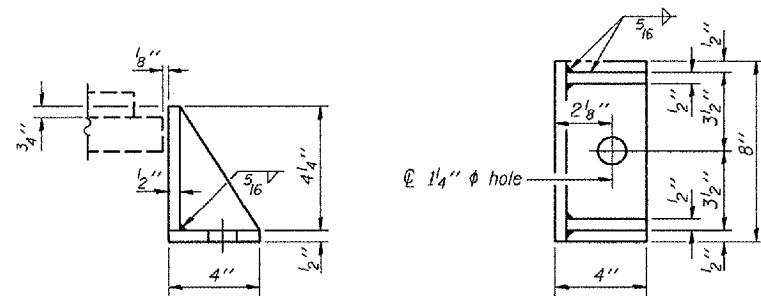
Anchor bolts for side retainers may be cast in place or installed in holes drilled before or after members are in place.

Drilled and set anchor bolts shall be installed according to Article 521.06 of the Standard Specifications.

Side retainers and other steel members required for the bearing assembly shall be included in the cost of Elastomeric Bearing Assembly, Type I.

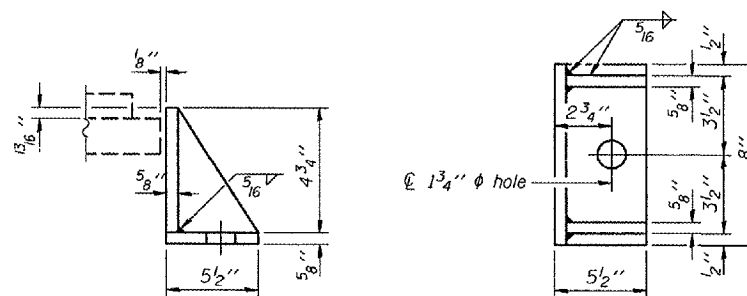
The structural steel plates of the bearing assembly shall conform to the requirements of AASHTO M 270, Grade 50.

Two 1/8 in. adjusting shims shall be provided for each bearing in addition to all other plates or shims and placed as shown on bearing details.



SIDE RETAINER

Equivalent rolled angle with stiffeners will be allowed in lieu of welded plates.



SIDE RETAINER

Equivalent rolled angle with stiffeners will be allowed in lieu of welded plates.

BILL OF MATERIAL

Item	Unit	Total
Elastomeric Bearing Assembly Type I	Each	12
Anchor Bolts 1" dia	Each	12
Anchor Bolts 1 1/2" dia	Each	12

DESIGNED	DPN
CHECKED	SMR
DRAWN	h.t. duong
CHECKED	DPN/SMR

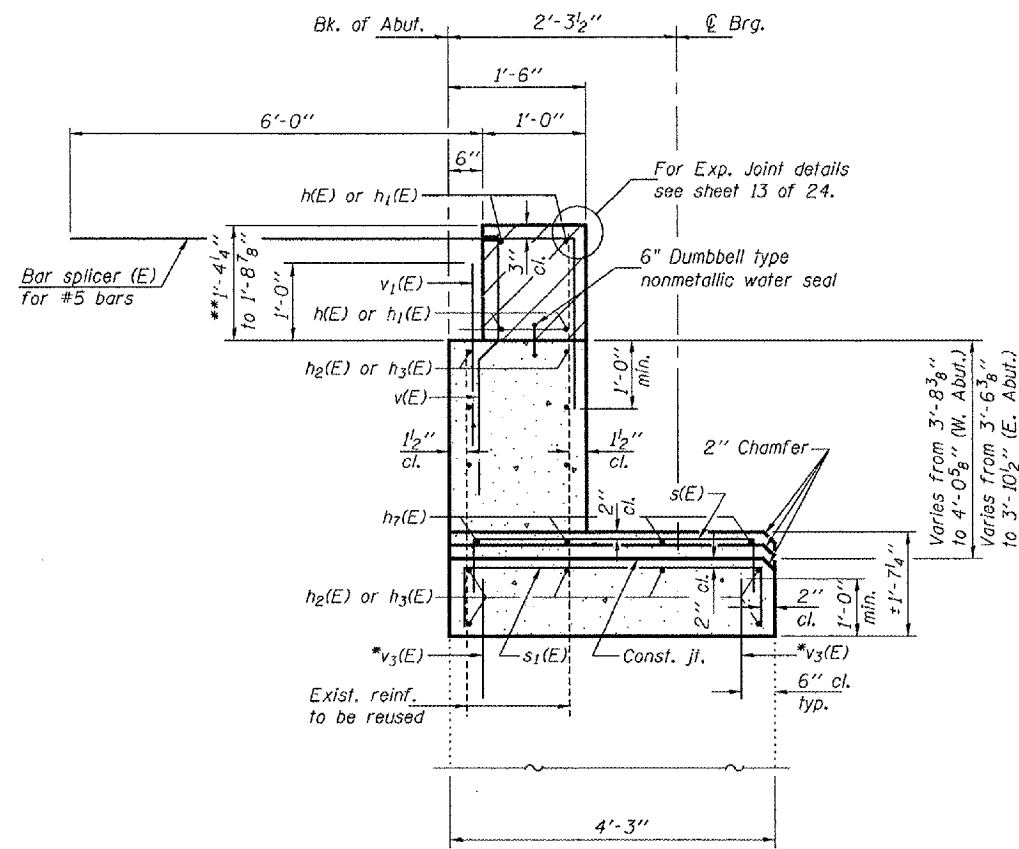
Jan. 31, 2008  
EXAMINED *Thomas J. Damagallo*  
PASSED *Ronald E. Anderson*  
ENGINEER OF BRIDGES AND STRUCTURES

BEARING DETAILS  
F.A.I. RT. 74 - SEC. (57-22)BR-3  
McLEAN COUNTY  
STATION 1039+00  
STRUCTURE NO. 057-0125 (E.B.)

A- Added sheet 2-13-08

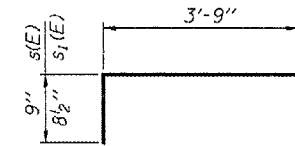
STATE OF ILLINOIS  
DEPARTMENT OF TRANSPORTATION

ROUTE NO.	SECTION	COUNTY	TOTAL SHEETS	SHEET	SHEET NO. 21
FAI 74	(57-22) BR-3	MCLEAN	42	32	24 SHEETS
FED. ROAD DIST. NO. 7	ILLINOIS	FED. AID PROJECT	Contract #70672		

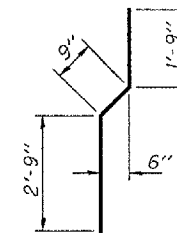


SEC. THRU ABUT.

\* Epoxy grout #4 v<sub>3</sub>(E) bars in 9" min. drilled holes according to Section 584 of the Standard Specifications.  
\*\* Prior to Grinding



BARS s(E) & s<sub>1</sub>(E)



BAR v(E)

TWO ABUTMENTS  
BILL OF MATERIAL

Bar	No.	Size	Length	Shape
h(E)	8	#6	19'-4"	—
h <sub>1</sub> (E)	8	#6	23'-4"	—
h <sub>2</sub> (E)	28	#5	19'-3"	—
h <sub>3</sub> (E)	28	#5	23'-3"	—
h <sub>7</sub> (E)	8	#5	4'-11"	—
s(E)	12	#4	5'-3"	□
s <sub>1</sub> (E)	88	#4	5'-2"	□
v(E)	88	#4	5'-3"	—
v <sub>1</sub> (E)	88	#5	3'-6"	—
v <sub>3</sub> (E)	168	#4	1'-10"	—
v <sub>4</sub> (E)	8	#5	4'-9"	—
Structure Excavation		Cu. Yd.	82.4	
Concrete Structures		Cu. Yd.	30.1	
Reinforcement Bars, Epoxy Coated		Pound	3020	
Concrete Sealer		Sq. Ft.	806	

For details of bar splicers, see sheet 24 of 24.

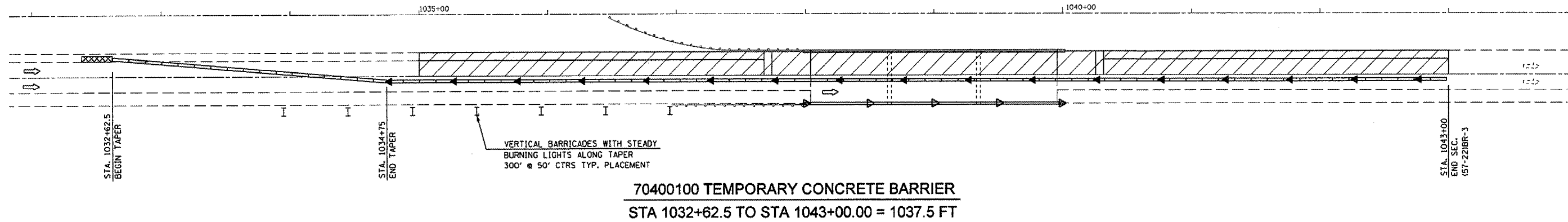
DESIGNED	DPN
CHECKED	SMR
DRAWN	h.f. duong
CHECKED	DPN/SMR

Jan. 31, 2008  
EXAMINED *Thomas J. Damagala*  
PASSED *Rafael G. Anderson*  
ENGINEER OF BRIDGES AND STRUCTURES

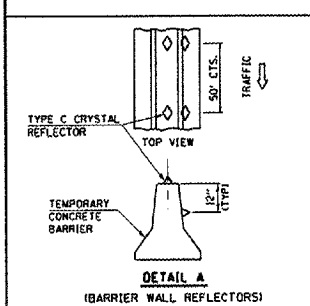
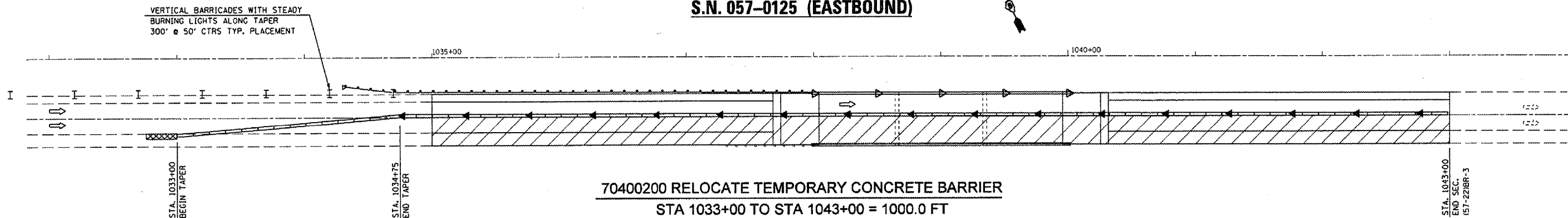
ABUTMENT DETAILS  
F.A.I. RT. 74 - SEC. (57-22)BR-3  
MCLEAN COUNTY  
STATION 1039+00  
STRUCTURE NO. 057-0125 (E.B.)

A- Added sheet 2-13-08

**STAGE I CONSTRUCTION**  
**S.N. 057-0125 (EASTBOUND)**



**STAGE II CONSTRUCTION**  
**S.N. 057-0125 (EASTBOUND)**



SYMBOLS	
◀	AMBER MONODIRECTIONAL REFLECTOR 50' CTS
▷	CRYSTAL MONODIRECTIONAL REFLECTOR 50' CTS
▬	TEMPORARY CONCRETE BARRIER
I	VERTICAL BARRICADES 50' CTS
⊠	IMPACT ATTENUATOR

**PLAN NOTES:**

ALL STAGING DETAILS SET UP IN ACCORDANCE WITH TRAFFIC CONTROL AND PROTECTION 701402.

PRIOR TO BARRIER PLACEMENT TRAFFIC CONTROL SHALL BE SET UP IN ACCORDANCE WITH STANDARD 701401.

TRAFFIC CONTROL DETAILS NOT SHOWN ARE TO CONFORM WITH STANDARD 701400 AND 701402.

MESSAGE BOARD SHALL BE PLACED TWO WEEKS PRIOR TO CONSTRUCTION AND MAY BE ADJUSTED TO MEET FIELD CONDITIONS.

RESIDENT ENGINEER AND TRAFFIC CONTROL SUPERVISOR SHALL PROVIDE APPROPRIATE MESSAGE FOR CMS.

RAISED REFLECTIVE PAVEMENT MARKERS AFFECTED BY THE PROPOSED CONSTRUCTION SHALL BE REPLACED. THIS COST SHALL BE INCIDENTAL TO THE VARIOUS TRAFFIC CONTROL PAY ITEMS.

REFLECTORS FOR BARRIER WALL, BRIDGE RAIL AND GUARDRAIL SHALL BE INCLUDED IN THE COST FOR THE APPLICABLE TRAFFIC CONTROL PAY ITEMS.

PLACE VERTICAL BARRICADES WITH STEADY BURNING LIGHTS AT 50 FOOT CENTERS, 300 FEET PRIOR TO PINCH POINTS CAUSED BY EXISTING GUARDRAIL. THIS COST WILL BE INCIDENTAL TO STANDARD 701402

REFLECTORIZED TEMPORARY MARKING TAPE SHALL BE PLACED THROUGHOUT THE TAPER AND ALONGSIDE THE WORK AREA. THE EDGE LINE SHALL BE YELLOW FOR LEFT LANE CLOSURES. COST FOR THE PLACEMENT AND REMOVAL SHALL BE INCLUDED IN COST FOR APPLICABLE TRAFFIC CONTROL PAY ITEM.

FILE NAME = c:\projects\4565287 (v8)\70672.stage.dgn	USER NAME = eallierbw	DESIGNED -	REVISED -
		DRAWN -	REVISED -
		CHECKED -	REVISED -
		DATE -	REVISED -

**STATE OF ILLINOIS**  
**DEPARTMENT OF TRANSPORTATION**

**I-74 OVER KICKAPOO CREEK - STAGE CONSTRUCTION DETAIL**

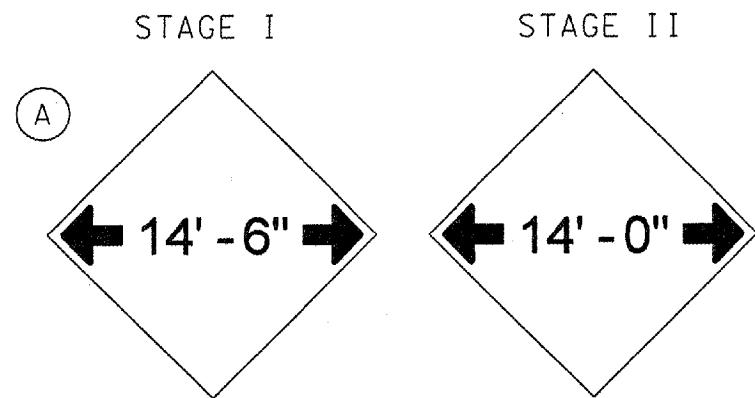
SCALE: SHEET NO. OF SHEETS STA. TO STA.

F.A.I. RTE. 74	SECTION 157-221BR-3	COUNTY MCLEAN	TOTAL SHEETS 140
FED. ROAD DIST. NO. ILLINOIS FED. AID PROJECT			CONTRACT NO. 70672

A- Revised 2-12-09

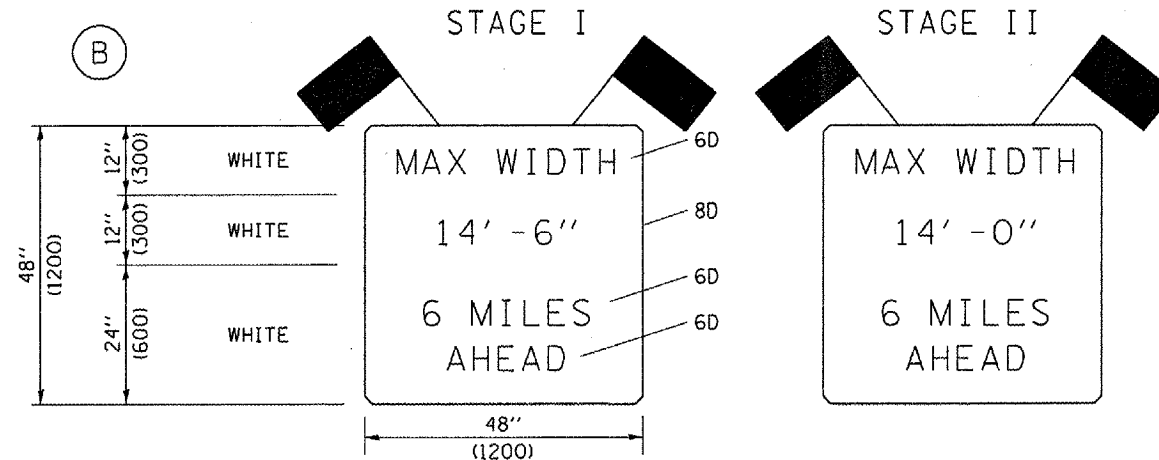


# WIDTH RESTRICTION SIGNING



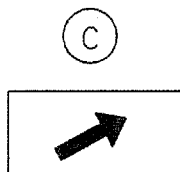
W12-I102-48"x48" - ORANGE (O)

- SIGN (A) 2 SIGNS - W12-2(O)-48"x48" - ORANGE (O)
1. TO BE PLACED 200' SOUTH OF OF US-51 NB TO I-74 EB RAMP
  2. TO BE PLACED JUST PRIOR TO I-74 BRIDGE ON US-51 BUS. SB TO I-74 EB RAMP

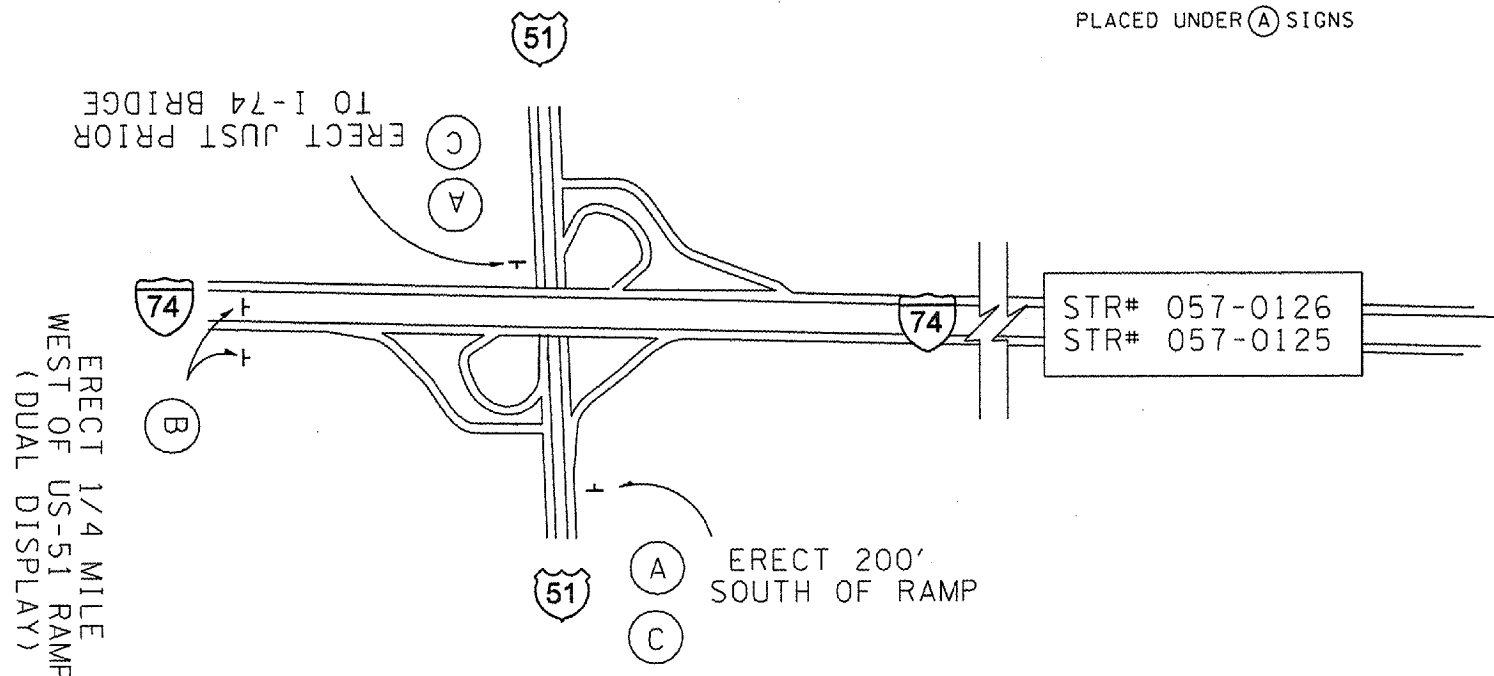


W12-I103-48"x48" - WHITE

- SIGN (B) 2 SIGNS - W12-I103 - 48" X 48" WHITE
- AS SHOWN ARE TO BE PLACED  
FLAGS REQUIRED  
PLACED APPROXIMATELY  
1/4 MILES WEST OF US-51 (DUAL DISPLAY) ON I-74EB



M6-2R 21" X 15" ORANGE (O)  
PLACED UNDER (A) SIGNS



NOTE: STAGE I 14' -6"  
STAGE II 14' -0"

### GENERAL NOTES

NOTE: STAGE I WIDTH 14' -6" STAGE II WIDTH 14' -0"

1. ALL TRAFFIC CONTROL DEVICES SHALL BE FURNISHED, ERECTED AND MAINTAINED BY THE CONTRACTOR.
2. ALL (B) SIGNS SHALL HAVE FLAGS INSTALLED UNLESS OTHERWISE DIRECTED.
3. LOCATIONS OF TRAFFIC CONTROL DEVICES MAY BE ADJUSTED BY THE ENGINEER.
4. ALL TRAFFIC CONTROL SHOWN ON THIS SHEET SHALL BE PAID FOR AT THE CONTRACT LUMP SUM PRICE FOR WIDTH RESTRICTION SIGNING.
5. ALL SIGNS SHALL BE POST MOUNTED UNLESS OTHERWISE DIRECTED.
6. ALL SIGNS SHOWN ORANGE (O) SHALL BE FLUORESCENT ORANGE.

Note: All dimensions are in INCHES (millimeters) unless otherwise shown.

DESIGNER NOTE: PROVIDE MAP WITH SIGN LOCATIONS (A, B, ETC.) AND COORDINATE WITH TRAFFIC OPERATIONS ENGINEER.  
INCLUDE DISTRICT SPECIAL PROVISION - "WIDTH RESTRICTION SIGNING"

### DISTRICT 5 DETAIL NO. X7200201

FILE NAME : c:\projects\4d585207 (v8)\70672.stage.dgn	USER NAME : collorbw	DESIGNED - DRAWN -	REVISED - 11/06 REVISED - REVISED -	<b>STATE OF ILLINOIS DEPARTMENT OF TRANSPORTATION</b>	<b>WIDTH RESTRICTION SIGNING</b>	SCALE: SHEET NO. OF SHEETS STA. TO STA.	F.A. I. RTE. SECTION COUNTY TOTAL SHEETS 74 (57-22)BR-3 MCLEAN 12/21
PLOT SCALE = 100.0000 1" IN. PLOT DATE = 12/21/2007				CONTRACT NO. 70672		FED. ROAD DIST. NO. ILLINOIS FED. AID PROJECT	

A-2001-12-08