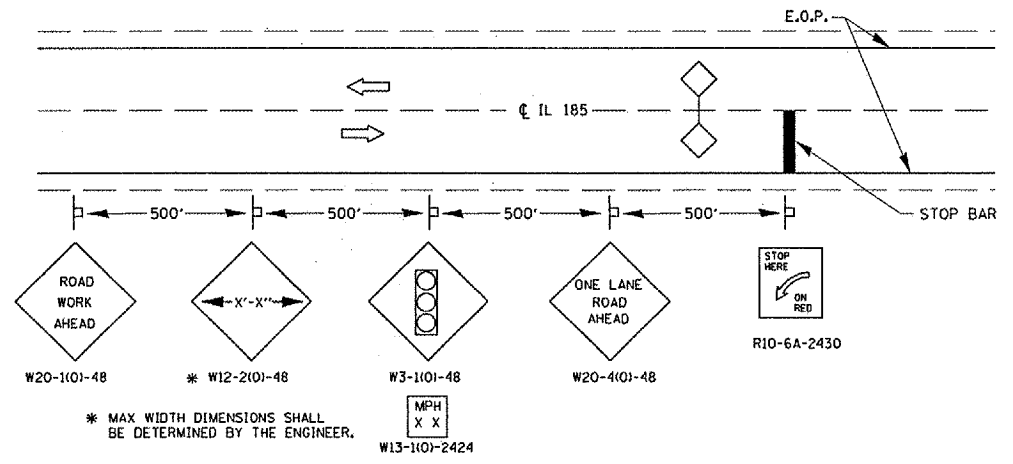


LEGEND

- BRIDGE BEAM REMOVAL AND REPLACEMENT
- TEMPORARY CONCRETE BARRIER
- DRUM WITH STEADY BURN LIGHT
- DIRECTION OF TRAFFIC
- TEMPORARY TRAFFIC SIGNAL
- INDUCTION LOOP DETECTOR
- TEMPORARY IMPACT ATTENUATOR
- TYPE III BARRICADE
- TEMPORARY PAVEMENT MARKING - LINE 5"
- TEMPORARY PAVEMENT MARKING - LINE 24"

STAGE 2 TRAFFIC CONTROL LAYOUT



TYPICAL SIGNING DETAIL

PRELIMINARY STAGE - SUGGESTED CONSTRUCTION SEQUENCE

THE PROPOSED BRACING FOR SPAN 2, BEAM 1 SHALL BE CONSTRUCTED PRIOR TO ANY TRAFFIC CONTROL STAGING.
 PLACE "MAX WIDTH" SIGNING AT THE LOCATIONS SHOWN IN THESE PLANS.
 SET UP STAGE 1 TRAFFIC CONTROL UTILIZING THESE PLANS IN CONJUNCTION WITH HIGHWAY STANDARD 701321.
 INSTALL TEMPORARY SIGNALIZATION AT THE LOCATIONS CALLED OUT ON THESE PLANS.
 PLACE TEMPORARY CONCRETE BARRIER AND PAVEMENT MARKINGS (STOP BARS, LANE LINES, ETC.) IN ACCORDANCE TO THESE PLANS.

STAGE I - SUGGESTED CONSTRUCTION SEQUENCE

REMOVE THE EXISTING 5" REINFORCED CONCRETE WEARING SURFACE ALONG SPAN 3 OVER BEAMS 5 AND 6.
 PERFORM STAGE 1 P.P.C. DECK BEAM REMOVAL AND REPLACEMENT FOR SPAN 3, BEAMS 5 AND 6. SEE THE STRUCTURAL DETAIL SHEETS WITHIN THESE PLANS.
 CONSTRUCT THE 5" REINFORCED CONCRETE WEARING SURFACE ATOP BEAMS 5 AND 6.

STAGE II - SUGGESTED CONSTRUCTION SEQUENCE

FOLLOWING THE COMPLETION OF STAGE I CONSTRUCTION, RELOCATE THE TEMPORARY CONCRETE BARRIER WALL AND PLACE TEMPORARY PAVEMENT MARKING IN ACCORDANCE TO THESE PLANS.
 REMOVE THE EXISTING 5" REINFORCED CONCRETE WEARING SURFACE ALONG SPAN 3, BEAM 7.
 PERFORM STAGE 2 P.P.C. DECK BEAM REMOVAL AND REPLACEMENT FOR SPAN 3 OVER BEAM 7.
 CONSTRUCT THE 5" REINFORCED CONCRETE WEARING SURFACE ATOP BEAM 7.

TRAFFIC STAGING NOTES

SIGNS STATING "UNEVEN LANES" AND "SIGNALS AHEAD" SHALL BE ERECTED DURING STAGE CONSTRUCTION BY THE CONTRACTOR AT LOCATIONS AS DIRECTED BY THE ENGINEER. THESE SIGNS ARE INCIDENTAL TO THE COST OF THE CONTRACT.
 DURING STAGE CONSTRUCTION, EXTRA FLAGGERS ARE NECESSARY FOR BRIDGE DECK BEAM REMOVAL & REPLACEMENT OPERATIONS. EXTRA FLASHERS AND WARNINGS ARE NEEDED FOR TRAFFIC CONTROL AT NIGHT DUE TO THE VERTICAL RISE JUST TO THE WEST OF THE LAMOINE RIVER.
 THIS TRAFFIC CONTROL PLAN SHALL BE USED IN CONJUNCTION WITH STANDARD 701321 AND AS DIRECTED BY THE ENGINEER. ~~ALL WORK REQUIRED TO SET UP, MAINTAIN, AND REMOVE TRAFFIC CONTROL AS DETAILED IN THESE PLANS SHALL BE INCLUDED IN THE COST FOR TRAFFIC CONTROL AND PROTECTION COMPLETE.~~
 THE CONTRACTOR SHALL PLACE MAX WIDTH SIGNS BEFORE IMPLEMENTING ANY STAGE TRAFFIC CONTROL. ~~THESE SIGNS SHALL BE INCLUDED IN THE COST OF TRAFFIC CONTROL AND PROTECTION COMPLETE.~~ (SEE MAX WIDTH SIGN DETAIL SHEET).
 TEMPORARY RUMBLE STRIPS, TEMPORARY SIGNING, TEMPORARY BARRIER WALL REFLECTORS, SHALL BE INSTALLED IN ACCORDANCE WITH STANDARD 701321 OR AS DIRECTED BY THE ENGINEER.
 THE CONTRACTOR SHALL NOTIFY THE DISTRICT SIX BUREAU OF OPERATIONS, TRAFFIC SECTION (PH. 782-7314) AT LEAST ONE WEEK PRIOR TO IMPLEMENTING STAGE TRAFFIC CONTROL.
 THE FIRST AND LAST SECTION OF EVERY RUN OF TEMPORARY CONCRETE BARRIER WALL SHALL BE SECURED TO THE PAVEMENT WITH DOWEL BARS IN ACCORDANCE WITH SECTION 704.04 OF THE STANDARD SPECIFICATIONS BOOK.
 ALL BORED HOLES FOR DOWEL BARS THAT WOULD SECURE ANY SECTION OF TEMPORARY CONCRETE BARRIER WALL TO THE BRIDGE DECK WEARING SURFACE SHALL HAVE A MAXIMUM DEPTH OF 5" AS TO AVOID DAMAGING THE UNDERLYING DECK BEAMS.
 THE CONTRACTOR SHALL NOTIFY KYLE ARMSTRONG (PH. 558-6523) IN THE DISTRICT 6 TRAFFIC SECTION OF THE BUREAU OF OPERATIONS AT LEAST THREE DAYS PRIOR TO ACTIVATING THE TEMPORARY TRAFFIC SIGNALS.
 SAWCUTS FOR THE PROPOSED REMOVAL OF THE 5" REINFORCED CONCRETE WEARING SURFACE ATOP THE BEAMS SHALL BE INCLUDED IN THE COSTS FOR "REMOVAL OF EXISTING PPC DECK BEAMS".

FILE NAME =	USER NAME = laughlinr1	DESIGNED - RTS	REVISED - DEC. 11, 2007
ca:\Projects\0602508\shdtdetails.dgn		DRAWN - RTS	REVISED -
		CHECKED - MEB	REVISED -
		DATE - DEC. 11, 2007	REVISED -

**STATE OF ILLINOIS
DEPARTMENT OF TRANSPORTATION**

TRAFFIC CONTROL DETAILS	
SCALE:	SHEET NO. 2 OF 5 SHEETS
STA.	TO STA.

FAP RTE.	SECTION	COUNTY	TOTAL SHEETS	SHEET NO.
713	(120BRI)-2	SCHUYLER	12	5
FED. ROAD DIST. NO. ILLINOIS FED. AID PROJECT			CONTRACT NO. 72B65	

Rev.