

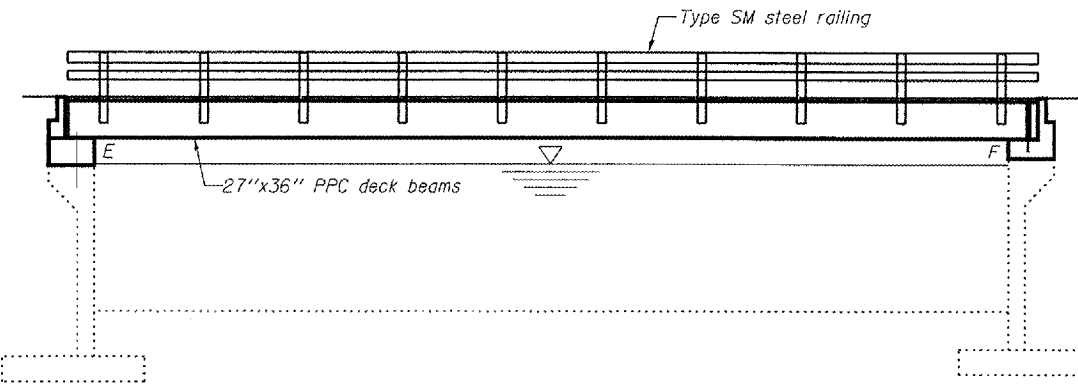
STATE OF ILLINOIS
DEPARTMENT OF TRANSPORTATION

ROUTE NO.	SECTION	COUNTY	SHEETS	SHEET NO.
IL 97		SANGAMON	10	3
FED. ROAD DIST. NO. 7	ILLINOIS	FED. AID PROJECT-		

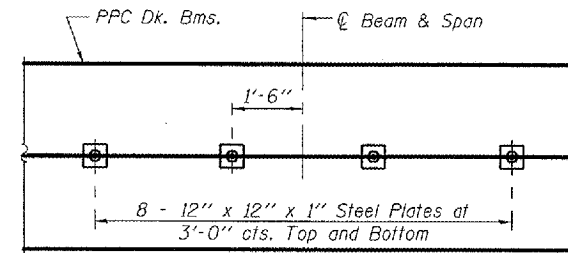
Contract Number: 72B69

GENERAL NOTES

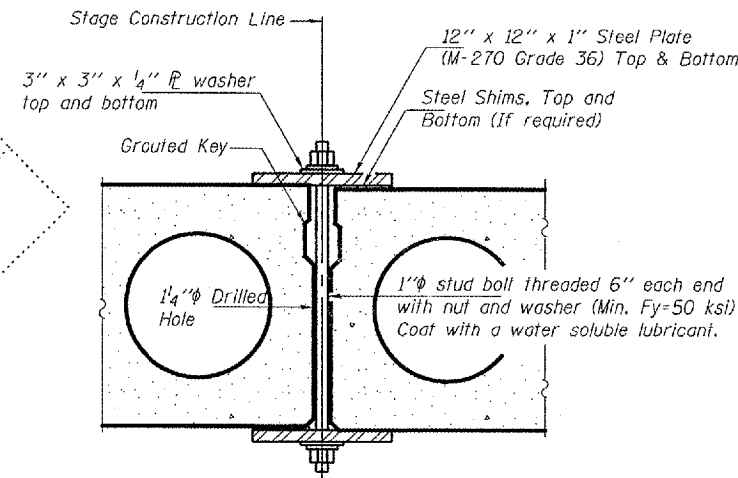
Reinforcement bars shall conform to the requirements of ASTM A 706 Gr 60 (IL Modified). See Special Provisions.
 Reinforcement bars designated (E) shall be epoxy coated.
 Plan dimensions and details relative to existing plans are subject to routine variations. The Contractor shall field verify existing dimensions and details affecting new construction and make necessary approved adjustments prior to construction or ordering of materials. Such variations shall not be cause for additional compensation for a change in scope of the work, however, the Contractor will be paid for the quantity actually furnished based upon the unit price bid for the work.
 Existing reinforcement bars extending into the removal area shall be cleaned, straightened and incorporated into the new construction. Any reinforcement bars that are damaged during concrete removal shall be replaced with an approved bar splicer or anchorage system. Cost included with Concrete Removal.
 Attach new name plate to the backside of 8" Rail element. Existing name plate is to be removed, cleaned and relocated adjacent to new name plate. Cost included in the cost of Name Plates.
 All structural steel embedded in the PPC deck beams shall be shop painted with the inorganic zinc rich primer per AASHTO M300, Type 1. Cost included with Furnishing Precast Prestressed Concrete Deck Beams (27" Depth).
 The cut strands at each beam end shall be given two coats of zinc dust spray or paint meeting the requirements of ASTM A780. The zinc dust spray or paint shall be applied before corrosion appears and allowed to dry according to manufacturer's specifications prior to another coat of zinc. A concrete sealer meeting the requirements of Section 587 of the Standard Specifications shall be applied to the exterior face and 9" in on the underside of each fascia beam. The sealer shall be applied after visible crack growth has subsided. This work shall be performed by the producer and included with the cost of the beam.
 The top surface of the beams shall be finished according to the IDOT Manual for Fabrication of Precast Prestressed Concrete Products.
 The Contractor has the option of using used steel. See Special Provisions.
 All structural steel shall conform to AASHTO Classification M-270 Gr. 36, unless otherwise noted.



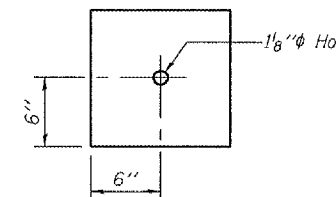
ELEVATION



PLAN



SECTION



CLAMPING PLATE

Notes:
 See Special Provisions for Stage Construction
 Precast Prestressed Concrete Deck Beams.
 See Stage Construction Detail for Traffic Lane.
 Cost is included with Erecting Precast Prestressed Concrete Deck Beams.

LOADING HS20-44

DESIGN SPECIFICATIONS
 2002 AASHTO Standard Specifications

DESIGN STRESSES

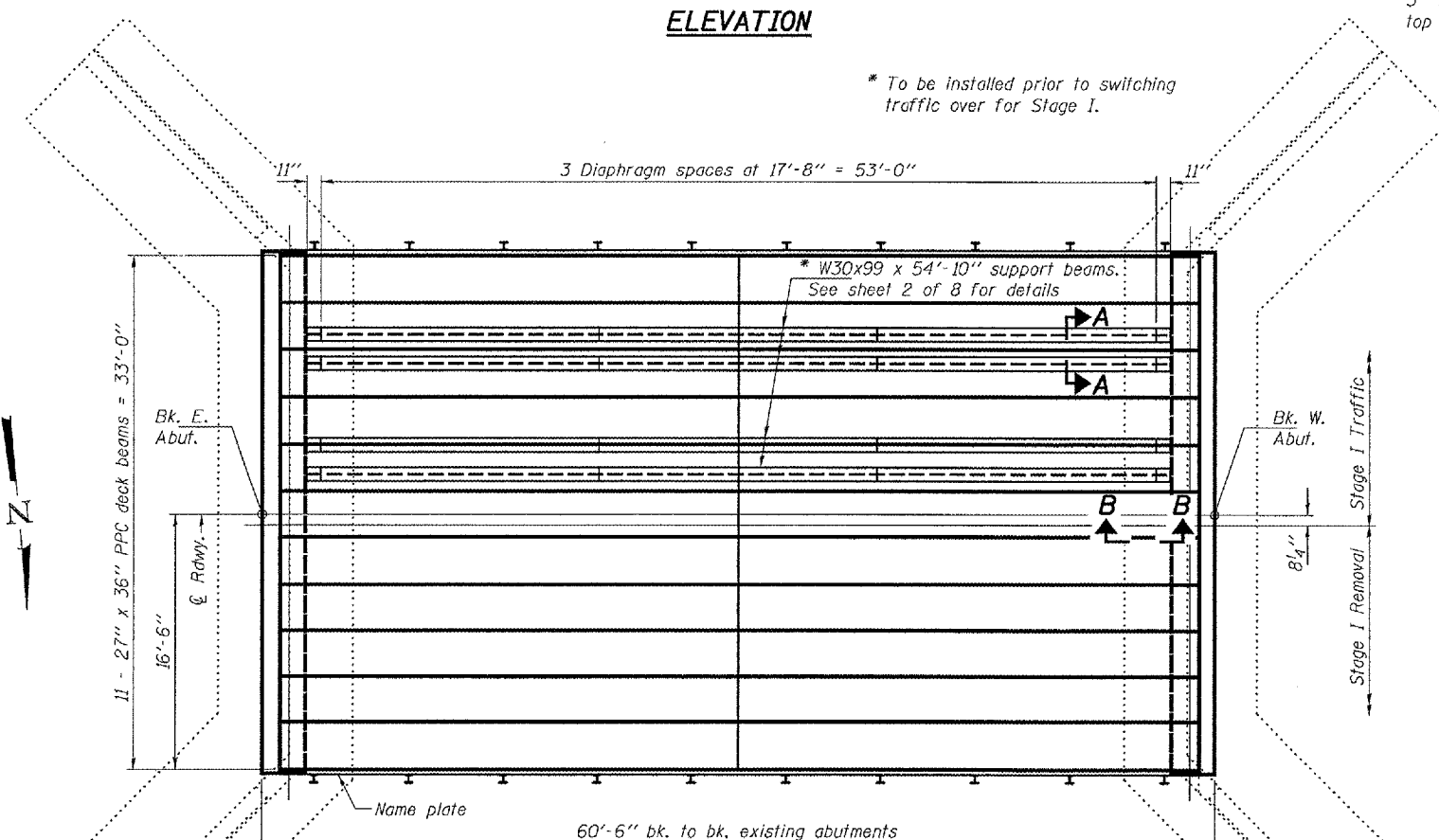
FIELD UNITS
 $f'_c = 3,500$ psi
 $f_y = 60,000$ psi (Reinforcement)
PRECAST PRESTRESSED UNITS
 $f'_c = 5,000$ psi
 $f'_{ci} = 4,000$ psi
 $f'_s = 270,000$ psi ($1/2$ " low lax strands)
 $f'_{si} = 201,960$ psi ($1/2$ " low lax strands)

TOTAL BILL OF MATERIAL

ITEM	UNIT	SUPER	SUB	TOTAL
▲ Concrete Removal	Cu. Yd.	6.8		6.8
▲ Concrete Structures	Cu. Yd.		9.6	9.6
▲ Concrete Superstructure	Cu. Yd.	4.8		4.8
▲ Name Plates	Each	1		1
Furnishing Precast Prestressed Concrete Deck Beams (27" Depth)	Sq. Ft.	1927		1927
▲ Reinforcement Bars, Epoxy Coated	Pound		1680	1680
▲ Removal of Existing Superstructures	Each	1		1
▲ Steel Railing, Type SM	Foot	121		121
▲ Waterproofing Membrane System	Sq. Yd.	214		214
Furnishing Structural Steel	Pound		26060	26060
▲ Silicone Joint Sealer	Foot	33		33
▲ Hot-Mix Asphalt Surface Course, Mix "C", NSO	Tons	36		36
▲ Polymer Concrete	Cu. Ft.	1.2		1.2
▲ PC Mortar Fairing Course	Foot	584		584
▲ Bar Splicers	Each	8	8	16

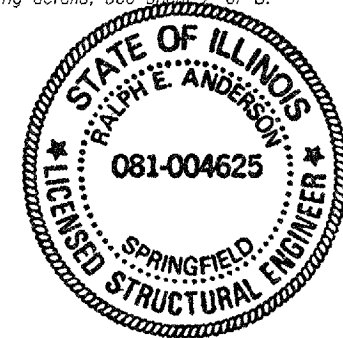
▲ For Information Only

PLAN AND ELEVATION
IL. 97 OVER PRAIRIE CREEK
SANGAMON COUNTY
SN 084-0046



PLAN

For SECTIONS A-A & B-B & staging details, see sheet 2 of 8.



STATION 270+33
 REBUILT 2008 BY
 STATE OF ILLINOIS
 LOADING HS20
 STRUCTURE NO. 084-0046

NAME PLATE
 See Std. 515001

DESIGNED: Victor H. Veliz
 CHECKED: Adrian T. Hallaway
 DRAWN: baliva
 CHECKED: VHV ATIT
 EXAMINED: [Signature]
 PASSED: [Signature]
 JANUARY 22, 2008
 ENGINEER OF STRUCTURAL SERVICES
 ENGINEER OF BRIDGES AND STRUCTURES

EXPIRES 11-30-2008