

STATE

100%

1000

TOTAL

TOTAL

PAY CODE

ITEM DESCRIPTION

UNIT

PAY CODE	ITEM DESCRIPTION	UNIT	TOTAL	TOTAL
67100100	MOBILIZATION	LSUM	1.0	1.0
70102635	TRAFFIC CONTROL AND PROTECTION, STANDARD 701701	LSUM	1.0	1.0
78000300	THERMOPLASTIC PAVEMENT MARKING - LINE 5"	FOOT	2,580.0	2,580.0
78000400	THERMOPLASTIC PAVEMENT MARKING - LINE 6"	FOOT	944.0	944.0
78000500	THERMOPLASTIC PAVEMENT MARKING - LINE 8"	FOOT	510.0	510.0
78000600	THERMOPLASTIC PAVEMENT MARKING - LINE 12"	FOOT	906.0	906.0
78003100	PREFORMED PLASTIC PAVEMENT MARKING, TYPE B - LETTERS <sup>AND</sup> SYMBOLS	SQ FT	156.0	156.0
78003180	PREFORMED PLASTIC PAVEMENT MARKING, TYPE B - LINE 24"	FOOT	89.0	89.0
* 78100100	RAISED REFLECTOR PAVEMENT MARKER	EACH	65.0	65.0
78300200	RAISED REFLECTOR PAVEMENT MARKER REMOVAL	EACH	27.0	27.0
78300400	THERMOPLASTIC PAVEMENT MARKING REMOVAL	SQ FT	1,957.0	1,957.0
<u>X0322050</u>	<u>RAISED REFLECTIVE PAVEMENT MARKER, REFLECTOR REMOVAL</u>	<u>EACH</u>	<u>10</u>	<u>10</u>



\* SPECIALTY ITEMS

Rev. 2-27-08

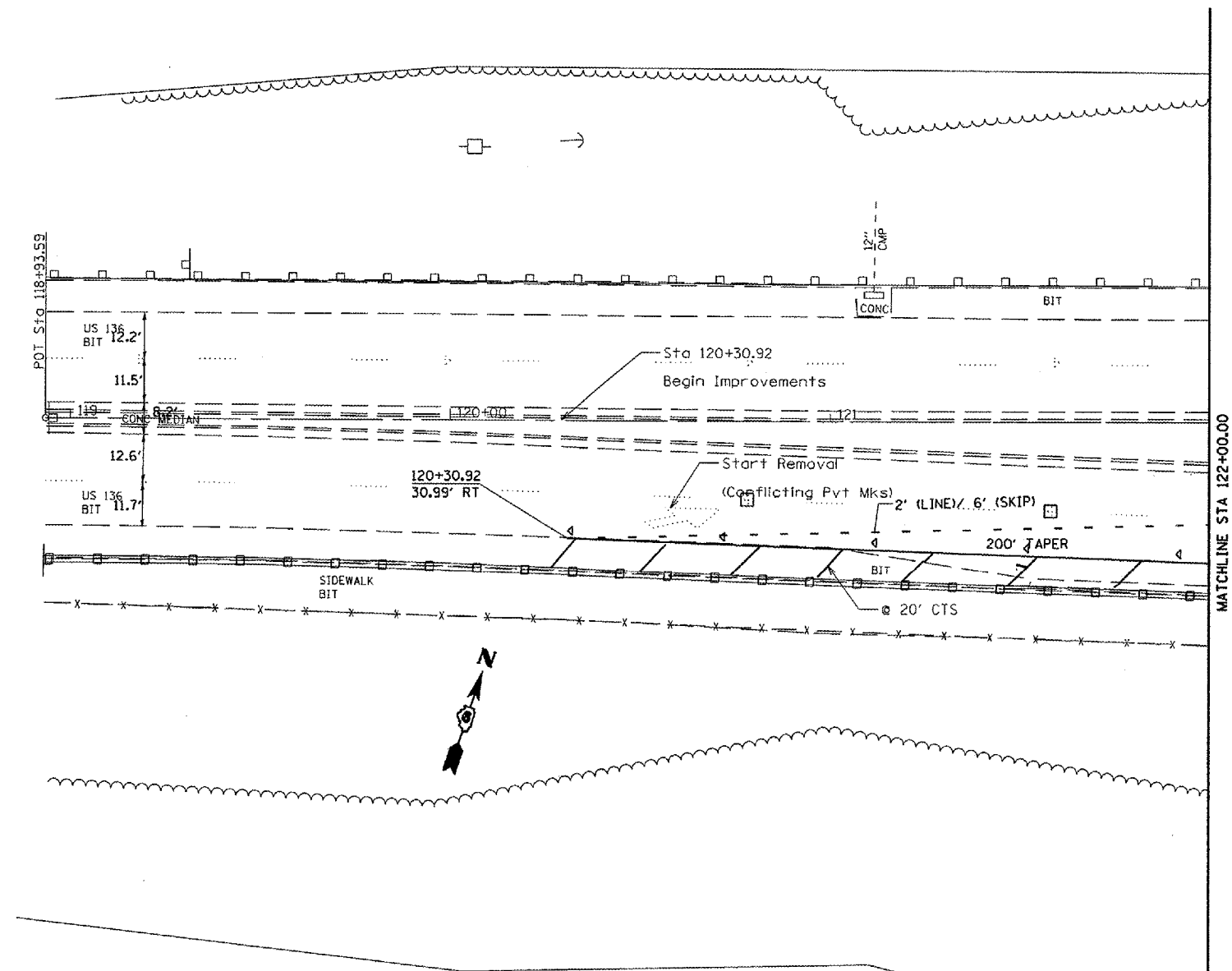
FILE NAME = c:\projects\683468\shisoq.dgn	USER NAME = laughlinr1	DESIGNED -	REVISED -
		DRAWN -	REVISED -
		CHECKED -	REVISED -
		DATE -	REVISED -

STATE OF ILLINOIS  
DEPARTMENT OF TRANSPORTATION

SUMMARY OF QUANTITIES

SCALE: SHEET NO. 3 OF 9 SHEETS STA. TO STA.

F.A.P. RTE. 315	SECTION (23, 29, 30)	COUNTY HANCOCK	TOTAL SHEETS 9	SHEET NO. 3
FED. ROAD DIST. NO. ILLINOIS FED. AID PROJECT			CONTRACT NO. 72B74	



- SYMBOLS**
- ▶ One-way amber marker
  - ▷ One-way crystal marker
  - ◆ Two-way amber marker
  - ◻ Complete removal
  - ◉ Reflector removal only

*Rev. Sheet 2-27-08*

FILE NAME = c:\projects\4683480\shp\planb001.dgn	USER NAME = laughtlne1	DESIGNED -	REVISED -
		DRAWN -	REVISED -
		CHECKED -	REVISED -
		DATE -	REVISED -

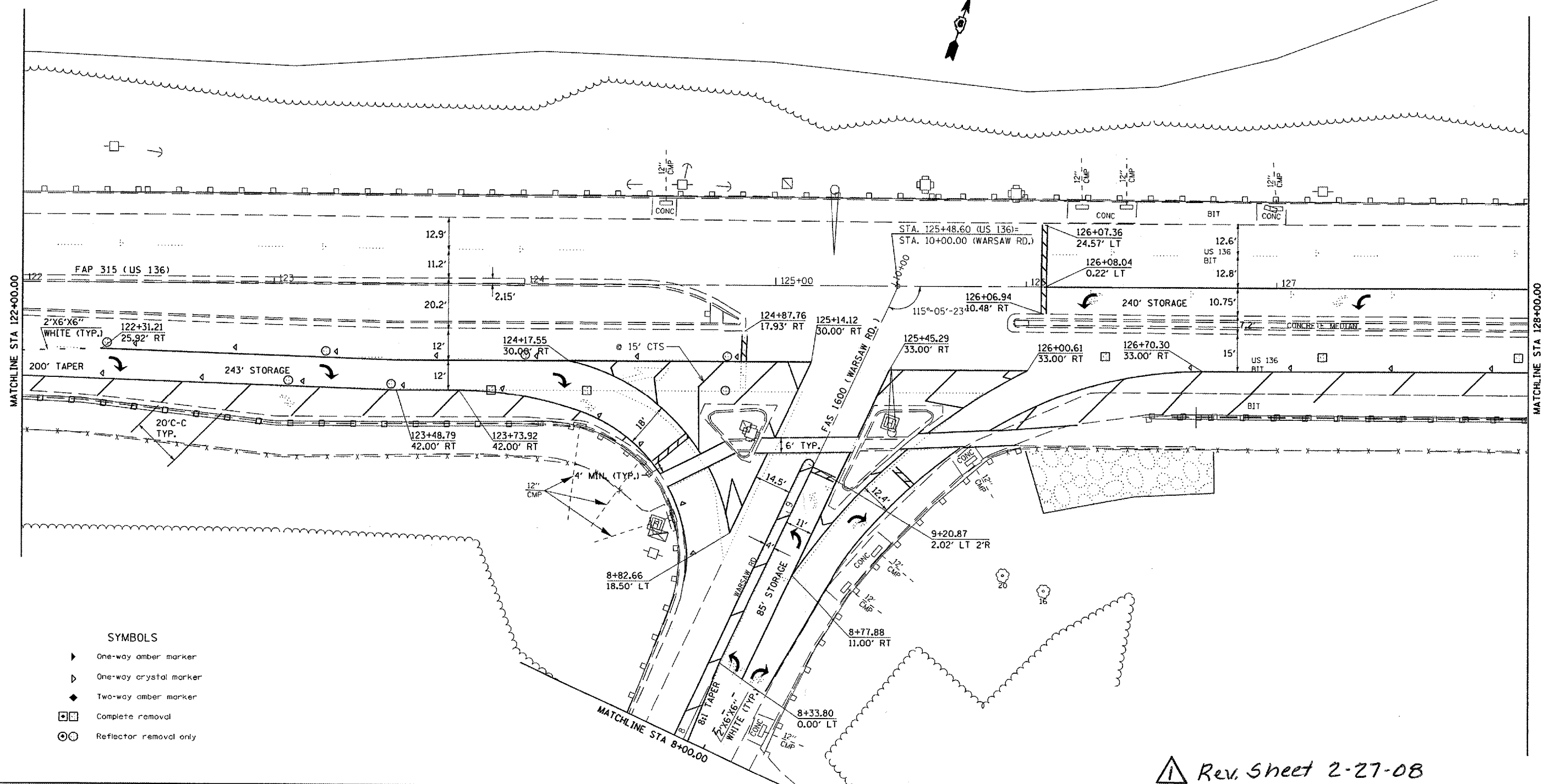
**STATE OF ILLINOIS  
DEPARTMENT OF TRANSPORTATION**

**PLAN VIEW**

SCALE: SHEET NO. 5 OF 9 SHEETS STA. 118+93.59 TO STA. 122+00.00

F.A.P. RTE. 315	SECTION (23,29,30)I	COUNTY HANCOCK	TOTAL SHEETS 9	SHEET NO. 5
FED. ROAD DIST. NO. ILLINOIS FED. AID PROJECT				

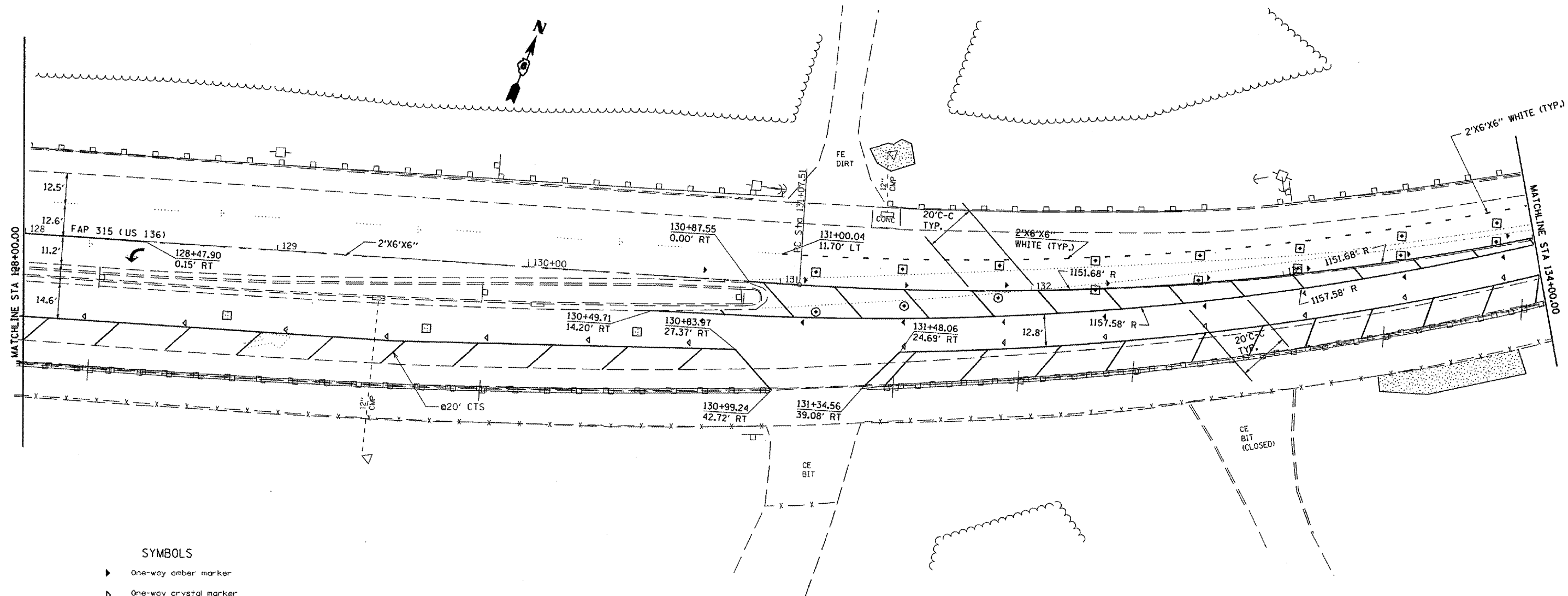
CONTRACT NO. 72B74



- SYMBOLS**
- ▶ One-way amber marker
  - ▷ One-way crystal marker
  - ◆ Two-way amber marker
  - ◻ Complete removal
  - ⊙ Reflector removal only

▲ Rev. Sheet 2-27-08

FILE NAME = c:\projects\td603408\shp\planb001.dgn	USER NAME = laughlinr	DESIGNED -	REVISED -	<b>STATE OF ILLINOIS DEPARTMENT OF TRANSPORTATION</b>	<b>PLAN VIEW</b>	F.A.P. RTE.	SECTION	COUNTY	TOTAL SHEETS	SHEET NO.
	PLOT SCALE = 40,0000 1/4 IN.	DRAWN -	REVISED -			315	(23,29,30)I	HANCOCK	9	6
	PLOT DATE = Feb-27-2008 07:16:26AM	CHECKED -	REVISED -			CONTRACT NO. 72B74				
				SCALE: SHEET NO. 6 OF 9 SHEETS STA. 122+00.00 TO STA. 128+00.00		FED. ROAD DIST. NO. ILLINOIS FED. AID PROJECT				

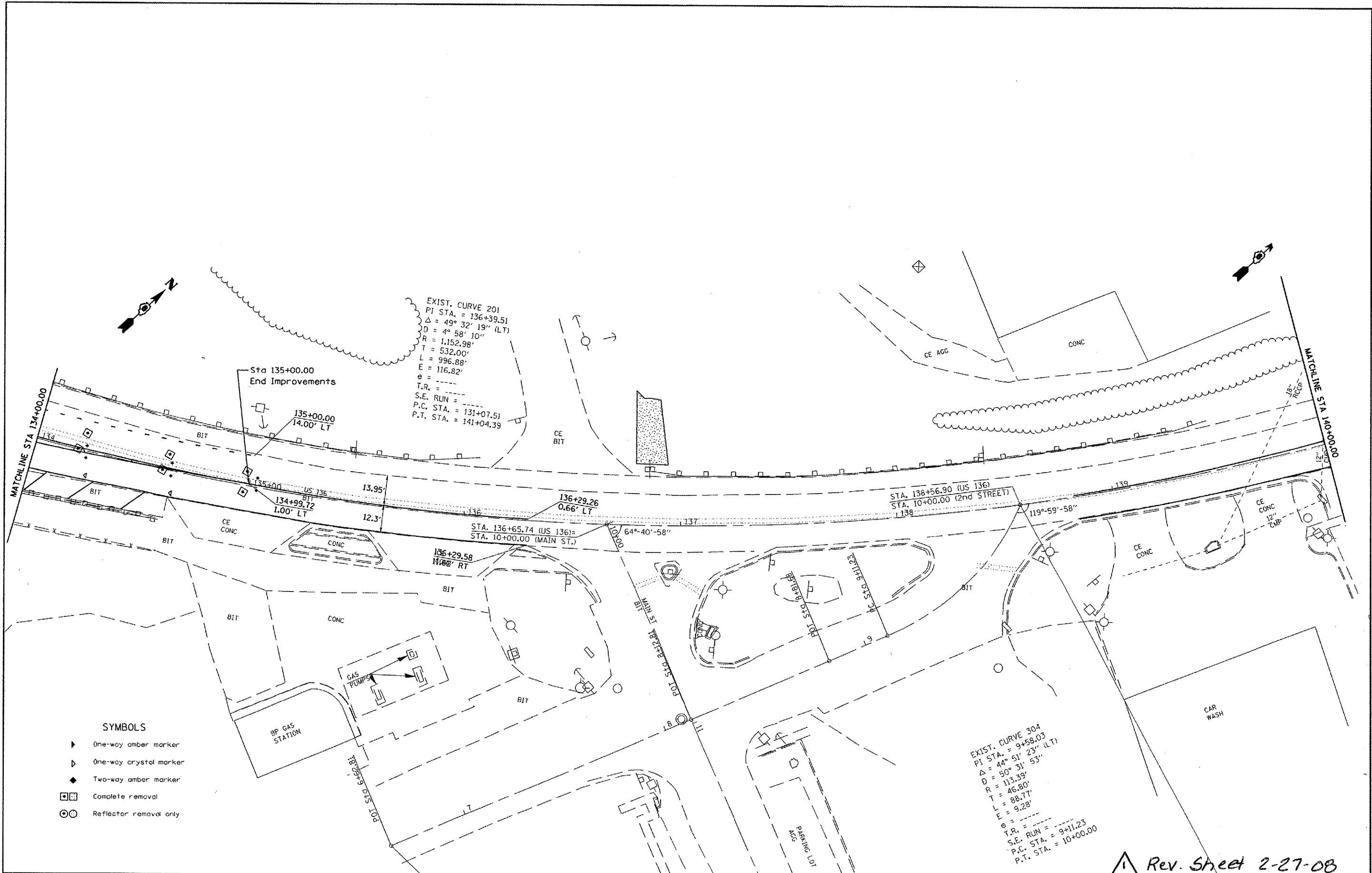


**SYMBOLS**

- ▶ One-way amber marker
- ▷ One-way crystal marker
- ◆ Two-way amber marker
- ◻ Complete removal
- ⊙ Reflector removal only

▲ Rev. Sheet 2-27-08

FILE NAME = c:\projects\4683488\vt\planb001.dgn	USER NAME = laughlin-l	DESIGNED -	REVISED -	<b>STATE OF ILLINOIS DEPARTMENT OF TRANSPORTATION</b>	<b>PLAN VIEW</b>		F.A.P. RTE. 315	SECTION (23,29,30)	COUNTY HANCOCK	TOTAL SHEETS 9	SHEET NO. 7	
					SCALE:	SHEET NO. 7 OF 9 SHEETS	STA. 128+00.00 TO STA. 134+00.00	CONTRACT NO. 72874				
					FED. ROAD DIST. NO. [ILLINOIS] FED. AID PROJECT							



**SYMBOLS**

- ▶ One-way amber marker
- ▷ One-way crystal marker
- ◆ Two-way amber marker
- ⊠ Complete removal
- ⊙ Reflector removal only

▲ Rev. Sheet 2-27-08

FILE NAME = c:\projects\1603408\sh\planb01.dgn	USER NAME = laughlin-l	DESIGNED -	REVISED -
		DRAWN -	REVISED -
		CHECKED -	REVISED -
		DATE -	REVISED -

**STATE OF ILLINOIS  
DEPARTMENT OF TRANSPORTATION**

**PLAN VIEW**

SCALE: SHEET NO. 8 OF 9 SHEETS STA. 134+00.00 TO STA. 140+00.00

F.A.P. RTE.	SECTION	COUNTY	TOTAL SHEETS	SHEET NO.
315	(23,29,30)	HANCOCK	9	8
FED. ROAD DIST. NO.			ILLINOIS FED. AID PROJECT	
			CONTRACT NO. 72B74	