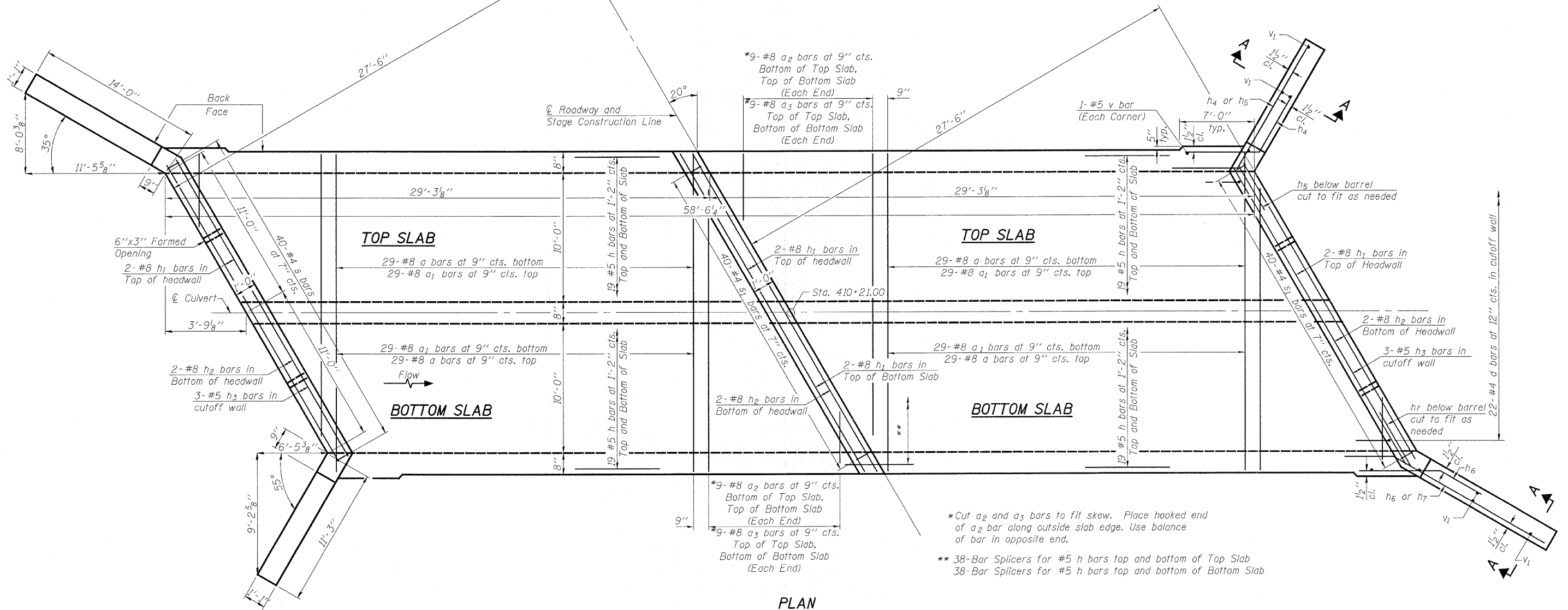


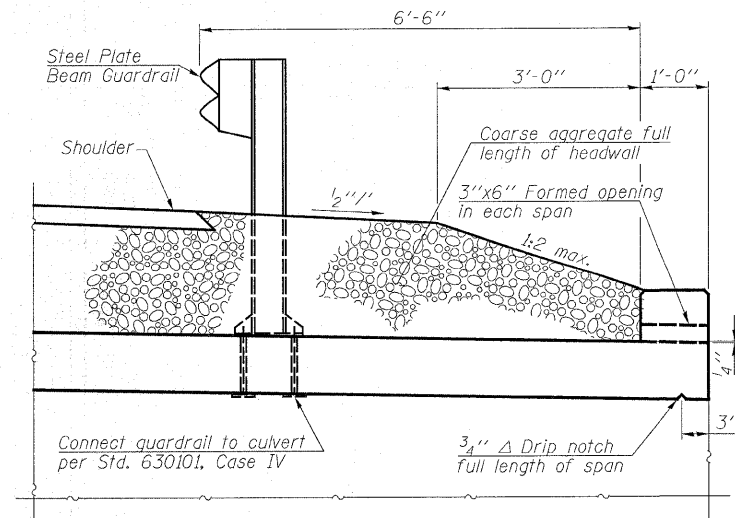
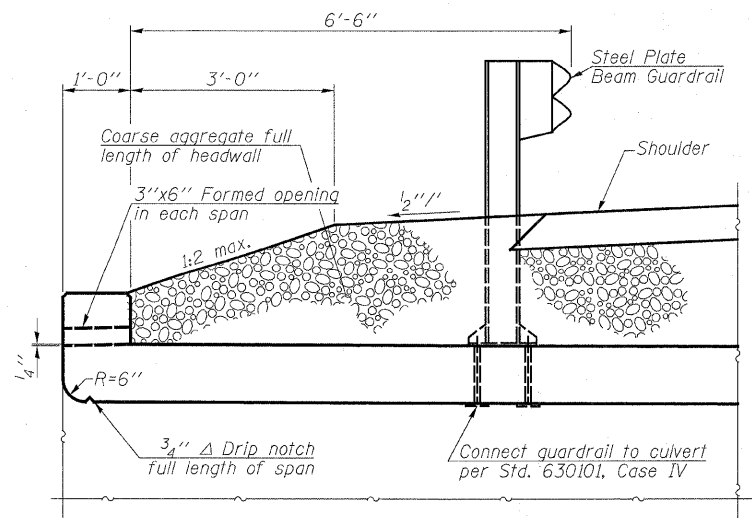
STATE OF ILLINOIS  
DEPARTMENT OF TRANSPORTATION

ROUTE NO.	SECTION	COUNTY	TOTAL SHEETS	SHEET NO.	SHEET NO. 5
F.A.P. 328	10BR-3B-1	WAYNE	140	73	10 SHEETS
FED. ROAD DIST. NO. 7	ILLINOIS	FED. AID PROJECT			

Contract #74040



PLAN



Notes:  
 A distance of half the length of the wingwall but not less than six feet of the barrel shall be poured monolithically with the wingwalls.  
 See sheet 6 of 10 for Elevation, Details, and Section A-A.  
 Coarse aggregate is to be placed by Grading Contractor. Cost included with Concrete Box Culverts.

DESIGNED	JJD
CHECKED	KLH
DRAWN	JJD
CHECKED	NJM

**HORNER & SHIFRIN, INC.**  
ENGINEERS

**CULVERT PLAN**  
 F.A.P. ROUTE 328 - SECTION (10BR-3)B-1  
 WAYNE COUNTY  
 STATION 410+21.00  
 STRUCTURE NO. 096-2010