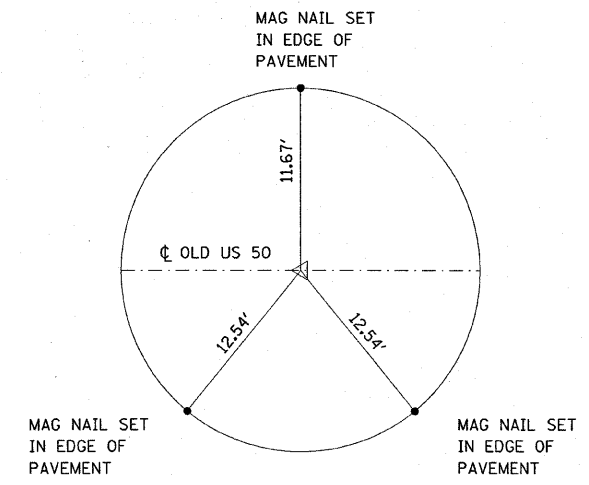
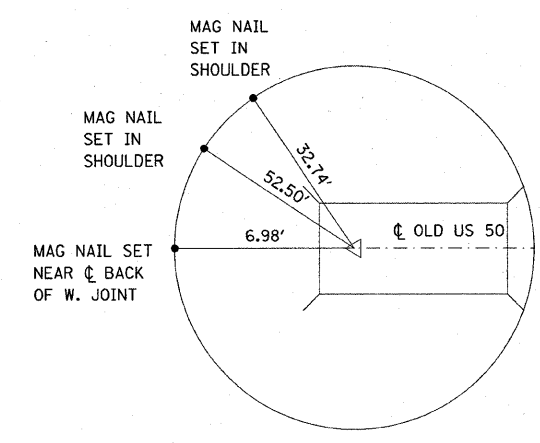


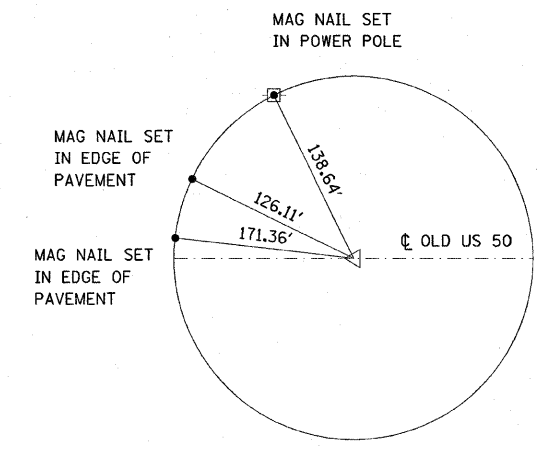
F.A.S. RTE.	SECTION	COUNTY	TOTAL SHEETS	SHEET NO.
1780	27-1BR-1	CLINTON	69	8
STA.		TO STA.		
FED. ROAD DIST. NO.		ILLINOIS FED. AID PROJECT		



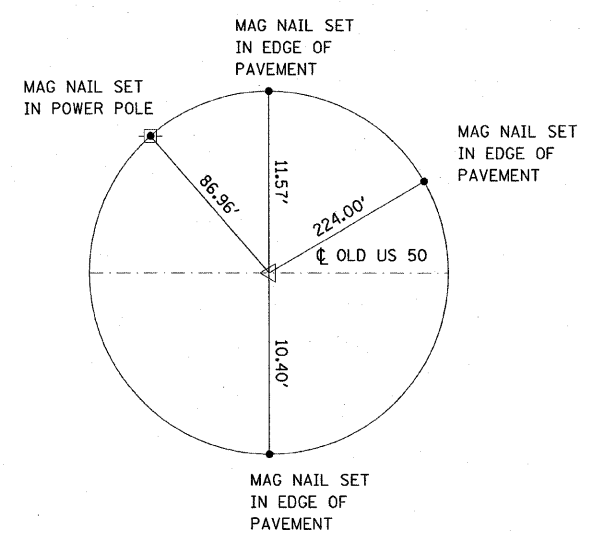
TIE POINT
MAG NAIL
STA 374+99.70



TIE POINT
MAG NAIL
STA 386+70.74



TIE POINT
MAG NAIL
STA 392+05.97



TIE POINT
MAG NAIL
STA 674+00

TEMPORARY BENCHMARK

TBM 13 - CHISELED SQUARE ON N.W. ABUTMENT
STA. 386+75
OFFSET = 16.7' RT
ELEV = 446.40

NOTE: ALL TIES PULLED DIRECT

REVISIONS	
NAME	DATE

ILLINOIS DEPARTMENT OF TRANSPORTATION
TIE POINTS AND BENCHMARKS
FAS ROUTE 1780
SECTION 27-1BR-1
CLINTON COUNTY
SN 014-0030 (E) 0077 (P)

PLOT DATE = #DATE#
FILE NAME = #FILE#
PLOT SCALE = #SCALE#
REFERENCE = #REF#