

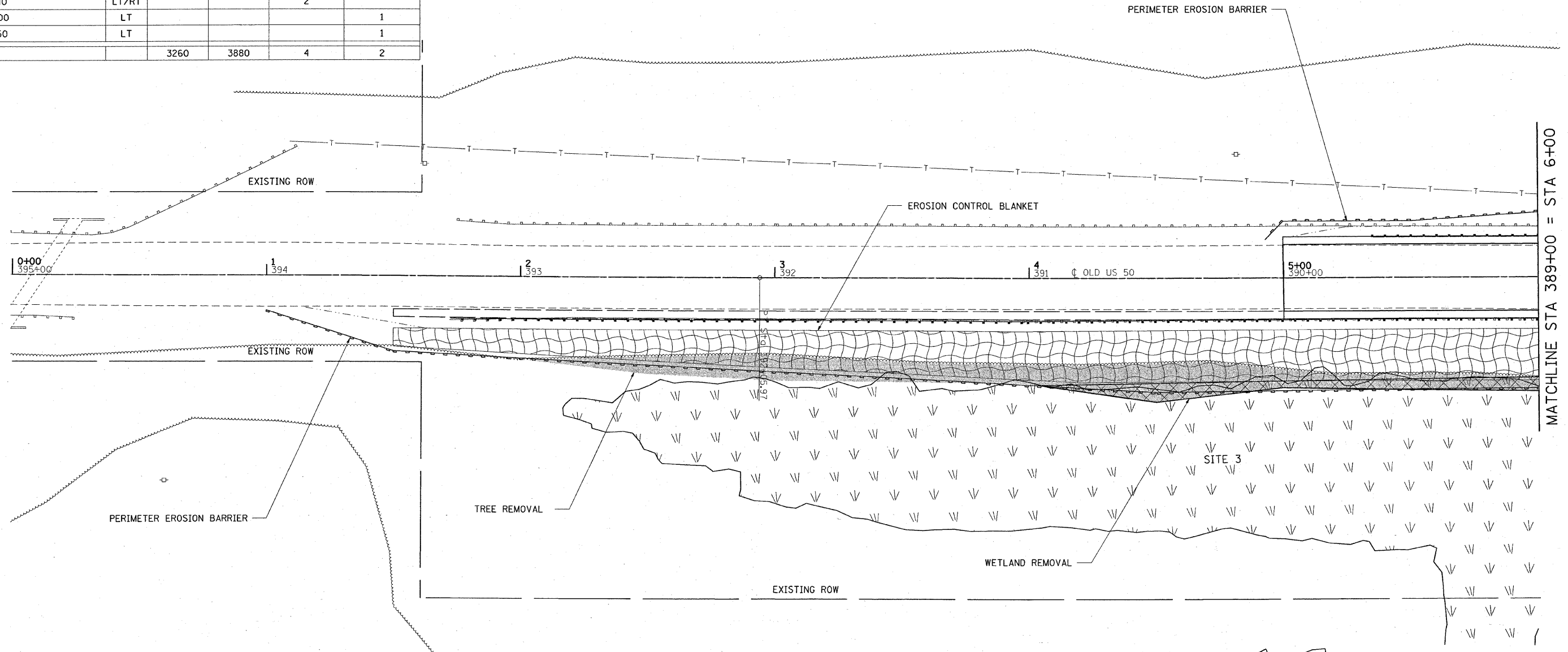
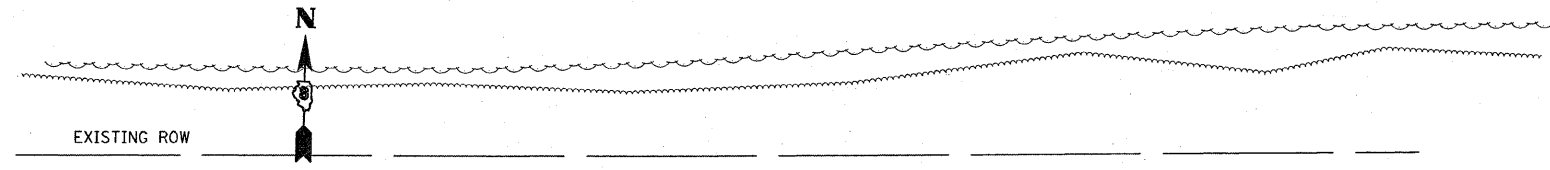
F.A.S. RTE.	SECTION	COUNTY	TOTAL SHEETS	SHEET NO.
1780	27-1BR-1	CLINTON	69	16
STA. 0+00		TO STA. 6+00		
FED. ROAD DIST. NO.	ILLINOIS	FED. AID PROJECT		

EROSION CONTROL SCHEDULE

LOCATION		RIGHT OR LEFT	PERIMETER EROSION BARRIER FOOT	EROSION CONTROL BLANKET SQ YD	INLET AND PIPE PROTECTION EACH	TEMPORARY DITCH CHECKS EACH
STATION	TO STATION					
STA 1+00	TO STA 7+29	RT	652.3	1091.1		
STA 4+93	TO STA 7+28	LT	254.0			
STA 11+00	TO STA 23+82	RT	1309.9	2788.9		
STA 11+00	TO STA 17+51	LT	668.2			
STA 17+51	TO STA 21+00	LT	375.6			
STA 6+90		LT/RT			2	
STA 11+40		LT/RT			2	
STA 20+00		LT				1
STA 21+50		LT				1
TOTAL			3260	3880	4	2

TREE REMOVAL SCHEDULE

LOCATION			RIGHT OR LEFT	TREE REMOVAL ACRE
STATION	TO	STATION		
2+07.9	TO	7+19.2	RT	0.097
10+67.7	TO	13+89.3	RT	0.078
15+74.7	TO	17+45.0	RT	0.037
18+33.9	TO	20+09.8	RT	0.038
TOTAL				0.25

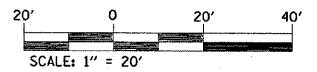


EARTHWORK SCHEDULE

LOCATION		EARTH EXCAVATION CU YD	EARTH EXCAVATION ADJUSTED FOR SHRINKAGE (25%) CU YD	EMBANKMENT CU YD	EARTHWORK BALANCE WASTE (+) OR SHORTAGE (-) CU YD
STATION	TO STATION				
STA 1+50	TO STA 7+31	20.4	15.3	735.1	-719.8
STRUCTURE					
STA 10+98	TO STA 23+50	214.6	161.0	4476.2	-4315.2
SUBTOTAL		235	176	5211	-5035

WETLANDS: SITE 1 - 22' SOUTH OF OLD US 50, 55' WEST OF SUGAR CREEK (0.089 ACRE)
 SITE 3 - 37' SOUTH OF OLD US 50, 255' WEST OF SUGAR CREEK (0.605 ACRE)
 SITE 4 - 145' SOUTH OF OLD US 50, 480' WEST OF SUGAR CREEK (0.058 ACRE)
 SITE 5 - 58' SOUTH OF OLD US 50, 250' EAST OF SUGAR CREEK (0.014 ACRE)

THE WETLAND SHAPES SHOWN ARE APPROXIMATE IN SHAPE AND LOCATION. THESE AREAS WILL BE STAKED PRIOR TO CONSTRUCTION.



REVISIONS	
NAME	DATE

ILLINOIS DEPARTMENT OF TRANSPORTATION

EROSION CONTROL SHEETS

FAS ROUTE 1780
 SECTION 27-BR-1
 CLINTON COUNTY
 SN 014-0030 (E) 0077 (P)