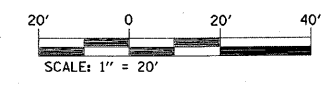
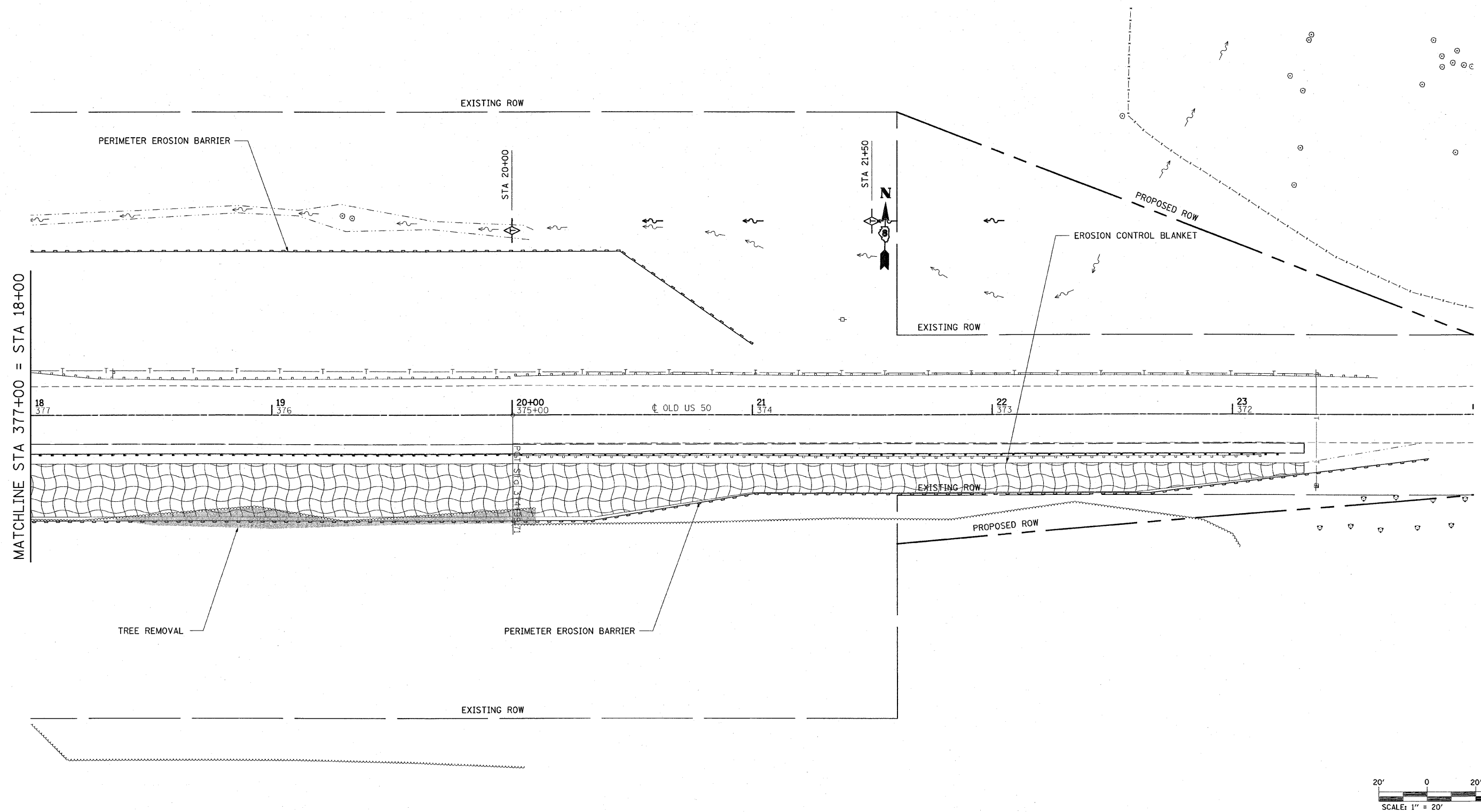


F.A.S. RTE.	SECTION	COUNTY	TOTAL SHEETS	SHEET NO.
1780	27-IBR-1	CLINTON	69	19
STA. 0+00		TO STA. 6+00		
FED. ROAD DIST. NO.	ILLINOIS FED. AID PROJECT			



PLOT DATE = #DATE#
 FILE NAME = #FILE#
 PLOT SCALE = #SCALE#
 REFERENCE = #REF#

REVISIONS	
NAME	DATE

ILLINOIS DEPARTMENT OF TRANSPORTATION

EROSION CONTROL SHEETS

FAS ROUTE 1780
 SECTION 27-BR-1
 CLINTON COUNTY
 SN 014-0030 (E) 0077 (P)