

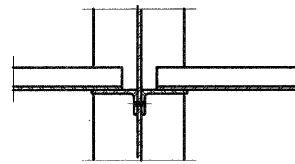
12/14/2007 11:59:37 AM

E:\02files\020409\02-0409.028 wo 17 bridge plans\bridge plans\014-0077_14-StructuralSteelDetails.dgn

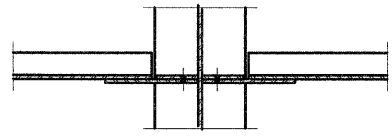
ROUTE NO.	SECTION	COUNTY	TOTAL SHEETS	SHEET NO.
F.A.S. 1780	27-1BR-1	CLINTON	69	39
FED. ROAD DIST. NO. B	ELLINGS	FED. AID PROJECT-		

Contract # 76961

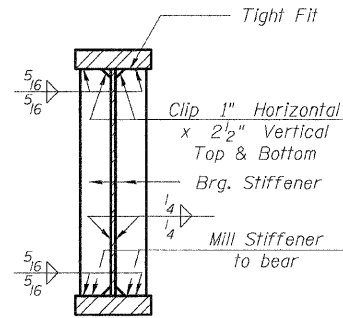
SHEET NO. 14
27 SHEETS



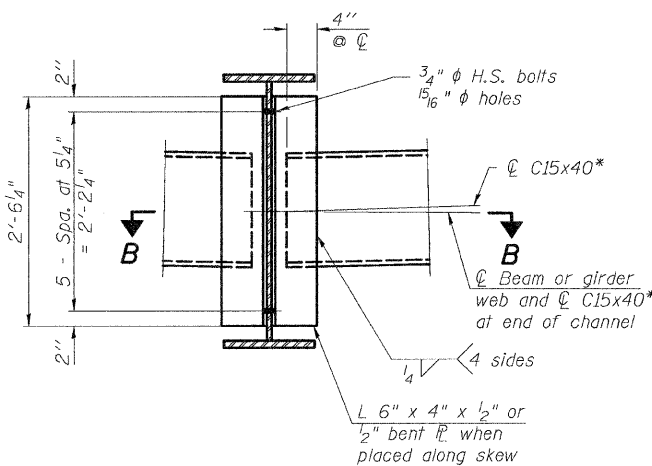
SECTION B-B



SECTION C-C



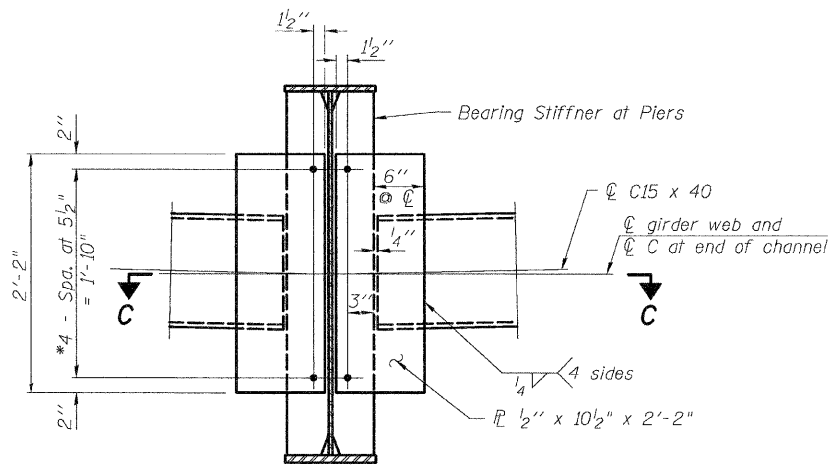
SECTION AT PIER



INTERIOR DIAPHRAGM, D1
(65 Required)

Note:
Two hardened washers required for each set of oversized holes.

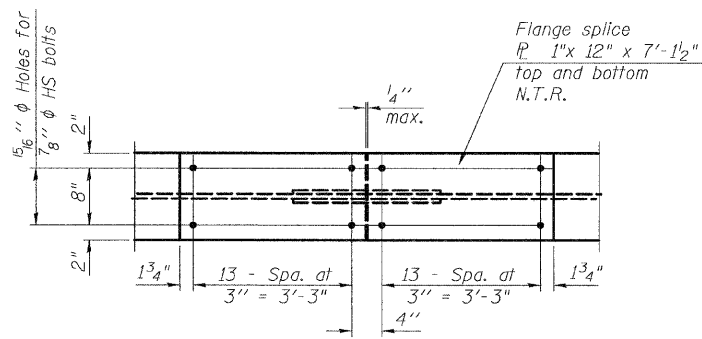
* Alternate channels are permitted to facilitate material acquisition. Calculated weight of structural steel is based on the lighter section.



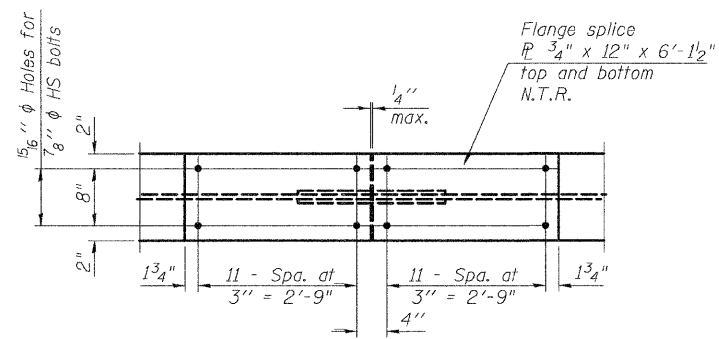
INTERIOR DIAPHRAGM, D2
(20 Required)

Note:
Two hardened washers required for each set of oversized holes.

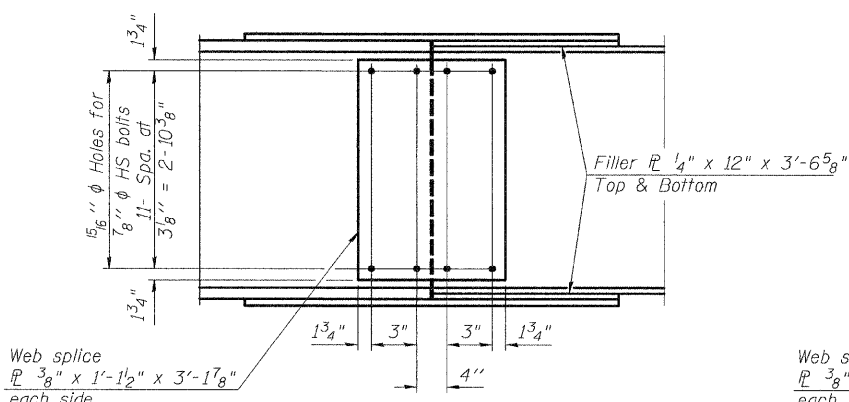
* 3/4" φ HS bolts, 15/16" φ holes



PLAN

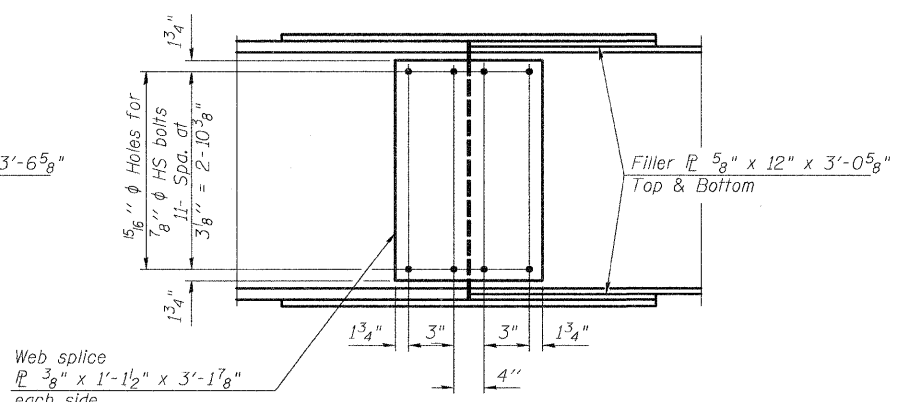


PLAN



ELEVATION

SPLICE #1 & #4 DETAIL
(12 Required)



ELEVATION

SPLICE #2 & #3 DETAIL
(12 Required)

DESIGNED	ADL
CHECKED	WLW
DRAWN	BGJ
CHECKED	WLW

STRUCTURAL STEEL DETAILS
FAS RTE 1780 (OLD US 50) OVER
SUGAR CREEK
SECTION 27-1BR-1
CLINTON COUNTY
STATION 9+14.50
STRUCTURE NUMBER 014-0077

Klingner & Assoc., P.C.