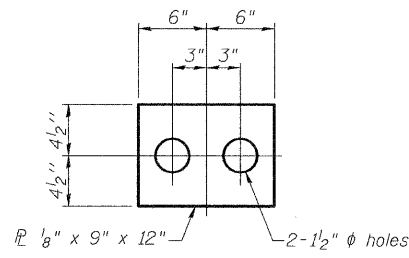
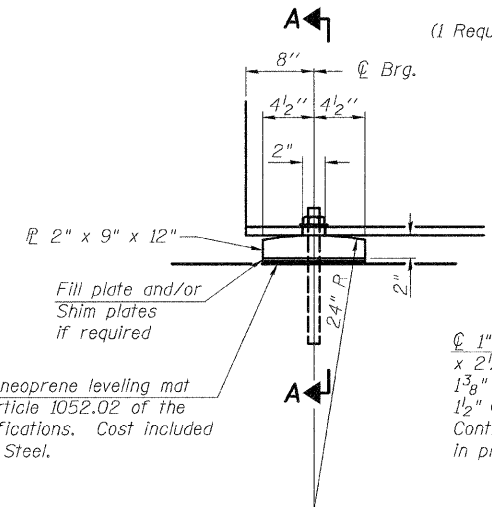


12/14/2007 11:59:38 AM

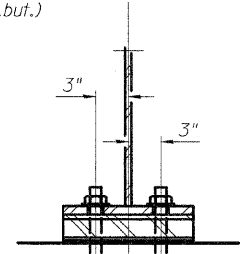
P:\02files\020409\02-0409.028 wo 17 bridge plans\bridge plans\014-0077\_16\_BearingDetails.dgn



**FILL PLATE**  
(1 Required at Girder #4 W. Abut.)



**ELEVATION AT ABUTMENT**



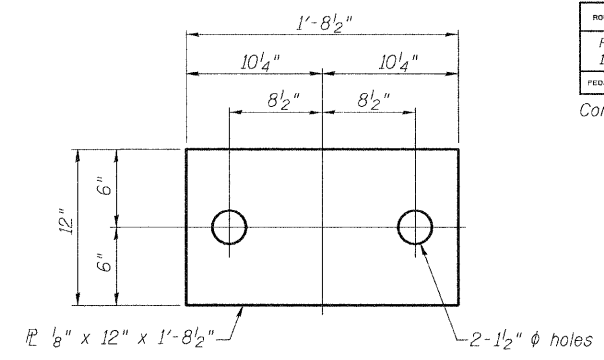
**SECTION A-A**

1"  $\phi$  x 12" anchor bolts with 2 1/4" x 2 1/4" x 5/16"  $\mathbb{P}$  washer under nut.  
1 3/8" x 2" slotted hole in flange.  
1 1/2"  $\phi$  holes in bearing plate.  
Contractor has the option of cast in place or drilled installation.

1/8" elastomeric neoprene leveling mat according to Article 1052.02 of the Standard Specifications. Cost included with Structural Steel.

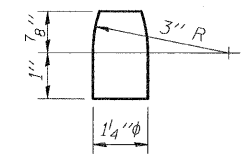
**FIXED BEARING AT ABUTMENT**

Notes:  
Anchor bolts shall be ASTM F1554 all-thread (or an Engineer-approved alternate material) of the grade(s) and diameter(s) specified. ASTM A307 Grade C anchor bolts may be used in lieu of ASTM F1554 Grade 36 (Fy=36ksi). The corresponding specified grade of AASHTO M314 anchor bolts may be used in lieu of ASTM F1554.  
Anchor bolts at fixed bearings may be either cast in place or installed in holes drilled after the supported member is in place.  
Drilled and set anchor bolts shall be installed according to Article 521.06 of the Standard Specifications.

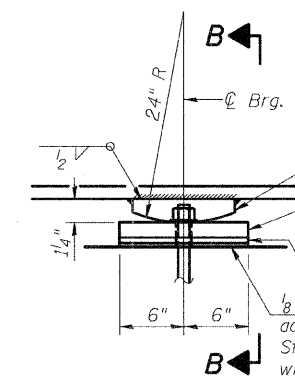


**FILL PLATE**  
(2 Required)

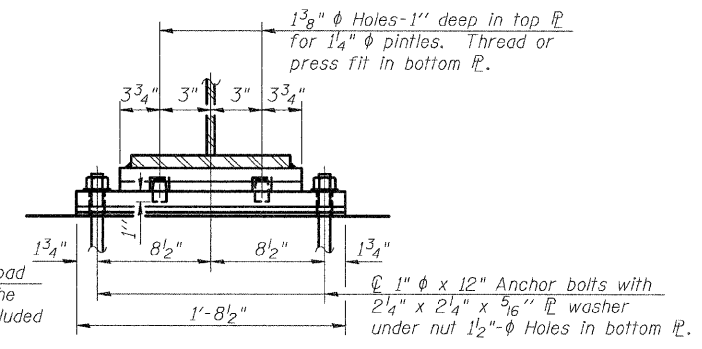
Notes:  
Use under following girder at following location  
Pier #1 - Girder 4,  
Pier #4 - Girder 4  
as shown in Fixed Bearing Details



**PINTLE**



**ELEVATION AT PIERS**



**SECTION B-B**

**FIXED BEARING AT PIER**

**BILL OF MATERIAL**

Item	Unit	Total
Anchor Bolts 1" $\phi$	Each	72

**BEARING DETAILS**  
FAS RTE 1780 (OLD US 50) OVER  
SUGAR CREEK  
SECTION 27-1BR-1  
CLINTON COUNTY  
STATION 9+14.50  
STRUCTURE NUMBER 014-0077

Klingner & Assoc., P.C.

DESIGNED	ADL
CHECKED	WLW
DRAWN	BGJ
CHECKED	WLW

ROUTE NO.	SECTION	COUNTY	TOTAL SHEETS	SHEET NO.	SHEET NO.
F.A.S. 1780	27-1BR-1	CLINTON	69	41	27 SHEETS
FED. ROAD DIST. NO. 8	ILLINOIS	FED. AID PROJECT-			

Contract # 76961