

12/14/2007 11:59:42 AM  
 p:\02files\020409\02-0409\028 wo 17 bridge plans\bridge plans\014-0077 23 Pier4.dgn

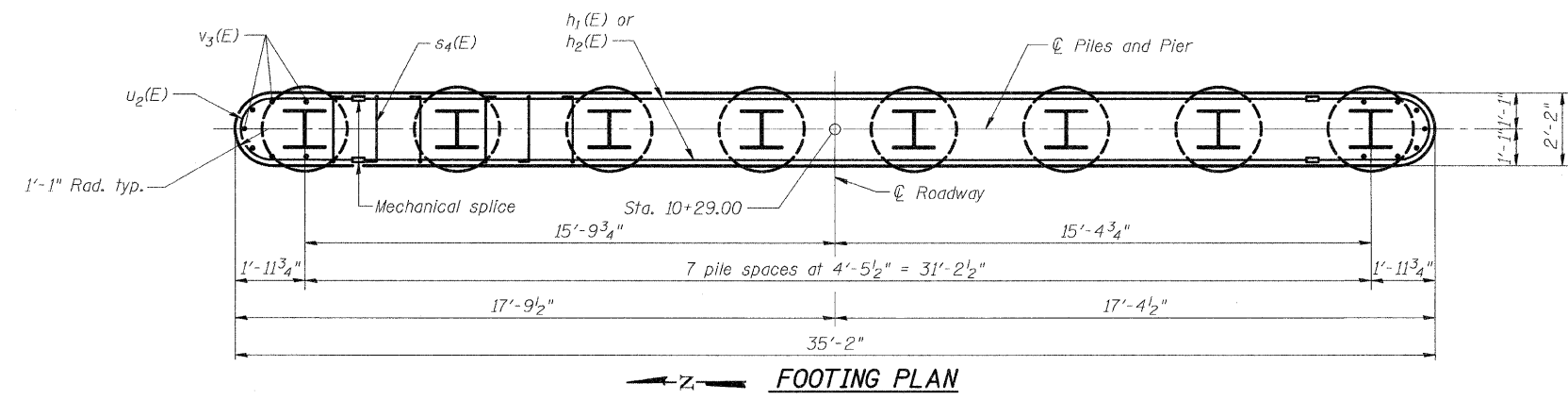
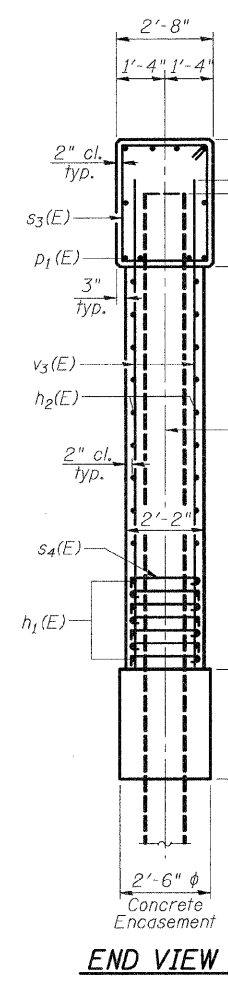
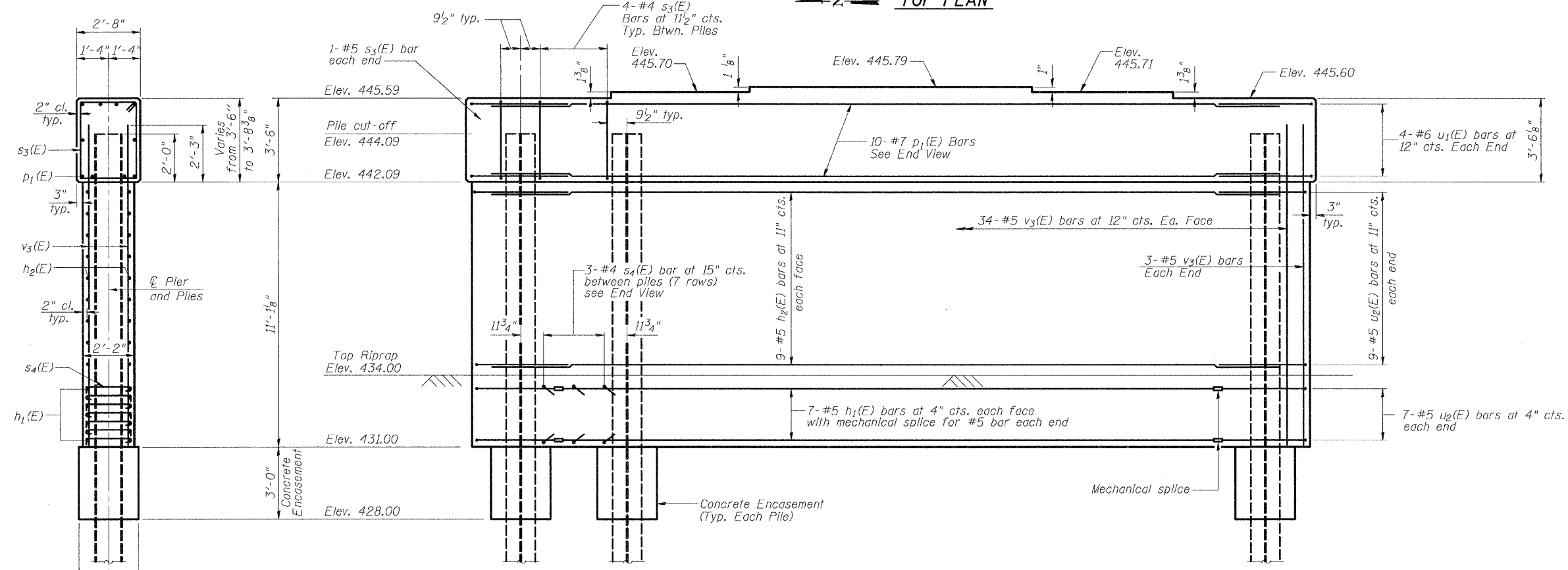
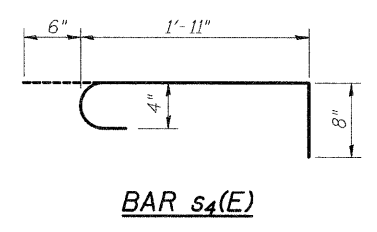
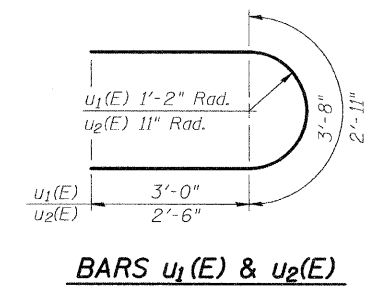
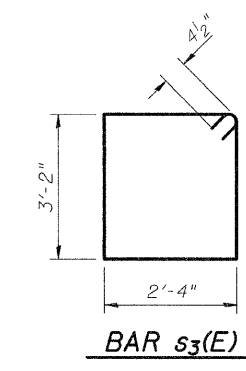
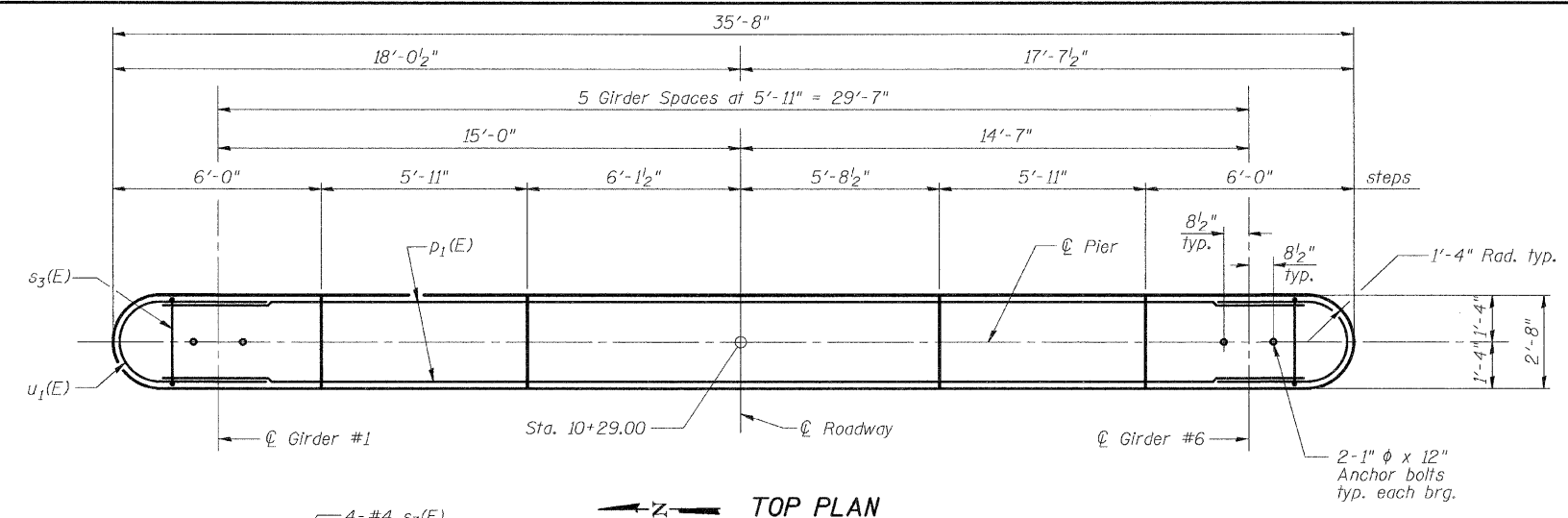
ROUTE NO.	SECTION	COUNTY	TOTL SHEETS	SHEET NO.	SHEET NO. 23 27 SHEETS
F.A.S. 1780	27- 1BR-1	CLINTON	69	48	
FED. ROAD DIST. NO. R		ILLINOIS	FED. AID PROJECT-		

Contract # 76961

Notes:  
 Space reinforcement in cap to miss anchor bolts.  
 Pour steps monolithically with cap.  
 For details of piles, and concrete encasements see sheet 24 of 27.

**PILE DATA**

Type: Steel HP 14x73  
 Nominal Required Bearing: 578 kips  
 Factored Resistance Available: 274 kips  
 Est. Length: 61'-0"  
 No. Production Piles: 7  
 No. Test Piles: 1



**BILL OF MATERIAL**

Bar	No.	Size	Length	Shape	
h <sub>1</sub> (E)	14	#5	28'-0"	—	
h <sub>2</sub> (E)	18	#5	33'-0"	—	
p <sub>1</sub> (E)	10	#7	33'-0"	—	
s <sub>3</sub> (E)	30	#4	11'-9"	□	
s <sub>4</sub> (E)	147	#4	3'-1"	┌	
u <sub>1</sub> (E)	8	#6	9'-8"	U	
u <sub>2</sub> (E)	32	#5	7'-11"	U	
v <sub>3</sub> (E)	74	#5	13'-4"	—	
Concrete Structures				Cu. Yd.	43.4
Reinforcement Bars Epoxy Coated				Pound	3650
Structure Excavation				Cu. Yd.	26
Test Pile Steel HP14x73				Each	1
Furnishing Steel Piles HP14x73				Foot	427
Driving Piles				Foot	427
Mechanical Splice				each	28
Concrete Encasement				Cu. Yd.	4.4

**PIER #4**  
 FAS RTE 1780 (OLD US 50) OVER  
 SUGAR CREEK  
 SECTION 27-1BR-1  
 CLINTON COUNTY  
 STATION 9+14.50  
 STRUCTURE NUMBER 014-0077

DESIGNED	ADL
CHECKED	WLW
DRAWN	BGJ
CHECKED	WLW