

LEGEND

W1-4b-(O)-48
(NO. OF ARROW SHALL MATCH THE NO. OF LANES OPEN TO TRAFFIC AND THE DIRECTION OF TRAVEL.)

W13-1-(O) -24

4' x 8' 1" BORDER WITH 10" CAPITAL LETTERS
BACKGROUND SHEETING SHALL BE THE SAME AS ALL DIAMOND SHAPED CONSTRUCTION SIGNS. (STATE OWNED)

W1-6(O) 7236 ATOP TYPE III BARRICADE
(DIRECTION OF ARROW SHALL MATCH DIRECTION OF TRAVEL.)

G20-I103(O)-4830

LEGEND

DRUM WITH STEADY BURNING LIGHT

DIRECTION INDICATOR BARRICADE WITH STEADY BURNING LIGHT

TYPE III BARRICADE WITH STEADY BURNING LIGHTS

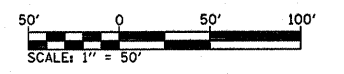
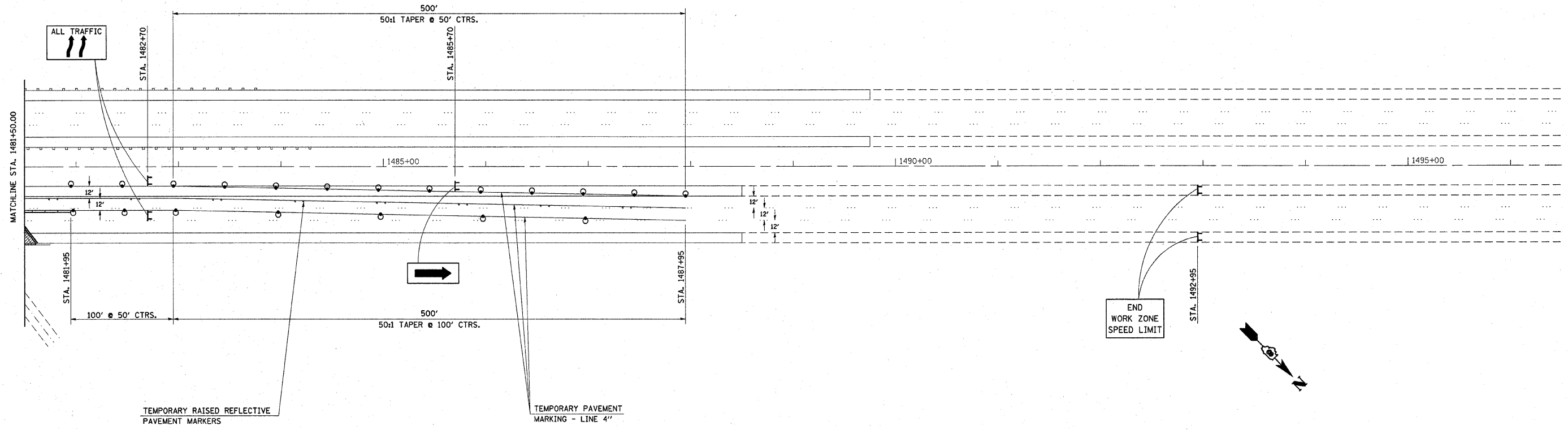
TEMPORARY CONCRETE BARRIER

IMPACT ATTENUATORS

STRUCTURE NUMBERS

NORTHBOUND: 060-0218

SOUTHBOUND: 060-0219



FILE NAME = c:\projects\ed06306\plan\stg06306cl.dgn	USER NAME = herbaughrd	DESIGNED -	REVISED -	STATE OF ILLINOIS DEPARTMENT OF TRANSPORTATION	STAGE II CONSTRUCTION, NORTH BOUND			F.A.I. RTE. 295	SECTION 60-8B-11	COUNTY MADISON	TOTAL SHEETS 42	SHEET NO. 15
	PLOT SCALE = 50.0000' / IN.	DRAWN -	REVISED -		SCALE: 50	SHEET NO. 15 OF 42 SHEETS	STA. 1481+50	TO STA. 1496+50	CONTRACT NO. 76A25			
	PLOT DATE = 12/20/2007	CHECKED -	REVISED -		FED. ROAD DIST. NO. ILLINOIS FED. AID PROJECT							
		DATE -	REVISED -									