

STA. 1454+95

STA. 1464+95

MATCHLINE STA. 1466+00.00

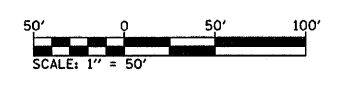
ONE-WAY CRYSTAL  
REPLACEMENT REFLECTOR

4" SKIP DASH WHITE  
SEE STANDARD 781001

EXIST. CURVE 3  
 PI STA. = 1459+11.93  
 $\Delta = 64^\circ 55' 19''$  (LT)  
 $D = 2^\circ 00' 00''$   
 $R = 2,864.79'$   
 $T = 1,822.33'$   
 $L = 3,246.10'$   
 $E = 530.49'$   
 $E = \text{-----}$   
 $T.R. = \text{-----}$   
 $S.E. \text{ RUN} = \text{-----}$   
 P.C. STA. = 1440+89.60  
 P.T. STA. = 1473+35.70

**NOTES:**

SEE STANDARD 781001 FOR PAVEMENT MARKING DETAILS.  
 REPLACEMENT REFLECTORS WERE REMOVED FOR STAGE CONSTRUCTION.



FILE NAME = c:\projects\ed86306\plan\pvt\ink86306a.dgn	USER NAME = harbaughrd	DESIGNED - DRAWN -	REVISED - REVISED -
PLOT SCALE = 50.0000' / IN.	CHECKED -	REVISED -	REVISED -
PLOT DATE = 12/20/2007	DATE -	REVISED -	REVISED -

**STATE OF ILLINOIS  
DEPARTMENT OF TRANSPORTATION**

**PAVEMENT MARKING**

SCALE: 50 SHEET NO. 19 OF 42 SHEETS STA. 1451+50 TO STA. 1466+50

F.A.I. RTE. 255	SECTION 60-8B-II	COUNTY MADISON	TOTAL SHEETS 42	SHEET NO. 19
FED. ROAD DIST. NO.			ILLINOIS FED. AID PROJECT	
CONTRACT NO. 76A25				