

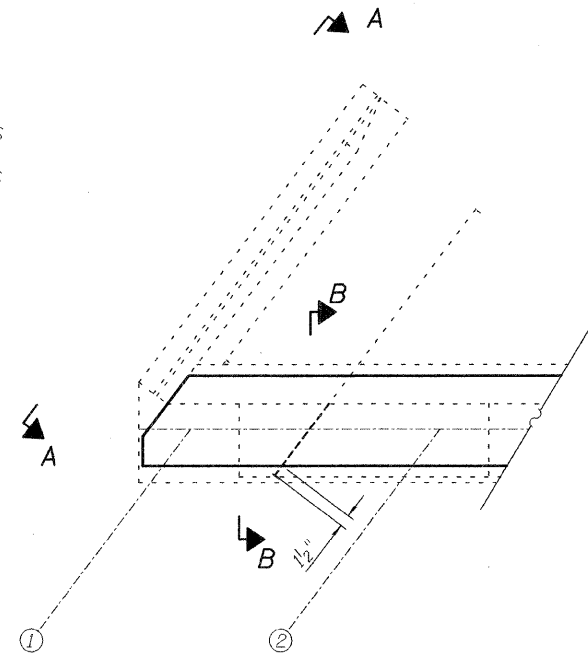
STATE OF ILLINOIS
DEPARTMENT OF TRANSPORTATION

ROUTE NO.	SECTION	COUNTY	TOTAL SHEETS	SHEET NO.	SHEET NO. 2
S.B.I.	60-8B-II	Madison	24	42	14 SHEETS
F.A.I. 255					
FED. ROAD DIST. NO. 7	ILLINOIS	FED. AID PROJECT-			

Contract # 76A25

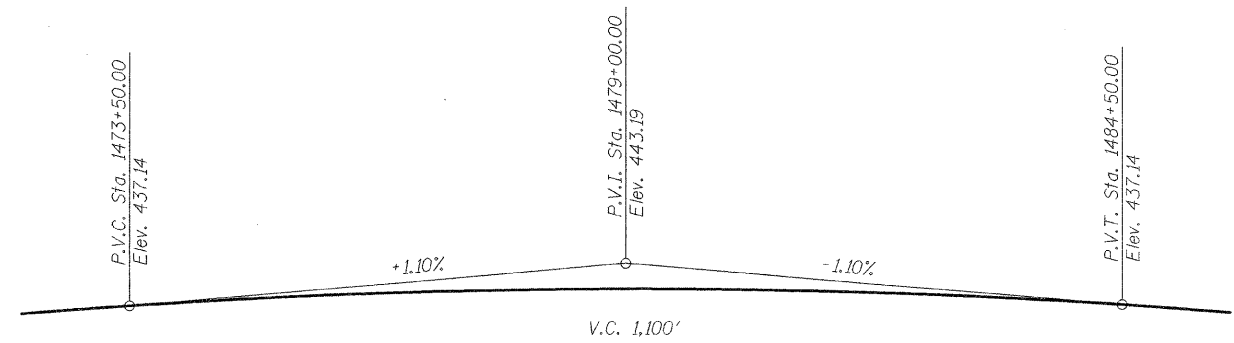
INDEX OF SHEETS

1. GENERAL PLAN & ELEVATION
2. INDEX OF SHEETS, TOTAL BILL OF MATERIAL
3. STAGE CONSTRUCTION, S.B. & N.B. LANES
4. SUPERSTRUCTURE REMOVAL AT N. ABUT., S.B. LANES
5. SUPERSTRUCTURE REMOVAL AT N. ABUT., N.B. LANES
6. SUPERSTRUCTURE REPLACEMENT AT N. ABUT., S.B. LANES
7. SUPERSTRUCTURE REPLACEMENT AT N. ABUT., N.B. LANES
8. SUPERSTRUCTURE DETAILS, S.B. & N.B. LANES
9. SUPERSTRUCTURE DETAILS, S.B. LANES
10. SUPERSTRUCTURE DETAILS, N.B. LANES
11. NORTH ABUTMENT DETAILS, S.B. LANES
12. NORTH ABUTMENT DETAILS, N.B. LANES
13. BAR SPLICERS
14. TEMPORARY CONCRETE BARRIER



PARTIAL PLAN

at North Abut. S.B. Lanes



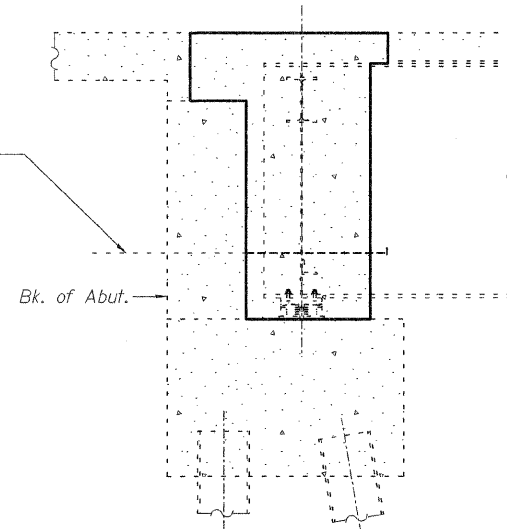
F.A.I 255 PROFILE GRADE

TOTAL BILL OF MATERIAL

ITEM	UNIT	SUPER	SUB	TOTAL
Concrete Removal	Cu. Yd.	45		45
Concrete Superstructure	Cu. Yd.	122.9		122.9
Bridge Deck Grooving	Sq. Yd.	131		131
* Protective Coat	Sq. Yd.	146		146
Reinforcement Bars, Epoxy Coated	Pound	16,040		16,040
Bar Splicers	Each	52		52
Cleaning and Painting Steel Bridge No. 1	Lump Sum	1 0.5		1 0.5
Cleaning and Painting Steel Bridge No. 2	Lump Sum	1 0.5		1 0.5
Containment and Disposal of Lead Paint Cleaning Residues No. 1	Lump Sum	1 0.5		1 0.5
Containment and Disposal of Lead Paint Cleaning Residues No. 2	Lump Sum	1 0.5		1 0.5

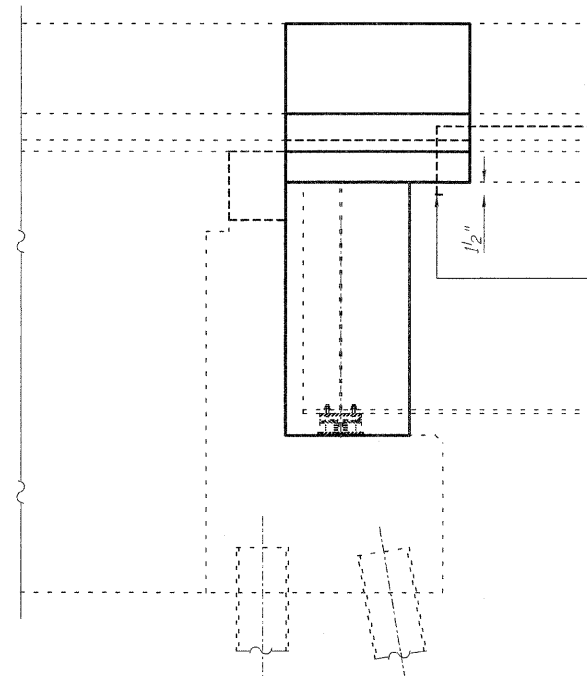
* Quantity is for inside and top surface of Parapet and Deck.

Remove and replace the damaged section of conduit.
The conduit in the diaphragm shall extend past
the face of the new construction.
Thread and cap the end of the conduit.
Cost included with Concrete Structures.



SECTION B-B

Remove junction box.
The conduit in the parapet shall extend past
the face of the new construction.
Thread and cap the end of the conduit.
Cost included with Concrete Structures.



VIEW A-A

DESIGNED	DB
CHECKED	RS
DRAWN	CLS
CHECKED	WWH

INDEX OF SHEETS &
BILL OF MATERIAL
F.A.I. RTE. 255 OVER CAHOKIA CANAL
SECTION 60-8B-II
STATION 1479+10.00
MADISON COUNTY
S.N. 060-0218 & 0219