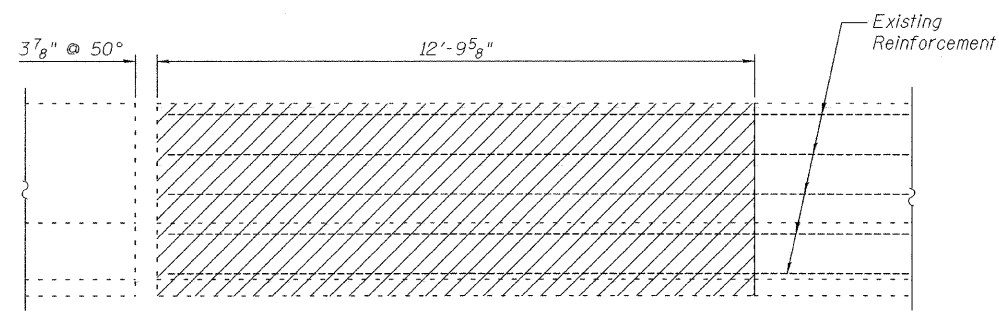


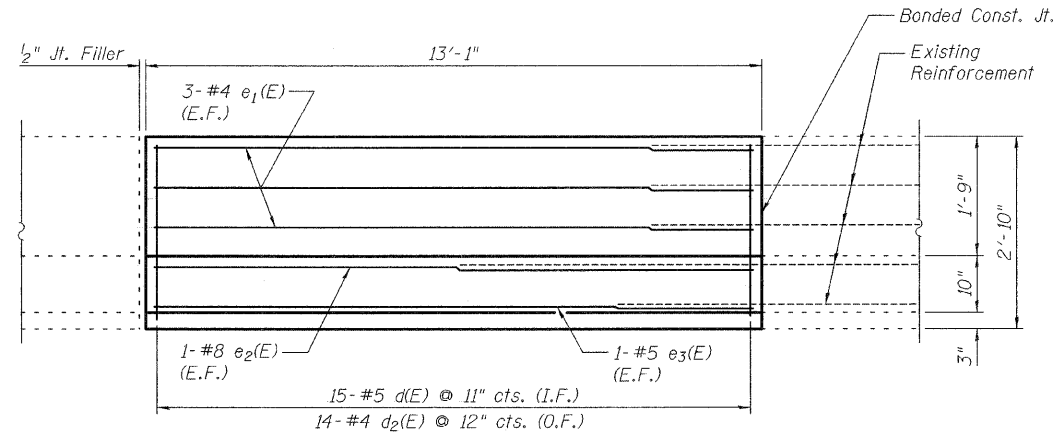
STATE OF ILLINOIS
DEPARTMENT OF TRANSPORTATION

ROUTE NO. S.B.I. F.A.I. 255	SECTION 60-8B-11	COUNTY Madison	TOTAL SHEETS 31	SHEET NO. 42	SHEET NO. 9 14 SHEETS
FED. ROAD DIST. NO. 7		ILLINOIS	FED. AID PROJECT		

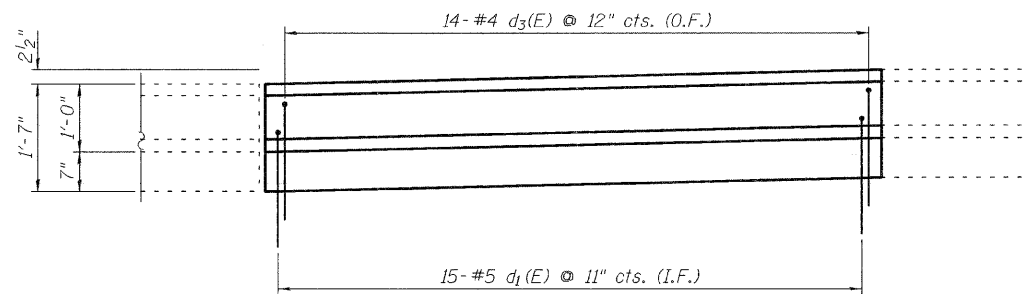
Contract # 76A25



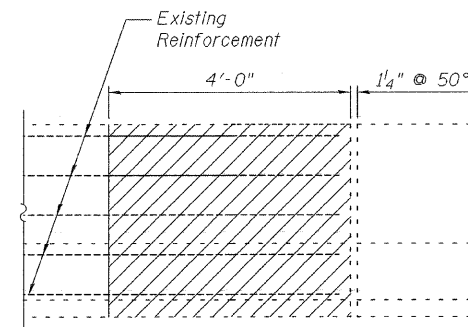
VIEW D-D
(SHOWING CONCRETE REMOVAL)



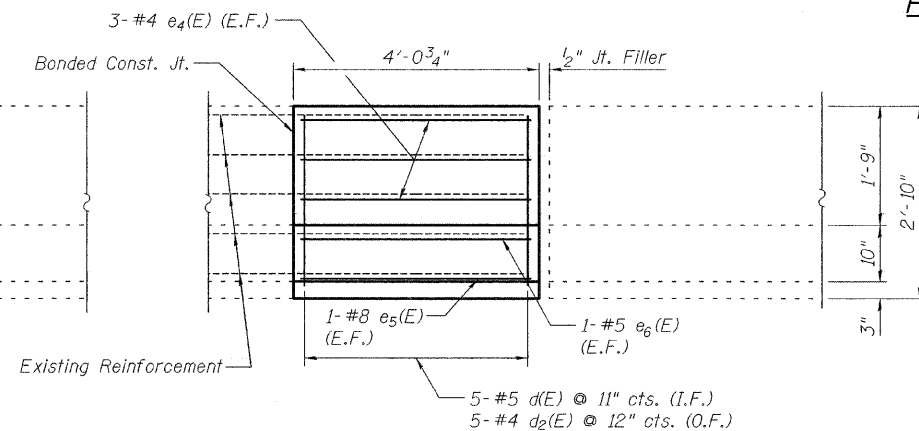
VIEW H-H
Showing Concrete Replacement



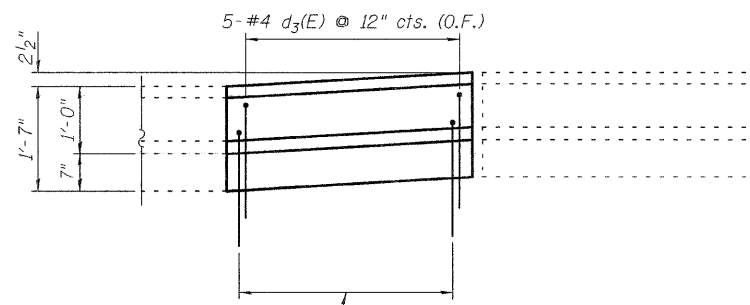
PLAN



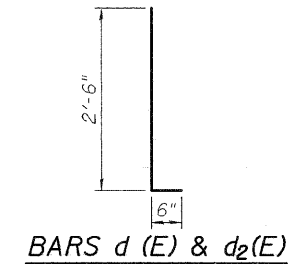
VIEW C-C
Showing Concrete Removal



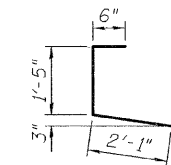
VIEW G-G
Showing Concrete Replacement



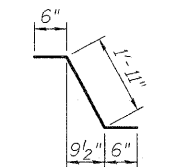
PLAN



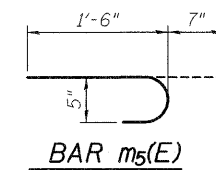
BARS d(E) & d2(E)



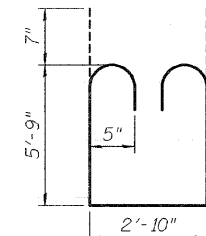
BAR d3(E)



BAR d1(E)



BAR m5(E)



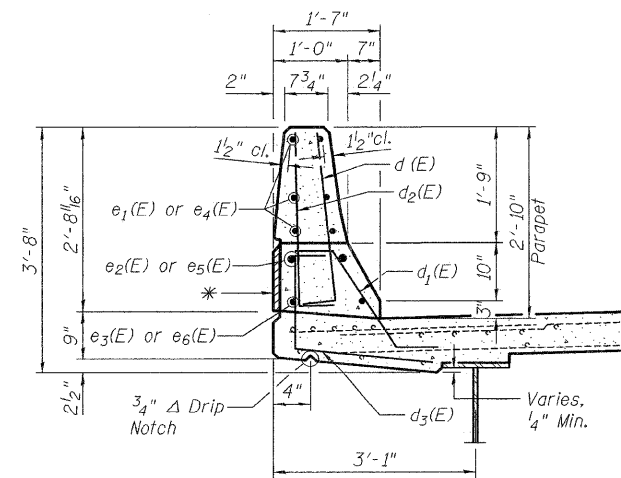
BAR s1(E)

MIN BAR LAPS		
#4	1'-4"	
#5	1'-8"	
#8	3'-5"	

SUPERSTRUCTURE
BILL OF MATERIAL

Bar	No.	Size	Length	Shape
a1(E)	15	#5	12'-0"	—
a2(E)	7	#5	10'-7"	—
a3(E)	2	#5	9'-5"	—
a4(E)	32	#5	27'-2"	—
a5(E)	15	#5	24'-3"	—
a6(E)	2	#5	9'-0"	—
a7(E)	24	#5	26'-6"	—
a8(E)	10	#5	24'-3"	—
a9(E)	4	#6	34'-3"	—
a10(E)	4	#6	35'-2"	—
b1(E)	2	#5	6'-6"	—
b2(E)	27	#5	21'-6"	—
b3(E)	2	#5	14'-6"	—
b4(E)	5	#5	12'-9"	—
b5(E)	5	#5	3'-9"	—
b6(E)	27	#5	20'-0"	—
d(E)	20	#5	3'-0"	┌
d1(E)	20	#5	2'-11"	┌
d2(E)	19	#4	3'-0"	┌
d3(E)	19	#4	4'-0"	┌
e1(E)	6	#4	12'-10"	—
e2(E)	2	#8	12'-10"	—
e3(E)	2	#5	12'-10"	—
e4(E)	6	#4	3'-9"	—
e5(E)	2	#8	3'-9"	—
e6(E)	2	#5	3'-9"	—
m1(E)	6	#6	34'-3"	—
m2(E)	6	#6	35'-2"	—
m3(E)	20	#6	13'-8"	—
m4(E)	8	#6	8'-9"	—
m5(E)	132	#5	2'-1"	┌
s1(E)	70	#5	15'-6"	┌
v1(E)	140	#5	5'-9"	—
Concrete Removal		Cu. Yds.	23	
Concrete Superstructure		Cu. Yds.	61.8	
Reinforcement Bars, Epoxy Coated		Pound	8,020	

Existing reinforcement bars extending into the removal area shall be cleaned, straightened and incorporated into the new construction. Reinforcement bars designated (E) shall be epoxy coated.



* Patterned Rope Texture Concrete

TYP. SECTION THRU PARAPET

SUPERSTRUCTURE DETAILS

SOUTHBOUND LANES
F.A.I. RTE. 255 OVER CAHOKIA CANAL
SECTION 60-8B-11
STATION 1479+10.00
MADISON COUNTY
S.N. 060-0218 & 0219

DESIGNED	DB
CHECKED	RS
DRAWN	RAA
CHECKED	WWH