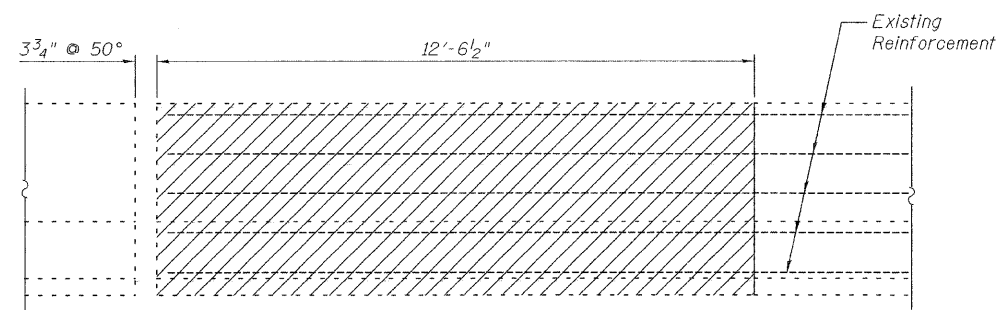
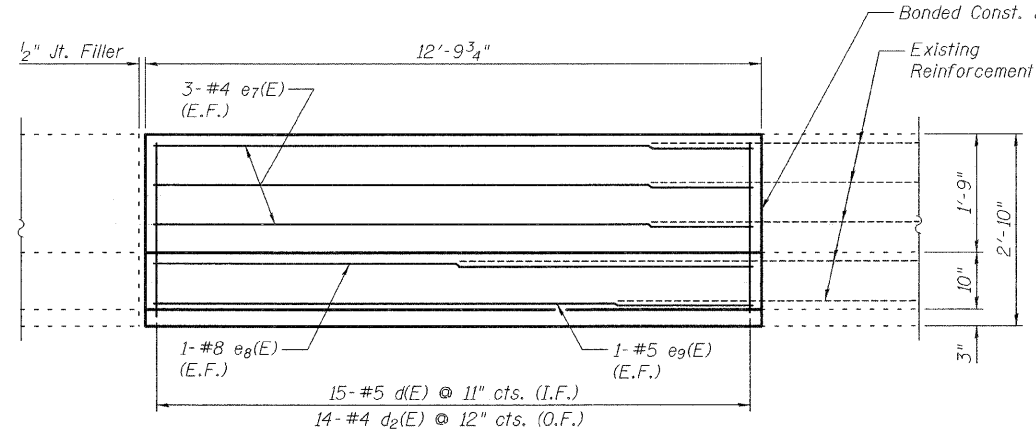


STATE OF ILLINOIS
DEPARTMENT OF TRANSPORTATION

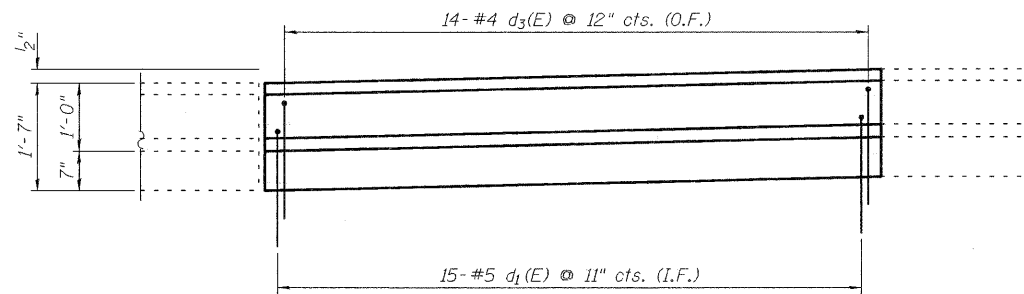
ROUTE NO.	SECTION	COUNTY	TOTAL SHEETS	SHEET NO.	SHEET NO. 10 14 SHEETS
S.B.I. F.A.I. 255	60-8B-II	Madison	32	42	
FED. ROAD DIST. NO. 7	ILLINOIS	FED. AID PROJECT-			
Contract # 76A25					



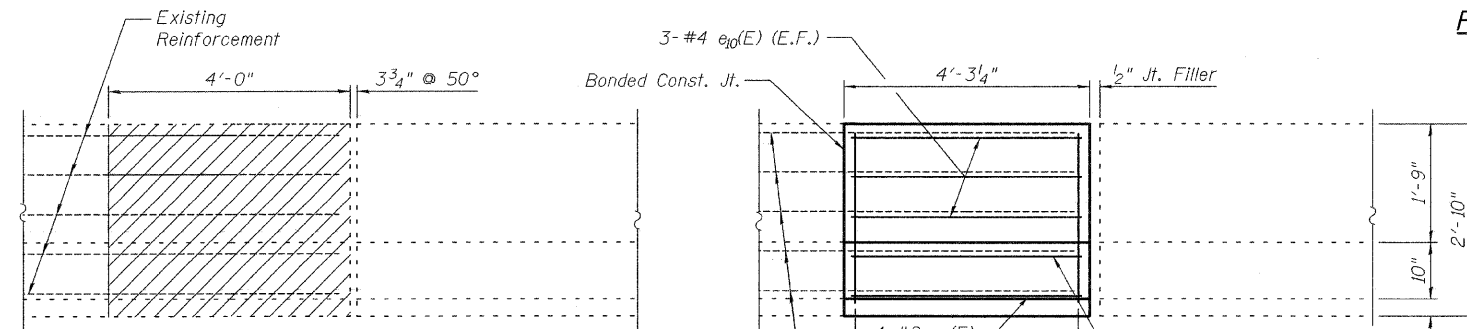
VIEW F-F
Showing Concrete Removal



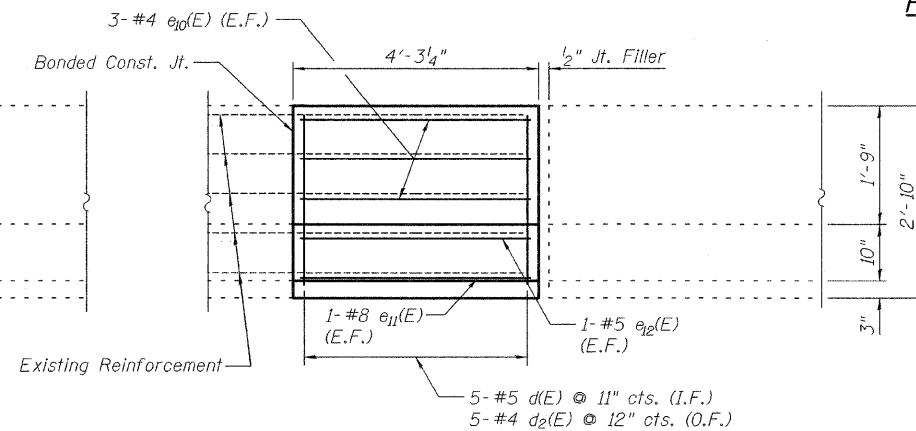
VIEW J-J
Showing Concrete Replacement



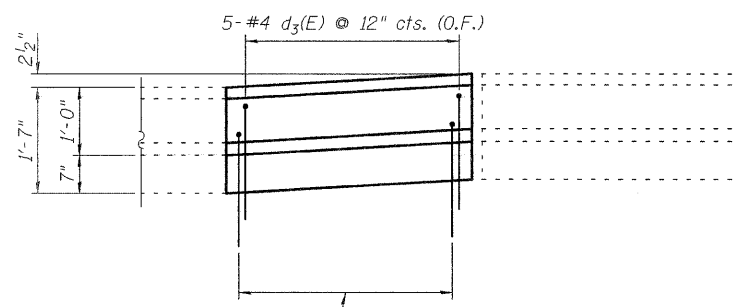
PLAN



VIEW E-E
Showing Concrete Removal

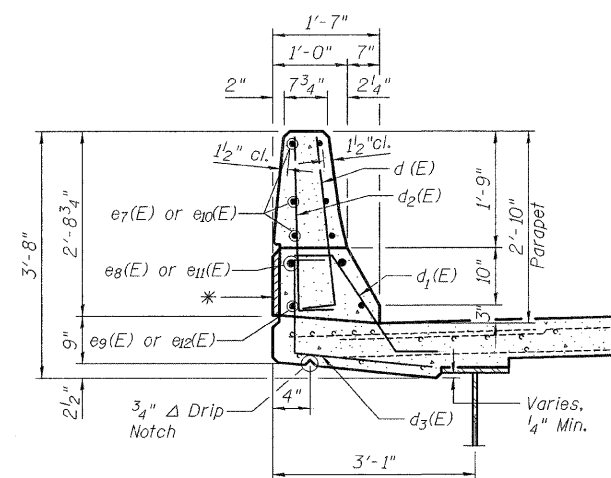
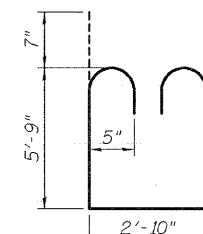
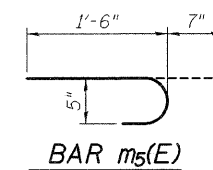
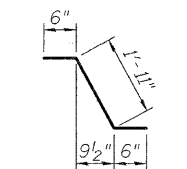
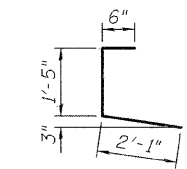
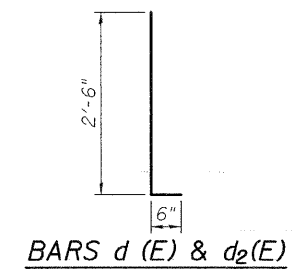


VIEW I-I
Showing Concrete Replacement



PLAN

DESIGNED	DB
CHECKED	RS
DRAWN	RAA
CHECKED	WWH



* Patterned Rope Texture Concrete

TYP. SECTION THRU PARAPET

**SUPERSTRUCTURE
BILL OF MATERIAL**

Bar	No.	Size	Length	Shape
a1(E)	15	#5	12'-0"	—
a2(E)	7	#5	10'-7"	—
a3(E)	2	#5	9'-5"	—
a4(E)	32	#5	27'-2"	—
a5(E)	15	#5	24'-3"	—
a6(E)	2	#5	9'-0"	—
a7(E)	24	#5	26'-6"	—
a8(E)	10	#5	24'-3"	—
a9(E)	4	#6	34'-3"	—
a10(E)	4	#6	35'-2"	—
b1(E)	2	#5	6'-6"	—
b2(E)	27	#5	21'-6"	—
b3(E)	2	#5	14'-6"	—
b4(E)	5	#5	12'-9"	—
b5(E)	5	#5	3'-9"	—
b6(E)	27	#5	20'-0"	—
d(E)	20	#5	3'-0"	┘
d1(E)	20	#5	2'-11"	┘
d2(E)	19	#4	3'-0"	┘
d3(E)	19	#4	4'-0"	┘
e7(E)	6	#4	12'-6"	—
e8(E)	2	#8	12'-6"	—
e9(E)	2	#5	12'-6"	—
e10(E)	6	#4	4'-0"	—
e11(E)	2	#8	4'-0"	—
e12(E)	2	#5	4'-0"	—
m1(E)	6	#6	34'-3"	—
m2(E)	6	#6	35'-2"	—
m3(E)	20	#6	13'-8"	—
m4(E)	8	#6	8'-9"	—
m5(E)	132	#5	2'-1"	┘
s1(E)	70	#5	15'-6"	┘
v1(E)	140	#5	5'-9"	—
Concrete Removal		Cu. Yds.	22	
Concrete Superstructure		Cu. Yds.	61.1	
Reinforcement Bars, Epoxy Coated		Pound	8,020	

MIN BAR LAPS	
#4	1'-4"
#5	1'-8"
#8	3'-5"

Existing reinforcement bars extending into the removal area shall be cleaned, straightened and incorporated into the new construction.
Reinforcement bars designated (E) shall be epoxy coated.

SUPERSTRUCTURE DETAILS
NORTHBOUND LANES
F.A.I. RTE. 255 OVER CAHOKIA CANAL
SECTION 60-8B-II
STATION 1479+10.00
MADISON COUNTY
S.N. 060-0218 & 0219