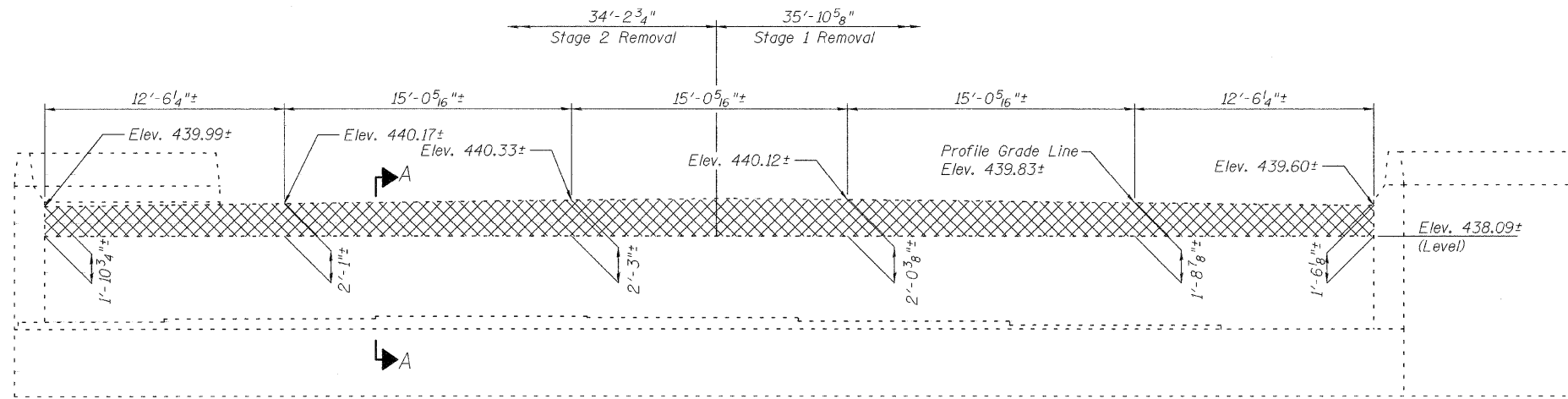


STATE OF ILLINOIS
DEPARTMENT OF TRANSPORTATION

ROUTE NO. S.B.I. F.A.I. 255	SECTION 60-8B-11	COUNTY Madison	TOTAL SHEETS 33	SHEET NO. 42	SHEET NO. 11 14 SHEETS
FED. ROAD DIST. NO. 7		ILLINOIS	FED. AID PROJECT		

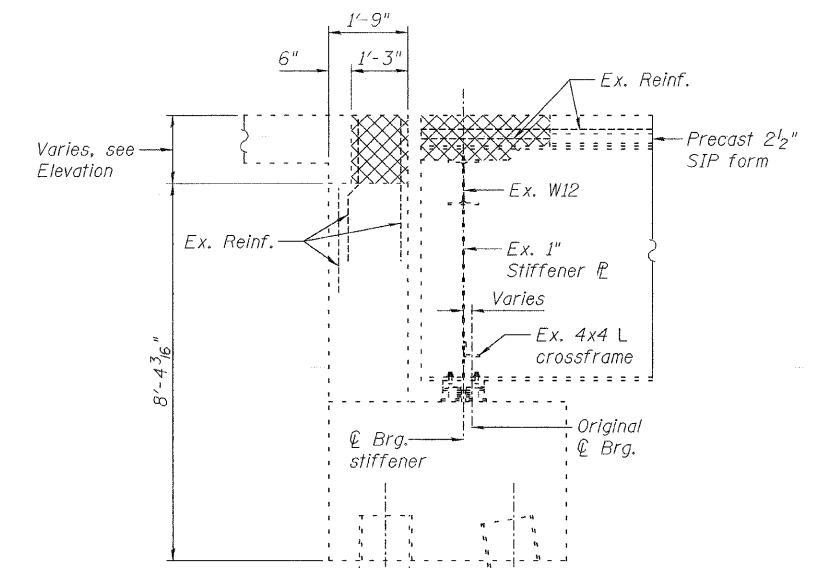
Contract # 76A25



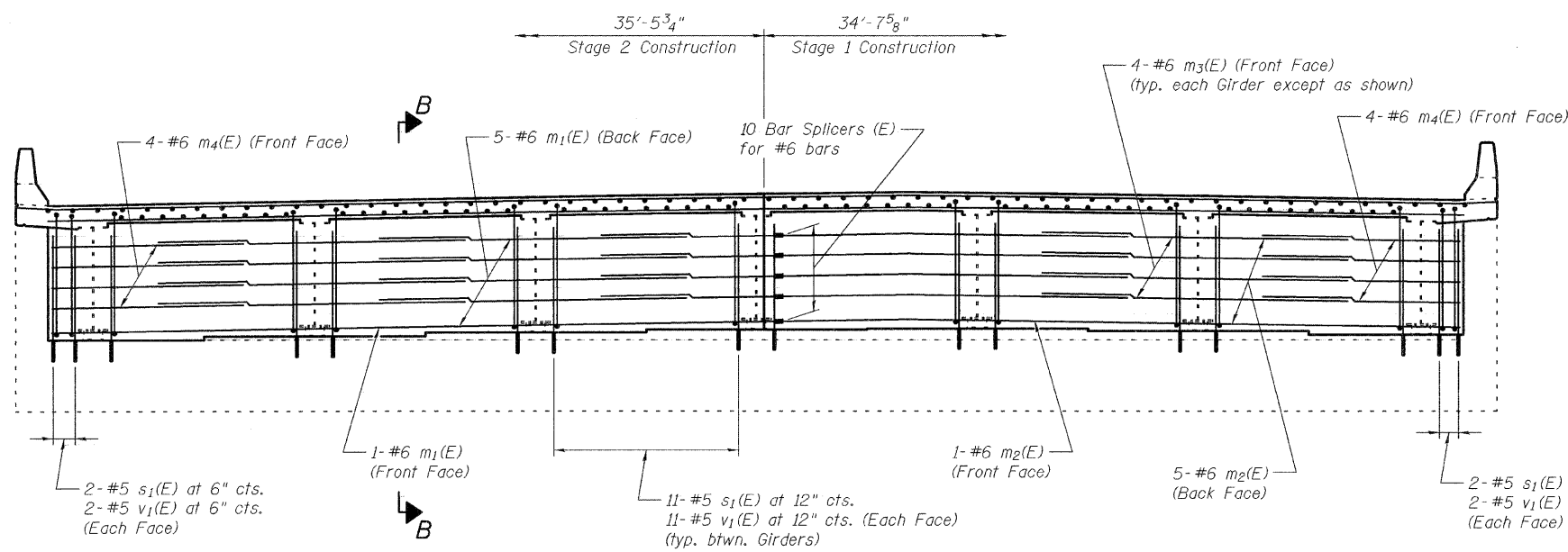
ELEVATION

Showing Concrete Removal

MIN BAR LAPS
#6 2'-7"

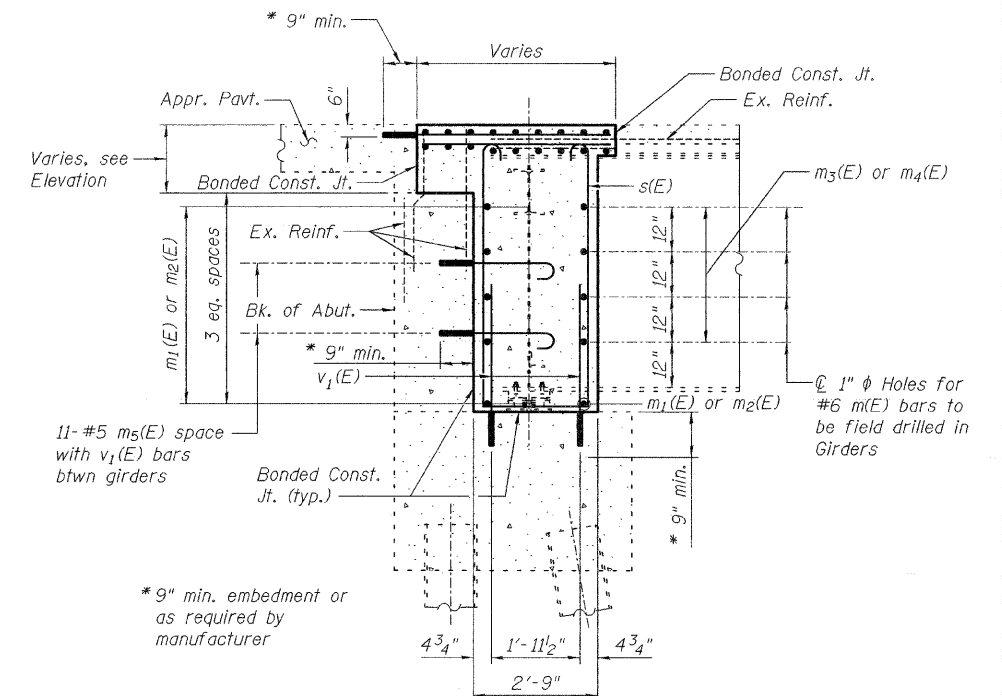


SECTION A-A



ELEVATION

Showing Concrete Replacement



SECTION B-B

NORTH ABUTMENT DETAILS, SOUTHBOUND LANES
F.A.I. RTE. 255 OVER CAHOKIA CANAL
SECTION 60-8B-11
STATION 1479+10.00
MADISON COUNTY
S.N. 060-0218 & 0219

Note:
Cross hatched areas indicate concrete removal.
Existing reinforcement bars extending into the removal area shall be cleaned, straightened and incorporated into new construction.
Epoxy grout #5 b2(E), m5(E) and v1(E) bars in 7/8 inch diameter drilled holes. See Standard Specifications.
Cost included with Reinforcement Bars, Epoxy Coated.

DESIGNED	DB
CHECKED	RS
DRAWN	CLS
CHECKED	WWH