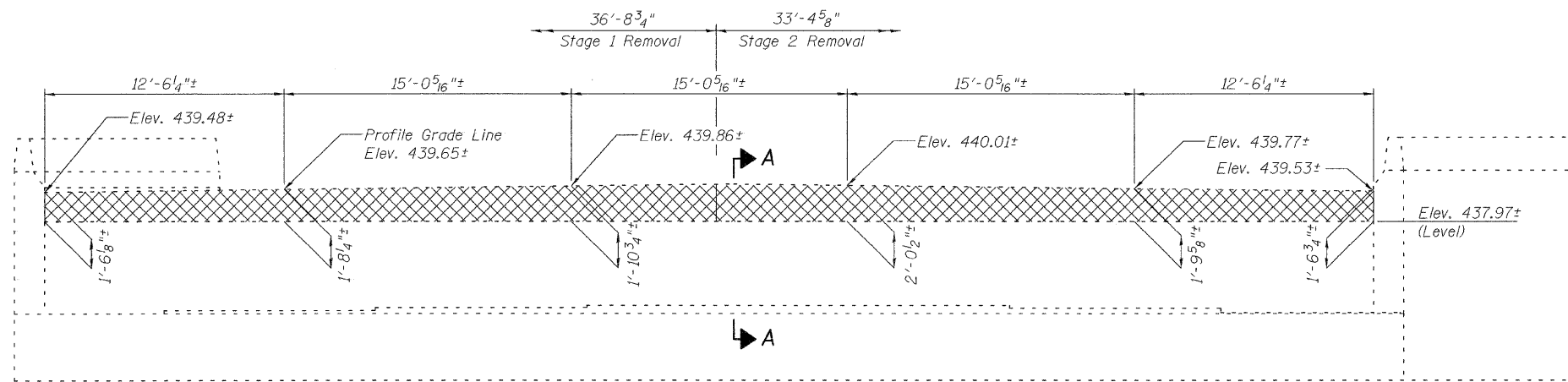


STATE OF ILLINOIS
DEPARTMENT OF TRANSPORTATION

| | | | | | |
|-----------------------|----------|------------------|--------------|-----------|---------------------------|
| ROUTE NO. | SECTION | COUNTY | TOTAL SHEETS | SHEET NO. | SHEET NO. 12 14 SHEETS |
| S.B.I. | 60-8B-II | Madison | 34 | 42 | |
| F.A.I. 255 | | | | | |
| FED. ROAD DIST. NO. 7 | ILLINOIS | FED. AID PROJECT | | | |

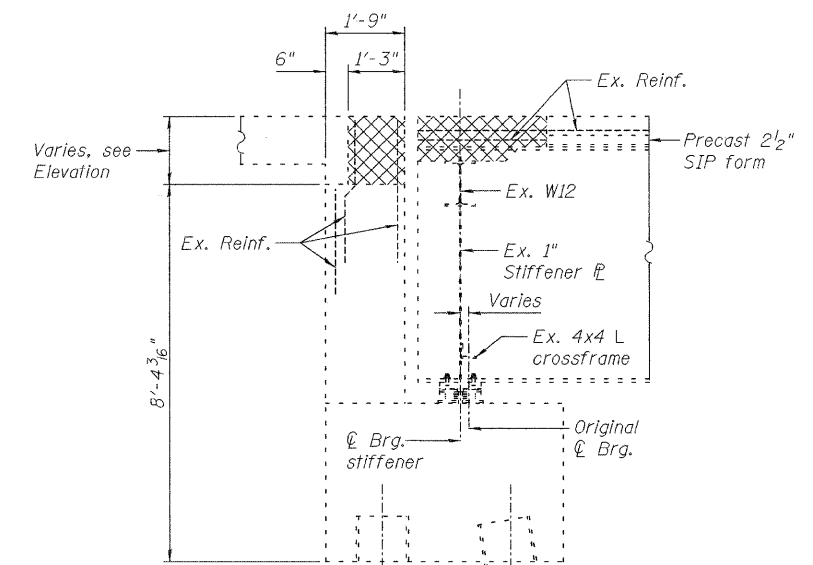
Contract # 76A25



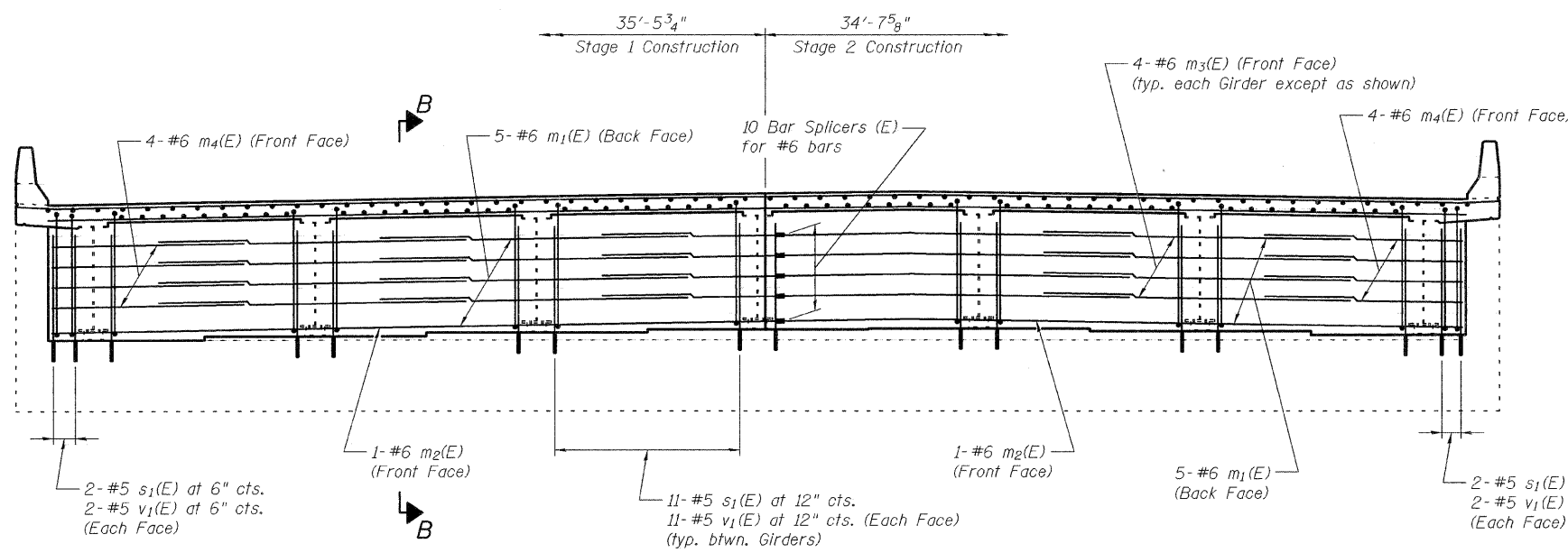
ELEVATION

Showing Concrete Removal

MIN BAR LAPS
#6 2'-7"

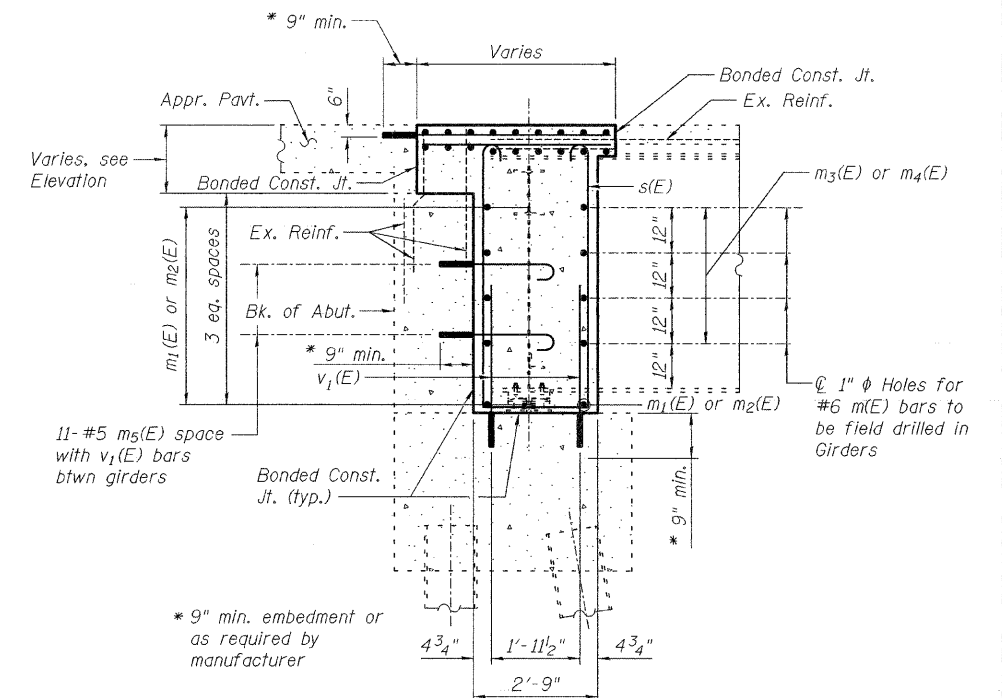


SECTION A-A



ELEVATION

Showing Concrete Replacement



SECTION B-B

Note:
Cross hatched areas indicate concrete removal. Existing reinforcement bars extending into the removal area shall be cleaned, straightened and incorporated into new construction.
Epoxy grout #5 b₂(E), m₅(E) and v₁(E) bars in 7/8" ϕ drilled holes. See Standard Specifications.
Cast included with Reinforcement Bars, Epoxy Coated.

NORTH ABUTMENT DETAILS, NORTHBOUND LANES
F.A.I. RTE. 255 OVER CAHOKIA CANAL
SECTION 60-8B-II
STATION 1479+10.00
MADISON COUNTY
S.N. 060-0218 & 0219

| | |
|----------|-----|
| DESIGNED | DB |
| CHECKED | RS |
| DRAWN | CLS |
| CHECKED | WWH |