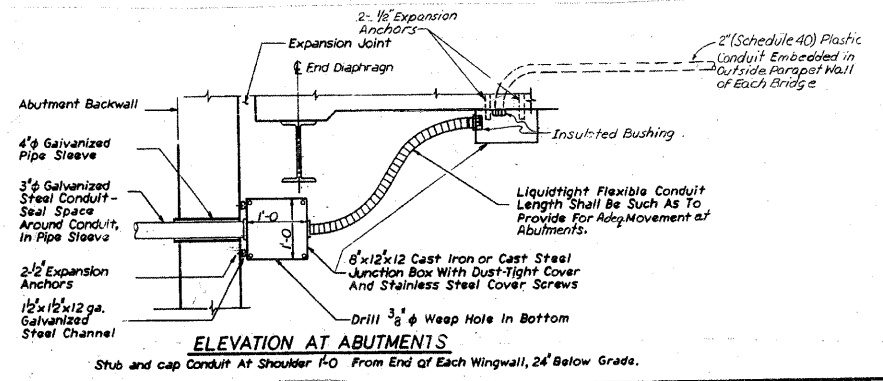
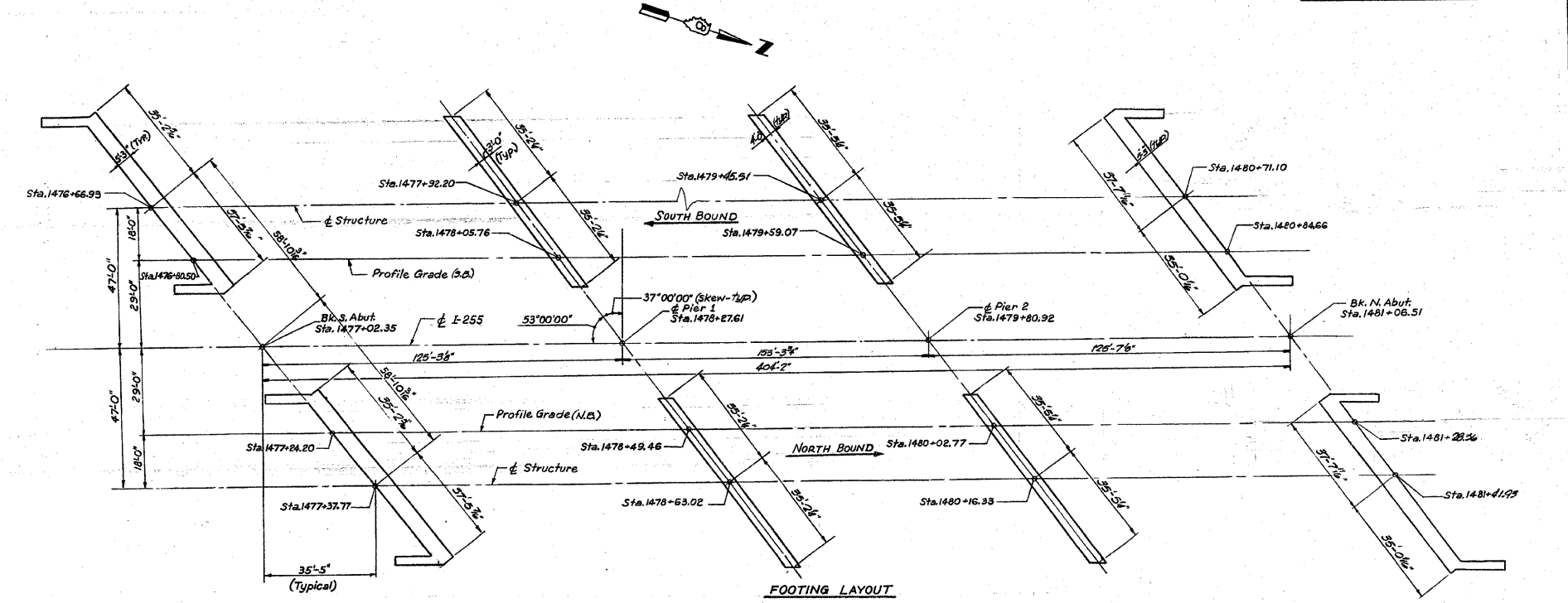


ROUTE NO.	SECTION	COUNTY	TOTAL SHEETS	SHEET NO.
F.A.I. 255	60-88-1	MADISON	47	23
FED. ROAD DIV. No. 7 ILLINOIS PROJECT				



DESIGNED	J.M.P.
CHECKED	S.K.L./D.M.
DRAWN	B.B.
CHECKED	J.M.P.

STATE OF ILLINOIS
DEPARTMENT OF TRANSPORTATION
FOOTING LAYOUT
F.A.I. 255 OVER
CAHOKIA CANAL
SECTION 60-88-1
MADISON COUNTY
H. W. LOCHNER, INC.
ENGINEERS
CHICAGO, ILL.

FOR INFORMATION ONLY

FILE NAME =	USER NAME = herbaughrd	DESIGNED -	REVISED -	STATE OF ILLINOIS DEPARTMENT OF TRANSPORTATION	EXISTING STRUCTURE PLANS		F.A.I. RTE.	SECTION	COUNTY	TOTAL SHEETS	SHEET NO.			
PROJECTS\ed06306\plan\pln06306a.dgn		DRAWN -	REVISED -		SCALE:	SHEET NO. 36 OF	SHEETS	STA.	TO STA.	255	60-88-11	MADISON	42	36
		CHECKED -	REVISED -									CONTRACT NO. T6A25		
		DATE -	REVISED -					FED. ROAD DIST. NO.		ILLINOIS FED. AID PROJECT				