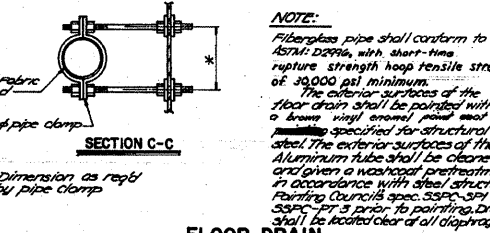
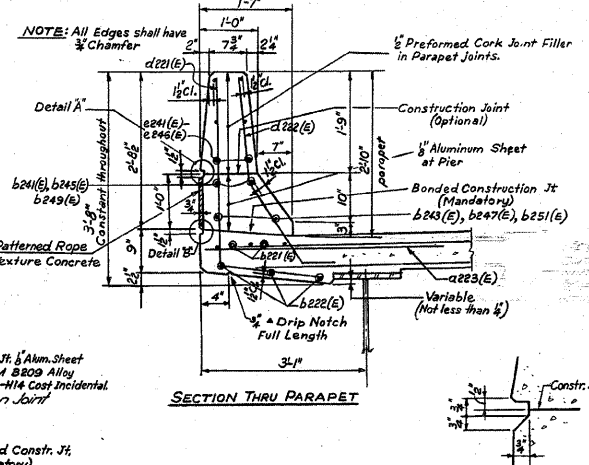
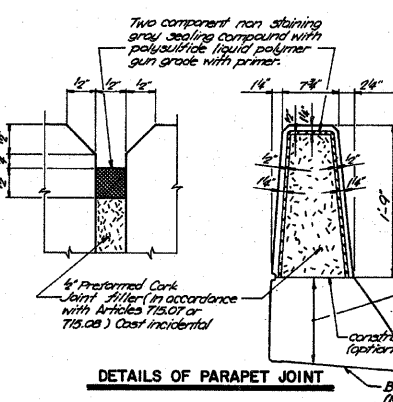
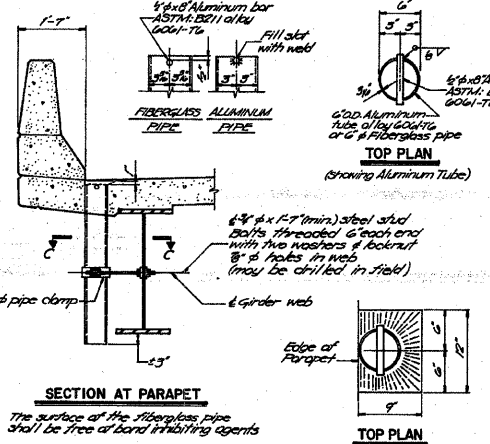


ROUTE NO.	SECTION	COUNTY	TOTAL SHEETS	SHEET NO.
F.A.I. 255	60-88-1	MADISON	47	30
FED. ROAD DIV. NO. 7 ILLINOIS PROJECT				

BILL OF MATERIALS					
BAR	NO.	SIZE	LENGTH	SHAPE	
a24(e)	144	1/4"	17'-1"		
a24(e)	48	1/4"	18'-8"		
a24(e)	72	1/4"	19'-0"		
b24(e)	32	3/8"	24'-5"		
b24(e)	32	3/8"	27'-8"		
b24(e)	16	3/8"	18'-5"		
b24(e)	16	3/8"	18'-8"		
b24(e)	16	3/8"	31'-2"		
b24(e)	16	3/8"	30'-5"		
Class X concrete				Cu186	163.5
Reinft. Bars (Cops/CY)				Lbs.	19,170

INSIDE ELEVATION OF PARAPET

(All dimensions taken from inside face of curb)



DESIGNED	S.K.L.
CHECKED	R.W.C./D.L.L.
DRAWN	J.W.H.
CHECKED	S.K.L.

NOTE: For location of Floor Drains see sheet 9. Reinforcement bars designated (e) shall be epoxy coated. See special provisions. E.F. = Each Face.

STATE OF ILLINOIS
DEPARTMENT OF TRANSPORTATION
PARAPET AND FLOOR DRAIN DETAILS
F.A.I. 255 OVER CAHOKIA CANAL
SECTION 60-88-1
MADISON COUNTY
H. W. LOCHNER, INC.
CHICAGO, ILL.

FOR INFORMATION ONLY

FILE NAME = c:\proj\jcts\ed06306\plan\p1n06306a.dgn	USER NAME = harbaughrd	DESIGNED -	REVISD -	STATE OF ILLINOIS DEPARTMENT OF TRANSPORTATION	EXISTING STRUCTURE PLANS	F.A.I. RTE. 255	SECTION 60-88-11	COUNTY MADISON	TOTAL SHEETS 42	SHEET NO. 40		
PLOT SCALE = 50.0000' / IN.	CHECKED -	REVISD -	SCALE:			SHEET NO. 38 OF SHEETS STA.	TO STA.	FED. ROAD DIST. NO. ILLINOIS FED. AID PROJECT	CONTRACT NO. 76A25			
PLOT DATE = 11/28/2007	DATE -	REVISD -										