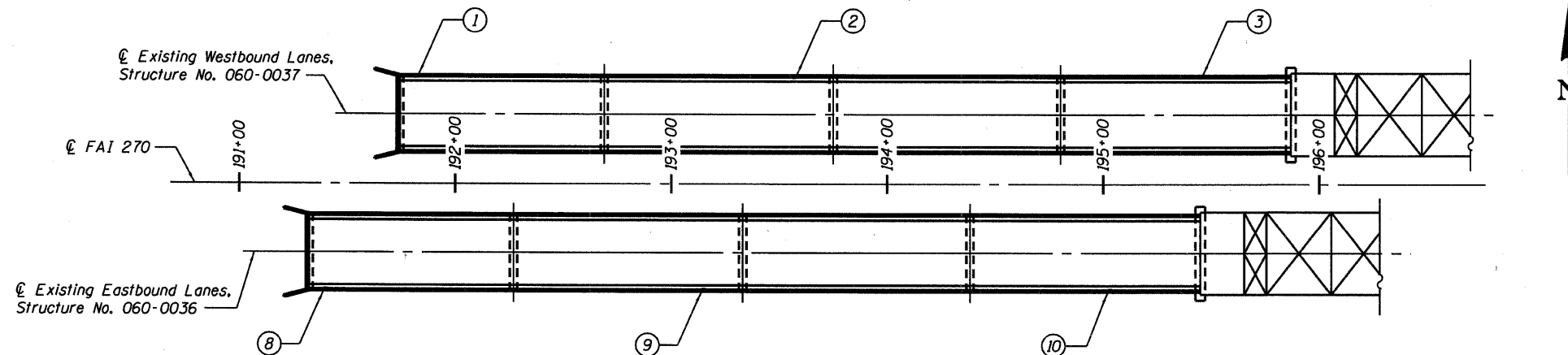


STATE OF ILLINOIS
DEPARTMENT OF TRANSPORTATION

ROUTE NO.	SECTION	COUNTY	TOTAL SHEETS	SHEET NO.
F.A.I. 270	60 1B-1-3	MADISON	31	29
FED. ROAD DIST. NO. 7	ILLINOIS	FED. AID PROJECT		

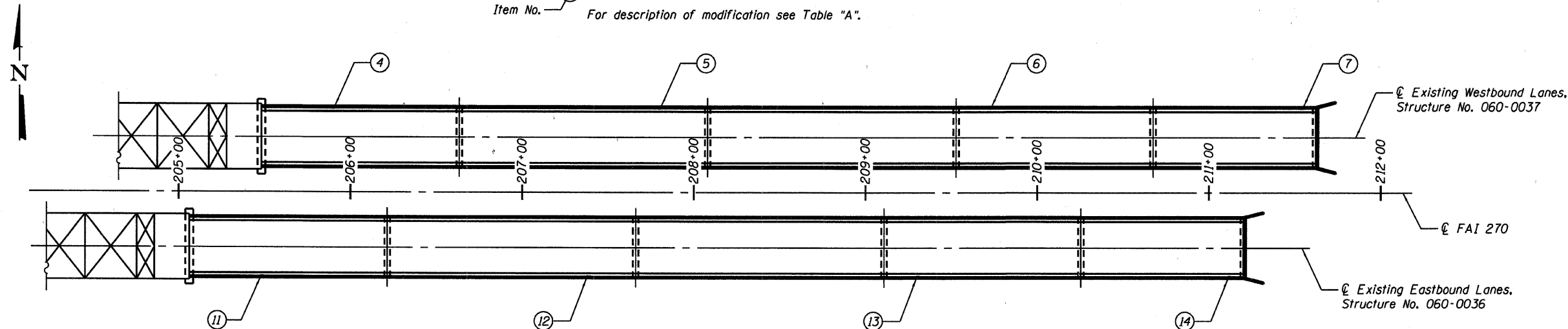
SHEET NO. 2
4 SHEETS

Contract #



PARTIAL PLAN - WEST APPROACH

Item No. Light Standard Support Modification
For description of modification see Table "A".



PARTIAL PLAN - EAST APPROACH

Item No. Light Standard Support Modification
For description of modification see Table "A".

Note:
For details associated with work to be done,
see Sheet 3 of 4.

TABLE "A"

ITEM	ROADWAY	PARAPET	STATION	MODIFICATION DESCRIPTION
1	W.B.	North	191+82	Type B Conc. Removal and Replacement at Light Std.
2	W.B.	North	193+57	Type A Conc. Removal and Replacement at Light Std.
3	W.B.	North	195+45	Type A Conc. Removal and Replacement at Light Std.
4	W.B.	North	205+90	Type A Conc. Removal and Replacement at Light Std.
5	W.B.	North	207+80	Type B Conc. Removal and Replacement at Light Std.
6	W.B.	North	209+72.5	Type C Conc. Removal and Replacement at Light Std.
7	W.B.	North	211+54	Type B Conc. Removal and Replacement at Light Std.
8	E.B.	South	191+40	Type A Conc. Removal and Replacement at Light Std.
9	E.B.	South	193+15	Type A Conc. Removal and Replacement at Light Std.
10	E.B.	South	195+03	Type B Conc. Removal and Replacement at Light Std.
11	E.B.	South	205+48.5	Type A Conc. Removal and Replacement at Light Std.
12	E.B.	South	207+38.5	Type A Conc. Removal and Replacement at Light Std.
13	E.B.	South	209+30.5	Type C Conc. Removal and Replacement at Light Std.
14	E.B.	South	211+12	Type A Conc. Removal and Replacement at Light Std.

DESIGNED	MEL
CHECKED	DWP
DRAWN	PRC
CHECKED	MEL

EXAMINED	200
PASSED	ENGINEER OF BRIDGE DESIGN
	ENGINEER OF BRIDGES AND STRUCTURES



**LIGHT STANDARD
SUPPORT LOCATIONS
I-270 EBL AND WBL OVER THE
CHAIN OF ROCKS CANAL
F.A.I. ROUTE 270 - SECTION 60-1B-1-3
MADISON COUNTY
STATION 200+46.53
STRUCTURE NO. 060-0036 AND 060-0037**