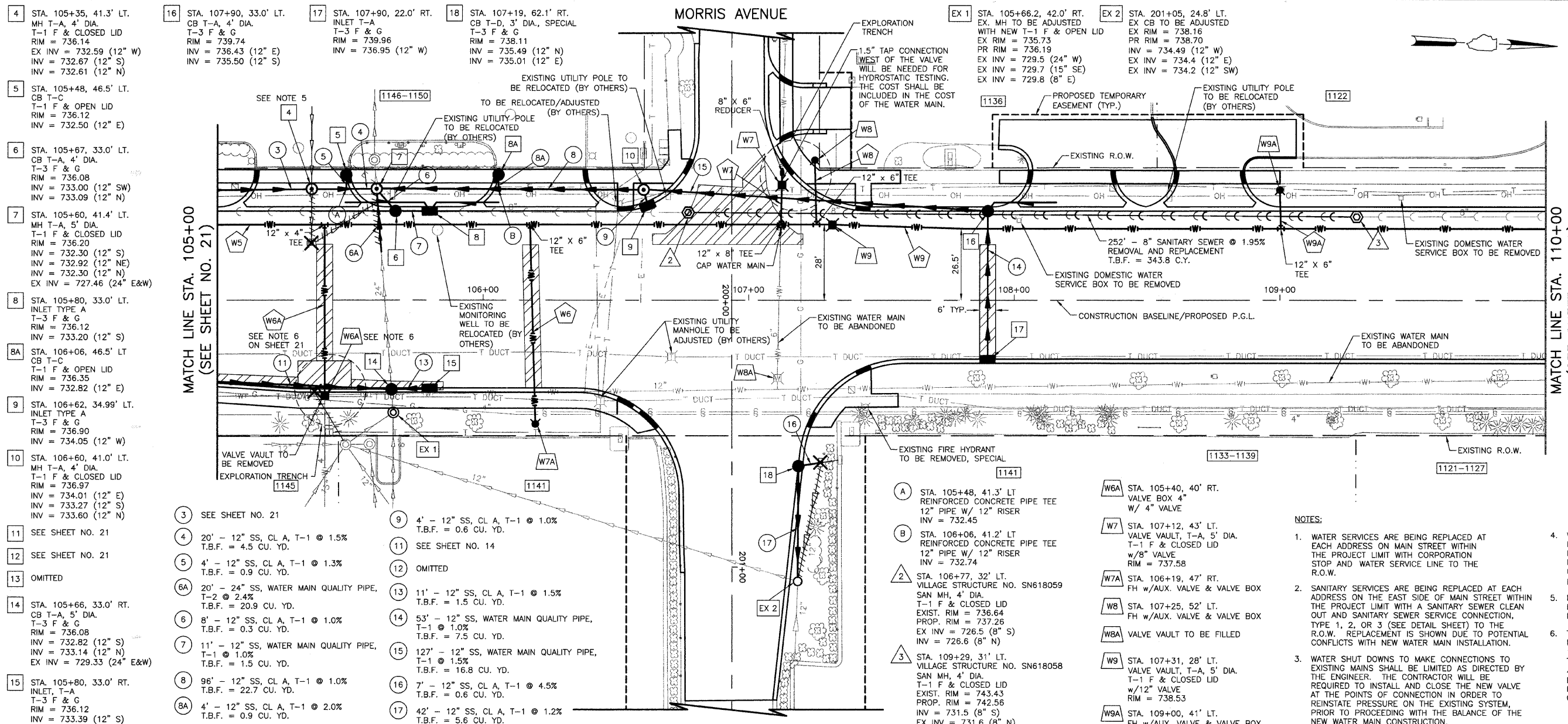


F. A. RTE.	SECTION	COUNTY	TOTAL SHEETS	SHEET NO.
261103-00148-00-PV	DUPAGE	58	22	
STA. 105+00 TO STA. 110+00				
FED. ROAD DISTRICT NO. 7 (ILLINOIS) FED. AID PROJECT M-8003(521)				
CONTRACT NO. 83952				

MORRIS AVENUE



- LEGEND**
- CLASS D PATCH, 7"
 - EXISTING STRUCTURE TO BE REMOVED
 - EXISTING SEWER TO BE REMOVED
 - PIPE UNDERDRAIN, FABRIC LINED TRENCH 4" (20' PER LOCATION)
 - W5 SEE SHEET NO. 21
 - W6 75' - 6" D.I. WATER MAIN T.B.F. = 46.2 C.Y.
 - W6A 64' - 4" D.I. WATER MAIN T.B.F. = 63 C.Y.
 - W7 15' - 8" D.I. WATER MAIN T.B.F. = 10.2 C.Y.
 - W8 24' - 6" D.I. WATER MAIN T.B.F. = 16.3 C.Y.
 - W9 348' - 12" D.I. WATER MAIN T.B.F. = 250.6 C.Y.
 - W9A 14' - 6" D.I. WATER MAIN T.B.F. = 9.5 C.Y.

- 4 STA. 105+35, 41.3' LT. MH T-A, 4' DIA. T-1 F & CLOSED LID RIM = 736.14 EX INV = 732.59 (12" W) INV = 732.67 (12" S) INV = 732.61 (12" N)
- 5 STA. 105+48, 46.5' LT. CB T-C T-1 F & OPEN LID RIM = 736.12 INV = 732.50 (12" E)
- 6 STA. 105+67, 33.0' LT. CB T-A, 4' DIA. T-3 F & G RIM = 736.08 INV = 733.00 (12" SW) INV = 733.09 (12" N)
- 7 STA. 105+60, 41.4' LT. MH T-A, 5' DIA. T-1 F & CLOSED LID RIM = 736.20 INV = 732.30 (12" S) INV = 732.92 (12" NE) INV = 732.30 (12" N) EX INV = 727.46 (24" E&W)
- 8 STA. 105+80, 33.0' LT. INLET TYPE A T-3 F & G RIM = 736.12 INV = 733.20 (12" S)
- 8A STA. 106+06, 46.5' LT. CB T-C T-1 F & OPEN LID RIM = 736.35 INV = 732.62 (12" E)
- 9 STA. 106+62, 34.99' LT. INLET TYPE A T-3 F & G RIM = 736.90 INV = 734.05 (12" W)
- 10 STA. 106+60, 41.0' LT. MH T-A, 4' DIA. T-1 F & CLOSED LID RIM = 736.97 INV = 734.01 (12" E) INV = 733.27 (12" S) INV = 733.60 (12" N)
- 11 SEE SHEET NO. 21
- 12 SEE SHEET NO. 21
- 13 OMITTED
- 14 STA. 105+66, 33.0' RT. CB T-A, 5' DIA. T-3 F & G RIM = 736.08 INV = 732.82 (12" S) INV = 733.14 (12" N) EX INV = 729.33 (24" E&W)
- 15 STA. 105+80, 33.0' RT. INLET, T-A T-3 F & G RIM = 736.12 INV = 733.39 (12" S)
- 16 STA. 107+90, 33.0' LT. CB T-A, 4' DIA. T-3 F & G RIM = 739.74 INV = 736.43 (12" E) INV = 735.50 (12" S)
- 17 STA. 107+90, 22.0' RT. INLET T-A T-3 F & G RIM = 739.96 INV = 736.95 (12" W)
- 18 STA. 107+19, 62.1' RT. CB T-D, 3' DIA., SPECIAL T-3 F & G RIM = 738.11 INV = 735.49 (12" N) INV = 735.01 (12" E)

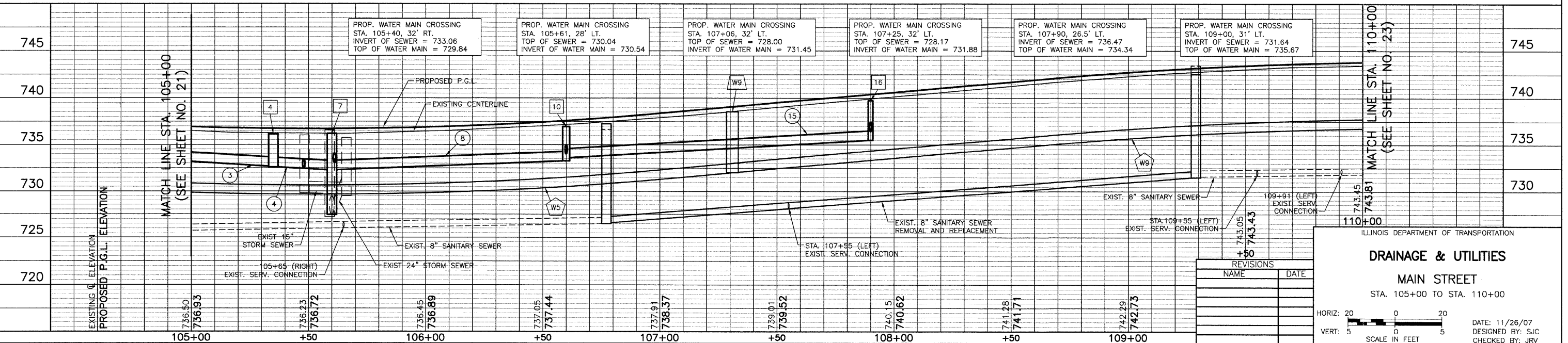
MATCH LINE STA. 105+00 (SEE SHEET NO. 21)

MATCH LINE STA. 110+00 (SEE SHEET NO. 23)

- 3 SEE SHEET NO. 21
- 4 20' - 12" SS, CL A, T-1 @ 1.5% T.B.F. = 4.5 CU. YD.
- 5 4' - 12" SS, CL A, T-1 @ 1.3% T.B.F. = 0.9 CU. YD.
- 6A 20' - 24" SS, WATER MAIN QUALITY PIPE, T-2 @ 2.4% T.B.F. = 20.9 CU. YD.
- 6 8' - 12" SS, CL A, T-1 @ 1.0% T.B.F. = 0.3 CU. YD.
- 7 11' - 12" SS, WATER MAIN QUALITY PIPE, T-1 @ 1.0% T.B.F. = 1.5 CU. YD.
- 8 96' - 12" SS, CL A, T-1 @ 1.0% T.B.F. = 22.7 CU. YD.
- 8A 4' - 12" SS, CL A, T-1 @ 2.0% T.B.F. = 0.9 CU. YD.
- 9 4' - 12" SS, CL A, T-1 @ 1.0% T.B.F. = 0.6 CU. YD.
- 11 SEE SHEET NO. 14
- 12 OMITTED
- 13 11' - 12" SS, CL A, T-1 @ 1.5% T.B.F. = 1.5 CU. YD.
- 14 53' - 12" SS, WATER MAIN QUALITY PIPE, T-1 @ 1.0% T.B.F. = 7.5 CU. YD.
- 15 127' - 12" SS, WATER MAIN QUALITY PIPE, T-1 @ 1.5% T.B.F. = 16.8 CU. YD.
- 16 7' - 12" SS, CL A, T-1 @ 4.5% T.B.F. = 0.6 CU. YD.
- 17 42' - 12" SS, CL A, T-1 @ 1.2% T.B.F. = 5.6 CU. YD.
- EX 1 STA. 105+66.2, 42.0' RT. EX. MH TO BE ADJUSTED WITH NEW T-1 F & OPEN LID EX RIM = 735.73 PR RIM = 736.19 EX INV = 729.5 (24" W) EX INV = 729.7 (15" SE) EX INV = 729.8 (8" E)
- EX 2 STA. 201+05, 24.8' LT. EX. CB TO BE ADJUSTED EX RIM = 738.16 PR RIM = 738.70 INV = 734.49 (12" W) INV = 734.4 (12" E) EX INV = 734.2 (12" SW)
- W6A STA. 105+40, 40' RT. VALVE BOX 4" W/ 4" VALVE
- W7 STA. 107+12, 43' LT. VALVE VAULT, T-A, 5' DIA. T-1 F & CLOSED LID W/ 8" VALVE RIM = 737.58
- W7A STA. 106+19, 47' RT. FH W/AUX. VALVE & VALVE BOX
- W8 STA. 107+25, 52' LT. FH W/AUX. VALVE & VALVE BOX
- W8A VALVE VAULT TO BE FILLED
- W9 STA. 107+31, 28' LT. VALVE VAULT, T-A, 5' DIA. T-1 F & CLOSED LID W/ 12" VALVE RIM = 738.53
- W9A STA. 109+00, 41' LT. FH W/AUX. VALVE & VALVE BOX

- NOTES:**
- WATER SERVICES ARE BEING REPLACED AT EACH ADDRESS ON MAIN STREET WITHIN THE PROJECT LIMIT WITH CORPORATION STOP AND WATER SERVICE LINE TO THE R.O.W.
 - SANITARY SERVICES ARE BEING REPLACED AT EACH ADDRESS ON THE EAST SIDE OF MAIN STREET WITHIN THE PROJECT LIMIT WITH A SANITARY SEWER CLEAN OUT AND SANITARY SEWER SERVICE CONNECTION, TYPE 1, 2, OR 3 (SEE DETAIL SHEET) TO THE R.O.W. REPLACEMENT IS SHOWN DUE TO POTENTIAL CONFLICTS WITH NEW WATER MAIN INSTALLATION.
 - WATER SHUT DOWNS TO MAKE CONNECTIONS TO EXISTING MAINS SHALL BE LIMITED AS DIRECTED BY THE ENGINEER. THE CONTRACTOR WILL BE REQUIRED TO INSTALL AND CLOSE THE NEW VALVE AT THE POINTS OF CONNECTION IN ORDER TO REINSTATE PRESSURE ON THE EXISTING SYSTEM, PRIOR TO PROCEEDING WITH THE BALANCE OF THE NEW WATER MAIN CONSTRUCTION.
 - WATER MAIN CONNECTIONS ARE NOT PAID FOR SEPARATELY BUT SHALL BE INCLUDED IN THE COST OF WATER MAIN PIPE AND FITTINGS USED TO MAKE THE CONNECTION UNLESS "CONNECT TO EXISTING WATER MAIN (NON-PRESSURE)" IS NOTED.
 - PROPOSED MANHOLE 4 CAN BE ELIMINATED IF UPSTREAM STRUCTURE IS NOT FOUND IN PARKING LOT OR SEWER IS ABANDONED.
 - THE EXISTING WATER MAIN AT THE LOCATION OF VALVE VAULT W6A MAY BE 10' DEEP BASED ON INFORMATION FROM THE VILLAGE. THE COST TO RECONNECT 4" DUCTILE IRON WATER MAIN LINE TO DEEPER DEPTH OF WATER MAIN WILL BE INCLUDED IN THE COST OF THE CONTRACT.

MAIN STREET



ILLINOIS DEPARTMENT OF TRANSPORTATION

DRAINAGE & UTILITIES

MAIN STREET
STA. 105+00 TO STA. 110+00

HORIZ: 20
VERT: 5

SCALE IN FEET

DATE: 11/26/07
DESIGNED BY: JUC
CHECKED BY: JRV

REVISIONS	
NAME	DATE