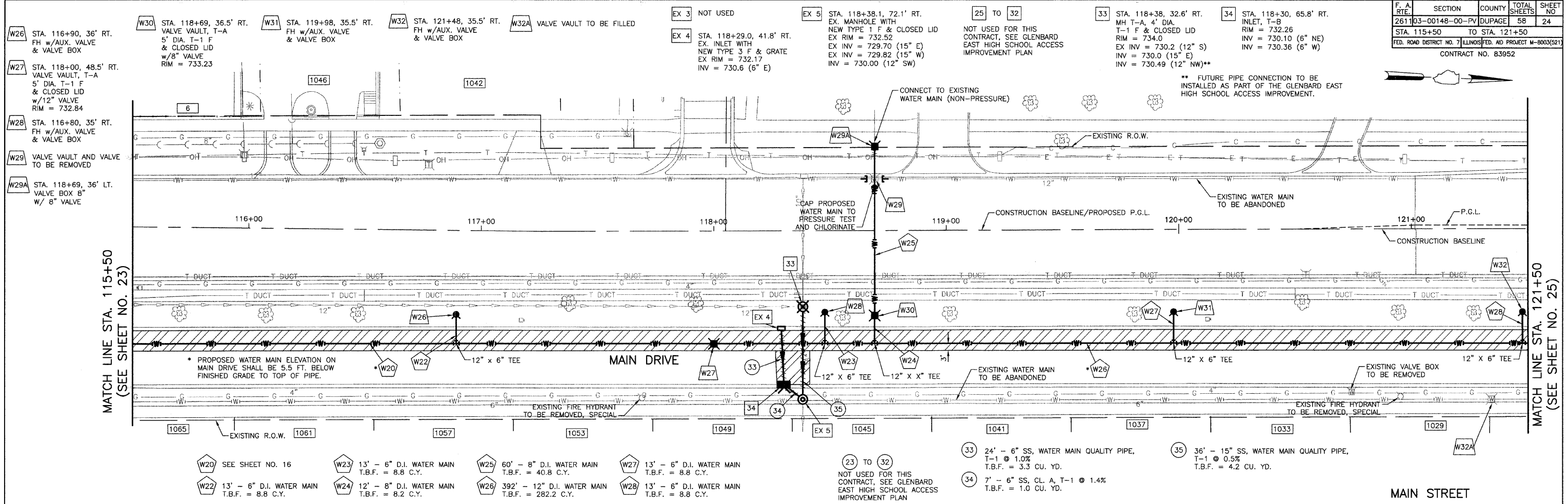


F. A. RTE.	SECTION	COUNTY	TOTAL SHEETS	SHEET NO.
261103-00148-00-PV	DUPAGE		58	24
STA. 115+50 TO STA. 121+50		CONTRACT NO. 83952		



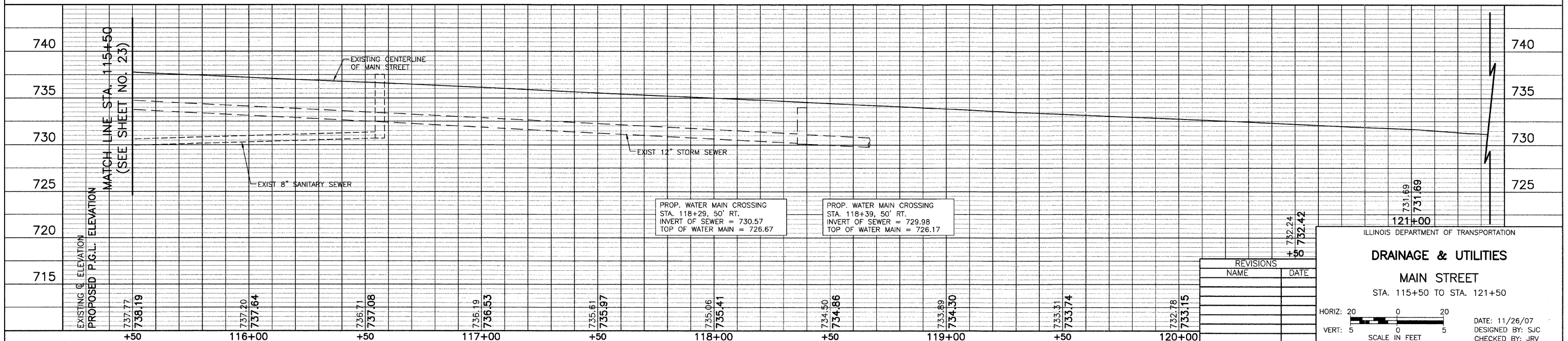
- W20 SEE SHEET NO. 16
- W22 13' - 6" D.I. WATER MAIN T.B.F. = 8.8 C.Y.
- W23 13' - 6" D.I. WATER MAIN T.B.F. = 8.8 C.Y.
- W24 12' - 8" D.I. WATER MAIN T.B.F. = 8.2 C.Y.
- W25 60' - 8" D.I. WATER MAIN T.B.F. = 40.8 C.Y.
- W26 392' - 12" D.I. WATER MAIN T.B.F. = 282.2 C.Y.
- W27 13' - 6" D.I. WATER MAIN T.B.F. = 8.8 C.Y.
- W28 13' - 6" D.I. WATER MAIN T.B.F. = 8.8 C.Y.
- 23 TO 32 NOT USED FOR THIS CONTRACT, SEE GLENBARD EAST HIGH SCHOOL ACCESS IMPROVEMENT PLAN
- 33 24' - 6" SS, WATER MAIN QUALITY PIPE, T-1 @ 1.0% T.B.F. = 3.3 CU. YD.
- 34 7' - 6" SS, CL. A, T-1 @ 1.4% T.B.F. = 1.0 CU. YD.
- 35 36' - 15" SS, WATER MAIN QUALITY PIPE, T-1 @ 0.5% T.B.F. = 4.2 CU. YD.

LEGEND

- CLASS D PATCH, 7"
- EXISTING STRUCTURE TO BE REMOVED
- EXISTING SEWER TO BE REMOVED

NOTES:

- WATER SERVICES ARE BEING REPLACED AT EACH ADDRESS ON MAIN STREET WITHIN THE PROJECT LIMIT WITH CORPORATION STOP AND WATER SERVICE LINE TO THE R.O.W.
- SANITARY SERVICES ARE BEING REPLACED AT EACH ADDRESS ON THE EAST SIDE OF MAIN STREET WITHIN THE PROJECT LIMIT WITH A SANITARY SEWER CLEAN OUT AND SANITARY SEWER SERVICE CONNECTION, TYPE 1, 2, OR 3 (SEE DETAIL SHEET) TO THE R.O.W. REPLACEMENT IS SHOWN DUE TO POTENTIAL CONFLICTS WITH NEW WATER MAIN INSTALLATION.
- WATER MAIN CONNECTIONS ARE NOT PAID FOR SEPARATELY BUT SHALL BE INCLUDED IN THE COST OF WATER MAIN PIPE AND FITTINGS USED TO MAKE THE CONNECTION UNLESS "CONNECT TO EXISTING WATER MAIN (NON-PRESSURE)" IS NOTED.
- WATER SERVICES TO PROPERTIES AONG EAST SIDE OF MAIN DRIVE SHALL BE TRANSFERRED TO THE NEW 12" MAIN. THE NEW SERVICES SHALL BE AUGERED UNDER MAIN DRIVE.
- WATER SERVICES TO PROPERTIES ALONG THE WEST SIDE OF MAIN STREET BETWEEN GLENBARD EAST HIGH SCHOOL AND CENTRAL AVENUE MUST BE TRANSFERRED TO THE NEW 12" MAIN PRIOR TO TAKING EXISTING MAIN OUT OF SERVICE.
- CONTRACTOR SHALL EXERCISE CARE WHEN INSTALLING WATER MAIN ON MAIN DRIVE TO AVOID DAMAGING THE EXISTING CURB AND GUTTER. ANY DAMAGES TO THE EXISTING CURB AND GUTTER SHALL BE REPLACED AT THE CONTRACTOR'S EXPENSE.



REVISIONS	
NAME	DATE

ILLINOIS DEPARTMENT OF TRANSPORTATION

DRAINAGE & UTILITIES

MAIN STREET

STA. 115+50 TO STA. 121+50

HORIZ: 20
VERT: 5

SCALE IN FEET

DATE: 11/26/07
DESIGNED BY: SJC
CHECKED BY: JRV