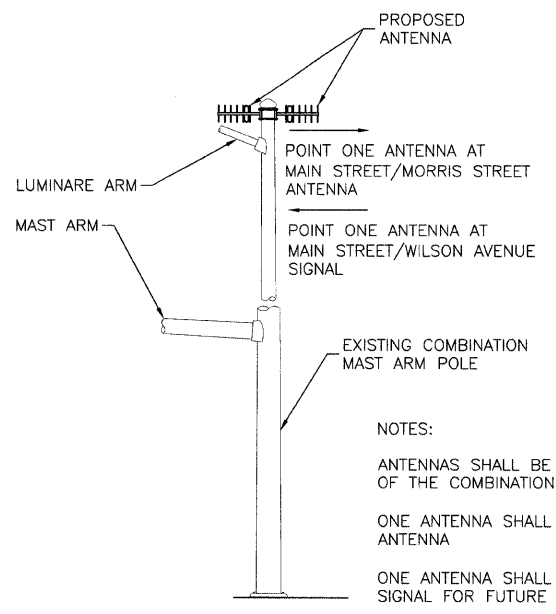
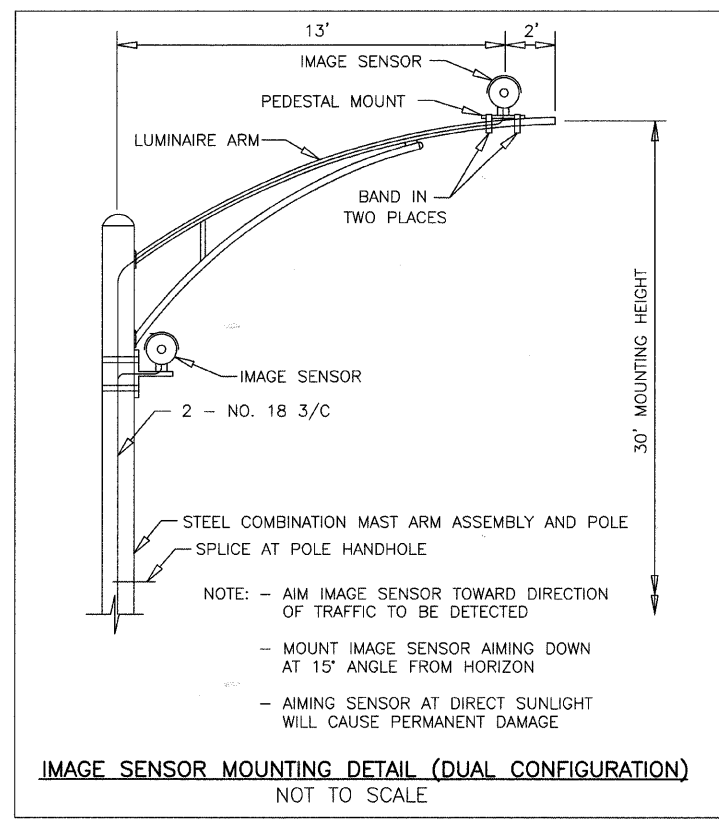
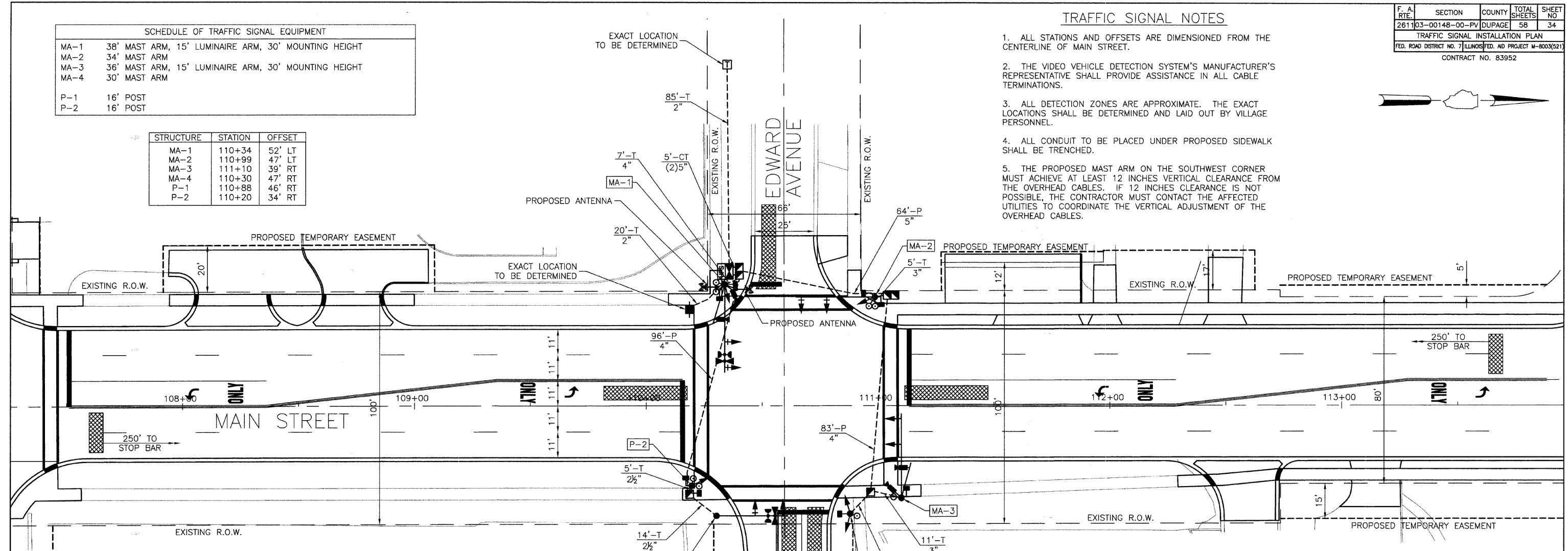


TRAFFIC SIGNAL NOTES

- ALL STATIONS AND OFFSETS ARE DIMENSIONED FROM THE CENTERLINE OF MAIN STREET.
- THE VIDEO VEHICLE DETECTION SYSTEM'S MANUFACTURER'S REPRESENTATIVE SHALL PROVIDE ASSISTANCE IN ALL CABLE TERMINATIONS.
- ALL DETECTION ZONES ARE APPROXIMATE. THE EXACT LOCATIONS SHALL BE DETERMINED AND LAID OUT BY VILLAGE PERSONNEL.
- ALL CONDUIT TO BE PLACED UNDER PROPOSED SIDEWALK SHALL BE TRENCHED.
- THE PROPOSED MAST ARM ON THE SOUTHWEST CORNER MUST ACHIEVE AT LEAST 12 INCHES VERTICAL CLEARANCE FROM THE OVERHEAD CABLES. IF 12 INCHES CLEARANCE IS NOT POSSIBLE, THE CONTRACTOR MUST CONTACT THE AFFECTED UTILITIES TO COORDINATE THE VERTICAL ADJUSTMENT OF THE OVERHEAD CABLES.

MA-1	38' MAST ARM, 15' LUMINAIRE ARM, 30' MOUNTING HEIGHT
MA-2	34' MAST ARM
MA-3	36' MAST ARM, 15' LUMINAIRE ARM, 30' MOUNTING HEIGHT
MA-4	30' MAST ARM
P-1	16' POST
P-2	16' POST

STRUCTURE	STATION	OFFSET
MA-1	110+34	52' LT
MA-2	110+99	47' LT
MA-3	111+10	39' RT
MA-4	110+30	47' RT
P-1	110+88	46' RT
P-2	110+20	34' RT



	EXISTING	PROPOSED		EXISTING	PROPOSED
CONTROLLER			CAST IRON JUNCTION BOX		
SERVICE INSTALLATION			EMERGENCY VEHICLE SYSTEM DETECTOR		
SIGNAL HEAD			CONFIRMATION BEACON		
SIGNAL HEAD WITH BACKPLATE			SIGNAL HEAD OPTICALLY PROGRAMMED		
SIGNAL HEAD, PEDESTRIAN			CONDUIT SPLICE		
SIGNAL POST			WOOD POLE		
MAST ARM ASSEMBLY AND POLE, STEEL			RACEWAY FOR MAGNETIC DETECTOR, TYPE I OR TYPE II		
MAST ARM ASSEMBLY AND POLE, ALUMINUM			VEHICLE DETECTOR, NON COMPENSATED MAGNETIC TYPE		
COMBINATION MAST ARM ASSEMBLY AND POLE, STEEL WITH LUMINAIRE			RAILROAD CONTROLLER		
COMMON TRENCH			TELEPHONE CONNECTION		
UNIT DUCT			ILLUMINATED SIGN, "NO LEFT TURN"		
HANDHOLE			ILLUMINATED SIGN, "NO RIGHT TURN"		
HEAVY DUTY HANDHOLE			IMAGE SENSOR		
DOUBLE HANDHOLE			PROPOSED ANTENNA		
G.S. CONDUIT IN TRENCH OR PUSHED			DETECTOR ZONE		
PEDESTRIAN PUSHBUTTON DETECTOR					
DETECTOR LOOP					
UNINTERRUPTIBLE POWER SUPPLY					

THE TRAFFIC SIGNAL CONTROL EQUIPMENT FOR THIS PROJECT SHALL BE "ECONOLITE" BRAND.

NAME	DATE