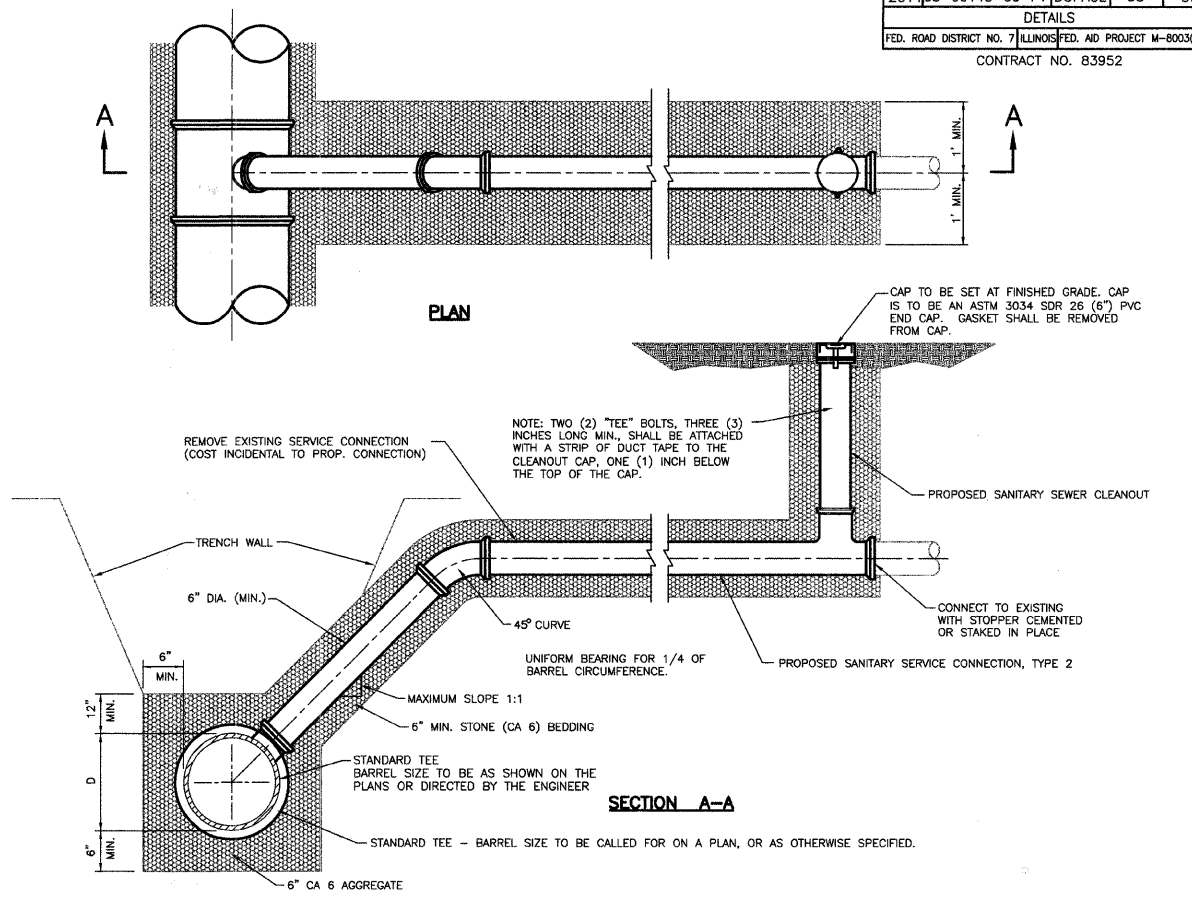
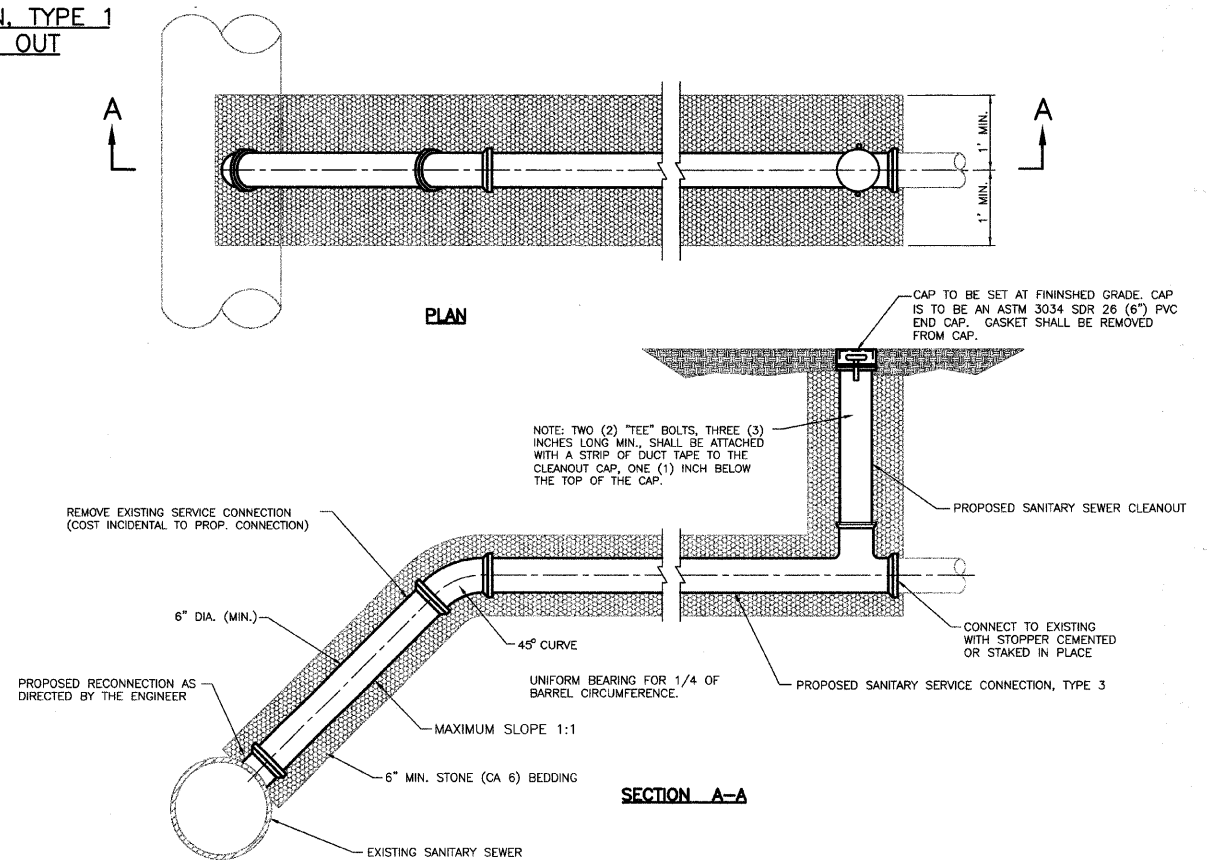


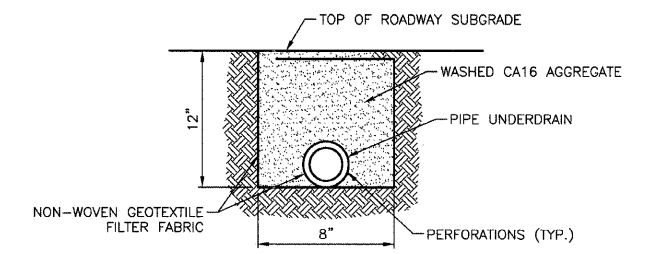
SANITARY SERVICE CONNECTION, TYPE 1 & SANITARY SEWER CLEAN OUT



SANITARY SERVICE CONNECTION, TYPE 2 & SANITARY SEWER CLEAN OUT



SANITARY SERVICE CONNECTION, TYPE 3 & SANITARY SEWER CLEAN OUT



- GENERAL NOTES:**
- BOTH THE TRENCH AND DRAIN TILE SHALL BE WRAPPED WITH NON-WOVEN GEOTEXTILE FILTER FABRIC.
 - WASHED AGGREGATE SHALL BE PLACED AROUND THE DRAIN TILE.
 - HOLE SHALL BE DRILLED INTO STRUCTURE.
 - HYDRAULIC CEMENT SHALL BE PLACED AROUND THE PIPE TO SEAL THE OPENING, BOTH INSIDE AND OUTSIDE THE STRUCTURE.

PIPE UNDERDRAIN, FABRIC LINED TRENCH, 4"

REVISIONS	
NAME	DATE

ILLINOIS DEPARTMENT OF TRANSPORTATION

DETAILS

MAIN STREET

DATE: 11/26/07
DESIGNED BY: SJC
CHECKED BY: JRV