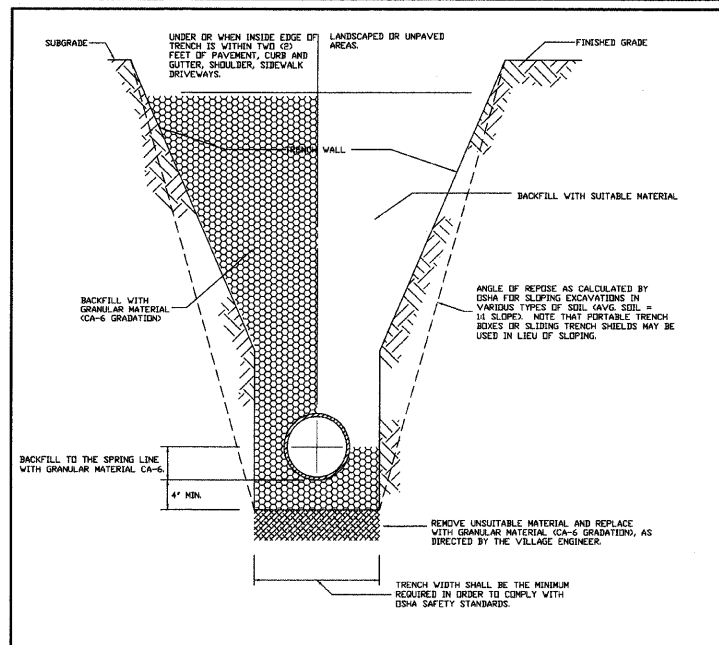


**GENERAL NOTES:**

1. WHEN THE FRAME DOES NOT MEET PROPOSED ELEVATION, A MINIMUM OF TWO TAPERED RUBBERIZED ADJUSTING RINGS SHALL BE USED FOR FINAL ADJUSTMENT. ONE CONCRETE RING NOT LESS THAN TWO INCHES THICK MAY ALSO BE USED. A MAXIMUM OF THREE ADJUSTING RINGS MAY BE USED TO A MAXIMUM HEIGHT OF 12 INCHES. THE RINGS AND FRAME SHALL BE SET ON A BED OF NON-HARDENING BUCKET MASTIC.
2. PRECAST ADJUSTING RINGS SHALL BE REINFORCED WITH NO. 3 GAUGE WIRE OR EQUIVALENT AND SHALL HAVE A MINIMUM THICKNESS OF TWO (2) INCHES.
3. MORTAR SHALL NOT BE USED TO DRESS UP ADJUSTING RINGS.
4. ALL REMOVABLE CASTINGS SHALL BE ORIENTED SO THE OPENING IN THE GRATE PROVIDES THE MAXIMUM HYDRAULIC EFFICIENCY.

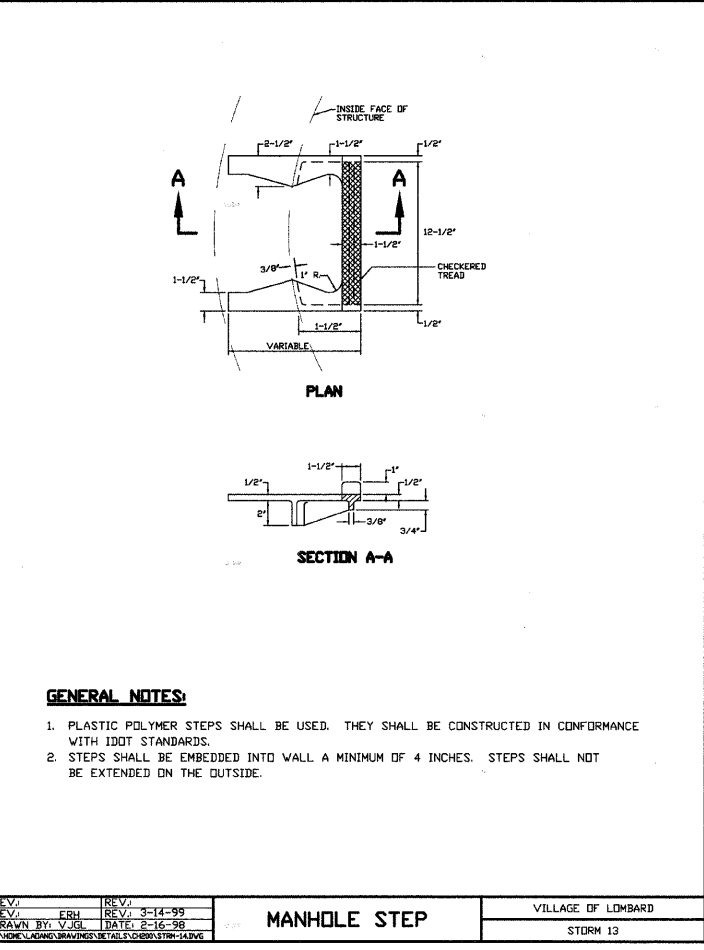
REV. 1	ERH	REV. 12-06-05	CASTING ADJUSTMENTS FOR STRUCTURES IN THE CURB LINE	VILLAGE OF LOMBARD
REV. 2	ERH	REV. 3-16-99		STORM 8
DRAWN BY:	V.JGL	DATE: 2-16-98		



**GENERAL NOTES:**

1. CONTRACTOR SHALL CONDUCT HIS OPERATIONS IN A SAFE MANNER AT ALL TIMES AND SHALL COMPLY WITH ALL APPLICABLE GOVERNING REGULATIONS, INCLUDING BUT NOT LIMITED TO OSHA SAFETY STANDARDS.
2. ALL BACKFILL MATERIAL UP TO A HEIGHT OF 12 INCHES ABOVE THE PIPE SHALL BE CAREFULLY DEPOSITED IN UNIFORM LAYERS NOT EXCEEDING 8 INCHES THICK (CLOSE MEASURE). THE MATERIAL IN EACH LAYER SHALL BE FIRMLY COMPACTED BY RAMMING OR TAMPING WITH TOOLS APPROVED BY THE VILLAGE ENGINEER IN SUCH A MANNER AS NOT TO DISTURB OR INJURE THE PIPE. THE BACKFILLING ABOVE THIS HEIGHT SHALL BE DONE AS NOTED BELOW.
3. GRANULAR BACKFILL MATERIAL SHALL BE PLACED AND COMPACTED AS SPECIFIED IN NOTE 2. ABOVE. THE USE OF JETTING SHALL NOT BE ALLOWED UNLESS AUTHORIZED IN WRITING BY THE VILLAGE ENGINEER. IT SHALL BE THE DESIGN ENGINEER OR CONTRACTOR'S RESPONSIBILITY TO PROVIDE APPROPRIATE JUSTIFICATION AND DOCUMENTATION (SOIL INVESTIGATION REPORTS, ETC.) TO THE VILLAGE ENGINEER WITH THE REQUEST FOR APPROVAL OF JETTING.

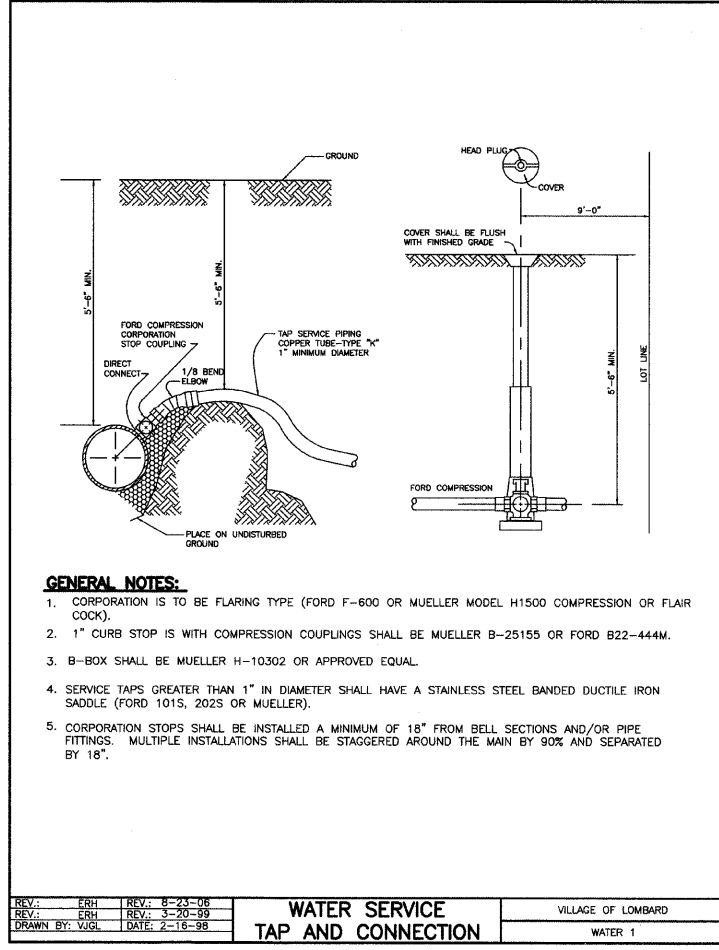
REV. 1	ERH	REV. 7-14-99	STORM SEWER TRENCH SECTION	VILLAGE OF LOMBARD
REV. 2	ERH	REV. 2-16-98		STORM 11
DRAWN BY:	V.JGL	DATE: 2-16-98		



**GENERAL NOTES:**

1. PLASTIC POLYMER STEPS SHALL BE USED. THEY SHALL BE CONSTRUCTED IN CONFORMANCE WITH IDOT STANDARDS.
2. STEPS SHALL BE EMBEDDED INTO WALL A MINIMUM OF 4 INCHES. STEPS SHALL NOT BE EXTENDED ON THE OUTSIDE.

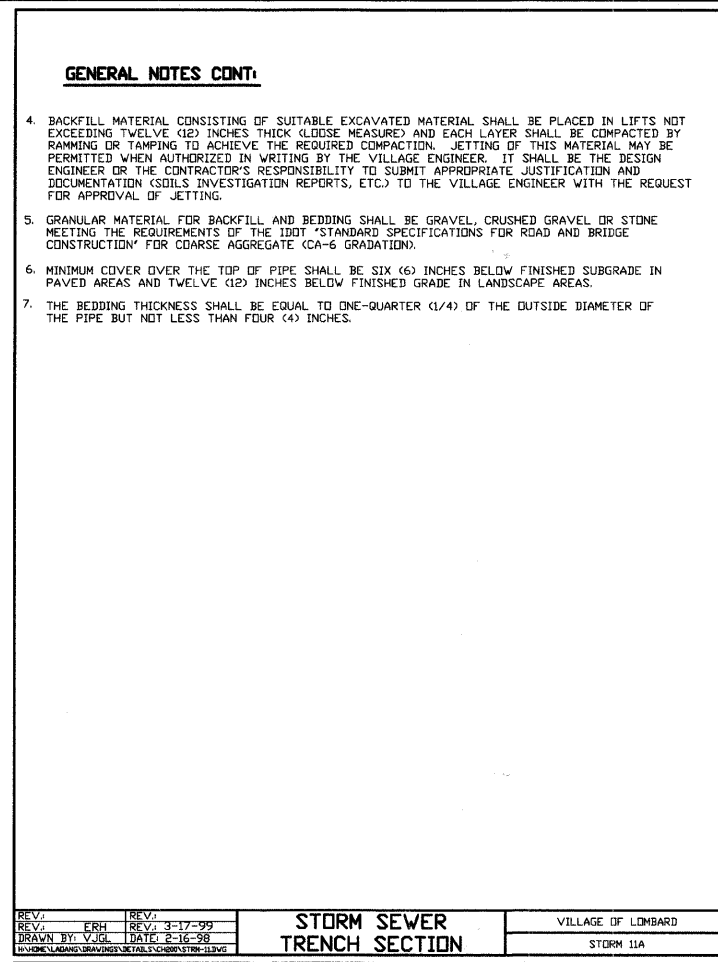
REV. 1	ERH	REV. 3-14-99	MANHOLE STEP	VILLAGE OF LOMBARD
REV. 2	ERH	REV. 2-16-98		STORM 13
DRAWN BY:	V.JGL	DATE: 2-16-98		



**GENERAL NOTES:**

1. CORPORATION IS TO BE FLARING TYPE (FORD F-600 OR MUELLER MODEL H1500 COMPRESSION OR FLAIR COCK).
2. 1\"/>

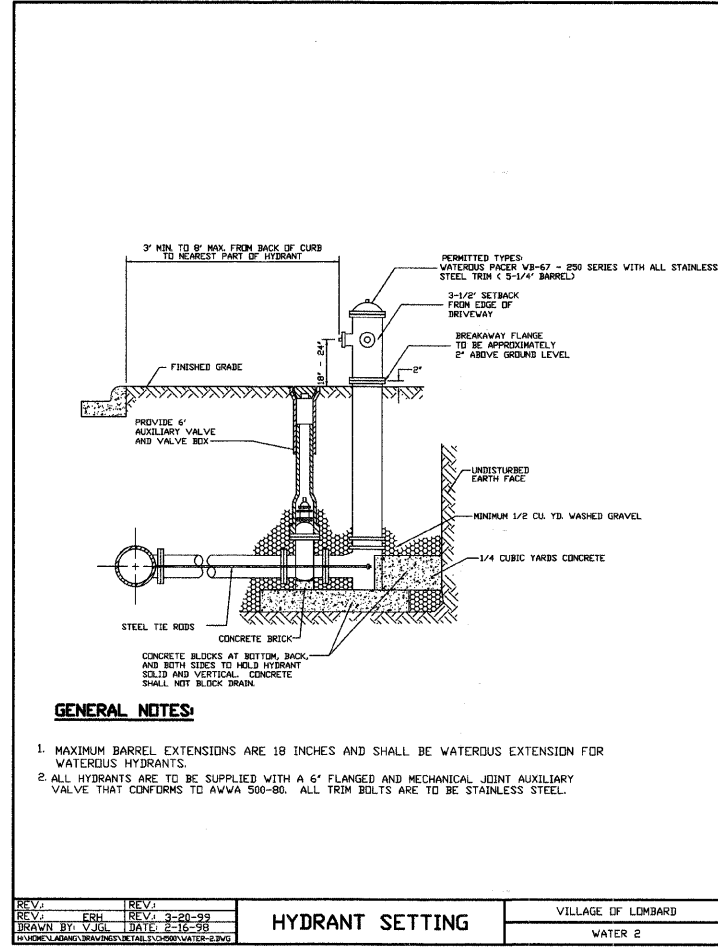
REV. 1	ERH	REV. 8-23-06	WATER SERVICE TAP AND CONNECTION	VILLAGE OF LOMBARD
REV. 2	ERH	REV. 3-20-99		WATER 1
DRAWN BY:	V.JGL	DATE: 2-16-98		



**GENERAL NOTES CONT.:**

4. BACKFILL MATERIAL CONSISTING OF SUITABLE EXCAVATED MATERIAL SHALL BE PLACED IN LIFTS NOT EXCEEDING TWELVE (12) INCHES THICK (CLOSE MEASURE) AND EACH LAYER SHALL BE COMPACTED BY RAMMING OR TAMPING TO ACHIEVE THE REQUIRED COMPACTION. JETTING OF THIS MATERIAL MAY BE PERMITTED WHEN AUTHORIZED IN WRITING BY THE VILLAGE ENGINEER. IT SHALL BE THE DESIGN ENGINEER OR THE CONTRACTOR'S RESPONSIBILITY TO SUBMIT APPROPRIATE JUSTIFICATION AND DOCUMENTATION (SOILS INVESTIGATION REPORTS, ETC.) TO THE VILLAGE ENGINEER WITH THE REQUEST FOR APPROVAL OF JETTING.
5. GRANULAR MATERIAL FOR BACKFILL AND BEDDING SHALL BE GRAVEL, CRUSHED GRAVEL OR STONE MEETING THE REQUIREMENTS OF THE IDOT STANDARD SPECIFICATIONS FOR ROAD AND BRIDGE CONSTRUCTION FOR COARSE AGGREGATE (CA-6 GRADATION).
6. MINIMUM COVER OVER THE TOP OF PIPE SHALL BE SIX (6) INCHES BELOW FINISHED SUBGRADE IN PAVED AREAS AND TWELVE (12) INCHES BELOW FINISHED GRADE IN LANDSCAPE AREAS.
7. THE BEDDING THICKNESS SHALL BE EQUAL TO ONE-QUARTER (1/4) OF THE OUTSIDE DIAMETER OF THE PIPE BUT NOT LESS THAN FOUR (4) INCHES.

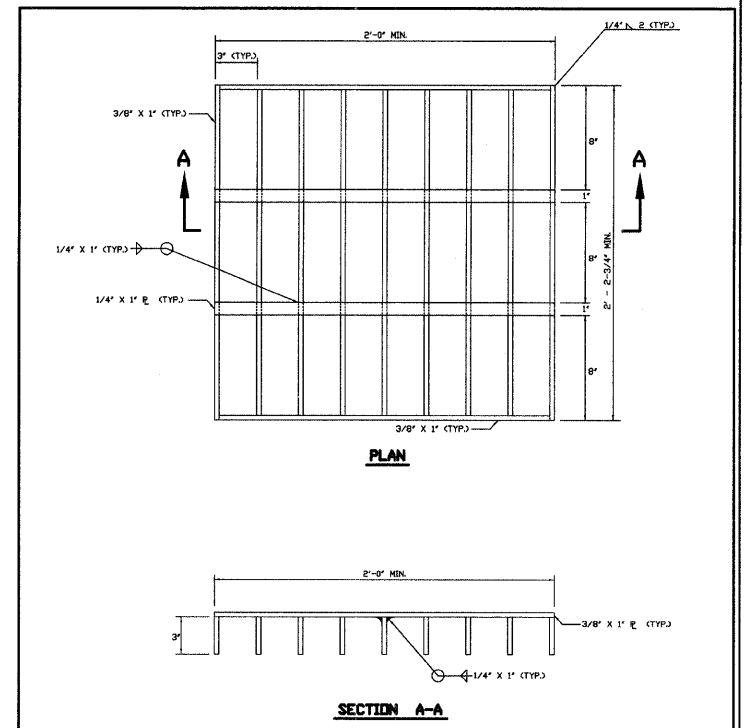
REV. 1	ERH	REV. 3-17-99	STORM SEWER TRENCH SECTION	VILLAGE OF LOMBARD
REV. 2	ERH	REV. 2-16-98		STORM 11A
DRAWN BY:	V.JGL	DATE: 2-16-98		



**GENERAL NOTES:**

1. MAXIMUM BARREL EXTENSIONS ARE 18 INCHES AND SHALL BE WATERLOUS EXTENSION FOR WATERLOUS HYDRANTS.
2. ALL HYDRANTS ARE TO BE SUPPLIED WITH A 6\"/>

REV. 1	ERH	REV. 3-20-99	HYDRANT SETTING	VILLAGE OF LOMBARD
REV. 2	ERH	REV. 2-16-98		WATER 2
DRAWN BY:	V.JGL	DATE: 2-16-98		



**GENERAL NOTES:**

1. STRUCTURAL STEEL SHAPES AND PLATES SHALL BE IN ACCORDANCE WITH ARTICLE 505.02 OF THE STANDARD SPECIFICATIONS FOR ROAD AND BRIDGE CONSTRUCTION, LATEST EDITION.
2. ALL FABRICATIONS SHALL BE COMPLETED AND READY FOR INSTALLATION BEFORE GALVANIZING.
3. GRATES SHALL BE BOLTED DOWN.

REV. 1	ERH	REV. 3-14-99	STORM SEWER GRATE FOR BOX INLET	VILLAGE OF LOMBARD
REV. 2	ERH	REV. 2-16-98		STORM 12
DRAWN BY:	V.JGL	DATE: 2-16-98		

**GENERAL NOTES:**

1. When the frame does not meet proposed elevation, a maximum of two precast concrete rings may be used to a maximum height of 8 inches. The ring(s) shall be set in a bed of preformed non-hardening mastic (Rub-R-Nek or approved equal).
2. Valve must align with center of vault opening.
3. Cones must be concentric with valves 12\"/>

REVISIONS	
NAME	DATE

ILLINOIS DEPARTMENT OF TRANSPORTATION

**DETAILS**

**MAIN STREET**

DATE: 11/26/07  
DESIGNED BY: SJC  
CHECKED BY: JRV