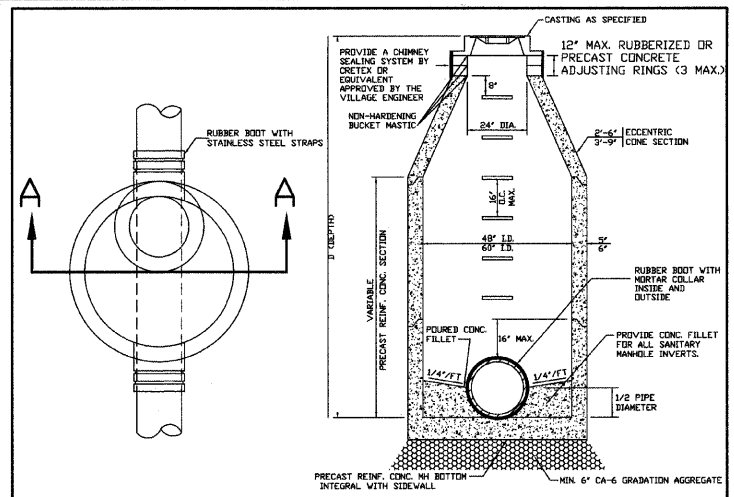


SECTION A-A

GENERAL NOTES:

- BOTH THE TRENCH AND DRAIN TILE SHALL BE WRAPPED WITH NON-WOVEN GEOTEXTILE FILTER FABRIC.
- WASHED AGGREGATE SHALL BE PLACED AROUND THE DRAIN TILE.
- HOLE SHALL BE CORED DRILLED INTO STRUCTURE.
- HYDRAULIC CEMENT SHALL BE PLACED AROUND THE PIPE TO SEAL THE OPENING, BOTH INSIDE AND OUTSIDE THE STRUCTURE.

REV. 1	FRH	REV. 1	3-14-99	SUBSURFACE DRAIN TILE CONNECTION	VILLAGE OF LOMBARD
DRAWN BY: V.JGL	DATE: 2-16-98				STORM 9

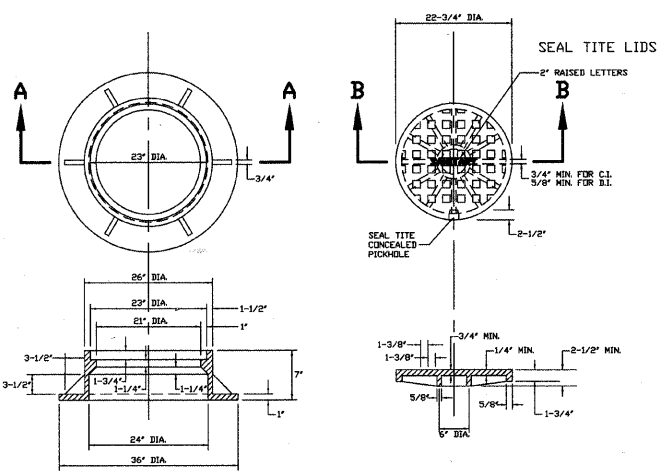


PLAN SECTION A-A

GENERAL NOTES:

- PROVIDE PRECAST REINFORCED CONCRETE BARREL AND RISER SECTION. CONCRETE BLOCK CONSTRUCTION IS NOT PERMITTED.
- PROVIDE SELECT GRANULAR BACKFILL AROUND MANHOLE TO SUBGRADE ELEVATION IN PAVED AREAS. MATERIAL SHALL MEET THE REQUIREMENTS OF IDOT STANDARD SPECIFICATIONS FOR ROAD AND BRIDGE CONSTRUCTION. COARSE AGGREGATE CA-6 GRADATION, OR AS OTHERWISE DIRECTED BY THE VILLAGE ENGINEER.
- APPLY A CONTINUOUS LAYER OF NON-HARDENING PREFORMED BITUMINOUS MASTIC MATERIAL (RUB-R-NEK OR EZ STICK) TO EACH JOINT BELOW THE BOTTOM OF CONE OR FLATTOP TO PREVENT INFLOW.
- WHEN THE FRAME DOES NOT MEET PROPOSED ELEVATION, A MINIMUM OF TWO TAPERED RUBBERIZED ADJUSTING RINGS SHALL BE USED FOR FINAL ADJUSTMENT. ONE CONCRETE RING NOT LESS THAN TWO INCHES THICK MAY ALSO BE USED. A MAXIMUM OF THREE ADJUSTING RINGS MAY BE USED TO A MAXIMUM HEIGHT OF 12 INCHES. THE RING(S) AND FRAME SHALL BE SET ON A BED OF NON-HARDENING BUCKET MASTIC.
- PRECAST ADJUSTING RINGS SHALL BE REINFORCED WITH NO. 3 GAUGE WIRE OR EQUIVALENT.
- MORTAR SHALL NOT BE USED TO DRESS UP ADJUSTING RINGS AND/OR FRAME.
- ONLY PLASTIC POLYMER STEPS SHALL BE USED.
- WHEN MANHOLE DEPTH IS OVER 12 FEET, THE THICKNESS OF THE BASE SHALL BE A MINIMUM OF 10 INCHES. WHEN MANHOLE DEPTH IS LESS THAN 12 FEET, THE THICKNESS SHALL BE A MINIMUM OF 8 INCHES.
- DRESS UP INTERIOR JOINTS WITH HYDRAULIC CEMENT.
- SANITARY MANHOLES SHALL BE CONSTRUCTED WITH A CHIMNEY SEALING SYSTEM BY CRETEX OR AN EQUAL APPROVED BY THE VILLAGE. CHIMNEY SEALS SHALL BE REQUIRED UNLESS THE MANHOLE IS ADJUSTED TO FINAL GRADE IN ACCORDANCE WITH VILLAGE DETAIL STORM 7 - CASTING ADJUSTMENTS FOR STRUCTURES IN PAVED AREAS.

REV. 1	FRH	REV. 1	7-14-99	SANITARY MANHOLE	VILLAGE OF LOMBARD
DRAWN BY: V.JGL	DATE: 2-16-98				SANITARY 1



SECTION A-A CAST FRAME SECTION B-B CAST CLOSED LID

GENERAL NOTES:

- DUCTILE IRON CASTING SHALL BE TESTED IN ACCORDANCE WITH FEDERAL SPECIFICATIONS.
- ALL FRAMES AND COVERS SHALL HAVE A MACHINED HORIZONTAL AND VERTICAL BEARING SURFACES. PICK HOLES IN THE COVER SHALL NOT BE OPEN.
- THE MANHOLE COVERS SHALL HAVE RAISED LETTERS AS SHOWN.
- DIMENSIONS FOR CASTINGS ARE COMPARABLE TO EAST JORDAN IRON WORKS, INC. 1022-3 OR NEENAH FOUNDRY 1772-C FURNISHED WITH TYPE F CONCEALED PICK HOLES.
- WATERPROOF, BOLTDOWN FRAME AND COVER SHALL BE USED IN ANY LOCATION SUBJECT TO INUNDATION. (NEENAH R-1916-F, EAST JORDAN 1022-3 WT WITH TYPE 5 CLOSED PICK HOLES OR APPROVED EQUAL).

REV. 1	FRH	REV. 1	3-20-99	SANITARY MANHOLE FRAME AND COVER	VILLAGE OF LOMBARD
DRAWN BY: V.JGL	DATE: 2-16-98				SANITARY 3

REVISIONS	
NAME	DATE

ILLINOIS DEPARTMENT OF TRANSPORTATION

DETAILS

MAIN STREET

DATE: 11/26/07
DESIGNED BY: SJC
CHECKED BY: JRW