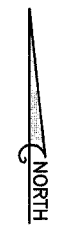
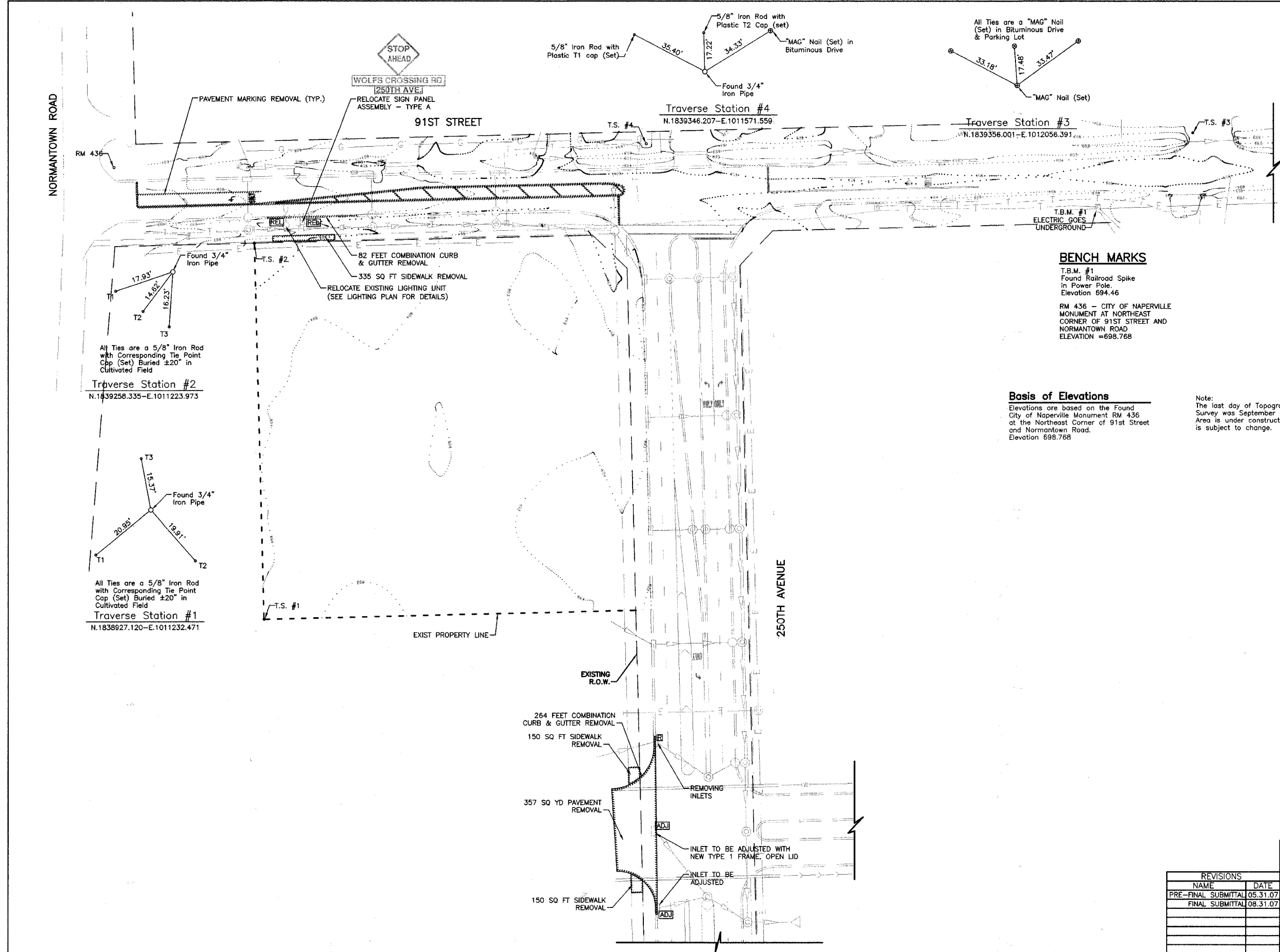


FILE NO.	SECTION	COUNTY	TOTAL SHEETS	SHEET NO.
*	06-00132-00-PK	WILL	15	4
STA.	..*	TO STA.	* ..	
		LINKS		

CONTRACT NUMBER 83974



GRAPHIC SCALE



BENCH MARKS

T.B.M. #1
 Found Railroad Spike
 in Power Pole.
 Elevation 694.46

RM 436 - CITY OF NAPERVILLE
 MONUMENT AT NORTHEAST
 CORNER OF 91ST STREET AND
 NORMANTOWN ROAD
 ELEVATION = 698.768

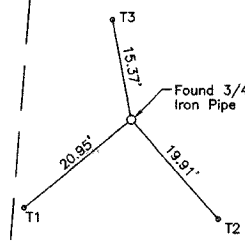
Basis of Elevations

Elevations are based on the Found
 City of Naperville Monument RM 436
 at the Northeast Corner of 91st Street
 and Normantown Road.
 Elevation 698.768

Note:
 The last day of Topographic
 Survey was September 1, 2006.
 Area is under construction and
 is subject to change.

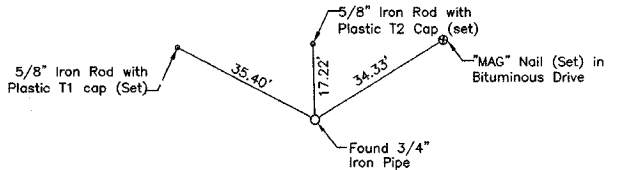
All Ties are a 5/8" Iron Rod
 with Corresponding Tie Point
 Cap (Set) Buried ±20" in
 Cultivated Field

Traverse Station #2
 N.1839258.335-E.1011223.973

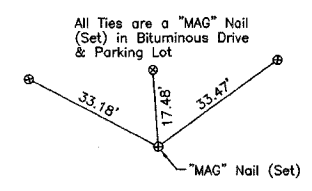


All Ties are a 5/8" Iron Rod
 with Corresponding Tie Point
 Cap (Set) Buried ±20" in
 Cultivated Field

Traverse Station #1
 N.1838927.120-E.1011232.471



Traverse Station #4
 N.1839346.207-E.1011571.559



Traverse Station #3
 N.1839356.001-E.1012056.391

REVISIONS	
NAME	DATE
PRE-FINAL SUBMITTAL	05.31.07
FINAL SUBMITTAL	08.31.07

CITY OF NAPERVILLE

EXISTING CONDITIONS AND DEMOLITION

95TH STREET PARK AND RIDE

SCALE IN FEET

DATE: 11/26/2007
 DESIGNED BY: RTM
 TECHNICIAN: JRR
 CHECKED BY: JRV