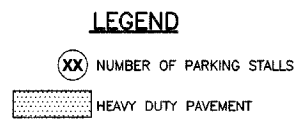
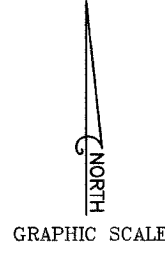
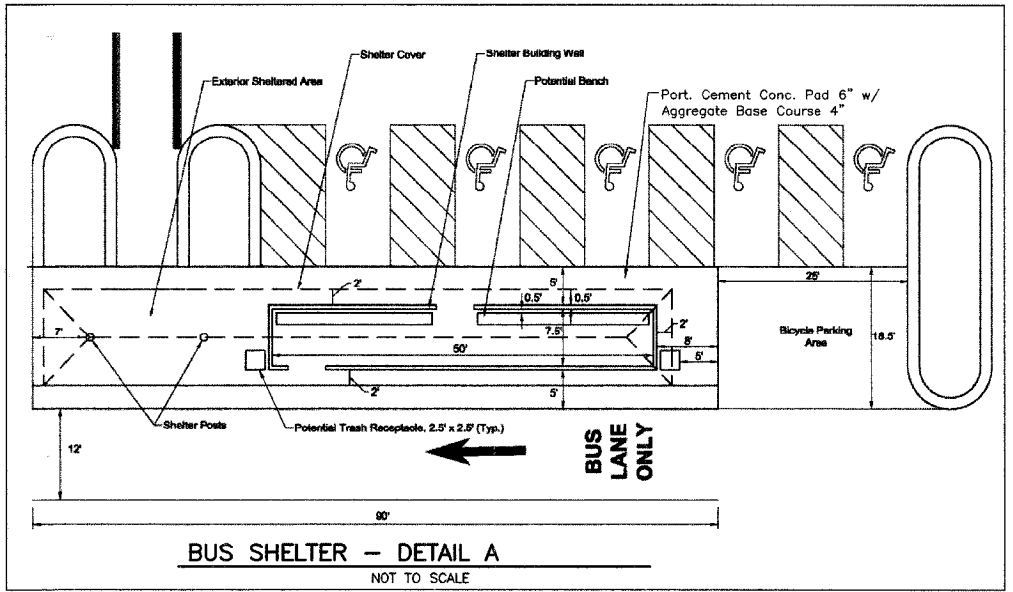
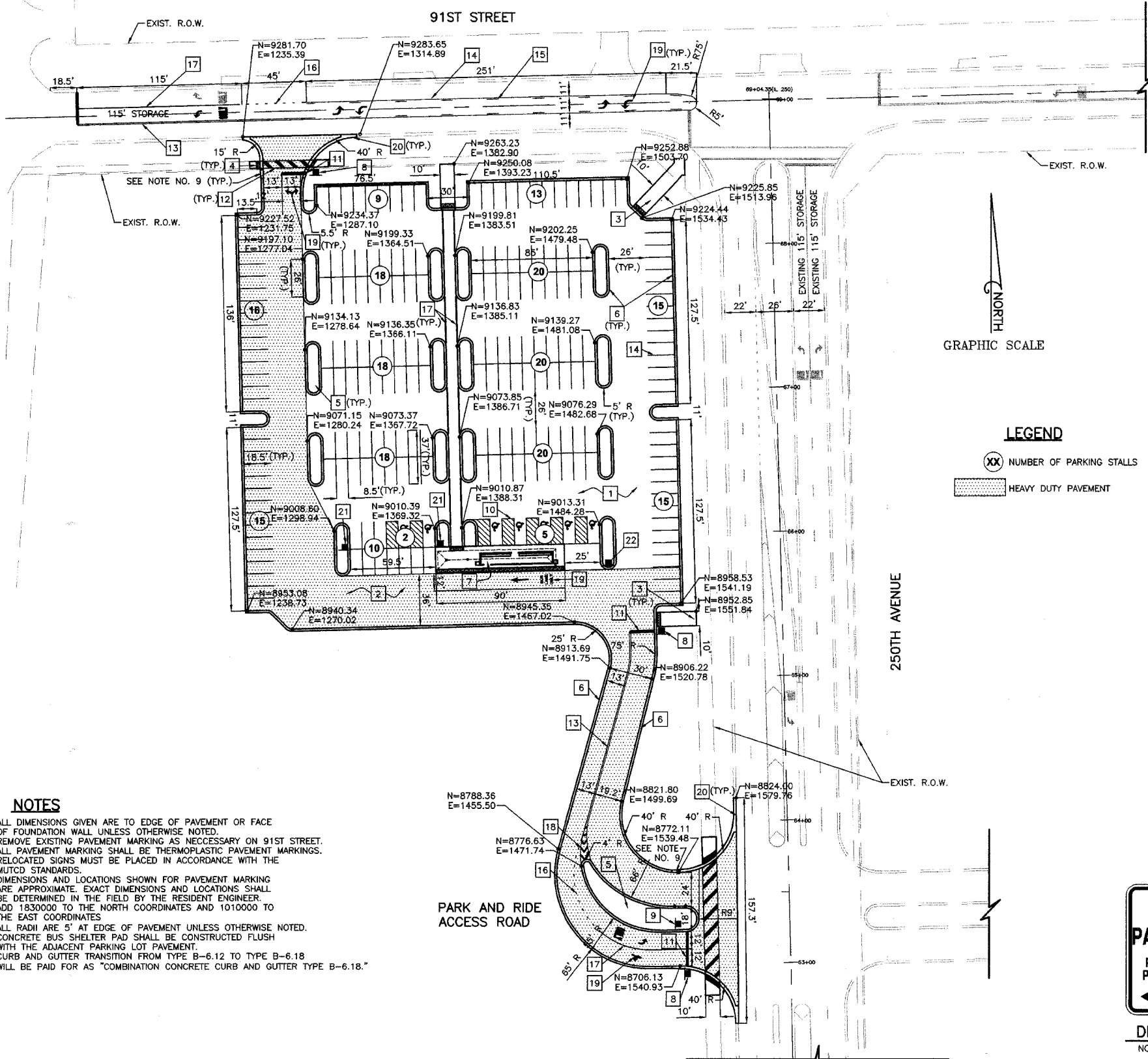


PARKING DATA
 TOTAL REGULAR PARKING 207
 TOTAL HANDICAP PARKING 7
 TOTAL PARKING 214

FILE NO.	SECTION	COUNTY	TOTAL SHEETS	SHEET NO.
* 06-00132-00-PK	WILL		15	6
STA.	..*	TO STA.	* .	
	ELWOOD			

CONTRACT NUMBER 83974

NORMANTOWN ROAD



KEYED NOTES

- PARKING AREA PAVEMENT, REF. PARKING AREA PAVEMENT DETAIL
- HEAVY DUTY PAVEMENT, REF. HEAVY DUTY PAVEMENT DETAIL
- P.C.C. SIDEWALK, 5" W/ AGGREGATE BASE COURSE TYPE B 2", REF. CITY OF NAPERVILLE STD. PVMT 3
- DETECTABLE WARNING
- TOPSOIL FURNISH & PLACE, 12" & SODDING
- COMBINATION CONCRETE CURB AND GUTTER, TYP B-6.12, REF. CITY OF NAPERVILLE STD. PVMT 12
- BUS SHELTER, REF. DETAIL A
- STOP SIGN, R1-1, SIGN PANEL TYPE 1 3636
- LEFT TURN ONLY SIGN, R3-5L, SIGN PANEL TYPE 1 2430
- ACCESSIBLE PARKING SPACE MARKINGS, REF. CITY OF NAPERVILLE STD. MISC 11
- WHITE STOP LINE, THPL PVT MK LINE, 24"
- CROSSWALK, REF. CITY OF NAPERVILLE STD. MISC 12
- DOUBLE YELLOW CENTERLINE, 11" C-C THPL PVT MK LINE, 4"
- YELLOW LANE LINE, THPL PVT MK LINE, 4"
- YELLOW LANE LINE, 10' LINE - 30' SPACE, THPL PVT MK LINE, 4"
- WHITE DOTTED LINE, THPL PVT MK LINE, 6" (2' LINE WITH 6" SPACE)
- WHITE LANE LINE, THPL PVT MK LINE, 6"
- WHITE CHANNELIZATION MARKINGS @ 45', THPL PVT MK LINE, 12"
- WHITE LETTERS AND ARROWS, THPL PVT MK LTR & SYM
- COMBINATION CONCRETE CURB AND GUTTER, TYP B-6.18, REF. CITY OF NAPERVILLE STD. PVMT 12
- PACE VAN POOL PARKING SIGN, SPECIAL, SIGN PANEL TYPE 1 1218, REF. DETAIL B
- KISS N' RIDE SIGN, SPECIAL, SIGN PANEL TYPE 1 1218, REF. DETAIL C

NOTES

- ALL DIMENSIONS GIVEN ARE TO EDGE OF PAVEMENT OR FACE OF FOUNDATION WALL UNLESS OTHERWISE NOTED.
- REMOVE EXISTING PAVEMENT MARKING AS NECESSARY ON 91ST STREET.
- ALL PAVEMENT MARKING SHALL BE THERMOPLASTIC PAVEMENT MARKINGS. RELOCATED SIGNS MUST BE PLACED IN ACCORDANCE WITH THE MUTCD STANDARDS.
- DIMENSIONS AND LOCATIONS SHOWN FOR PAVEMENT MARKING ARE APPROXIMATE. EXACT DIMENSIONS AND LOCATIONS SHALL BE DETERMINED IN THE FIELD BY THE RESIDENT ENGINEER.
- ADD 1830000 TO THE NORTH COORDINATES AND 1010000 TO THE EAST COORDINATES
- ALL RADII ARE 5' AT EDGE OF PAVEMENT UNLESS OTHERWISE NOTED.
- CONCRETE BUS SHELTER PAD SHALL BE CONSTRUCTED FLUSH WITH THE ADJACENT PARKING LOT PAVEMENT.
- CURB AND GUTTER TRANSITION FROM TYPE B-6.12 TO TYPE B-6.18 WILL BE PAID FOR AS "COMBINATION CONCRETE CURB AND GUTTER TYPE B-6.18."



REVISIONS	
NAME	DATE
PRE-FINAL SUBMITTAL	05.31.07
FINAL SUBMITTAL	08.31.07

CITY OF NAPERVILLE
SITE LAYOUT
 95TH STREET PARK AND RIDE

DATE: 11/26/2007
 DESIGNED BY: RTM
 TECHNICIAN: JRR
 CHECKED BY: JRV

