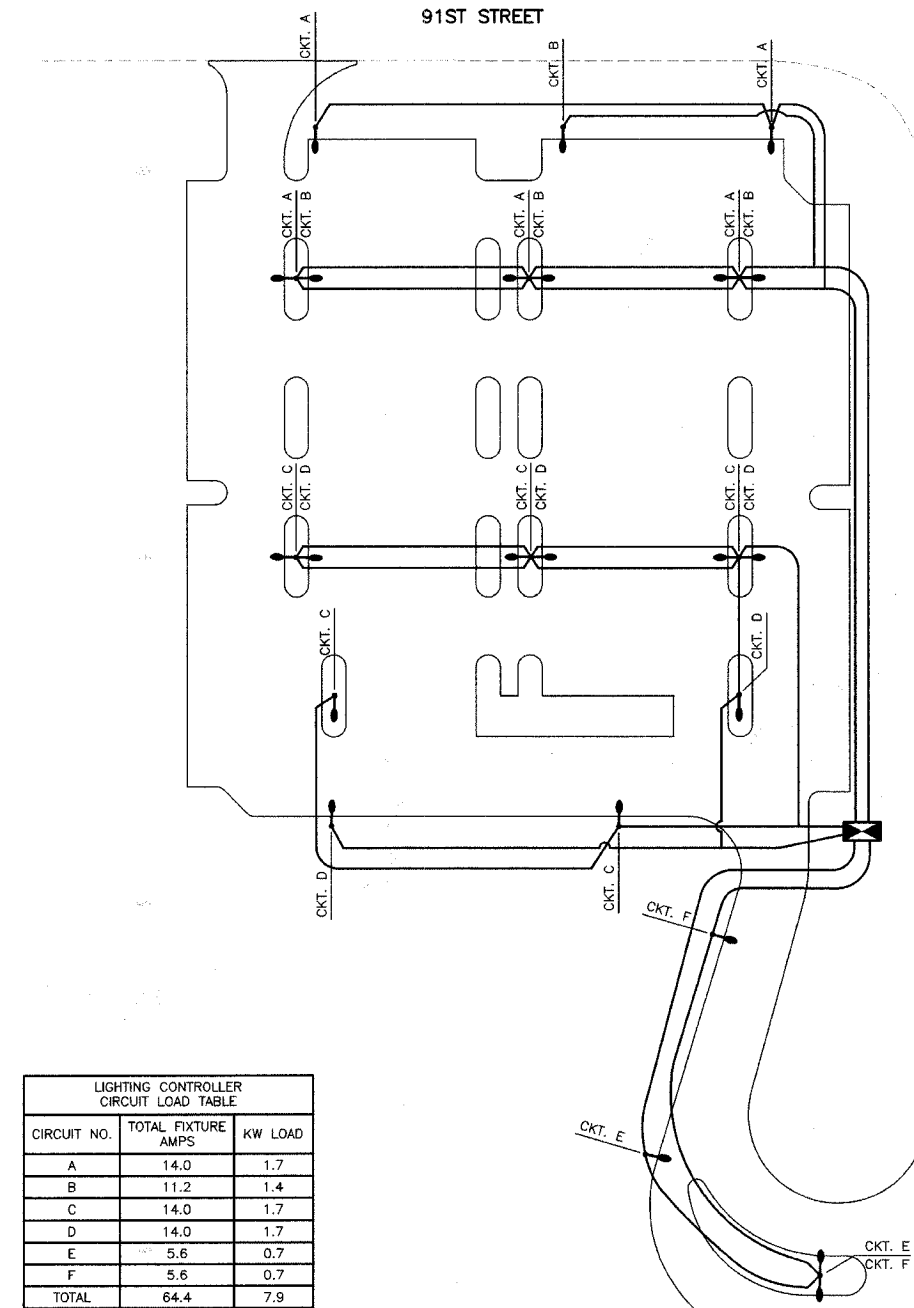


PAGE NO.	SECTION	COUNTY	TOTAL SHEETS	SHEET NO.
*	06-00132-00-PK	WILL.	15	9
STA.	**	TO STA.	*	*
	LINE			

CONTRACT NUMBER 83974

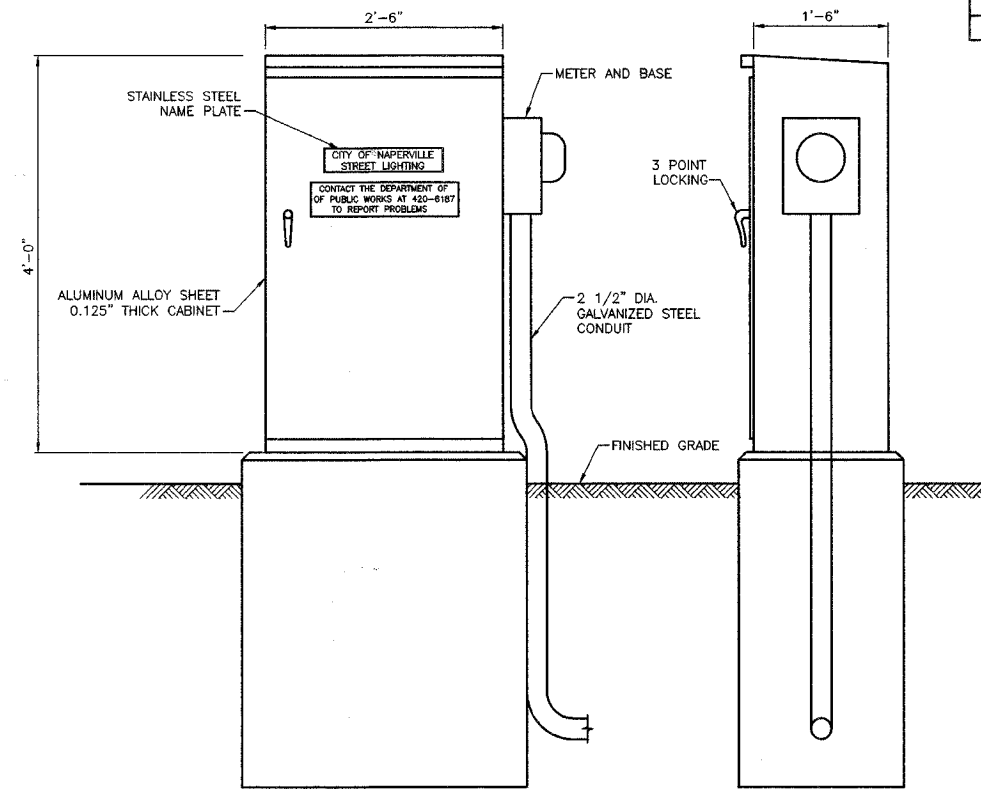


CIRCUIT NO.	TOTAL FIXTURE AMPS	KW LOAD
A	14.0	1.7
B	11.2	1.4
C	14.0	1.7
D	14.0	1.7
E	5.6	0.7
F	5.6	0.7
TOTAL	64.4	7.9

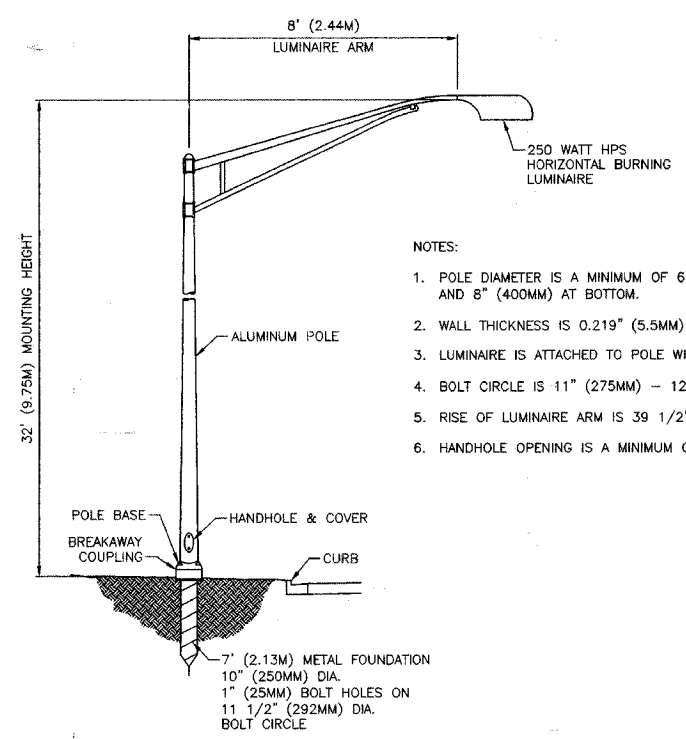
250W, 120V LUMINAIRE = 2.80 AMPS

- LEGEND**
- PROPOSED LIGHTING UNIT (DUAL)  
 LUMINAIRE: 2 LUMINAIRES AT 180°  
 250 WATT HPS, 120V  
 POLE: ROUND TAPERED ALUMINUM POLE,  
 32' M.H. WITH 8' M.A.
  - PROPOSED LIGHTING UNIT (SINGLE)  
 LUMINAIRE: 250 WATT HPS, 120V  
 POLE: ROUND TAPERED ALUMINUM POLE,  
 32' M.H. WITH 8' M.A.
  - PROPOSED LIGHTING CONTROLLER

CIRCUIT DIAGRAM

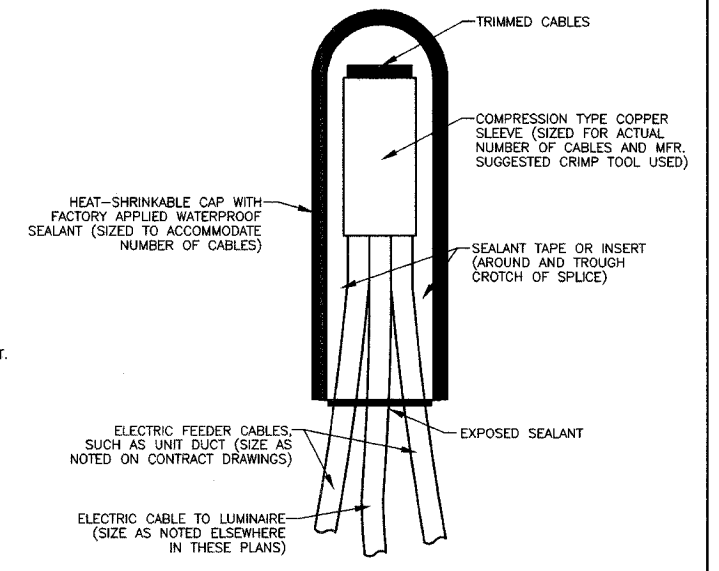


LIGHTING CONTROLLER, SPECIAL



- NOTES:
- POLE DIAMETER IS A MINIMUM OF 6" (150MM) AT TOP AND 8" (400MM) AT BOTTOM.
  - WALL THICKNESS IS 0.219" (5.5MM) MINIMUM.
  - LUMINAIRE IS ATTACHED TO POLE WITH CLAMP BRACKET.
  - BOLT CIRCLE IS 11" (275MM) - 12" (300MM).
  - RISE OF LUMINAIRE ARM IS 39 1/2" (1.0M).
  - HANDHOLE OPENING IS A MINIMUM OF 4" X 6".

32' (9.75M) ALUMINUM STREET LIGHTING WITH 8' MAST ARM



NOTE: NUMBER OF CABLES IN SPLICE MAY VARY  
**SPLICING ELECTRIC CABLES**  
**BASIC MATERIALS AND METHODS**

NO.	NAME	DATE
PRE-FINAL	SUBMITTAL	05.31.07
FINAL	SUBMITTAL	08.31.07

CITY OF NAPERVILLE

**LIGHTING PLAN DETAIL**

95TH STREET PARK AND RIDE

DATE: 11/26/2007  
 DESIGNED BY: DNM  
 TECHNICIAN: SJC  
 CHECKED BY: JRV