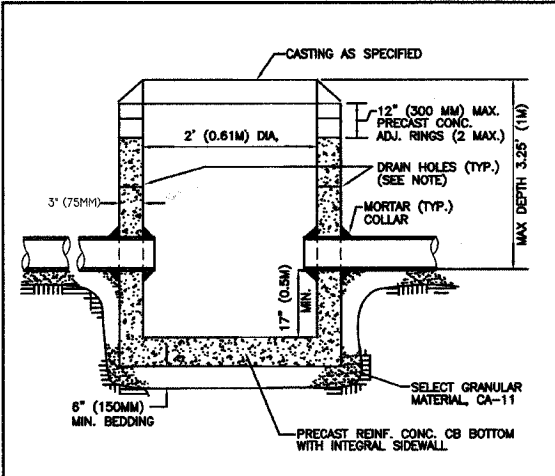


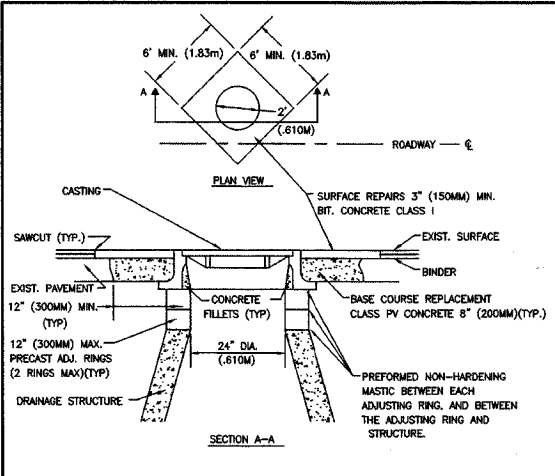
PANEL	SECTION	COUNTY	TOTAL SHEETS	SHEET NO
*	06-00132-00-PK	WILL	15	14
STA.	..*	TO STA.	*	*

CONTRACT NUMBER 83974



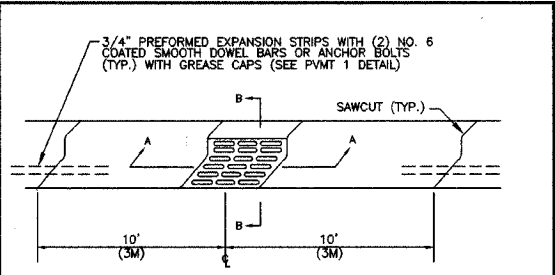
NOTE
A MINIMUM OF 4 PRECAST OR DRILLED 25 MM (1") DIAMETER HOLES SHALL BE PROVIDED WITHIN 300 MM (1') OF THE LOWEST PIPE INVERT. THE HOLES SHALL BE DISTRIBUTED EQUIDISTANT AROUND THE PERIMETER OF THE STRUCTURE. A 300 MM (1') BY 300 MM (1') SQUARE OF UNDERDRAIN FILTER CLOTH MATERIAL SHALL BE FIXED OVER EACH DRAIN HOLE ON THE OUTSIDE OF THE STRUCTURE WITH MASTIC MATERIAL TO PREVENT SLIPPAGE DURING BACKFILLING.

Title: CATCHBASIN TYPE C	CITY OF NAPERVILLE STANDARD DETAIL
Approved By:	DATE: 6/12/2001 REV: Detail: STORM 5
SCALE: NTS	

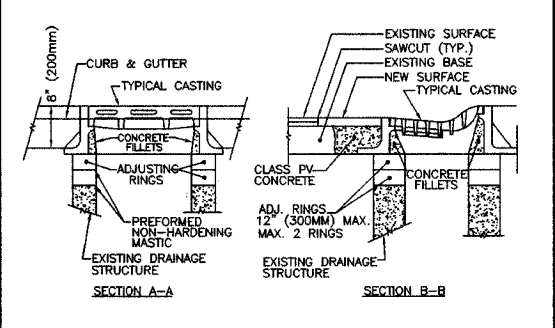


NOTES:
1. ADJUSTMENTS SHALL BE PROTECTED BY A BARRICADE WITH TWO (2) LIGHTS, OR A 1" (25MM) THICK STEEL PLATE SHALL BE PROVIDED AND MAINTAINED BY THE CONTRACTOR AT LOCATIONS WHERE ADJUSTMENTS ARE LOCATED IN TRAVEL LANES UNTIL THE SURFACE RESTORATION IS COMPLETE. THE PLATE SHALL BE PROTECTED FROM SLIDING AND SHALL HAVE BITUMINOUS RAMPS AS REQUIRED.
2. WHEN ADJUSTMENTS RAISE A CASTING ABOVE THE ELEVATION OF THE EXISTING PAVEMENT SURFACE, A BITUMINOUS MIXTURE SHALL BE PLACED ABOVE THE CASTING, TRANSFERRED A DISTANCE OF 1' (300MM) HORIZONTAL FOR EACH INCH OF VERTICAL DISTANCE ABOVE THE EXISTING PAVEMENT. SUCH RAMPS SHALL BE MAINTAINED BY THE CONTRACTOR UNTIL THE COMPLETION OF THE SURFACE RESTORATION.

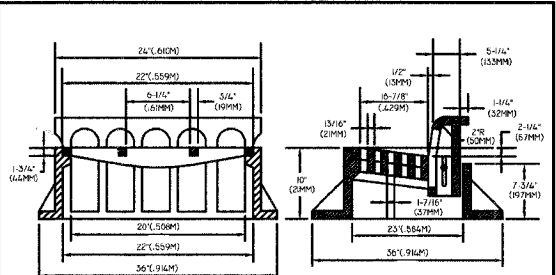
Title: CASTING ADJUSTMENTS FOR STRUCTURES IN PAVED AREAS	CITY OF NAPERVILLE STANDARD DETAIL
Approved By:	DATE: 2/24/98 REV: Detail: STORM 6
SCALE: NTS	



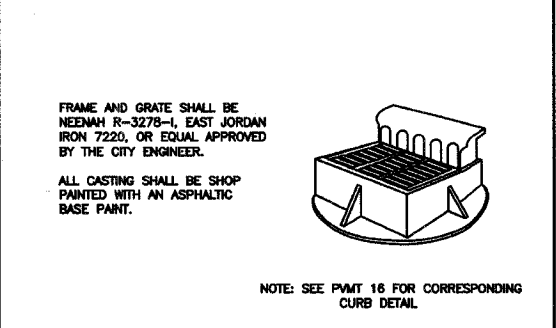
REMOVE & REPLACE CURB A MINIMUM OF 10' (3.05M) EITHER SIDE OF STRUCTURE OR TO NEAREST EXPANSION JOINT (WHICHEVER IS CLOSEST)



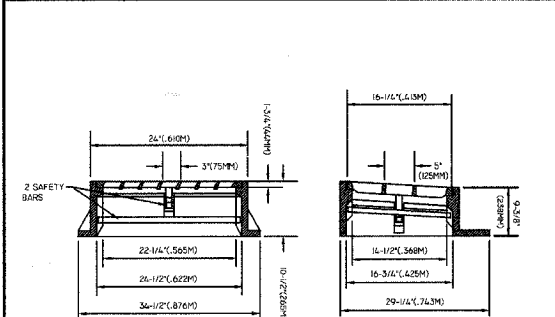
Title: CASTING ADJUSTMENTS FOR STRUCTURES WITHIN THE CURB LINE	CITY OF NAPERVILLE STANDARD DETAIL
Approved By:	DATE: 2/24/98 REV: Detail: STORM 7
SCALE: NTS	



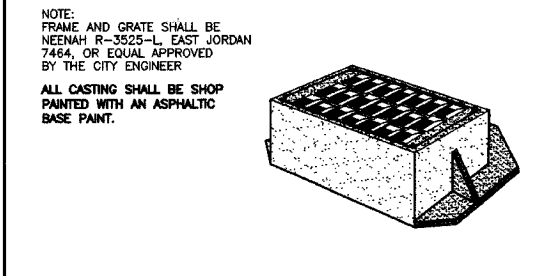
FRAME AND GRATE SHALL BE NEENAH R-3278-L, EAST JORDAN IRON 7220, OR EQUAL APPROVED BY THE CITY ENGINEER.



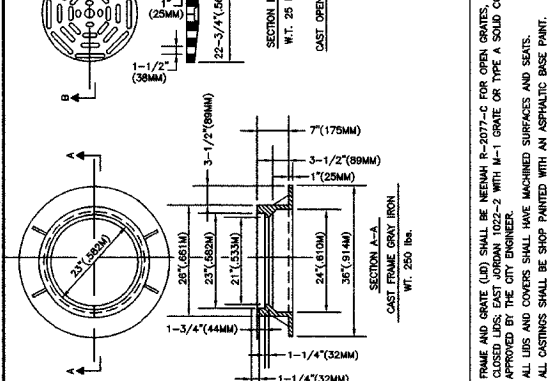
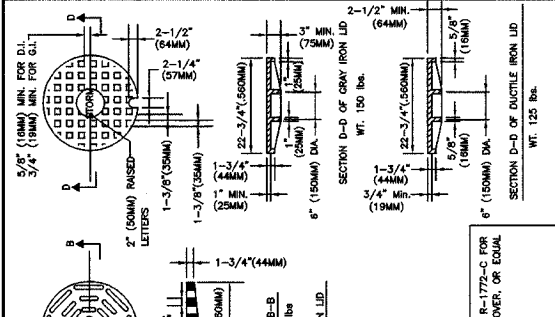
Title: STANDARD FRAME AND GRATE FOR (B6-12) CURB AND GUTTER	CITY OF NAPERVILLE STANDARD DETAIL
Approved By:	DATE: 9/15/99 REV: Detail: STORM 12
SCALE: NTS	



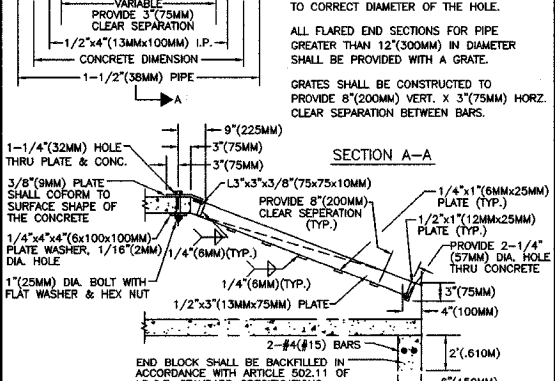
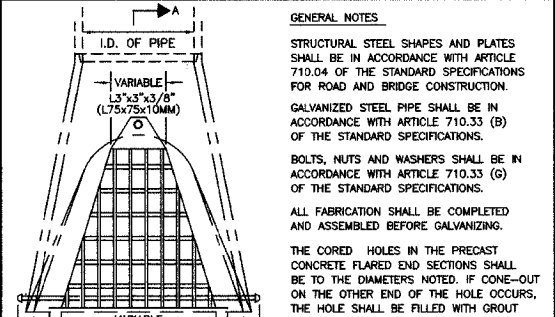
NOTE:
FRAME AND GRATE SHALL BE NEENAH R-3525-L, EAST JORDAN 7464, OR EQUAL APPROVED BY THE CITY ENGINEER.



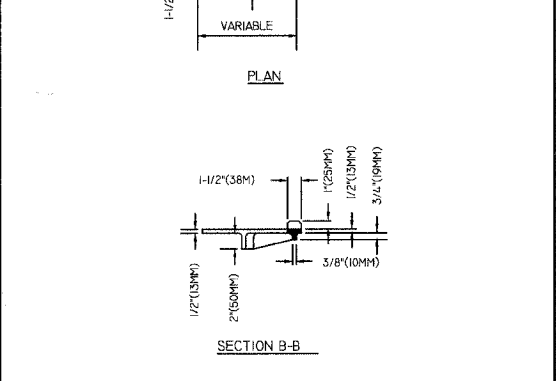
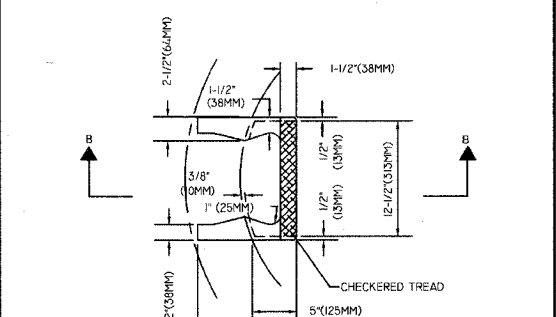
Title: FRAME & GRATE FOR B-6.12 (B-15.30) CURB & GUTTER (DEPRESSED CURB)	CITY OF NAPERVILLE STANDARD DETAIL
Approved By:	DATE: 9/15/99 REV: Detail: STORM 13
SCALE: NTS	



Title: FRAME & LID TYPE 1	CITY OF NAPERVILLE STANDARD DETAIL
Approved By:	DATE: 9/15/99 REV: Detail: STORM 15
SCALE: NTS	



Title: GRATING FOR CONCRETE FLARED END SECTION	CITY OF NAPERVILLE STANDARD DETAIL
Approved By:	DATE: 3/17/98 REV: Detail: STORM 17
SCALE: NTS	



Title: CAST IRON STEPS	CITY OF NAPERVILLE STANDARD DETAIL
Approved By:	DATE: 3/11/98 REV: Detail: STORM 18
SCALE: NTS	

CITY OF NAPERVILLE	
CONSTRUCTION DETAILS	
95TH STREET PARK AND RIDE	
REVISIONS	
NAME	DATE
PRE-FINAL SUBMITTAL	05.31.07
FINAL SUBMITTAL	08.31.07

DATE: 11/26/2007
DESIGNED BY: RTM
TECHNICIAN: JRR
CHECKED BY: JRV