

STATE OF ILLINOIS
DEPARTMENT OF TRANSPORTATION
DIVISION OF HIGHWAYS

FALL	SECTION	COUNTY	TOTAL SHEETS	SHEET NO.
*	06-00132-00-PK	WILL	15	1
STA.		TO STA.		
ILLINOIS		*		

CONTRACT NUMBER 83974

INDEX OF SHEETS

SHEET NO.	DESCRIPTIONS
1	TITLE SHEET
2	GENERAL NOTES
3	SUMMARY OF QUANTITIES
4	EXISTING CONDITIONS AND DEMOLITION PLAN
5	EROSION CONTROL PLAN
6	SITE LAYOUT PLAN
7	SITE GRADING AND UTILITY PLAN
8	SITE LIGHTING PLAN
9-10	LIGHTING DETAILS
11-15	CONSTRUCTION DETAILS
15	TC-10 STANDARD

PLANS FOR PROPOSED FEDERAL AID PROJECT

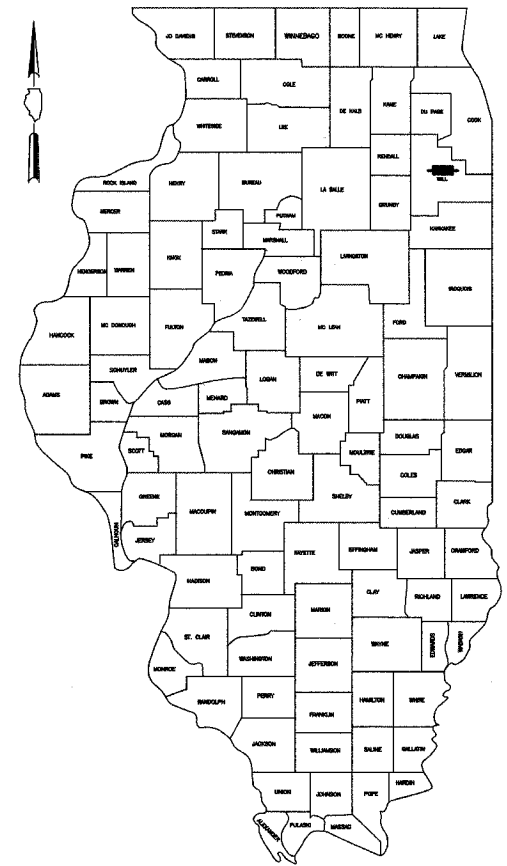
95TH STREET PARK AND RIDE
91ST STREET AND 250TH AVENUE
SECTION 06-00132-00-PK
PARKING LOT IMPROVEMENTS
PROJECT NO: M-8003(689)
CITY OF NAPERVILLE
WILL COUNTY
JOB NO: C-91-014-07

IDOT STANDARDS REFERENCED

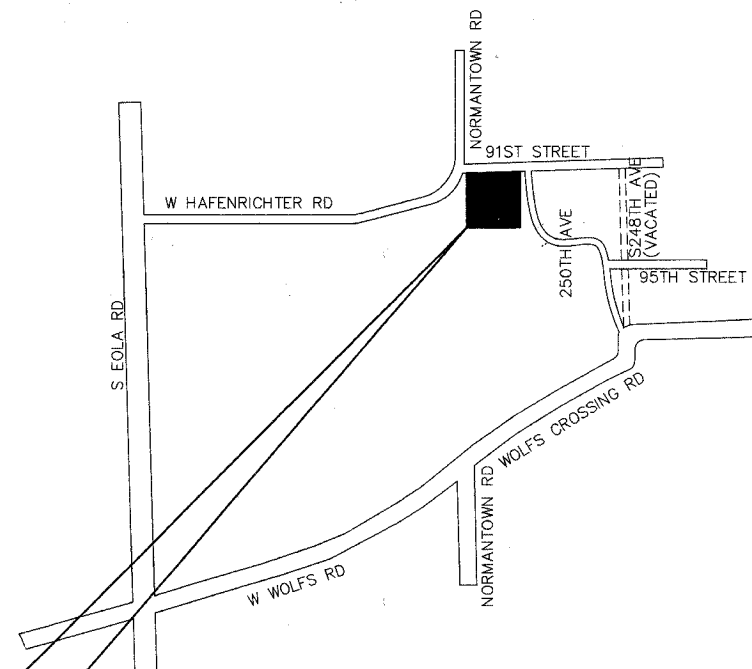
STANDARD NO.	DESCRIPTIONS
000001-05	STANDARDS SYMBOLS, ABBREVIATIONS, & PATTERNS
701901	TRAFFIC CONTROL DEVICES
780001-01	TYPICAL PAVEMENT MARKINGS

CITY OF NAPERVILLE STANDARDS

STANDARD NO.	DESCRIPTIONS
MISC 4	TEMPORARY EROSION CONTROL SYSTEMS
MISC 5	TEMPORARY EROSION CONTROL SYSTEMS
MISC 6	TYPICAL SILT FENCE CONSTRUCTION
MISC 11	ACCESSIBLE PARKING SPACE MARKINGS
MISC 12	CROSSWALK
PVMT 3	SIDEWALK
PVMT 4	CURB RAMPS ACCESSIBLE TO THE DISABLED
PVMT 5	SIDEWALK CONSTRUCTION
PVMT 7	TYPICAL PAVEMENT DETAILS
PVMT 10	TYPICAL COMMERCIAL DRIVEWAY DETAILS
PVMT 11	CURB & GUTTER
PVMT 12	CURB & GUTTER
PVMT 13	STORM SEWER CASTING DETAIL
STORM 1	INLET TYPE A
STORM 2	MANHOLE TYPE A
STORM 3	FLAT SLAB TOP PRECAST REINFORCED CONCRETE
STORM 4	CATCHBASIN TYPE A
STORM 5	CATCHBASIN TYPE C
STORM 6	CASTING ADJUSTMENTS FOR STRUCTURES IN PAVED AREAS
STORM 7	CASTING ADJUSTMENTS FOR STRUCTURES WITHIN THE CURB LINE
STORM 12	STANDARD FRAME AND GRATE FOR (B6-12) CURB AND GUTTER
STORM 13	FRAME & GRATE FOR B-6.12 (B-15.30) CURB & GUTTER (DEPRESSED CURB)
STORM 15	FRAME & LID TYPE 1
STORM 17	GRATING FOR CONCRETE FLARED END SECTION
STORM 18	CAST IRON STEPS



LOCATION OF SECTION INDICATED THUS: - - ■ - -



LOCATION MAP
(NOT TO SCALE)
TOWNSHIP 37 NORTH, RANGE 9 EAST

HORIZ: 1"=40' 40 0 40

FULL SIZE PLANS HAVE BEEN PREPARED USING STANDARD ENGINEERING SCALES. REDUCED SIZED PLANS WILL NOT CONFORM TO STANDARD SCALES. IN MAKING MEASUREMENTS ON REDUCED PLANS, THE ABOVE SCALES MAY BE USED.

CONTRACT NO. 83974



STATE OF ILLINOIS DEPARTMENT OF TRANSPORTATION DIVISION OF HIGHWAYS	
APPROVED	<i>November 21 2007</i> <i>Christine Hilt</i> CITY OF NAPERVILLE/ CITY ENGINEER
PASSED	<i>DECEMBER 17 2007</i> <i>Christine Hilt</i> DISTRICT ONE ENGINEER OF LOCAL ROADS & STREETS
RELEASING FOR BID BASED ON LIMITED REVIEW	<i>December 17 2007</i> <i>Diane O'Keefe</i> DEPUTY DIRECTOR OF HIGHWAYS, REGION ONE ENGINEER

FOR UNDERGROUND
UTILITY LOCATIONS



(800) 892-0123

CITY OF NAPERVILLE
ENGINEERING DEPARTMENT
(630) 420-6113



CORPORATE SEAL
PLANS PREPARED BY:



450 E Devon Ave, Suite 300 - Itasca, Illinois 60143
Tel: 630.773.3900 - Fax: 630.773.3975
www.civiltechinc.com

P.E. SIGNATURE: *Reid T. Magner*
P.E. NAME: REID T. MAGNER
DATE: 11/26/2007
IL LICENSE NO.: 062-056273
LICENSE EXPIRATION: 11/30/2009

CONSULTANT ENGINEER: REID T. MAGNER, P.E. CIVIL TECH ENGINEERING, INC.
FIELD ENGINEER: MARILYN D. SOLOMON, P.E. (847) 705-4407

FILE NO.	SECTION	COUNTY	TOTAL SHEETS	SHEET NO.
*	06-00132-00-PK	WILL	15	2
STA.	TO STA.			
	KLMSD			

CONTRACT NUMBER 83974

A. GENERAL

- ALL CONSTRUCTION SHALL BE DONE IN ACCORDANCE WITH THE DETAILS IN THE PLANS, THE SPECIAL PROVISIONS INCLUDED IN THE CONTRACT DOCUMENTS, AND THE LATEST EDITION OF THE FOLLOWING STATE OF ILLINOIS SPECIFICATIONS: "THE STANDARD SPECIFICATIONS FOR ROAD AND BRIDGE CONSTRUCTION" (REFERRED TO AS THE "STANDARD SPECIFICATIONS"), THE "SUPPLEMENTAL SPECIFICATIONS AND RECURRING SPECIAL PROVISIONS", THE "STANDARD SPECIFICATIONS FOR TRAFFIC CONTROL ITEMS", THE "MANUAL ON UNIFORM TRAFFIC CONTROL DEVICES FOR STREETS AND HIGHWAYS", THE "MANUAL OF TEST PROCEDURES FOR MATERIALS" AND THE "STANDARD SPECIFICATIONS FOR WATER AND SEWER MAIN CONSTRUCTION IN ILLINOIS".
 - ANY REFERENCE TO "STANDARDS" THROUGHOUT THE PLANS OR SPECIAL PROVISIONS SHALL BE INTERPRETED AS THE LATEST I.D.O.T. STANDARD.
 - THE PAVEMENT ELEVATIONS SHOWN ON THE PLANS ARE FINISHED GRADES OF PROPOSED SURFACE COURSE OR P.C.C. PAVEMENT, UNLESS OTHERWISE INDICATED.
 - THE CONTRACTOR SHALL NOTIFY THE ENGINEER, ILLINOIS DEPARTMENT OF TRANSPORTATION (847) 705-4487, AND THE CITY OF NAPERVILLE (630) 420-6113) 72 HOURS PRIOR TO THE COMMENCEMENT OF WORK.
 - WHERE SECTION OR SUBSECTION MONUMENTS ARE ENCOUNTERED, THE ENGINEER SHALL BE NOTIFIED BEFORE SUCH MONUMENTS ARE REMOVED. THE CONTRACTOR SHALL CAREFULLY PRESERVE ALL PROPERTY MARKERS AND MONUMENTS UNTIL THE OWNER, AND AUTHORIZED SURVEYOR OR AGENT HAS WITNESSED OR OTHERWISE REFERENCED THEIR LOCATION.
 - THE CONTRACTOR'S ATTENTION IS CALLED TO THE FACT THAT SOME QUANTITIES ARE GIVEN IN BOTH SUMMARY FORM AND ON THE PLAN SHEETS. CARE SHOULD BE TAKEN TO AVOID DUPLICATION OF QUANTITIES.
 - ALL UNBALLASTED TYPE I AND TYPE II BARRICADES SHALL HAVE TWO SANDBAGS ON THE BOTTOM RAIL.
 - CONSTRUCTION ACTIVITIES MAY OCCUR BETWEEN 7:00AM AND 7:00PM MONDAY THROUGH FRIDAY AND 8:30AM TO 5:00PM ON SATURDAYS. CONSTRUCTION ACTIVITIES ON SUNDAY ARE PROHIBITED. NO WORK WILL BE PERFORMED ON STATE OF ILLINOIS OBSERVED HOLIDAYS. CONSTRUCTION ACTIVITIES ARE IDENTIFIED AS THE OPERATION OF HEAVY EQUIPMENT, INCLUDING BUT NOT LIMITED TO THE WARMING UP OF ANY PIECE OF EQUIPMENT OR TURNING ON ENGINES. CONSTRUCTION ACTIVITIES SHALL NOT BEGIN BEFORE 7:00AM. CONSTRUCTION ACTIVITIES WHICH REQUIRE ONE-WAY CONDITIONS IMPACTING TRAFFIC MAY OCCUR ONLY BETWEEN 9:00AM AND 3:00PM.
 - SHOULD THE CONTRACTOR DESIRE TO OBTAIN WATER FOR CONSTRUCTION PURPOSES FROM THE LOCAL AREA, THE CONTRACTOR WILL BE RESPONSIBLE FOR MAKING ARRANGEMENTS THROUGH THE NAPERVILLE PUBLIC WORKS DEPARTMENT. NAPERVILLE PUBLIC WORKS WILL INSTRUCT THE CONTRACTOR WHERE A POTABLE WATER SUPPLY FROM A HYDRANT NEAR THE WORK SITE IS LOCATED. THE CITY SHALL METER THE POTABLE WATER USED BY THE CONTRACTOR AND THE CONTRACTOR WILL BE CHARGED FOR THE WATER USED AT THE CITY RATES. THE CONTRACTOR IS RESPONSIBLE FOR THE TRANSPORTATION OF THE WATER TO THE SITE WHERE NEEDED. THE COST OF TRANSPORTING THE WATER SHALL BE CONSIDERED INCIDENTAL TO THE CONTRACT. ALL ASPECTS OF THE USE OF THE WATER BY THE CONTRACTOR ARE CONSIDERED INCIDENTAL TO THE CONTRACT.
 - INSPECTION AND LAYOUT - THE CONTRACTOR SHALL BE RESPONSIBLE FOR HAVING THE FINISHED WORK CONFORM TO THE LINES, GRADES, ELEVATIONS, AND DIMENSIONS CALLED FOR IN THE PLANS. THE CONTRACTOR SHALL BE HELD RESPONSIBLE FOR THE QUALITY AND COMPLETENESS OF HIS WORK. THE ENGINEER IS THE CITY'S REPRESENTATIVE TO VERIFY QUALITY AND COMPLETENESS. ANY CONSTRUCTION LAYOUT NECESSARY SHALL BE COORDINATED THROUGH THE RESIDENT ENGINEER. THE CONTRACTOR SHALL EXERCISE CARE IN THE PRESERVATION OF STAKES AND BENCH MARKS AND SHALL HAVE THEM RESET AT HIS/HER EXPENSE WHEN ANY ARE DAMAGED, LOST, DISPLACED, OR REMOVED OR OTHERWISE OBLITERATED.
 - TEMPORARY TOILET - THE CONTRACTOR SHALL PROVIDE A TEMPORARY TOILET FACILITY FOR THE USE OF ALL CONTRACTORS' PERSONNEL EMPLOYED ON THE WORK, AND SHALL MAINTAIN SAME IN PROPER SANITARY CONDITION. AT COMPLETION, THE FACILITY SHALL BE REMOVED AND THE PREMISES LEFT CLEAN. THE ENGINEER SHALL APPROVE THE LOCATION OF THE TEMPORARY TOILET. THE COST OF THIS FACILITY IS CONSIDERED INCIDENTAL TO THE CONTRACT.
 - DISPOSAL OF WASTE EXCAVATED MATERIAL - THE CONTRACTOR SHALL REMOVE FROM THE PROJECT SITE ALL UNSUITABLE EXCAVATED MATERIAL. THIS MATERIAL WILL BE CLASSIFIED AS ALL MATERIAL THAT THE ENGINEER DEEMS UNSUITABLE, SUCH AS REBAR, ABANDONED WIRE, ETC. THE WASTE EXCAVATED MATERIAL SHALL NOT BE DEPOSITED ON PUBLIC OR PRIVATE PROPERTY UNLESS THE CONTRACTOR FIRST OBTAINS THE WRITTEN PERMISSION FROM THE PROPERTY OWNER OR THE AUTHORIZED REPRESENTATIVE OF THE APPROPRIATE PUBLIC AGENCY. THE REMOVAL OF UNSUITABLE MATERIAL FROM THE SITE WILL BE INCIDENTAL TO THIS CONTRACT AND NO COMPENSATION WILL BE PAID.
- B. UTILITIES**
- THE LOCATION OF PUBLIC OR PRIVATE UTILITIES SHOWN ON THE PLANS ARE APPROXIMATE AND THEIR ACCURACY IS NOT GUARANTEED. THE CONTRACTOR WILL BE REQUIRED TO ASCERTAIN THE EXACT LOCATION OF SUCH UTILITIES SO AS NOT TO DAMAGE THEM IN ACCORDANCE WITH THE SPECIAL PROVISIONS AND ARTICLE 107.31 OF THE STANDARD SPECIFICATIONS. THE CONTRACTOR SHALL BE RESPONSIBLE FOR CONTACTING THE UTILITY OWNERS SO THAT THEIR FACILITIES MAY BE ADJUSTED OR RELOCATED, IF NECESSARY, PRIOR TO CONSTRUCTION OPERATIONS.
 - THE CONTRACTOR SHALL BE RESPONSIBLE FOR ANY DAMAGE OR DESTRUCTION OF PUBLIC OR PRIVATE PROPERTY IN ACCORDANCE WITH THE SPECIAL PROVISIONS AND ARTICLE 107.20 OF THE "STANDARD SPECIFICATIONS", AND SHALL RESTORE SUCH PROPERTY AT HIS OWN EXPENSE. COORDINATION OF ALL UTILITY WORK INVOLVED IN THE CONSTRUCTION AREA WILL BE DISCUSSED AT A PRE-CONSTRUCTION CONFERENCE. THE CONTRACTOR SHALL USE ALL NECESSARY PRECAUTIONS AND PROTECTIVE MEASURES REQUIRED TO MAINTAIN EXISTING UTILITIES, SEWERS, AND APPURTENANCES THAT MUST BE KEPT IN OPERATION. IN PARTICULAR, THE CONTRACTOR WILL TAKE ADEQUATE MEASURES TO PREVENT THE UNDERMINING OF UTILITIES AND SEWERS WHICH ARE STILL IN SERVICE.
 - BEFORE STARTING ANY EXCAVATION, THE CONTRACTOR SHALL CALL "JULIE" AT 1-800-892-0123 FOR FIELD LOCATIONS OF BURIED ELECTRIC, TELEPHONE, GAS AND CABLE TELEVISION FACILITIES IN ACCORDANCE WITH STATE LAW.
 - BEFORE STARTING ANY EXCAVATION, THE CONTRACTOR SHALL CONTACT THE CITY OF NAPERVILLE PUBLIC UTILITIES AT (630) 420-6131.

C. DRAINAGE

- WHENEVER DURING CONSTRUCTION OPERATIONS ANY LOOSE MATERIAL IS DEPOSITED IN THE FLOW LINE OF DRAINAGE STRUCTURES SUCH THAT THE NATURAL FLOW OF WATER IS OBSTRUCTED, IT SHALL BE REMOVED AT THE CLOSE OF EACH WORKING DAY. AT THE CONCLUSION OF CONSTRUCTION OPERATIONS, ALL UTILITY STRUCTURES SHALL BE CLEANED AND FREE FROM DIRT AND DEBRIS. THE WORK SPECIFIED ABOVE WILL NOT BE PAID FOR SEPARATELY BUT SHALL BE INCIDENTAL TO THE CONTRACT.
- "NON-SHEAR" COUPLINGS SHALL BE USED FOR CONNECTIONS OF NEW PIPE TO EXISTING PIPE, AND WHERE DISSIMILAR PIPE AND JOINT MATERIALS ARE ENCOUNTERED. COUPLINGS SHALL BE A MINIMUM OF 8 INCHES LONG FOR CONNECTIONS OF 4-INCH THROUGH 8-INCH PIPE AND A MINIMUM OF 12 INCHES LONG FOR CONNECTIONS ON LARGER PIPES (THESE ARE SPECIAL ORDER ITEMS). NO STAINLESS STEEL SHEAR RINGS WILL BE ALLOWED. THIS WORK WILL NOT BE PAID FOR SEPARATELY, BUT SHALL BE INCIDENTAL TO THE CONTRACT.
- THE CONTRACTOR SHALL CONFIRM ALL EXISTING STORM SEWER PIPE SIZES AND INVERTS PRIOR TO ORDERING STRUCTURES. ANY MODIFICATION OF STRUCTURES DUE TO THE FAILURE OF THE CONTRACTOR TO PERFORM THIS TASK SHALL BE AT THE CONTRACTOR'S EXPENSE AND MAY LEAD TO THE REJECTION OF THE STRUCTURE IN THE FIELD.
- ALL FRAMES WITH CLOSED LIDS TO BE FURNISHED AS PART OF THIS CONTRACT FOR CONSTRUCTION, ADJUSTMENT OR RECONSTRUCTION OF ANY VALVE VAULT, MANHOLE, OR CATCH BASIN SHALL HAVE THE WORD "WATER", "SANITARY", OR "STORM", AS APPROPRIATE, CAST INTO THE LID.
- ALL EXISTING DRAINAGE FACILITIES, HEADWALLS, FENCES AND OTHER OBSTRUCTIONS WHICH INTERFERE WITH THE PROPOSED IMPROVEMENT (IN THE OPINION OF THE ENGINEER), AND WHICH ARE NOT SHOWN ON THE PLANS SHALL BE REMOVED. THE COST OF REMOVAL OF EXISTING PIPE CULVERTS, STORM SEWERS, DRAINAGE STRUCTURES, CONCRETE HEADWALLS, FENCING OR OTHER OBSTRUCTIONS WHICH INTERFERE WITH THE PROPOSED IMPROVEMENTS AND WHICH ARE NOT SHOWN TO BE REMOVED AS A SEPARATE PAY ITEM SHALL BE CONSIDERED INCIDENTAL TO THE CONTRACT.
- MATERIALS CONSIDERED SUITABLE BY THE ENGINEER FOR SALVAGE SHALL BE STORED WITHIN THE RIGHT-OF-WAY FOR LATER REMOVAL BY THE CITY OF NAPERVILLE.
- THE STATION/OFFSET/ELEVATIONS NOTED FOR ALL DRAINAGE STRUCTURES LOCATED IN THE CURB LINE REFER TO THE POSITION OF THE ADJACENT PROPOSED EDGE OF PAVEMENT. THE CONTRACTOR SHALL BE RESPONSIBLE FOR DETERMINING THE OFFSET NECESSARY FOR EACH STRUCTURE TO SET THE FRAME AND GRATE IN ITS PROPER LOCATION. OFFSETS SHOWN FOR ALL OTHER STRUCTURES ARE TO THE CENTER OF STRUCTURE. DRAINAGE STRUCTURES FLAT-TOPS AND CONES SHALL BE TURNED SO THAT THE FRAMES ARE CLOSEST TO THE CENTERLINE OF THE ROAD. ALL FLAT-TOPS AND CONES ARE ASSUMED TO BE ECCENTRIC.
- FRAME ELEVATIONS GIVEN ON THE PLANS ARE ONLY TO ASSIST THE CONTRACTOR IN DETERMINING THE APPROXIMATE OVERALL HEIGHT OF THE STRUCTURE. WHEN LOCATED WITHIN THE CURB LINE, FRAME ELEVATION GIVEN REFLECT THE EDGE OF PAVEMENT ELEVATIONS. ALL OTHER FRAME ELEVATIONS ARE GIVEN AT THE CENTER. FRAMES ON ALL NEW STRUCTURES WILL BE ADJUSTED TO THE FINAL ELEVATION OF THE AREA IN WHICH THEY ARE LOCATED AS PART OF THE STRUCTURE COST.
- HOT-MIX ASPHALT (HMA) OR P.C. CONCRETE PAVEMENT REMOVED DUE TO STORM SEWER OR CULVERT CROSSINGS SHALL NOT BE LEFT IN GRAVEL OVERNIGHT. THIS INCLUDES THE MAIN ROADS, PRIVATE ENTRANCES, COMMERCIAL ENTRANCES, SIDEWALKS, AND PARKING AREAS. TEMPORARY HMA PATCHING (AT THE CONTRACTOR'S EXPENSE) MAY BE USED IN LIEU OF IMMEDIATE PAVEMENT REPLACEMENT.
- ANY DEWATERING OF SEWER AND WATER MAIN TRENCHES AS WELL AS TEMPORARY SHEETING OR BRACING THAT MAY BE REQUIRED SHALL BE THE RESPONSIBILITY OF THE CONTRACTOR AND SHALL BE CONSIDERED INCIDENTAL TO THE CONTRACT. IN THE EVENT THAT SOFT MATERIALS ARE ENCOUNTERED IN SEWER CONSTRUCTION, THE CONTRACTOR SHALL, UPON THE APPROVAL OF THE ENGINEER, OVER EXCAVATE TO A DEPTH OF 12 INCHES BELOW THE BOTTOM OF THE PIPE AND BACKFILL WITH COMPACTED CRUSHED STONE, PROPERLY FORMED TO FIT THE BOTTOM OF THE PIPE.
- ALL EXISTING FIRE HYDRANTS, FRAMES, GRATES, AND LIDS THAT ARE BEING REPLACED REMAIN THE PROPERTY OF THE CITY OF NAPERVILLE. THE CONTRACTOR SHALL DELIVER ALL REPLACED FIRE HYDRANTS, FRAMES, GRATES AND LIDS TO THE RESPECTIVE PUBLIC WORKS FACILITY. SUCH DELIVERY IS INCIDENTAL TO THE CONTRACT.
- THE ENDS OF EXISTING DRAINAGE LINES WHICH ARE NOT TO BE INCORPORATED IN TO THE PROPOSED IMPROVEMENT (AS DETERMINED BY THE ENGINEER) SHALL BE SEALED WITH BRICKS AND PORTLAND CEMENT MORTAR TO THE SATISFACTION OF THE ENGINEER. THE COST OF THIS WORK SHALL BE CONSIDERED INCIDENTAL TO THE CONTRACT.
- ADJUSTMENT RINGS, MAXIMUM OF 12" IN HEIGHT, WILL BE ALLOWED IN THE ADJUSTMENT OF CATCH BASIN, MANHOLE, INLET AND VALVE VAULT STRUCTURES. COMMON BRICK WILL NOT BE ALLOWED. THE RINGS SHALL BE INCIDENTAL TO THE CONTRACT.

D. MISCELLANEOUS

- IT SHALL BE THE CONTRACTOR'S RESPONSIBILITY TO VERIFY ALL DIMENSIONS AND CONDITIONS EXISTING IN THE FIELD PRIOR TO ORDERING MATERIALS AND BEGINNING CONSTRUCTION.
 - THE CONTRACTOR SHALL SAW CUT PAVEMENT, CURB & GUTTER, SIDEWALK, AND DRIVEWAY PAVEMENT AS INDICATED ON THE PLANS TO SEPARATE THE EXISTING MATERIAL TO BE REMOVED BY MEANS OF AN APPROVED CONCRETE SAW TO A DEPTH AS SHOWN ON THE PLANS OR AS OTHERWISE DIRECTED BY THE ENGINEER. ALL SAWCUTTING SHALL BE INCIDENTAL TO REMOVAL ITEMS AND SHALL BE PERFORMED PRIOR TO BEGINNING REMOVAL UNLESS OTHERWISE NOTED.
 - THE CONTRACTOR WILL BE REQUIRED TO DISPOSE OF ALL SIDEWALK, CURB AND GUTTER, PAVEMENT, AND ALL OTHER MATERIAL EXCAVATED OR REMOVED DUE TO CONSTRUCTION OPERATIONS, AT HIS EXPENSE. ALL EXCESS EXCAVATED MATERIAL SHALL BE REMOVED FROM SITE ON THE DAY IT IS EXCAVATED. NO PAYMENT WILL BE MADE FOR HAULING OR TRUCKING MATERIAL TO A LOCATION, PROVIDED BY THE CONTRACTOR, OUTSIDE THE LIMITS OF THE IMPROVEMENT, UNLESS OTHERWISE DIRECTED BY THE ENGINEER.
 - WHEN DIRECTED BY THE ENGINEER, SUPPLEMENTAL WATERING SHALL BE APPLIED TO ALL SODDED AREAS PRIOR TO FINAL ACCEPTANCE AT A RATE SPECIFIED BY THE ENGINEER AND IN ACCORDANCE WITH THE "STANDARD SPECIFICATIONS" AND SPECIAL PROVISIONS.
 - ALL SUITABLE EXCESS MATERIAL FROM SEWER TRENCHES, SIDE ROADS, ENTRANCES OR OTHER NECESSARY EXCAVATIONS SHALL BE USED IN THE CONSTRUCTION OF THE IMPROVEMENT. PLACEMENT AND COMPACTION OF THIS MATERIAL SHALL BE CONSIDERED AS INCIDENTAL TO "EARTH EXCAVATION", AND NO ADDITIONAL COMPENSATION WILL BE ALLOWED.
 - ALL EXCAVATION AND EMBANKMENT SHALL BE CONSTRUCTED FOUR (4) INCHES OR TWELVE (12) INCHES BELOW FINISHED GRADE LINE TO ALLOW FOR TOP SOIL PLACEMENT AS DESIGNATED IN THE PLANS FOR THIS CONTRACT.
 - ALL EXISTING GRASS AREAS DISTURBED BY THE CONSTRUCTION OPERATIONS SHALL BE SODDED OR SEEDED AS DIRECTED BY THE ENGINEER.
- E. SIGNS**
- ALL SIGNS RELOCATED OR REPLACED SHALL BE ERECTED USING NEW "TELESPAR", "SQUARE-FIT" OR APPROVED EQUAL SYSTEM METAL BASES CUT 42" LONG FROM 2 1/4 INCH SQUARE MATERIAL. THEY ARE TO BE DRIVEN INTO SOLID GROUND USING A PNEUMATIC DRIVER. THIS WORK WILL NOT BE PAID FOR SEPARATELY BUT SHALL BE INCIDENTAL TO THE CONTRACT.

F. POINTS OF CONTACT:

CITY OF NAPERVILLE
 MS. JENNIFER LOUDEN
 PROJECT ENGINEER
 400 SOUTH EAGLE STREET
 NAPERVILLE, IL 60566-7020
 PH: (630)420-4197
 FAX: (630)305-5986

CITY OF NAPERVILLE
 MR. ROBERT J. KOZUREK, P.E.
 ENGINEERING MANAGER
 400 SOUTH EAGLE STREET
 NAPERVILLE, IL 60566-7020
 PH: (630) 420-6113
 FAX: (630) 305-5986

CITY OF NAPERVILLE
 PUBLIC UTILITIES
 MR. ALLAN L. POOLE, P.E., DEE
 DIRECTOR OF PUBLIC UTILITIES
 400 SOUTH EAGLE STREET
 P.O. BOX 3020
 NAPERVILLE, IL 60566-7020
 PH: (630) 420-6131
 FAX: (630) 420-6744

SBC
 MR. JON DOLES
 4918 W. 95TH STREET
 OAK LAWN, IL 60453
 PH: (847) 759-5507

COMMONWEALTH EDISON
 MR. TOM STUTZMAN
 125 SOUTH CLARK STREET, ROOM 1737
 CHICAGO, IL 60690
 PH: (630) 437-2236

NICOR GAS
 MR. HANS BELL
 1844 FERRY ROAD
 NAPERVILLE, IL 60563-9600
 PH: (630) 983-8676

HOT-MIX ASPHALT MIXTURE REQUIREMENTS

MIXTURE TYPE	AC TYPE	AIR VOIDS
HOT-MIX ASPHALT SURFACE COURSE, MIX "C", N50 (IL-9.5mm), 1 3/4"	PG 64-22	4%±0.50 Gyr.
HOT-MIX ASPHALT BINDER COURSE, IL-19.0, N50, 2 1/4" & 3 1/4"	PG 64-22*	4%±0.50 Gyr.

THE UNIT WEIGHT USED TO CALCULATE ALL HMA SURFACE MIXTURE QUANTITIES IS 112 LBS/SQ YD/IN.
 * WHEN RAP EXCEEDS 20%, THE NEW ASPHALT BINDER IN THE MIX SHALL BE 58-22.

CITY OF NAPERVILLE

GENERAL NOTES

95TH STREET PARK AND RIDE

DATE: 11/26/2007
 DESIGNED BY: RTM
 TECHNICIAN: JRR
 CHECKED BY: JRV

REVISIONS	
NAME	DATE
PRE-FINAL SUBMITTAL	05.31.07
FINAL SUBMITTAL	08.31.07

SUMMARY OF QUANTITIES

FALL	SECTION	COUNTY	TOTAL SHEETS	SHEET NO.
*	06-00132-00-PK	WILL	15	3
STA.	TO STA.			
	ELONGS			

CONTRACT NUMBER 83974

ITEM NO.	CODE NO.	PAY ITEM	FUNDING BREAKDOWN		CONSTRUCTION	TYPE CODE
			LOCATION OF WORK			
			UNIT	TOTAL		
1	20101700	SUPPLEMENTAL WATERING	UNIT	2	2	
2	20200100	EARTH EXCAVATION	CU YD	8,843	8,843	
3	20201200	REMOVAL AND DISPOSAL OF UNSUITABLE MATERIAL	CU YD	50	50	
4	20700420	POROUS GRANULAR EMBANKMENT, SUBGRADE	CU YD	100	100	
5	20800150	TRENCH BACKFILL	CU YD	100	100	
6	21001000	GEOTECHNICAL FABRIC FOR GROUND STABILIZATION	SQ YD	11,000	11,000	
7	21101615	TOPSOIL FURNISH AND PLACE, 4"	SQ YD	14,500	14,500	
8	21101645	TOPSOIL FURNISH AND PLACE, 12"	SQ YD	700	700	
9	21300010	EXPLORATION TRENCH, SPECIAL	FOOT	20	20	
10	25000110	SEEDING, CLASS 1A	ACRE	2	2	
11	25000312	SEEDING, CLASS 4A	ACRE	1	1	
12	25000400	NITROGEN FERTILIZER NUTRIENT	LB	270	270	
13	25000500	PHOSPHORUS FERTILIZER NUTRIENT	LB	270	270	
14	25000600	POTASSIUM FERTILIZER NUTRIENT	LB	270	270	
15	25100125	MULCH, METHOD 3	ACRE	3	3	
16	25100630	EROSION CONTROL BLANKET	SQ YD	5,000	5,000	
17	25100635	HEAVY DUTY EROSION CONTROL BLANKET	SQ YD	700	700	
18	25200100	SODDING	SQ YD	1,300	1,300	
19	28000250	TEMPORARY EROSION CONTROL SEEDING	LB	300	300	
20	28000400	PERIMETER EROSION BARRIER	FOOT	1,200	1,200	
21	28000500	INLET AND PIPE PROTECTION	EACH	8	8	
22	28000510	INLET FILTER	EACH	12	12	
23	28100105	STONE RIPRAP, CLASS A3	SQ YD	50	50	
24	28200200	FILTER FABRIC	SQ YD	50	50	
25	35102000	AGGREGATE BASE COURSE, TYPE B 8"	SQ YD	7,250	7,250	
26	35102200	AGGREGATE BASE COURSE, TYPE A 10"	SQ YD	4,741	4,741	
27	40600100	BITUMINOUS MATERIALS (PRIME COAT)	GALLON	6,550	6,550	
28	40603080	HOT-MIX ASPHALT BINDER COURSE, IL-19.0, N50	TON	1,625	1,625	
29	40603310	HOT-MIX ASPHALT SURFACE COURSE, MIX "C", N50	TON	1,055	1,055	
30	42001300	PROTECTIVE COAT	SQ YD	1,150	1,150	
31	42400200	PORTLAND CEMENT CONCRETE SIDEWALK 5 INCH	SQ FT	1,500	1,500	
32	42400800	DETECTABLE WARNINGS	SQ FT	450	450	
33	44000100	PAVEMENT REMOVAL	SQ YD	357	357	
34	44000500	COMBINATION CURB AND GUTTER REMOVAL	FOOT	346	346	
35	44000600	SIDEWALK REMOVAL	SQ FT	635	635	
36	54213657	PRECAST REINFORCED CONCRETE FLARED END SECTIONS 12"	EACH	3	3	
37	550A0050	STORM SEWERS, CLASS A, TYPE 1 12"	FOOT	872	872	
38	60206905	CATCH BASINS, TYPE C, TYPE 1 FRAME, OPEN LID	EACH	2	2	
39	60207905	CATCH BASINS, TYPE C, TYPE 11 FRAME AND GRATE	EACH	1	1	
40	60213800	RESTRICTED DEPTH CATCH BASINS, 4'-DIAMETER, TYPE 1 FRAME, OPEN LID	EACH	2	2	
41	60214000	RESTRICTED DEPTH CATCH BASINS, 4'-DIAMETER, TYPE 3 FRAME AND GRATE	EACH	1	1	
42	60214700	RESTRICTED DEPTH CATCH BASINS, 4'-DIAMETER, TYPE 11 FRAME AND GRATE	EACH	3	3	
43	60260100	INLETS TO BE ADJUSTED	EACH	1	1	
44	60260300	INLETS TO BE ADJUSTED WITH NEW TYPE 1 FRAME, OPEN LID	EACH	1	1	
45	60500060	REMOVING INLETS	EACH	1	1	
46	60603800	COMBINATION CONCRETE CURB AND GUTTER, TYPE B-6.12	FOOT	3,290	3,290	
47	60604400	COMBINATION CONCRETE CURB AND GUTTER, TYPE B-6.18	FOOT	230	230	
48	67000400	ENGINEER'S FIELD OFFICE, TYPE A	CAL M	4	4	
49	67100100	MOBILIZATION	L SUM	1	1	
50	70101700	TRAFFIC CONTROL AND PROTECTION	L SUM	1	1	

ITEM NO.	CODE NO.	PAY ITEM	FUNDING BREAKDOWN		CONSTRUCTION	TYPE CODE
			LOCATION OF WORK			
			UNIT	TOTAL		
51	72000100	SIGN PANEL -- TYPE 1	SQ FT	105	105	
52	72400500	RELOCATE SIGN PANEL ASSEMBLY -- TYPE A	EACH	1	1	
53	72800100	TELESCOPING STEEL SIGN SUPPORT	FOOT	200	200	
54	73100110	BASE FOR TELESCOPING STEEL SIGN SUPPORT, SPECIAL	EACH	7	7	
55	78000100	^ THERMOPLASTIC PAVEMENT MARKING LTRS. & SYMBOLS	SQ. FT	100	100	
56	78000200	^ THERMOPLASTIC PAVEMENT MARKING -- LINE 4"	FOOT	5,900	5,900	
57	78000400	^ THERMOPLASTIC PAVEMENT MARKING -- LINE 6"	FOOT	570	570	
58	78000600	^ THERMOPLASTIC PAVEMENT MARKING -- LINE 12"	FOOT	32	32	
59	78000650	^ THERMOPLASTIC PAVEMENT MARKING -- LINE 24"	FOOT	200	200	
60	78300100	^ PAVEMENT MARKING REMOVAL	SQ FT	1,000	1,000	
61	80400100	^ ELECTRIC SERVICE INSTALLATION	EACH	1	1	
62	80400200	^ ELECTRIC UTILITY SERVICE CONNECTION	L SUM	1	1	
63	81000600	^ CONDUIT IN TRENCH, 2" DIA., GALVANIZED STEEL	FOOT	40	40	
64	81001000	^ CONDUIT IN TRENCH, 4" DIA., GALVANIZED STEEL	FOOT	140	140	
65	81400100	^ HANDHOLE	EACH	2	2	
66	81702400	^ ELECTRIC CABLE IN CONDUIT, 600V (XLP--TYPE USE) 3-1/C NO. 2	FOOT	20	20	
67	81900200	^ TRENCH AND BACKFILL FOR ELECTRICAL WORK	FOOT	1,980	1,980	
68	82102250	^ LUMINAIRE, SODIUM VAPOR, HORIZONTAL MOUNT, 250 WATT	EACH	23	23	
69	82500505	^ LIGHTING CONTROLLER, SPECIAL	EACH	1	1	
70	83600400	^ POLE FOUNDATION, METAL	EACH	16	16	
71	84400105	^ RELOCATE EXISTING LIGHTING UNIT	EACH	1	1	
72	X0322671	STABILIZED CONSTRUCTION ENTRANCE	SQ YD	225	225	
73	X6020175	DRAINAGE STRUCTURE WITH RESTRICTOR	EACH	1	1	
74	XX001368	PULL EXISTING CABLE FROM UNIT DUCT	FOOT	1,140	1,140	
75	XX003216	^ UNIT DUCT, 600 V, 3-1C NO. 6, 1/C NO. 6 GROUND, (XLP-- TYPE USE), 1 1/4" DIA. POLYETHYLENE	FOOT	2,300	2,300	
76	XX002868	TEMPORARY DITCH CHECKS (SPECIAL)	EACH	8	8	
77	XX003535	AGGREGATE BASE COURSE, TYPE B 2"	SQ YD	167	167	
78	XX003689	BUS SHELTER	EACH	1	1	
79	XX003817	GRATING FOR CONCRETE FLARED END SECTION, 12"	EACH	3	3	
80	XX004878	MAINTENANCE OF TEMPORARY EROSION CONTROL SYSTEM	L SUM	1	1	
81	XX006277	TEMPORARY SEDIMENT TRAP	EACH	1	1	
82	Z0019600	DUST CONTROL WATERING	UNIT	3	3	
83	Z0067700	STEEL CASINGS 20"	FOOT	100	100	
84	Z0076600	^^ TRAINEES	FOOT	500	500	
85	XX007165	^ LIGHT POLE ALUMINUM, 32 FT. M.H., 8 FT. MAST ARM	EACH	9	9	
86	XX007166	^ LIGHT POLE ALUMINUM, 32 FT. M.H., 8 FT. MAST ARM -- TWIN	EACH	7	7	

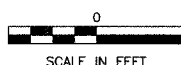
^ DENOTES SPECIALTY ITEM
^^ DENOTES CONSTRUCTION TYPE CODE Y080

REVISIONS	
NAME	DATE
PRE-FINAL SUBMITTAL	05.31.07
FINAL SUBMITTAL	08.31.07

CITY OF NAPERVILLE

SUMMARY OF QUANTITIES

95TH STREET PARK AND RIDE

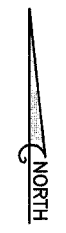


SCALE IN FEET

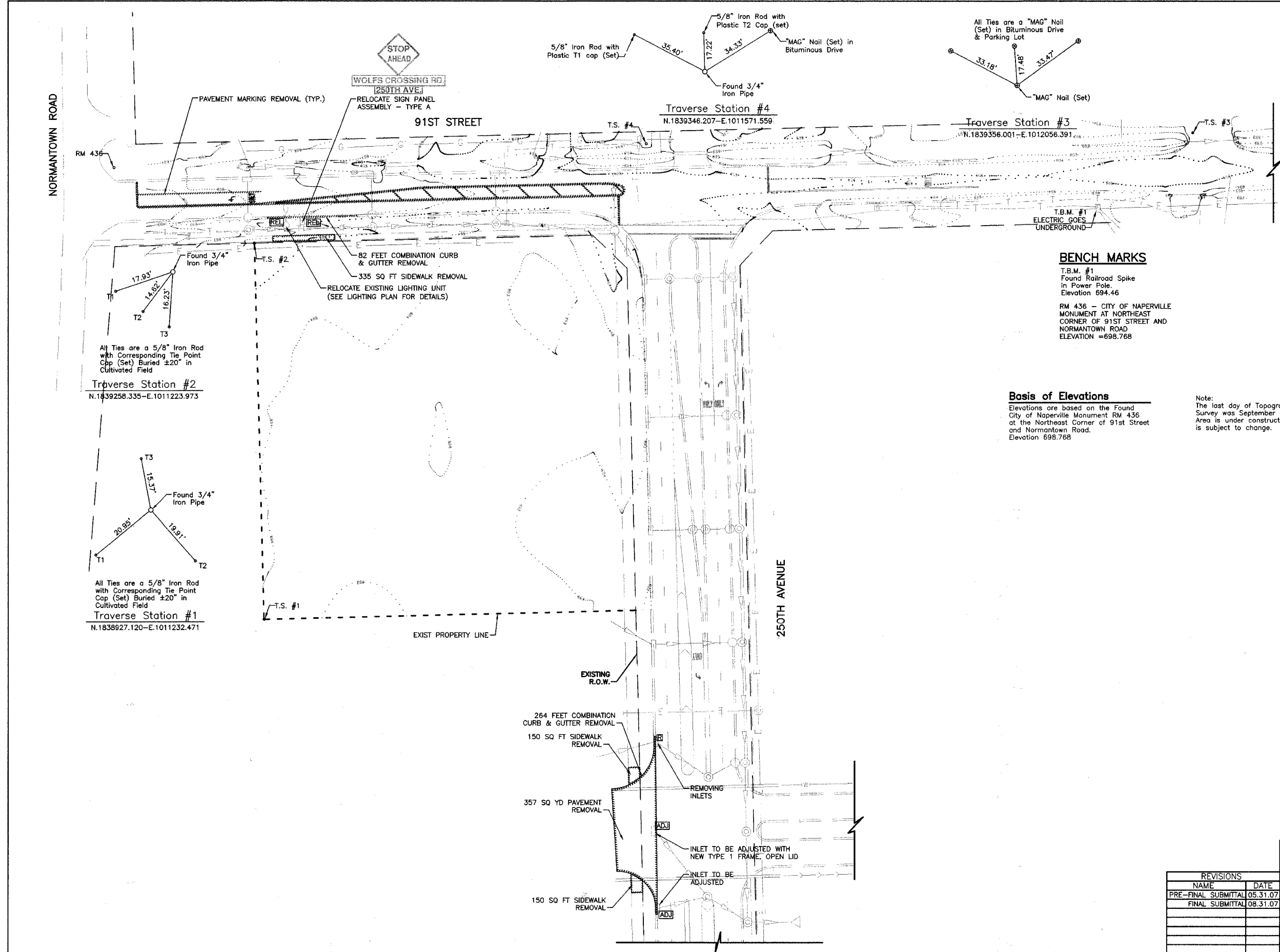
DATE: 11/26/2007
DESIGNED BY: RTM
TECHNICIAN: JRR
CHECKED BY: JRV

FILE NO.	SECTION	COUNTY	TOTAL SHEETS	SHEET NO.
*	06-00132-00-PK	WILL	15	4
STA.	..*	TO STA.	* ..	
		LINKS		

CONTRACT NUMBER 83974



GRAPHIC SCALE



BENCH MARKS

T.B.M. #1
 Found Railroad Spike
 in Power Pole.
 Elevation 694.46

RM 436 - CITY OF NAPERVILLE
 MONUMENT AT NORTHEAST
 CORNER OF 91ST STREET AND
 NORMANTOWN ROAD
 ELEVATION = 698.768

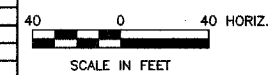
Basis of Elevations

Elevations are based on the Found
 City of Naperville Monument RM 436
 at the Northeast Corner of 91st Street
 and Normantown Road.
 Elevation 698.768

Note:
 The last day of Topographic
 Survey was September 1, 2006.
 Area is under construction and
 is subject to change.

CITY OF NAPERVILLE
EXISTING CONDITIONS AND DEMOLITION
95TH STREET PARK AND RIDE

REVISIONS	
NAME	DATE
PRE-FINAL SUBMITTAL	05.31.07
FINAL SUBMITTAL	08.31.07



DATE: 11/26/2007
 DESIGNED BY: RTM
 TECHNICIAN: JRR
 CHECKED BY: JRV

MAINTENANCE/INSPECTION PROCEDURES

THE FOLLOWING ARE THE INSPECTION AND MAINTENANCE PROCEDURES THAT WILL BE USED TO MAINTAIN EROSION AND SEDIMENT CONTROL:

1. ALL CONTROL MEASURES WILL BE INSPECTED AT LEAST ONCE EACH WEEK AND FOLLOWING ANY STORM EVENT OF 0.5 INCHES ARE GREATER.
2. ALL MEASURES WILL BE MAINTAINED IN GOOD WORKING ORDER; IF A REPAIR IS NECESSARY, IT WILL BE INITIATED WITHIN 24 HOURS OF REPORT.
3. BUILT-UP SEDIMENT WILL BE REMOVED FROM SILT FENCE WHEN IT HAS REACHED ONE-THIRD THE HEIGHT OF THE FENCE. THIS SEDIMENT SHALL BE RESPREAD AND VEGETATED.
4. SILT FENCE WILL BE INSPECTED FOR DEPTH OF SEDIMENT, TEARS, TO SEE IF THE FABRIC IS SECURELY ATTACHED TO THE FENCE POSTS, AND TO SEE THAT THE FENCE POSTS ARE FIRMLY IN THE GROUND.

5. THE SEDIMENT BASIN WILL BE INSPECTED FOR DEPTH OF SEDIMENT, AND BUILT-UP SEDIMENT WILL BE REMOVED AS REQUIRED DURING CONSTRUCTION AND AT THE END OF THE JOB.

6. A MAINTENANCE INSPECTION REPORT WILL BE MADE AFTER EACH INSPECTION. A COPY OF THE REPORT FORM TO BE COMPLETED BY THE INSPECTOR IS ENCLOSED IN THE SPECIFICATIONS.

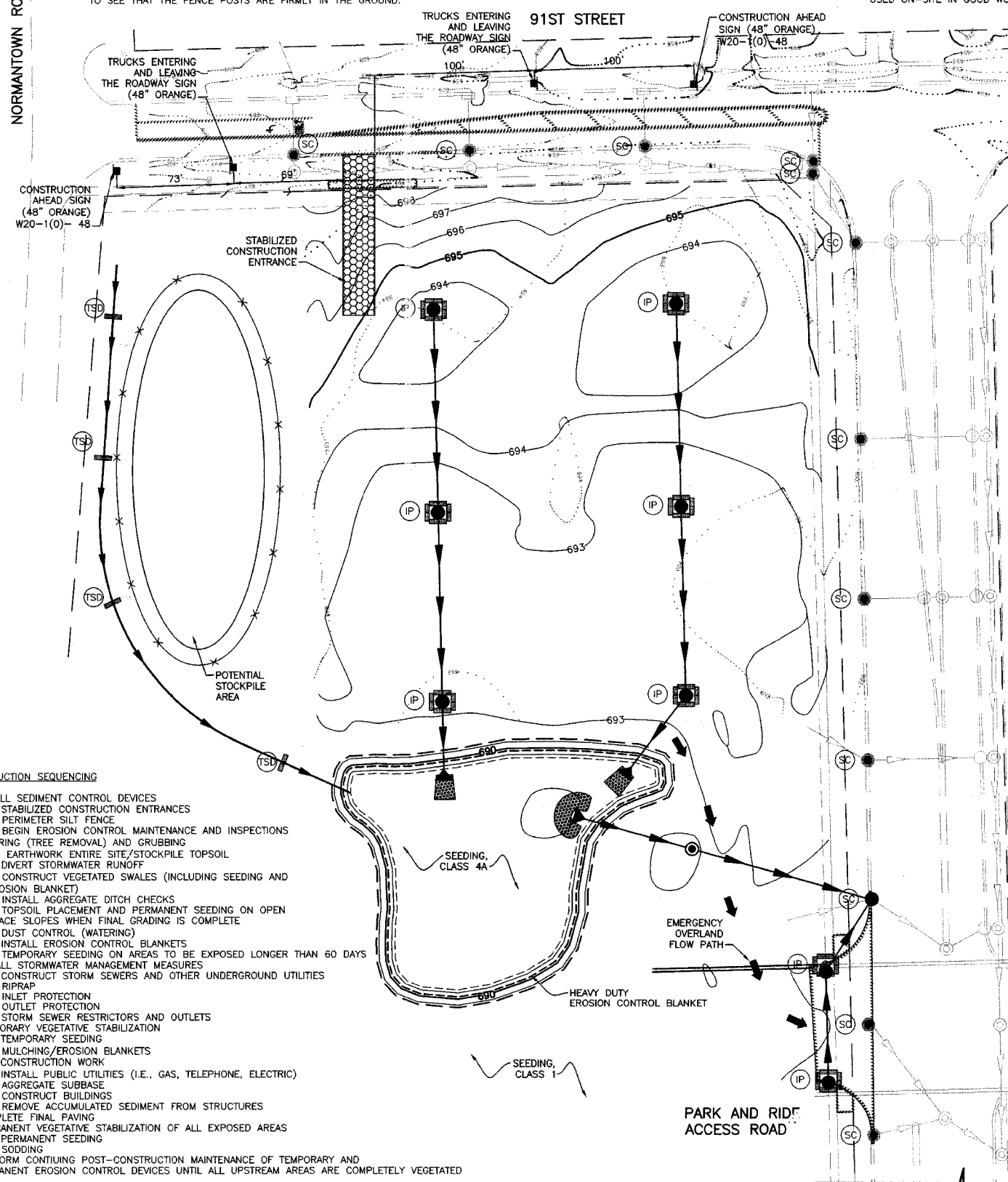
7. THE SITE SUPERINTENDANT WILL SELECT THREE INDIVIDUALS WHO WILL BE RESPONSIBLE FOR INSPECTIONS, MAINTENANCE AND REPAIR ACTIVITIES, AND FILLING OUT THE INSPECTION AND MAINTENANCE REPORT.

8. PERSONNEL SELECTED FOR INSPECTION AND MAINTENANCE RESPONSIBILITIES WILL RECEIVE TRAINING FROM THE INDIVIDUAL WHO MANAGES THE DAY-TO-DAY OPERATIONS, IN ALL INSPECTION AND MAINTENANCE PRACTICES NECESSARY FOR KEEPING THE EROSION AND SEDIMENT CONTROLS USED ON-SITE IN GOOD WORKING ORDER.

FILE NO.	SECTION	COUNTY	TOTAL SHEETS	SHEET NO.
06-00132-00-PK	WILL	WILL	15	5
STA. * *	TO STA. * *			
MARK				

CONTRACT NUMBER 83974

NORMANTOWN ROAD



NOTES:

1. SEE CONSTRUCTION DETAIL SHEET FOR EROSION CONTROL DETAILS.
2. PROJECT LIMITS ARE THE R.O.W. LINES OF 250TH AVENUE, NORMANTOWN ROAD AND 91ST STREET.

MAINTENANCE

THE EXCAVATING AND UNDERGROUND CONTRACTOR SHALL BE RESPONSIBLE FOR THE INITIAL CONSTRUCTION OF THE EROSION CONTROL MEASURES SHOWN IN THE PLAN, AND SHALL BE RESPONSIBLE FOR THE MAINTENANCE OF SAID FACILITIES UNTIL THE COMPLETION OF HIS FINAL GRADING OPERATIONS AFTER CONSTRUCTION OF THOSE IMPROVEMENTS IN HIS CONTRACT. THE CONTRACTOR SHALL REQUEST IN WRITING A RELEASE FROM THE OWNER FOR MAINTENANCE OF THE SITE UPON COMPLETION OF THIS WORK. THE OWNER SHALL ISSUE SAID RELEASE WITHIN 15 DAYS OF THE CONTRACTOR'S REQUEST, PROVIDING THE CONTRACTOR HAS COMPLETED ALL WORK REQUIRED UNDER THE CONTRACT. THE CONTRACTOR'S EROSION CONTROL MAINTENANCE RESPONSIBILITIES SHALL BE EXCLUSIVE OF THE CONSTRUCTION WARRANTY AND/OR GUARANTEE PERIOD.

QUALIFIED PERSONNEL SHALL INSPECT DISTURBED AREAS OF THE CONSTRUCTION SITE THAT HAVE NOT BEEN FINALLY STABILIZED, STRUCTURAL CONTROL MEASURES, AND LOCATIONS WHERE VEHICLES ENTER OR EXIT THE SITE AT LEAST ONCE EVERY SEVEN (7) CALENDAR DAYS AND WITHIN 24 HOURS OF THE END OF A STORM THAT IS 0.5 INCH OR GREATER OR EQUIVALENT SNOWFALL.

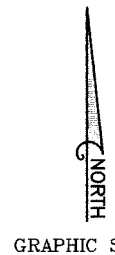
DISTURBED AREAS AND AREAS USED FOR STORAGE OF MATERIALS THAT ARE EXPOSED TO PRECIPITATION SHALL BE INSPECTED FOR EVIDENCE OF, OR THE POTENTIAL FOR, POLLUTANTS ENTERING THE DRAINAGE SYSTEM. EROSION AND SEDIMENT CONTROL MEASURES IDENTIFIED IN THE PLAN SHALL BE OBSERVED TO ENSURE THAT THEY ARE OPERATING CORRECTLY. WHERE DISCHARGE LOCATIONS OR POINTS ARE ACCESSIBLE, THEY SHALL BE INSPECTED TO ASCERTAIN WHETHER EROSION CONTROL MEASURES ARE EFFECTIVE IN PREVENTING SIGNIFICANT IMPACTS TO RECEIVING WATERS. LOCATIONS WHERE VEHICLES ENTER OR EXIT THE SITE SHALL BE INSPECTED FOR EVIDENCE OF OFFSITE SEDIMENT TRACKING.

BASED ON THE RESULTS OF THE INSPECTION, THE DESCRIPTION OF POTENTIAL POLLUTANT SOURCES IDENTIFIED IN THE PLAN AND POLLUTION PREVENTION MEASURES IDENTIFIED IN THE PLAN SHALL BE REVISED AS APPROPRIATE AS SOON AS PRACTICABLE AFTER SUCH INSPECTION. SUCH MODIFICATIONS SHALL PROVIDE FOR TIMELY IMPLEMENTATION OF ANY CHANGES TO THE PLAN WITH SEVEN (7) CALENDAR DAYS FOLLOWING THE INSPECTION.

A REPORT SUMMARIZING THE SCOPE OF THE INSPECTION, NAME(S) AND QUALIFICATIONS OF PERSONNEL MAKING THE INSPECTION, THE DATE(S) OF THE INSPECTION, MAJOR OBSERVATIONS RELATING TO THE IMPLEMENTATION OF THE STORM WATER POLLUTION PREVENTION PLAN, AND ACTIONS TAKEN SHALL BE MADE AND RETAINED AS PART OF THE STORM WATER POLLUTION PREVENTION PLAN FOR AT LEAST THREE (3) YEARS AFTER THE DATE OF INSPECTION.

CONSTRUCTION SEQUENCING

1. INSTALL SEDIMENT CONTROL DEVICES
 - A. STABILIZED CONSTRUCTION ENTRANCES
 - B. PERIMETER SILT FENCE
 - C. BEGIN EROSION CONTROL MAINTENANCE AND INSPECTIONS
2. CLEARING (TREE REMOVAL) AND GRUBBING
3. MASS EARTHWORK ENTIRE SITE/STOCKPILE TOPSOIL
 - A. DIVERT STORMWATER RUNOFF
 - B. CONSTRUCT VEGETATED SWALES (INCLUDING SEEDING AND EROSION BLANKET)
 - C. INSTALL AGGREGATE DITCH CHECKS
 - D. TOPSOIL PLACEMENT AND PERMANENT SEEDING ON OPEN SPACE SLOPES WHEN FINAL GRADING IS COMPLETE
 - E. DUST CONTROL (WATERING)
 - F. INSTALL EROSION CONTROL BLANKETS
 - G. TEMPORARY SEEDING ON AREAS TO BE EXPOSED LONGER THAN 60 DAYS
4. INSTALL STORMWATER MANAGEMENT MEASURES
 - A. CONSTRUCT STORM SEWERS AND OTHER UNDERGROUND UTILITIES
 - B. RIPRAP
 - C. INLET PROTECTION
 - D. OUTLET PROTECTION
 - E. STORM SEWER RESTRICTORS AND OUTLETS
5. TEMPORARY VEGETATIVE STABILIZATION
 - A. TEMPORARY SEEDING
 - B. MULCHING/EROSION BLANKETS
6. SITE CONSTRUCTION WORK
 - A. INSTALL PUBLIC UTILITIES (I.E., GAS, TELEPHONE, ELECTRIC)
 - B. AGGREGATE SUBBASE
 - C. CONSTRUCT BUILDINGS
 - D. REMOVE ACCUMULATED SEDIMENT FROM STRUCTURES
7. COMPLETE FINAL PAVING
8. PERMANENT VEGETATIVE STABILIZATION OF ALL EXPOSED AREAS
 - A. PERMANENT SEEDING
 - B. SODDING
9. PERFORM CONTINUING POST-CONSTRUCTION MAINTENANCE OF TEMPORARY AND PERMANENT EROSION CONTROL DEVICES UNTIL ALL UPSTREAM AREAS ARE COMPLETELY VEGETATED



SOIL PROTECTION CHART

STABILIZATION CHART	JAN	FEB	MAR	APR	MAY	JUN	JUL	AUG	SEP	OCT	NOV	DEC
PERMANENT SEEDINGS			A			*	*					
DORMANT SEEDINGS	B									B		
TEMPORARY SEEDINGS			C				D					
SODDING			E**									
MULCHING			F									

- A - REFER TO LANDSCAPE PLANS FOR PERMANENT SEED MIXTURES AND LOCATIONS
- B - KENTUCKY BLUEGRASS 135 LBS./AC. MIXED WITH PERENNIAL RYEGRASS 45 LBS./AC. AND 2 TONS STRAW MULCH PER ACRE
- C - SPRING OATS 100 LBS./AC.
- D - WHEAT OR CEREAL RYE 150 LBS./AC.
- E - SOD (NURSERY GROWN KENTUCKY BLUEGRASS)
- F - STRAW MULCH 2 TONS PER ACRE
- * IRRIGATE AS NECESSARY
- ** IRRIGATION AS NECESSARY TO ESTABLISH SOD

CONTRACTORS

THE STORM WATER POLLUTION PREVENTION PLAN MUST CLEARLY IDENTIFY FOR EACH MEASURE IDENTIFIED IN THE PLAN, THE CONTRACTOR(S) OR SUBCONTRACTOR(S) THAT WILL IMPLEMENT THE MEASURE. ALL CONTRACTORS AND SUBCONTRACTORS IDENTIFIED IN THE PLAN MUST SIGN A COPY OF THE CERTIFICATION STATEMENT IN PARAGRAPH B OF THE PLAN. ALL CERTIFICATIONS MUST BE INCLUDED IN THE STORM WATER POLLUTION PREVENTION PLAN EXCEPT FOR OWNERS THAT ARE ACTING AS CONTRACTOR.

CERTIFICATION STATEMENT. ALL CONTRACTORS AND SUBCONTRACTORS IDENTIFIED IN A STORM WATER POLLUTION PREVENTION PLAN SHALL SIGN A COPY OF THE FOLLOWING CERTIFICATION STATEMENT BEFORE CONDUCTING ANY SERVICE AT THE SITE IDENTIFIED IN THE STORM WATER POLLUTION PREVENTION PLAN. I CERTIFY UNDER PENALTY OF LAW THAT I UNDERSTAND THE TERMS AND CONDITIONS OF THE GENERAL NATIONAL POLLUTION DISCHARGE ELIMINATION SYSTEM (NPDES) PERMIT (LR100000) THAT AUTHORIZES THE STORM WATER DISCHARGES ASSOCIATED WITH INDUSTRIAL ACTIVITY FROM THE CONSTRUCTION SITE IDENTIFIED AS PART OF THIS CERTIFICATION. THE CERTIFICATION MUST INCLUDE THE NAME AND TITLE OF THE PERSON PROVIDING THE SIGNATURE; THE NAME, ADDRESS, AND TELEPHONE NUMBER OF THE CONTRACTING FIRM; THE ADDRESS (OR OTHER IDENTIFYING DESCRIPTION) OF THE SITE; AND THE DATE THE CERTIFICATION IS MADE.

CERTIFICATION STATEMENT. ALL CONTRACTORS AND SUBCONTRACTORS IDENTIFIED IN A STORM WATER POLLUTION PREVENTION PLAN SHALL SIGN A COPY OF THE FOLLOWING CERTIFICATION STATEMENT BEFORE CONDUCTING ANY SERVICE AT THE SITE IDENTIFIED IN THE STORM WATER POLLUTION PREVENTION PLAN. I CERTIFY UNDER PENALTY OF LAW THAT I UNDERSTAND THE TERMS AND CONDITIONS OF THE GENERAL NATIONAL POLLUTION DISCHARGE ELIMINATION SYSTEM (NPDES) PERMIT (LR100000) THAT AUTHORIZES THE STORM WATER DISCHARGES ASSOCIATED WITH INDUSTRIAL ACTIVITY FROM THE CONSTRUCTION SITE IDENTIFIED AS PART OF THIS CERTIFICATION.

NAME _____ SIGNATURE _____

TITLE _____ DATE _____

TELEPHONE _____

WITNESS _____

LEGEND

- - - - - EXISTING MINOR CONTOUR LINE
- — — — EXISTING MAJOR CONTOUR LINE
- — — — 890 PROPOSED MASS GRADING MAJOR CONTOUR LINE
- — — — PROPOSED MASS GRADING MINOR CONTOUR LINE
- — — — DIVERSION DIKE
- — — — DRAINAGE DIVIDE
- — — — PERIMETER EROSION BARRIER
- — — — STONE RIPRAP, CLASS A3 W/ FILTER FABRIC
- IP [] INLET AND PIPE PROTECTION
- ST [] TEMPORARY SEDIMENT TRAP
- SC [] SEDIMENT CONTROL, DRAINAGE INLET FILTER (PAID FOR AS INLET FILTER)
- ← 100 YEAR OVERLAND PATH
- TSD [] TRIANGLE SILT DIKE, (PAID FOR AS TEMPORARY DITCH CHECKS (SPECIAL))

REVISIONS	
NAME	DATE
PRE-FINAL SUBMITTAL	05.31.07
FINAL SUBMITTAL	08.31.07

CITY OF NAPERVILLE

EROSION CONTROL

95TH STREET PARK AND RIDE

DATE: 11/26/2007
DESIGNED BY: RTM
TECHNICIAN: JRR
CHECKED BY: JRV

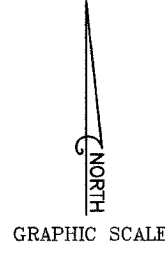
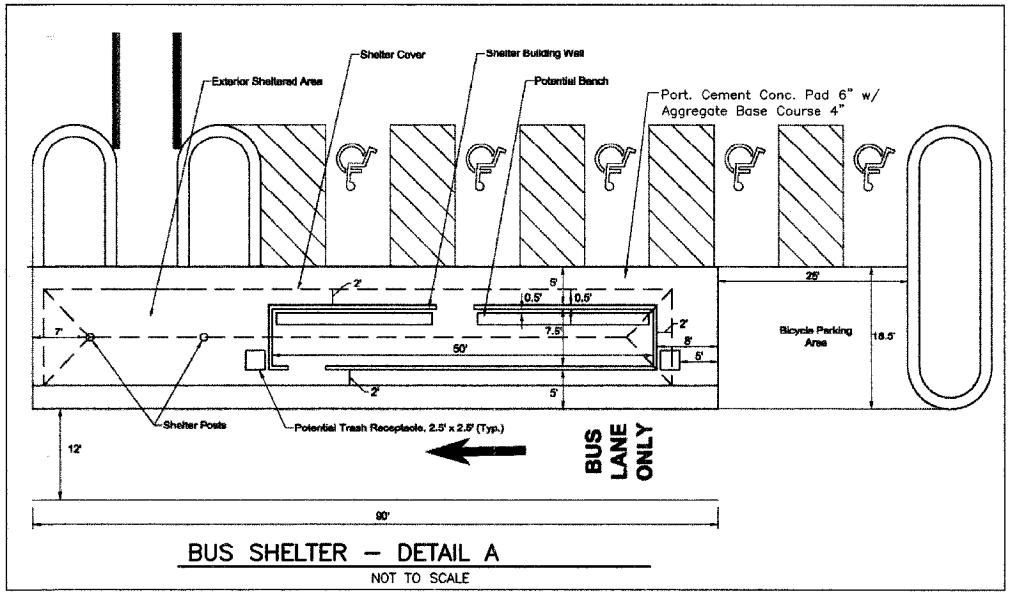
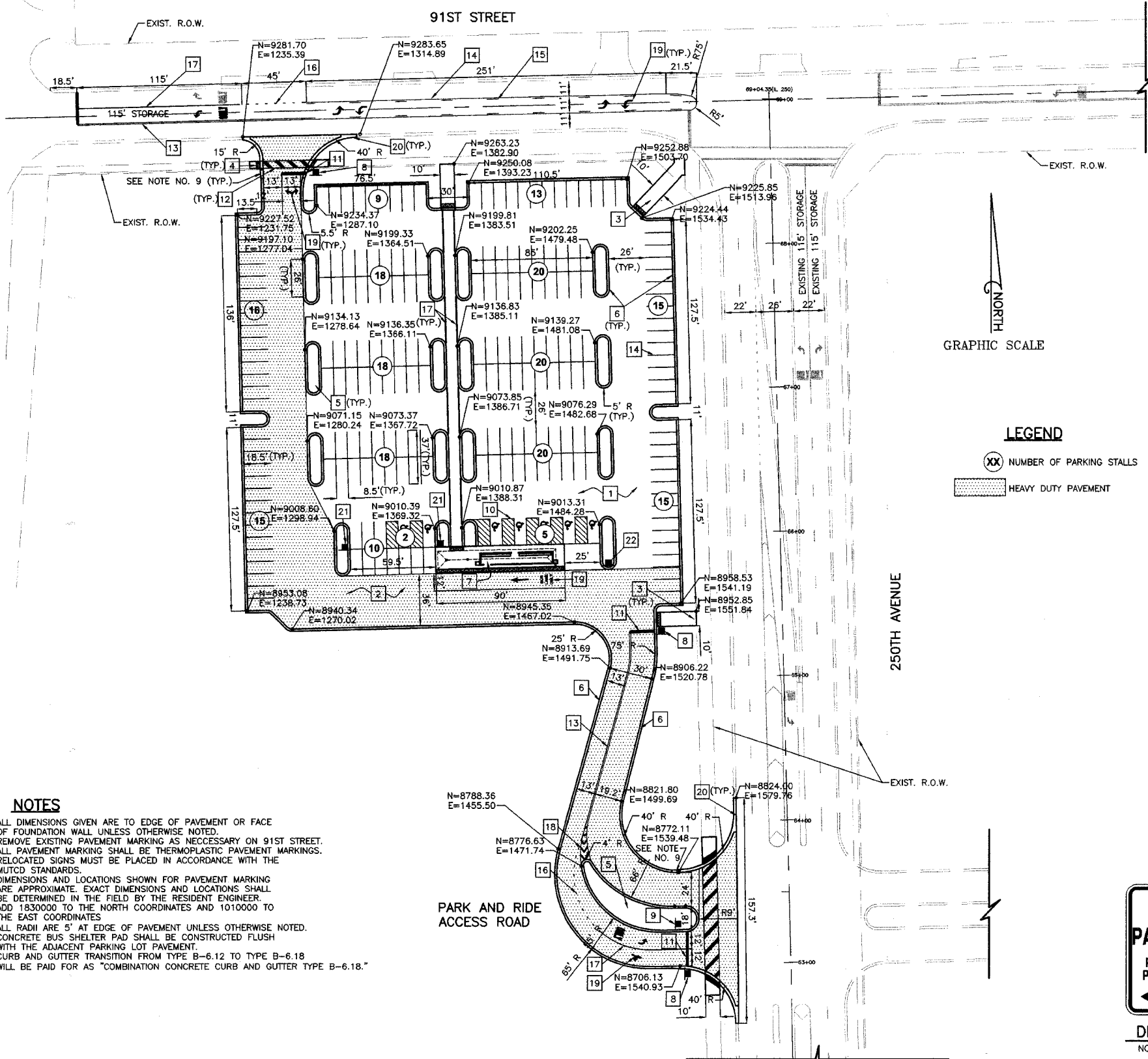
40 0 40 HORIZ.
SCALE IN FEET

PARKING DATA
 TOTAL REGULAR PARKING 207
 TOTAL HANDICAP PARKING 7
 TOTAL PARKING 214

FILE NO.	SECTION	COUNTY	TOTAL SHEETS	SHEET NO.
* 06-00132-00-PK	WILL	15	6	
STA.	TO STA.			

CONTRACT NUMBER 83974

NORMANTOWN ROAD



LEGEND
 (XX) NUMBER OF PARKING STALLS
 [Hatched Box] HEAVY DUTY PAVEMENT

KEYED NOTES

- 1 PARKING AREA PAVEMENT, REF. PARKING AREA PAVEMENT DETAIL
- 2 HEAVY DUTY PAVEMENT, REF. HEAVY DUTY PAVEMENT DETAIL
- 3 P.C.C. SIDEWALK, 5" W/ AGGREGATE BASE COURSE TYPE B 2", REF. CITY OF NAPERVILLE STD. PVMT 3
- 4 DETECTABLE WARNING
- 5 TOPSOIL FURNISH & PLACE, 12" & SODDING
- 6 COMBINATION CONCRETE CURB AND GUTTER, TYP B-6.12, REF. CITY OF NAPERVILLE STD. PVMT 12
- 7 BUS SHELTER, REF. DETAIL A
- 8 STOP SIGN, R1-1, SIGN PANEL TYPE 1 3636
- 9 LEFT TURN ONLY SIGN, R3-5L, SIGN PANEL TYPE 1 2430
- 10 ACCESSIBLE PARKING SPACE MARKINGS, REF. CITY OF NAPERVILLE STD. MISC 11
- 11 WHITE STOP LINE, THPL PVT MK LINE, 24"
- 12 CROSSWALK, REF. CITY OF NAPERVILLE STD. MISC 12
- 13 DOUBLE YELLOW CENTERLINE, 11" C-C THPL PVT MK LINE, 4"
- 14 YELLOW LANE LINE, THPL PVT MK LINE, 4"
- 15 YELLOW LANE LINE, 10' LINE - 30' SPACE, THPL PVT MK LINE, 4"
- 16 WHITE DOTTED LINE, THPL PVT MK LINE, 6" (2' LINE WITH 6" SPACE)
- 17 WHITE LANE LINE, THPL PVT MK LINE, 6"
- 18 WHITE CHANNELIZATION MARKINGS @ 45', THPL PVT MK LINE, 12"
- 19 WHITE LETTERS AND ARROWS, THPL PVT MK LTR & SYM
- 20 COMBINATION CONCRETE CURB AND GUTTER, TYP B-6.18, REF. CITY OF NAPERVILLE STD. PVMT 12
- 21 PACE VAN POOL PARKING SIGN, SPECIAL, SIGN PANEL TYPE 1 1218, REF. DETAIL B
- 22 KISS N' RIDE SIGN, SPECIAL, SIGN PANEL TYPE 1 1218, REF. DETAIL C

NOTES

1. ALL DIMENSIONS GIVEN ARE TO EDGE OF PAVEMENT OR FACE OF FOUNDATION WALL UNLESS OTHERWISE NOTED.
2. REMOVE EXISTING PAVEMENT MARKING AS NECESSARY ON 91ST STREET.
3. ALL PAVEMENT MARKING SHALL BE THERMOPLASTIC PAVEMENT MARKINGS. RELOCATED SIGNS MUST BE PLACED IN ACCORDANCE WITH THE MUTCD STANDARDS.
4. DIMENSIONS AND LOCATIONS SHOWN FOR PAVEMENT MARKING ARE APPROXIMATE. EXACT DIMENSIONS AND LOCATIONS SHALL BE DETERMINED IN THE FIELD BY THE RESIDENT ENGINEER.
5. ADD 1830000 TO THE NORTH COORDINATES AND 1010000 TO THE EAST COORDINATES.
6. ALL RADII ARE 5' AT EDGE OF PAVEMENT UNLESS OTHERWISE NOTED.
7. CONCRETE BUS SHELTER PAD SHALL BE CONSTRUCTED FLUSH WITH THE ADJACENT PARKING LOT PAVEMENT.
8. CURB AND GUTTER TRANSITION FROM TYPE B-6.12 TO TYPE B-6.18 WILL BE PAID FOR AS "COMBINATION CONCRETE CURB AND GUTTER TYPE B-6.18."



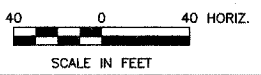
DETAIL B
NOT TO SCALE



DETAIL C
NOT TO SCALE

REVISIONS	
NAME	DATE
PRE-FINAL SUBMITTAL	05.31.07
FINAL SUBMITTAL	08.31.07

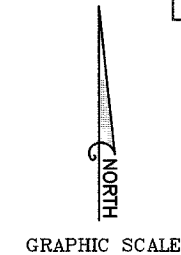
CITY OF NAPERVILLE
SITE LAYOUT
 95TH STREET PARK AND RIDE



DATE: 11/26/2007
 DESIGNED BY: RTM
 TECHNICIAN: JRR
 CHECKED BY: JRV

PAL. RE.	SECTION	COUNTY	TOTAL SHEETS	SHEET NO.
#	06-00132-00-PK	WILL	15	7
STA.	..*	TO STA.	* .	
	ELAPSED			

CONTRACT NUMBER 83974



NORMANTOWN ROAD

91ST STREET

250TH AVENUE

PARK AND RIDE ACCESS ROAD

SITE DATA
 TOTAL SITE AREA 179,932 SQ. FT. (4.13 ACRES)
 TOTAL PERVIOUS AREA 79,204 SQ. FT. (1.82 ACRES) (44%)
 TOTAL IMPERVIOUS AREA 100,728 SQ. FT. (2.31 ACRES) (56%)

DRAINAGE DATA
 USING FIGURE 7 OF THE WILL COUNTY TECHNICAL GUIDANCE MANUAL

2_YR STORM WITH 56% IMPERVIOUS AREA
 DETENTION VOLUME = 0.11 AC-FT/AC
 UNIT AREA DETENTION METHOD = 0.11 AC-FT/AC X 4.13 AC = 0.45 AC-FT
 RELEASE RATE = 0.04 CFS/AC X 4.13 AC = 0.17 CFS

100_YR STORM WITH 56% IMPERVIOUS AREA
 DETENTION VOLUME = 0.33 AC-FT/AC
 UNIT AREA DETENTION METHOD = 0.33 AC-FT/AC X 4.13 AC = 1.36
 AC-FT RELEASE RATE = 0.15 CFS/AC X 4.13 AC = 0.62 CFS

ELEV.	HEIGHT	AREA (SQ)	AREA (ACRE)	AVERAGE AREA (ACRE)	INCREMENTAL VOLUME (AC-FT)	TOTAL VOLUME (AC-FT)	DESCRIPTION
688.2	0.00	0.00	0.00	0.00	0.00	0.00	Bottom Sedimentation Basin
688.46	0.26	1608	0.36	0.36	0.22	0.22	Top of Sedimentation Basin
688.45	0.25	1508	0.34	0.34	0.22	0.22	Bottom Detention Area
688	0.00	17894	0.41	0.41	0.27	0.48	2-Yr Detention Paved Area
688.93	0.37	15296	0.34	0.34	0.17	0.65	Top of 2-Year Detention Volume
688	0.00	2226	0.05	0.05	0.17	1.16	
688.00	0.00	22747	0.52	0.52	0.21	1.36	100-Yr Detention Paved Area
688.40	0.40	22753	0.52	0.52	0.21	1.56	Top of 100-Year Detention Volume

STORM STRUCTURES

- 1 CB TC T1F OL
RIM=693.50
INV.=689.90 (12" S)
- 2 CB TC T1F OL
RIM=693.00
INV.=690.00 (12" S)
- 3 RD CB 4 DIA T1F OL
RIM=692.00
INV.=689.27 (12" S & N)
- 4 RD CB 4 DIA T1F OL
RIM=692.00
INV.=689.38 (12" S & N)
- 5 RD CB 4 DIA T11F&G
RIM=692.00
INV.=688.68 (12" S & N)
- 6 RD CB 4 DIA T11F&G
RIM=692.00
INV.=688.79 (12" SW & N)
- 7 PRC FLAR END SEC 12 W/
GRATING-C FL END S 12
INV.=688.45 (12")
- 8 PRC FLAR END SEC 12 W/
GRATING-C FL END S 12
INV.=688.45 (12")
- 9 PRC FLAR END SEC 12 W/
GRATING-C FL END S 12
INV.=688.45 (12")
- 10 DR STR WITH RESTRICT
RIM=692.25
INV.=688.10
INV.=688.45 (2-1/2")
INV.=689.63 (3-1/8")
INV.=691.40 (TOP OF BAFFLE)
- 11 RD CB 4 DIA T3F&G
RIM=691.18
INV.=687.52 (12" W)
INV.=687.40 (12" SW & SE)
- 12 RD CB 4 DIA T11F&G
RIM=690.75
INV.=687.66 (12" S & NE)
- 13 CB TC T11F&G
RIM=690.75
INV.=688.00 (12" N)
- 14 INLET ADJ NEW T1F OL
RIM=690.50
- 15 INLET TO BE ADJUSTED
RIM=691.27
- 16 RELOCATE EXISTING LIGHTING UNIT
(SEE LIGHTING PLAN FOR DETAILS)
- 17 CONTRACTOR TO VERIFY LOCATION &
ELEVATION OF EXISTING FIELD TILES. FIELD
TILES ARE TO BE EXTENDED AND CONNECTED
TO DRAINAGE STRUCTURES.
- 18 EXIST 20" STEEL CASING PIPE
T/PIPE (W)=685.25
T/PIPE (E)=684.25
- 19 EXIST 20" STEEL CASING PIPE
T/PIPE (W)=683.00
T/PIPE (E)=682.50

STORM SEWER PIPES

- A STORM SEW CL A 1 12"
123 L.F. @ 0.50%
- B STORM SEW CL A 1 12"
123 L.F. @ 0.50%
- C STORM SEW CL A 1 12"
114 L.F. @ 0.50%
- D STORM SEW CL A 1 12"
114 L.F. @ 0.50%
- E STORM SEW CL A 1 12"
41 L.F. @ 0.50%
- F STORM SEW CL A 1 12"
55 L.F. @ 0.50%
- G STORM SEW CL A 1 12"
68 L.F. @ 0.50%
- H STORM SEW CL A 1 12"
112 L.F. @ 0.50%
- I STORM SEW CL A 1 12"
50 L.F. @ 0.50%
- J STORM SEW CL A 1 12"
66 L.F. @ 0.50%
- K PROP. STEEL CASINGS 20"
100 L.F. @ 0.00%
T/PIPE (W)=685.25
T/PIPE (E)=685.25

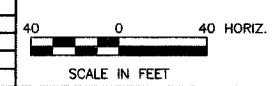
LEGEND

- (XX.XX) EXISTING SPOT ELEVATION
- LOT DIVIDES
- PR DRAINAGE DIVIDE
- XXX.XX NEW TOP OF CURB ELEVATION (+ 600)
- XXX.XX NEW EDGE OF PAVEMENT ELEVATION (+ 600)
- PR DETECTABLE WARNINGS
- PR LIGHTING BURIED
- PR LIGHTING UNIT

REVISIONS

NAME	DATE
PRE-FINAL SUBMITTAL	05.31.07
FINAL SUBMITTAL	08.31.07

CITY OF NAPERVILLE
SITE GRADING AND UTILITY
95TH STREET PARK AND RIDE



DATE: 11/26/2007
 DESIGNED BY: RTM
 TECHNICIAN: JRR
 CHECKED BY: JRV

PANEL NO.	SECTION	COUNTY	TOTAL SHEETS	SHEET NO.
*	06-00132-00-PK	WILL	15	8
STA.	**	TO STA.	*	*

CONTRACT NUMBER 83974

BILL OF MATERIALS

ITEM NUMBER	ITEM	UNIT	QUANTITY
80400100	ELECTRIC SERVICE INSTALLATION	EACH	1
80400200	ELECTRIC UTILITY SERVICE INSTALLATION	L SUM	1
81000600	CONDUIT IN TRENCH, 2" DIA., GALVANIZED STEEL	FOOT	40
81001000	CONDUIT IN TRENCH, 4" DIA., GALVANIZED STEEL	FOOT	140
81400100	HANDHOLE	EACH	2
81702400	ELECTRIC CABLE IN CONDUIT, 600V (XLP-TYPE USE) 3-1/C NO. 2	FOOT	20
81900200	TRENCH AND BACKFILL FOR ELECTRICAL WORK	FOOT	1980
82102250	LUMINAIRE, SODIUM VAPOR, HORIZONTAL MOUNT, 250 WATT	EACH	23
82500505	LIGHTING CONTROLLER, SPECIAL	EACH	1
83600400	POLE FOUNDATION, METAL	EACH	16
84400105	RELOCATE EXISTING LIGHTING UNIT	EACH	1
XX001368	PULL EXISTING CABLE FROM UNIT DUCT	FOOT	1140
XX003216	UNIT DUCT, 600V, 3-1/C NO. 6, 1/C NO. 6 GROUND, (XLP-TYPE USE), 1 1/4" DIA. POLYETHYLENE	FOOT	2300
	LIGHT POLE ALUMINUM, 32 FT. M.H., 8 FT. MAST ARM	EACH	9
	LIGHT POLE ALUMINUM, 32 FT. M.H., 8 FT. MAST ARM - TWIN	EACH	7

NOTES:

- RELOCATION OF THE EXISTING LIGHTING UNIT MUST BE COMPLETED THE SAME DAY. ALL LIGHTING MUST BE OPERATIONAL THAT SAME EVENING.
- THE EXISTING METAL FOUNDATION SHALL BE REUSED FOR THE RELOCATED LIGHTING UNIT. THE COST TO REMOVE AND REINSTALL THE METAL FOUNDATION SHALL BE INCLUDED IN THE PAY ITEM "RELOCATE EXISTING LIGHTING UNIT".
- IT SHALL BE THE CONTRACTOR'S RESPONSIBILITY TO VERIFY ALL DIMENSIONS AND CONDITIONS IN THE FIELD PRIOR TO ORDERING MATERIALS AND BEGINNING CONSTRUCTION.
- PAY ITEMS IN THE SUMMARY OF QUANTITIES HAVE BEEN ESTIMATED. IF, IN THE ENGINEER'S OPINION, ANY WORK IS NOT REQUIRED, THAT ITEM WILL BE DEDUCTED FROM THE CONTRACT AND NO ADDITIONAL COMPENSATION WILL BE ALLOWED.
- IT SHALL BE THE CONTRACTOR'S RESPONSIBILITY TO MARK THE PROPOSED LOCATIONS OF ALL LIGHT POLES FOR EXAMINATION AND CONFIRMATION WITH THE ENGINEER PRIOR TO INSTALLATION OF LIGHTING FOUNDATIONS.
- ANY WORK REQUIRED BY THE CONTRACTOR TO EXPOSE UNDERGROUND UTILITIES NEAR PROPOSED POLE FOUNDATIONS SHALL NOT BE PAID FOR SEPARATELY BUT SHALL BE INCLUDED IN THE COST OF "POLE FOUNDATION, METAL".
- THE CONTRACTOR SHALL BE RESPONSIBLE FOR THE ESTABLISHMENT OF FINISHED GRADE. THE ENGINEER MAY ASSIST THE CONTRACTOR, AS APPLICABLE, BUT THE RESPONSIBILITY FOR COORDINATING THE FINISHED GRADE ELEVATION WITH THE TOP OF THE FOUNDATION HEIGHTS SHALL REMAIN WITH THE CONTRACTOR.
- THE CABLE TRENCH SHALL BE BACKFILLED AND FIRMLY COMPACTED BEFORE ANY LIGHT STANDARD IS ERECTED.
- PHOTOCELL MATERIALS AND INSTALLATION ARE INCLUDED IN THE PAY ITEM "LIGHTING CONTROLLER, SPECIAL".
- GALVANIZED STEEL CONDUIT IN TRENCH TO BE CAPPED AT BOTH ENDS FOR FUTURE USE WILL NOT BE PAID FOR SEPARATELY BUT WILL BE INCLUDED IN THE PAY ITEM "CONDUIT IN TRENCH, 4" DIA., GALVANIZED STEEL".
- THE INSTALLATION OF CONDUIT SLEEVES AND UNIT DUCTS SHALL BE SEQUENCED WITH THE REPLACEMENT OF THE PROPOSED PAVEMENT INCLUDING DRIVEWAYS AND SIDEWALKS. IF CONDUIT OR UNIT DUCT IS PUSHED BECAUSE FINAL SURFACE IS IN PLACE, THERE WILL BE NO ADDITIONAL COMPENSATION FOR PUSHING THE CONDUIT OR UNIT DUCT.
- MULTI-UNIT DUCT OR CONDUIT RUNS SHALL BE INSTALLED IN COMMON TRENCH AND BACKFILLED. TRENCH AND BACKFILL WILL NOT BE PAID FOR EACH UNIT DUCT OR CONDUIT, BUT WILL BE PAID FOR THE LENGTH OF THE COMMON TRENCH ONLY.
- A CITY OF NAPERVILLE BUILDING PERMIT IS REQUIRED.

VILLAGE OF NAPERVILLE
95TH STREET PARK AND RIDE

PARKING LOT	Filename	Illuminance		
		Average Illuminance (foot-candles) E _{avg}	Minimum Illuminance (foot-candles) E _{min}	Uniformity Ratio E _{avg} to E _{min}
Naperville/IES Recommended Values	General Parking And Pedestrian Area Medium	2.4	0.6	4.0 : 1
Parking Lot	parking_lot_25 0w.A32	2.55	1.0	2.6 : 1
250th Avenue Entrance	parking_lot_25 0w.A32	2.50	1.1	2.3 : 1

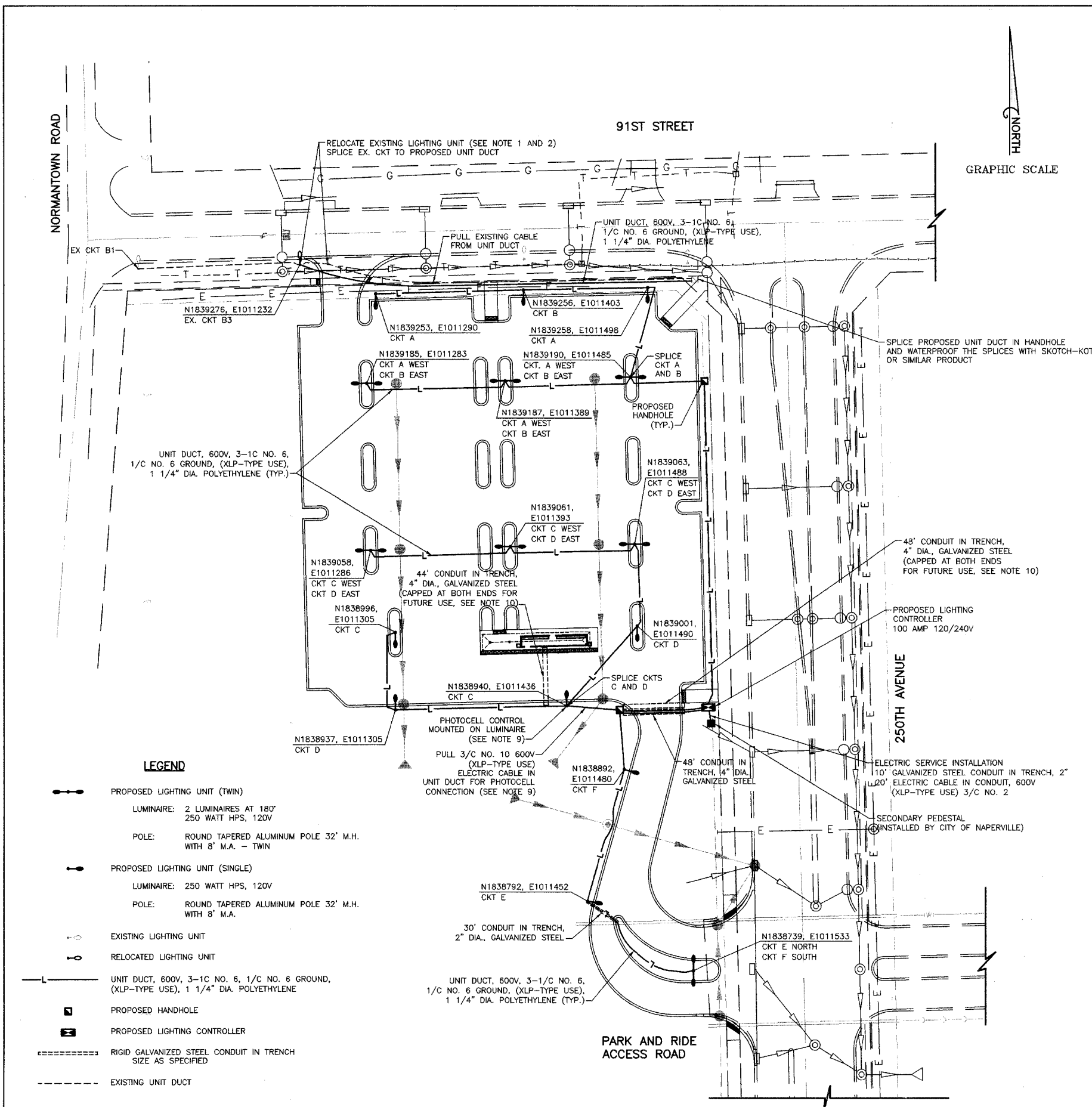
Combined LLF = 0.7 Mast Arm Length = 8 ft.
Lamp Lumens = 28,000 lumens Mounting Height = 32 ft.
Wattage = 250 watt HPS
Photometric file: GE1002.ies

CITY OF NAPERVILLE
LIGHTING PLAN
95TH STREET PARK AND RIDE

REVISIONS	
NAME	DATE
PRE-FINAL SUBMITTAL	05.31.07
FINAL SUBMITTAL	08.31.07

DATE: 11/26/2007
DESIGNED BY: DNM
TECHNICIAN: SJC
CHECKED BY: JRJ

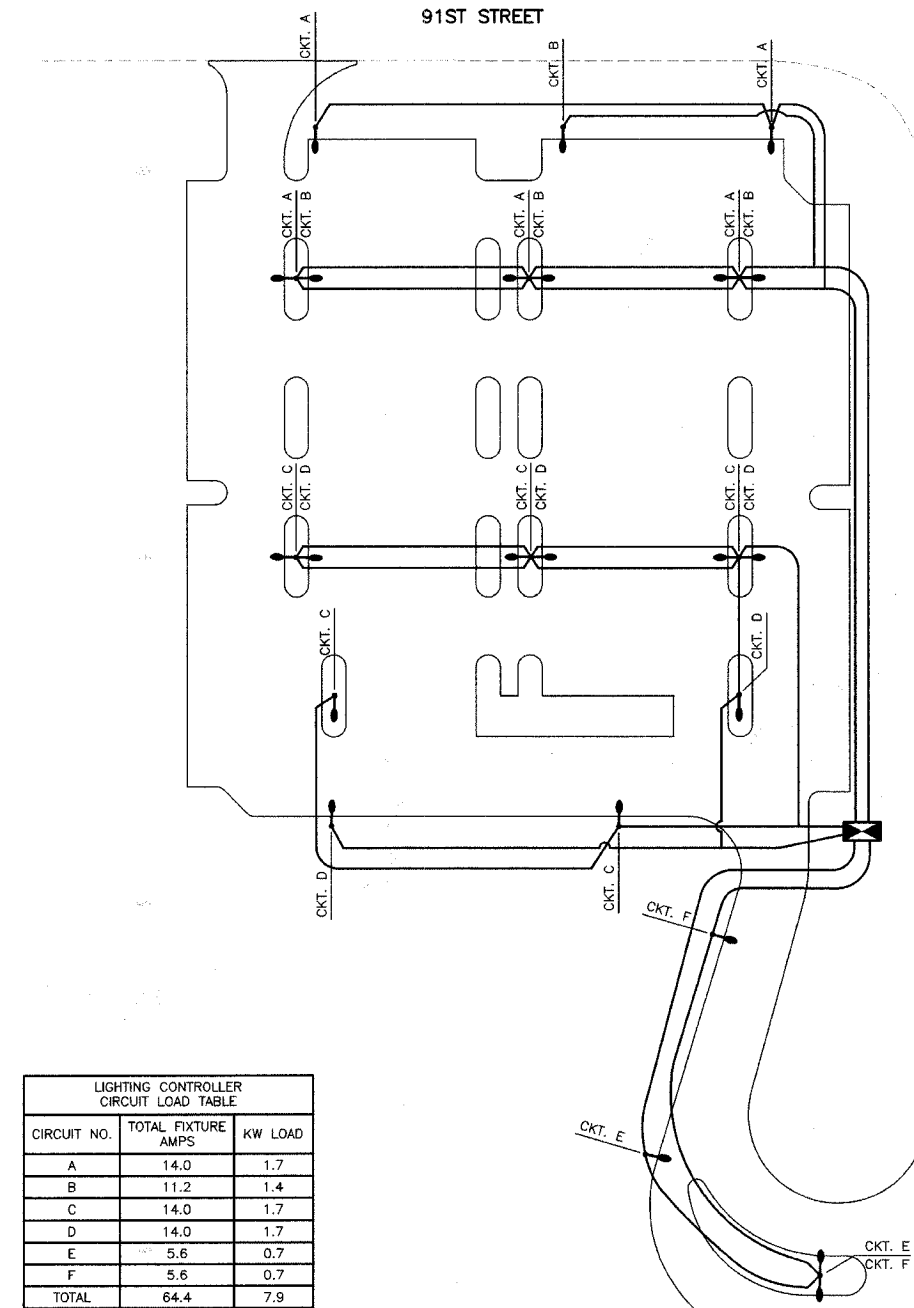
SCALE IN FEET



- LEGEND**
- PROPOSED LIGHTING UNIT (TWIN)
 - LUMINAIRE: 2 LUMINAIRES AT 180° 250 WATT HPS, 120V
 - POLE: ROUND TAPERED ALUMINUM POLE 32' M.H. WITH 8' M.A. - TWIN
 - PROPOSED LIGHTING UNIT (SINGLE)
 - LUMINAIRE: 250 WATT HPS, 120V
 - POLE: ROUND TAPERED ALUMINUM POLE 32' M.H. WITH 8' M.A.
 - EXISTING LIGHTING UNIT
 - RELOCATED LIGHTING UNIT
 - UNIT DUCT, 600V, 3-1/C NO. 6, 1/C NO. 6 GROUND, (XLP-TYPE USE), 1 1/4" DIA. POLYETHYLENE
 - PROPOSED HANDHOLE
 - PROPOSED LIGHTING CONTROLLER
 - RIGID GALVANIZED STEEL CONDUIT IN TRENCH SIZE AS SPECIFIED
 - EXISTING UNIT DUCT

PAGE NO.	SECTION	COUNTY	TOTAL SHEETS	SHEET NO.
*	06-00132-00-PK	WILL.	15	9
STA.	**	TO STA.	*	*
	LINE			

CONTRACT NUMBER 83974

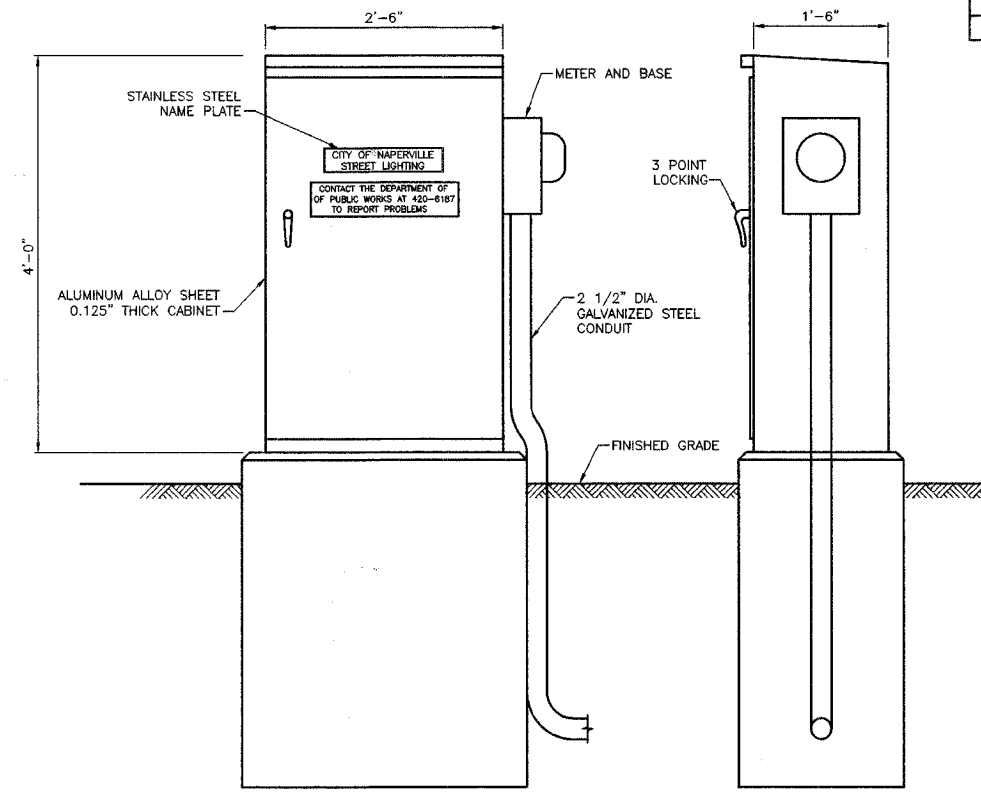
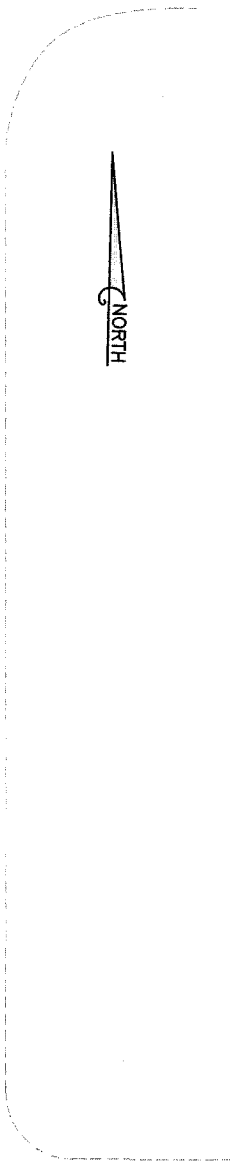


CIRCUIT NO.	TOTAL FIXTURE AMPS	KW LOAD
A	14.0	1.7
B	11.2	1.4
C	14.0	1.7
D	14.0	1.7
E	5.6	0.7
F	5.6	0.7
TOTAL	64.4	7.9

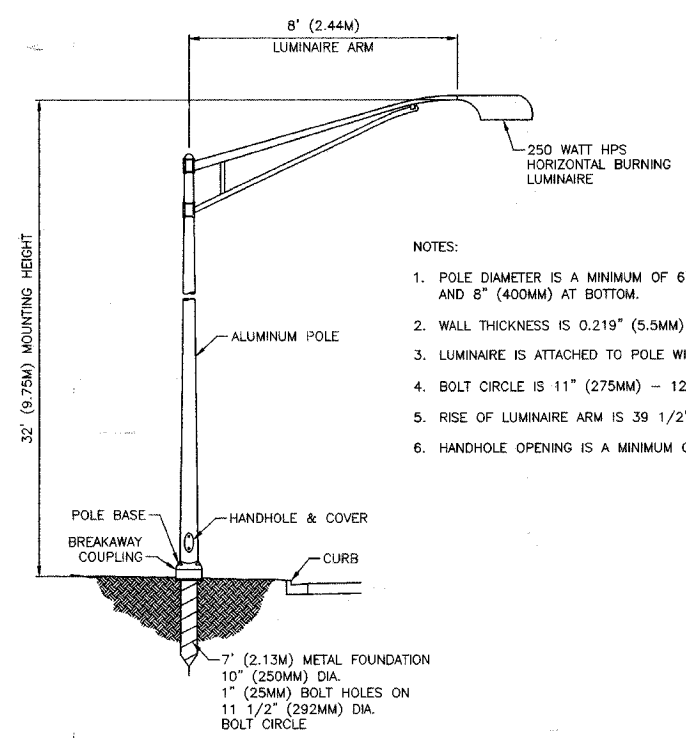
250W, 120V LUMINAIRE = 2.80 AMPS

- LEGEND**
- PROPOSED LIGHTING UNIT (DUAL)
 LUMINAIRE: 2 LUMINAIRES AT 180°
 250 WATT HPS, 120V
 POLE: ROUND TAPERED ALUMINUM POLE,
 32' M.H. WITH 8' M.A.
 - PROPOSED LIGHTING UNIT (SINGLE)
 LUMINAIRE: 250 WATT HPS, 120V
 POLE: ROUND TAPERED ALUMINUM POLE,
 32' M.H. WITH 8' M.A.
 - PROPOSED LIGHTING CONTROLLER

CIRCUIT DIAGRAM

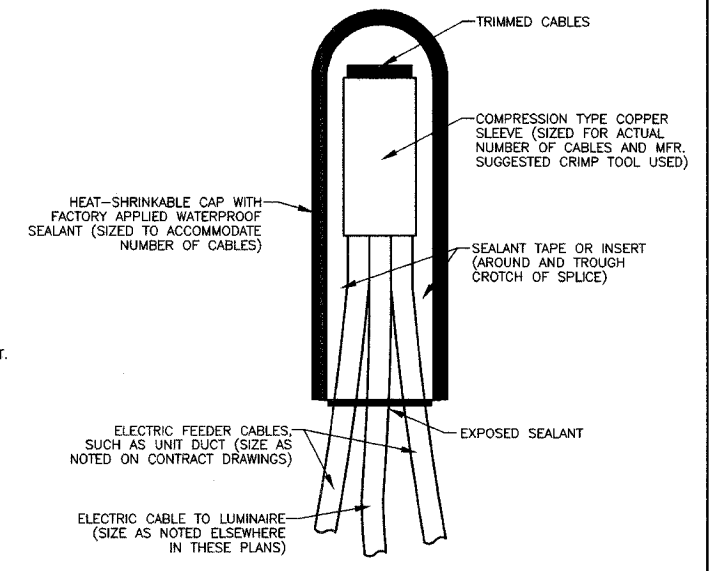


LIGHTING CONTROLLER, SPECIAL



32' (9.75M) ALUMINUM STREET LIGHTING WITH 8' MAST ARM

- NOTES:
- POLE DIAMETER IS A MINIMUM OF 6" (150MM) AT TOP AND 8" (400MM) AT BOTTOM.
 - WALL THICKNESS IS 0.219" (5.5MM) MINIMUM.
 - LUMINAIRE IS ATTACHED TO POLE WITH CLAMP BRACKET.
 - BOLT CIRCLE IS 11" (275MM) - 12" (300MM).
 - RISE OF LUMINAIRE ARM IS 39 1/2" (1.0M).
 - HANDHOLE OPENING IS A MINIMUM OF 4" X 6".



SPlicing ELECTRIC CABLES
BASIC MATERIALS AND METHODS

NAME	DATE
PRE-FINAL SUBMITTAL	05.31.07
FINAL SUBMITTAL	08.31.07

CITY OF NAPERVILLE

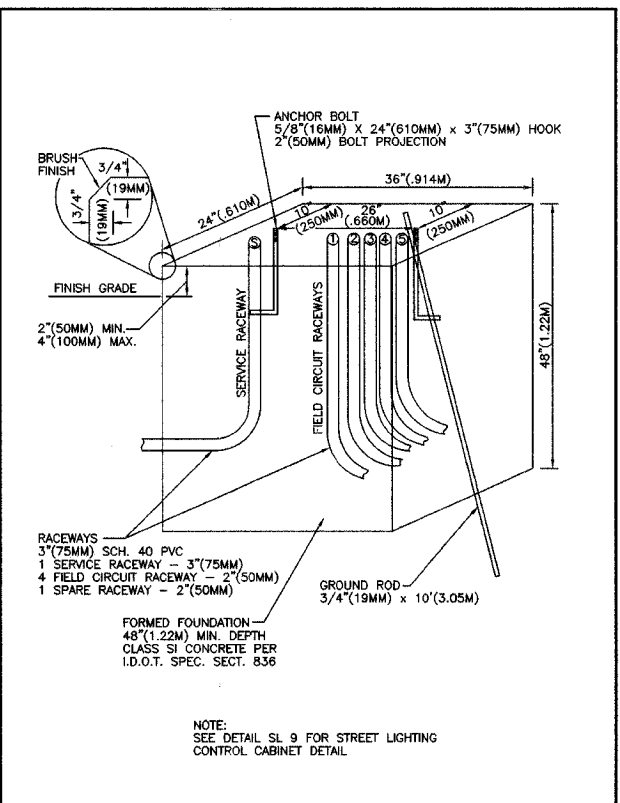
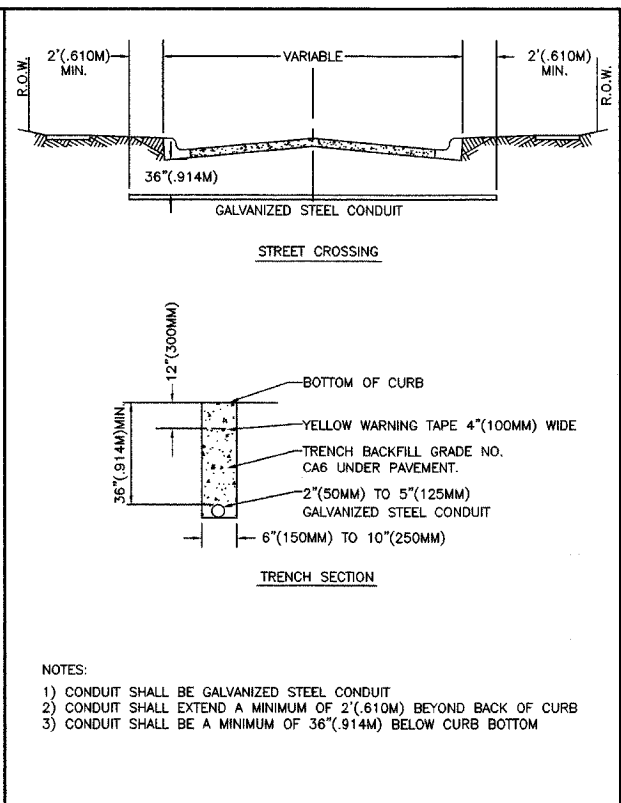
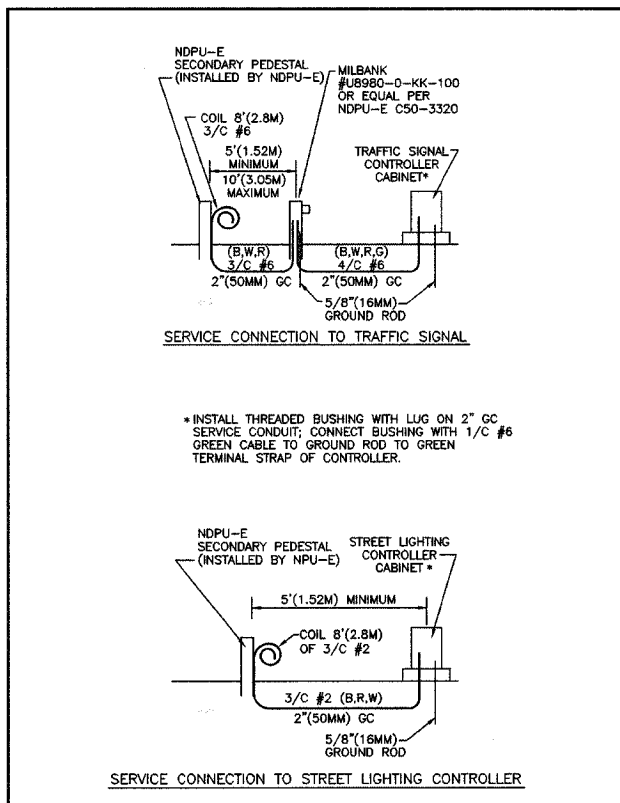
LIGHTING PLAN DETAIL

95TH STREET PARK AND RIDE

DATE: 11/26/2007
 DESIGNED BY: DNM
 TECHNICIAN: SJC
 CHECKED BY: JRV

FILE NO.	SECTION	COUNTY	TOTAL SHEETS	SHEET NO.
*	06-00132-00-PK	WILL	15	10
STA.	..*	TO STA.	*	*
		WORK		

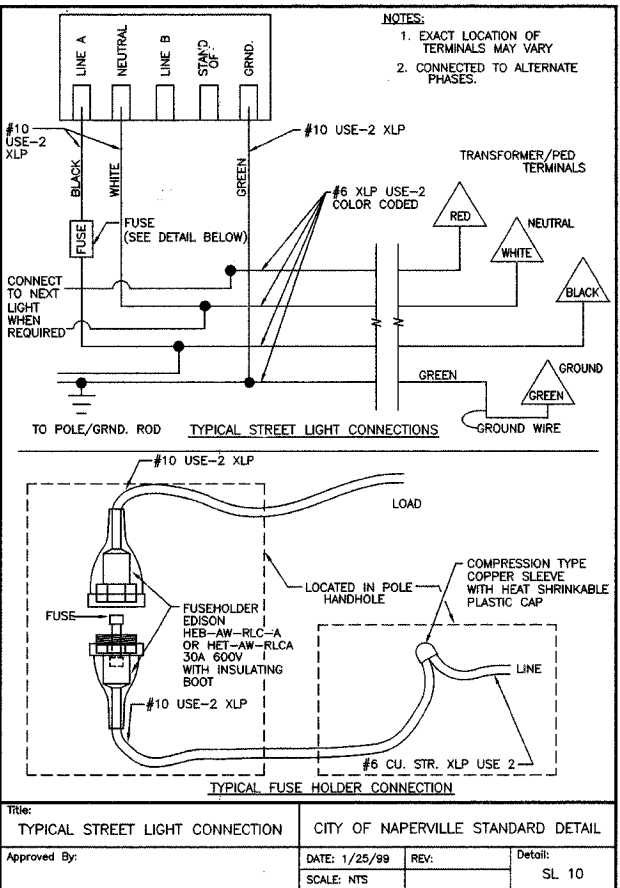
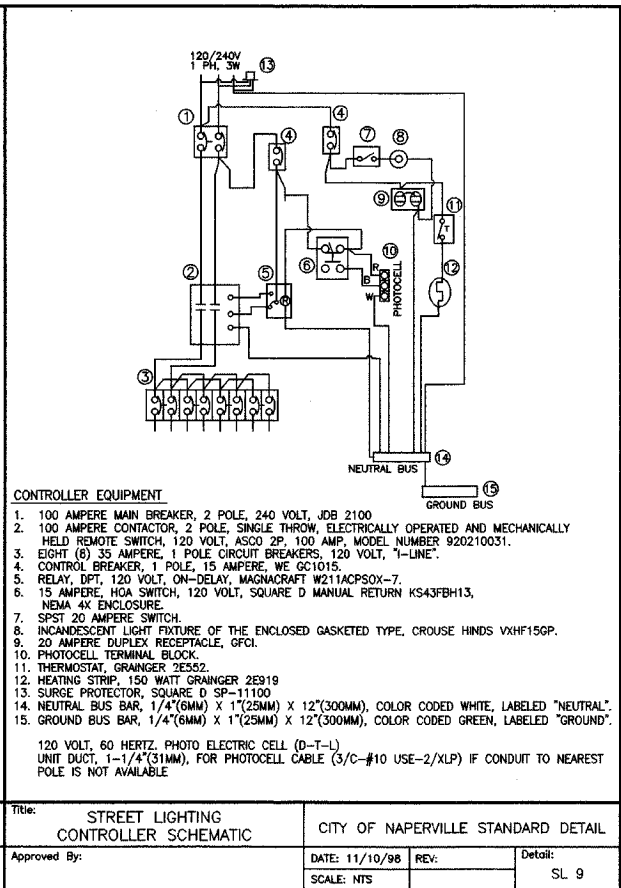
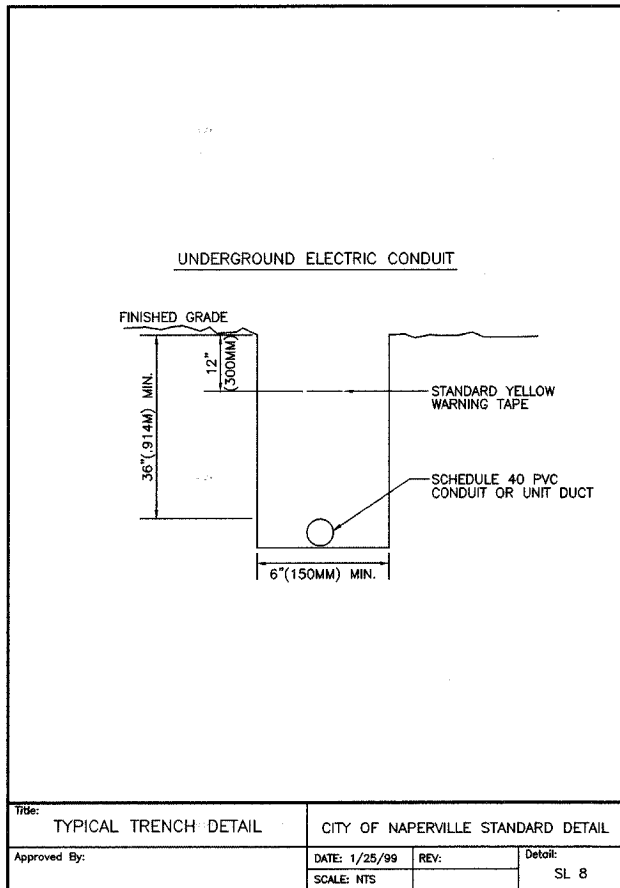
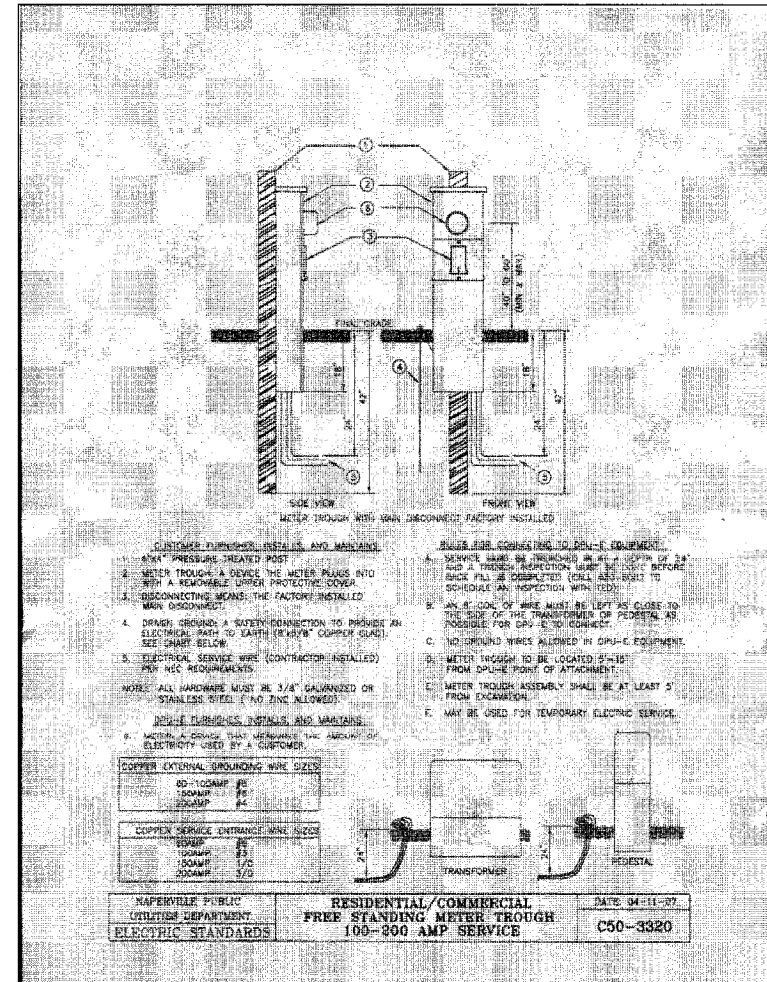
CONTRACT NUMBER 83974



Title: TYPICAL STREET LIGHT CONNECTION	CITY OF NAPERVILLE STANDARD DETAIL
Approved By:	DATE: 5/3/00 REV: Detail: SL 4
SCALE: NTS	

Title: ELECTRIC CONDUIT UNDER PAVEMENT	CITY OF NAPERVILLE STANDARD DETAIL
Approved By:	DATE: 4/19/99 REV: Detail: SL 6
SCALE: NTS	

Title: I.D.O.T. TYPE III STREET LIGHTING CONTROL CABINET FOUNDATION	CITY OF NAPERVILLE STANDARD DETAIL
Approved By:	DATE: 2/22/00 REV: Detail: SL 7
SCALE: NTS	



Title: TYPICAL TRENCH DETAIL	CITY OF NAPERVILLE STANDARD DETAIL
Approved By:	DATE: 1/25/99 REV: Detail: SL 8
SCALE: NTS	

Title: STREET LIGHTING CONTROLLER SCHEMATIC	CITY OF NAPERVILLE STANDARD DETAIL
Approved By:	DATE: 11/10/98 REV: Detail: SL 9
SCALE: NTS	

Title: TYPICAL STREET LIGHT CONNECTION	CITY OF NAPERVILLE STANDARD DETAIL
Approved By:	DATE: 1/25/99 REV: Detail: SL 10
SCALE: NTS	

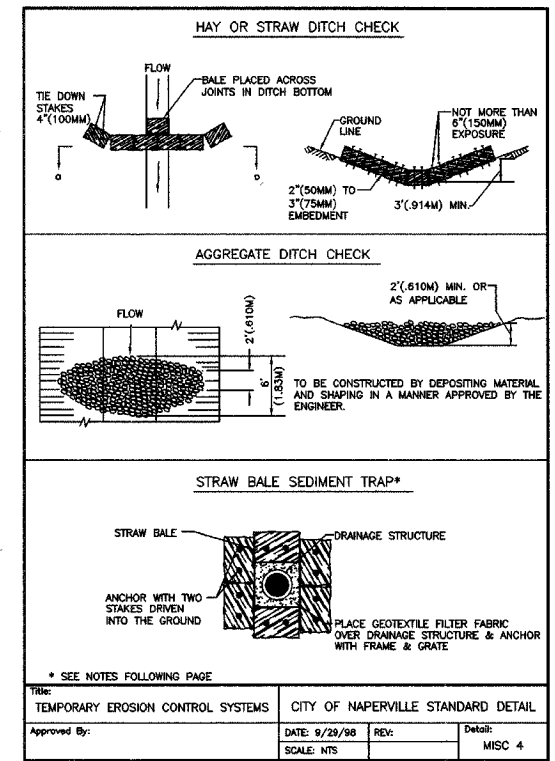
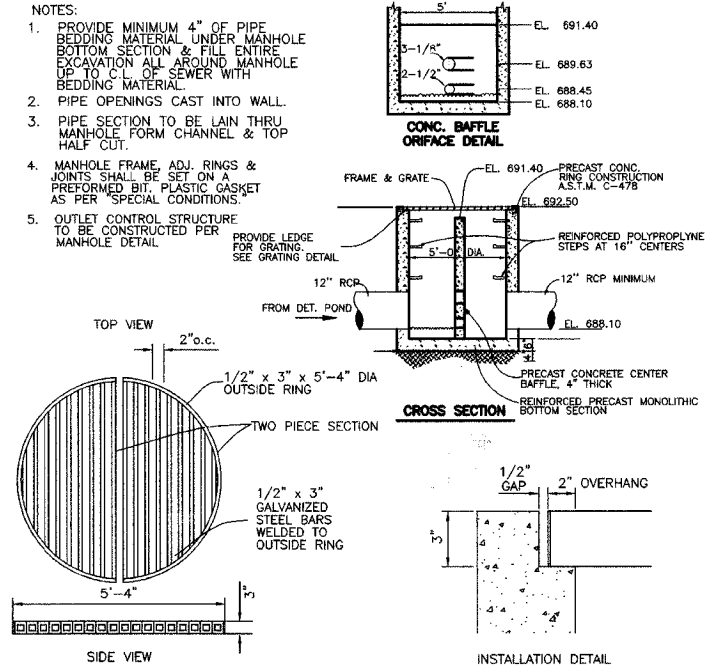
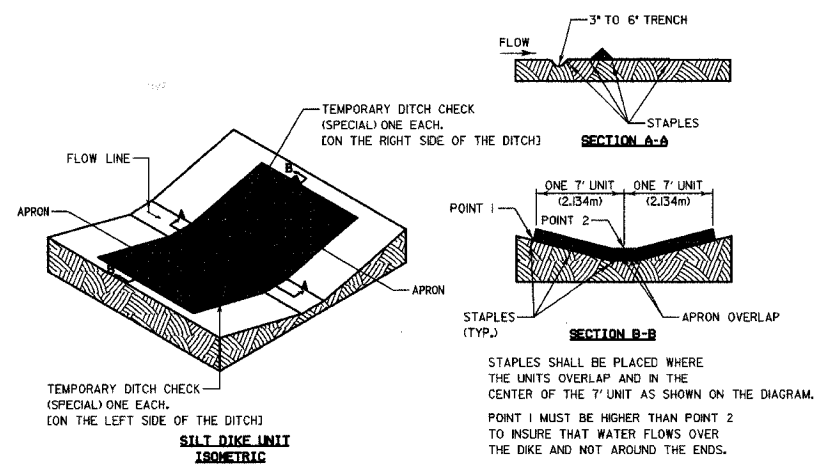
REVISIONS	
NAME	DATE
PRE-FINAL SUBMITTAL	05.31.07
FINAL SUBMITTAL	08.31.07

CITY OF NAPERVILLE
LIGHTING PLAN DETAIL
 95TH STREET PARK AND RIDE

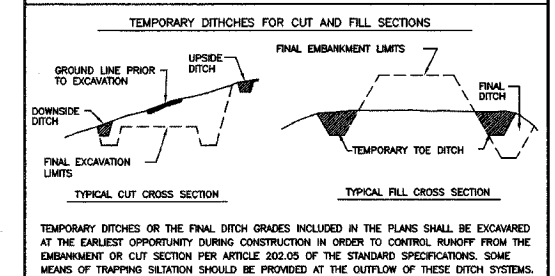
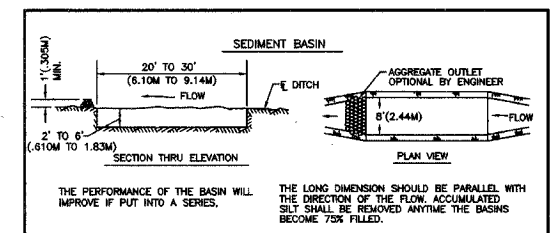
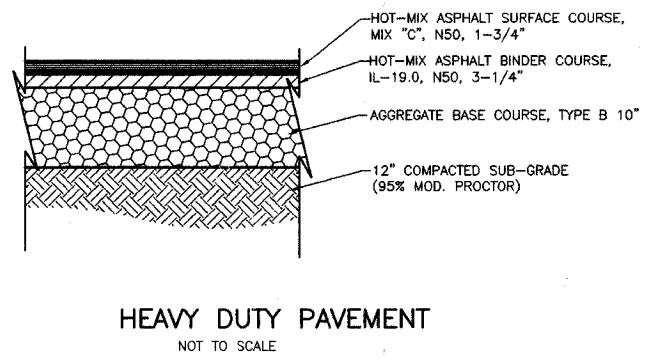
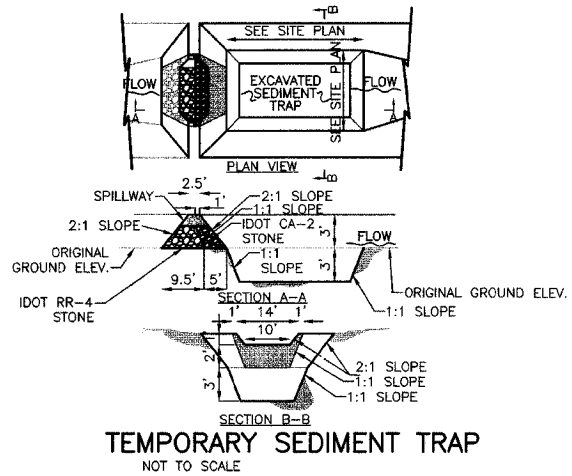
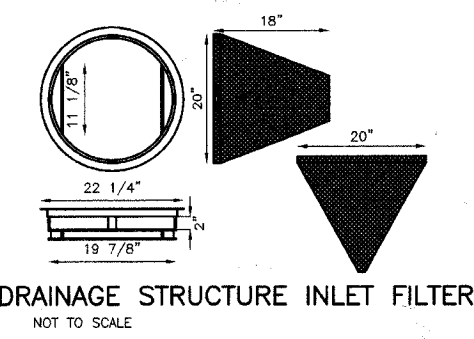
DATE: 11/26/2007
 DESIGNED BY: DNM
 TECHNICIAN: SJC
 CHECKED BY: JRV

P&E	SECTION	COUNTY	TOTAL SHEETS	SHEET NO
*	06-00132-00-PK	WILL	15	11
STA.	TO STA.			

CONTRACT NUMBER 83974

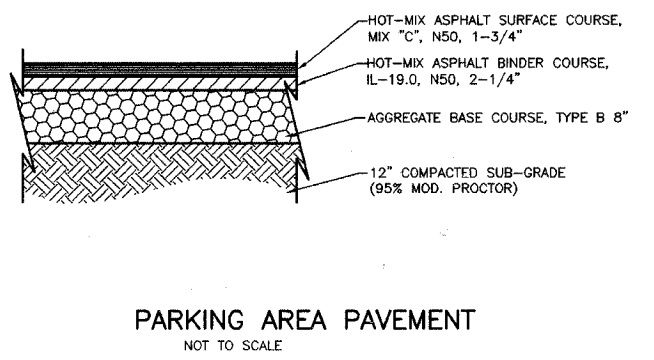
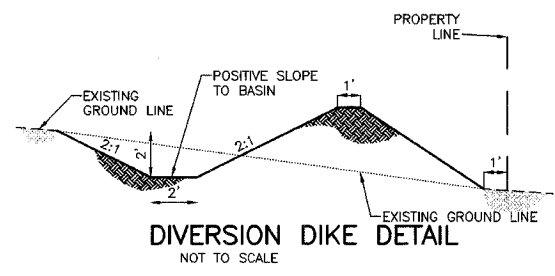
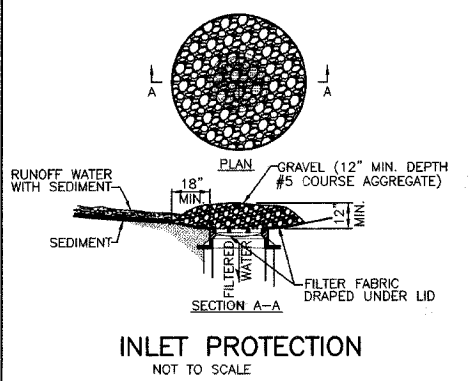


Title:	TEMPORARY EROSION CONTROL SYSTEMS	CITY OF NAPERVILLE STANDARD DETAIL
Approved By:	DATE: 9/25/98	REV: MISC 4
	SCALE: NTS	



NOTES:
 1. ACTUAL CONFIGURATION AND LOCATION OF TEMPORARY EROSION CONTROL SYSTEMS SHALL BE SHOWN ON THE PLANS OR AS DIRECTED BY THE ENGINEER.
 2. DITCH CHECKS AND SEDIMENT BASINS SHOULD BE CONSTRUCTED AT APPROPRIATE INTERVALS ALONG THE WATERWAY TO BE EFFECTIVE.
 3. WHERE MORE THAN ONE ROW OF BALES USED, STAGGER BALES TO COVER JOINTS.
 4. WHERE BALES ARE SHOWN STAKED, A MINIMUM OF TWO PER BALE SHALL BE USED.
 5. THE TEMPORARY EROSION CONTROL SYSTEMS INSTALLED BY THE CONTRACTOR SHALL BE PROPERLY MAINTAINED AS DIRECTED BY THE ENGINEER TO CONTROL SILTATION AT ALL TIMES DURING THE LIFE OF THE CONTRACT.

Title:	TEMPORARY EROSION CONTROL SYSTEMS	CITY OF NAPERVILLE STANDARD DETAIL
Approved By:	DATE: 9/23/98	REV: MISC 5
	SCALE: NTS	



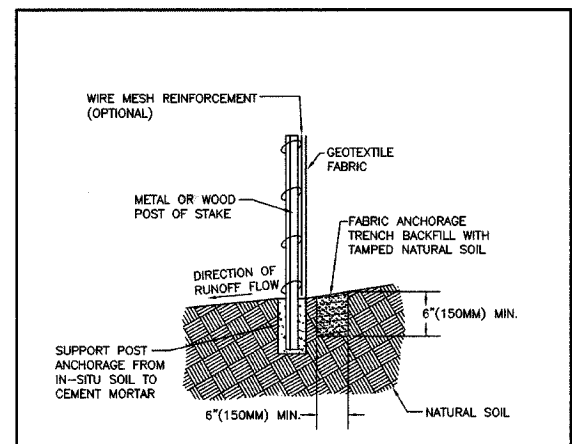
REVISIONS	
NAME	DATE
PRE-FINAL SUBMITTAL	05.31.07
FINAL SUBMITTAL	08.31.07

CITY OF NAPERVILLE
CONSTRUCTION DETAILS
 95TH STREET PARK AND RIDE

DATE: 11/26/2007
 DESIGNED BY: RTM
 TECHNICIAN: JRR
 CHECKED BY: JRV

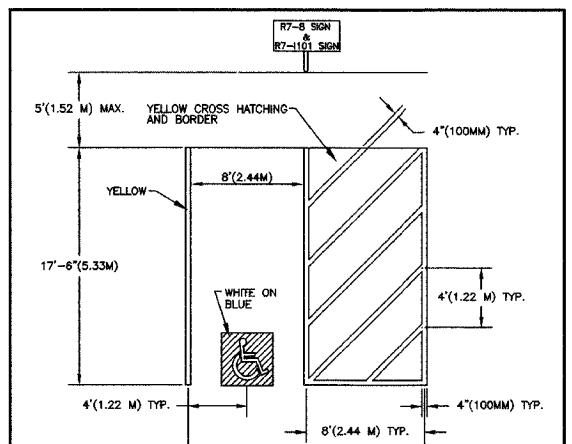
FILE NO.	SECTION	COUNTY	TOTAL SHEETS	SHEET NO.
*	06-00132-00-PK	WILL	15	12
STA.	TO STA.			
	MARK			

CONTRACT NUMBER 83974



NOTE:
DEPENDING UPON THE CONFIGURATION, ATTACH FABRIC TO WIRE MESH WITH HOG RINGS, STEEL POST WITH TIE WIRES, WOOD POST WITH NAILS

Title:	TYPICAL SILT FENCE CONSTRUCTION	CITY OF NAPERVILLE STANDARD DETAIL		
Approved By:		DATE: 9/29/98	REV:	Detail: MISC 6
		SCALE: NTS		



NOTE:
FOR MULTIPLE ACCESSIBLE PARKING SPACES IN A ROW, THE DESIGN ENGINEER HAS THE OPTION OF USING THE ABOVE SHOWN UNIT IN A COMBINATION OF LEFT-HANDED AND RIGHT-HANDED LAYOUTS IF IT PROVIDES FOR BETTER SITE DESIGN. SEE DETAIL MISC. 30 FOR AN EXAMPLE

Title:	Accessible Parking Space Markings	City of Naperville Standard Detail		
Approved By:		DATE: 2/12/02	REV:	Detail: MISC 11
		SCALE: NTS	SHEET 2 OF 4	

NOTES FOR ACCESSIBLE PARKING SPACES:

- EACH PARKING SPACE SHALL BE AT LEAST 8' (2.44M) WIDE WITH A 4' (1.22M) WIDE ACCESS AISLE FOR A TOTAL OF 12' (3.66M).
- ADJACENT ACCESSIBLE PARKING SHALL NOT SHARE A COMMON ACCESS AISLE.
- SPACES SHALL BE VERTICALLY MOUNTED ON A PERMANENT POST OR A WALL AT THE FRONT CENTER BETWEEN THE SPACE AND THE ACCESS AISLE NO MORE THAN 11' (3.35M) HORIZONTALLY FROM THE FRONT OF A PARKING SPACE AND SET A MINIMUM OF 4' (1.22M) FROM THE FINISHED GRADE TO THE BOTTOM OF THE '300 FINE' SIGN.
- ACCESSIBLE PARKING SIGNS SHALL ALSO EXHIBIT THE WORDS '300 FINE'.
- PARKING SPACES DESIGNED FOR PERSONS WITH DISABILITIES AND ACCESSIBLE PASSENGER LOADING ZONES THAT SERVE A PARTICULAR BUILDING SHALL BE LOCATED ON THE SHORTEST POSSIBLE ACCESSIBLE CIRCULATION ROUTE TO AN ACCESSIBLE ENTRANCE OF THE BUILDING.
- IN SEPARATE PARKING STRUCTURES OR LOTS THAT DO NOT SERVE A PARTICULAR BUILDING, PARKING SPACES FOR PERSONS WITH DISABILITIES SHALL BE LOCATED ON THE SHORTEST POSSIBLE CIRCULATION ROUTE TO AN ACCESSIBLE PEDESTRIAN ENTRANCE OF THE PARKING FACILITY.

OF ACCESSIBLE SPACES REQUIRED PER # OF OFF STREET PARKING SPACES REQUIRED
1-10
11-20
21-30
31-40
41-50
51-60
61-70
71-80
81-90
91-100
101-200
201-300
301-400
401-500
501-600
601-700
701-800
801-900
901-1000
1000 PLUS
20 PLUS 1 FOR EACH 100 OVER 1000

RESERVED PARKING

ACCESSIBLE PARKING SIGN (R7-8)

\$100 FINE

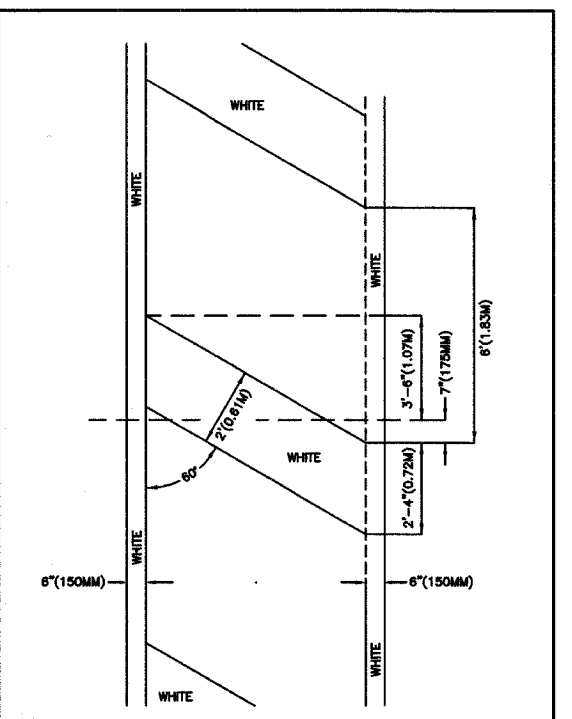
"\$100 FINE" SIGN (R7-1101)

VAN ACCESSIBLE

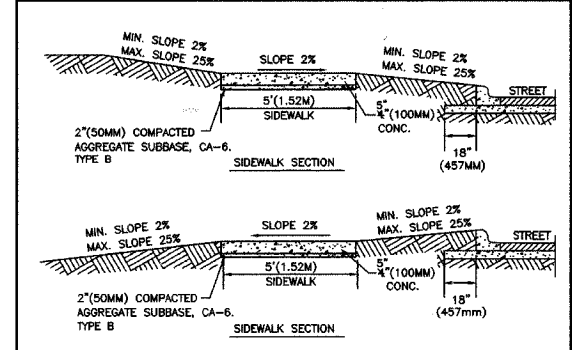
VAN ACCESSIBLE SIGN
18" x 9" (457MM x 229MM)
2" (50MM) SERIES D LETTERS

ACCESSIBLE SYMBOL
LINES SHALL BE WHITE.

Title:	ACCESSIBLE PARKING SPACE MARKINGS	City of Naperville Standard Detail		
Approved By:		DATE: 2/12/02	REV:	Detail: MISC 11
		SCALE: NTS	SHEET 4 OF 4	

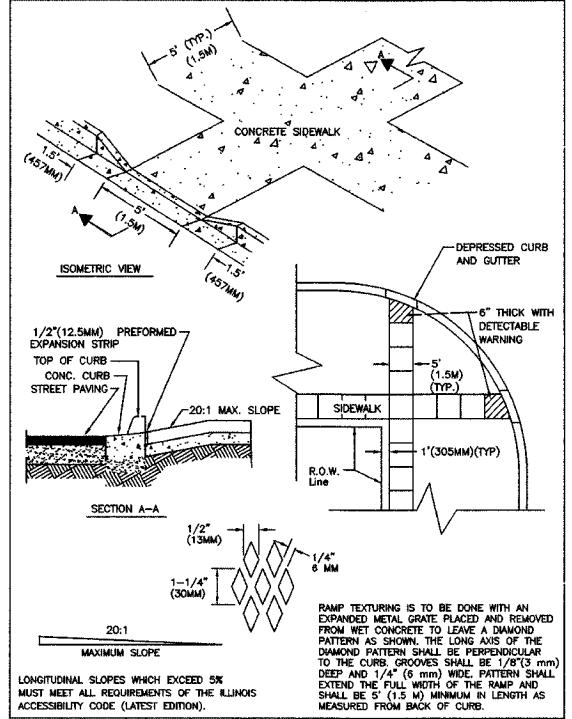


Title:	CROSSWALK	CITY OF NAPERVILLE STANDARD DETAIL		
Approved By:		DATE: 5/4/00	REV:	Detail: MISC 12
		SCALE: NTS		

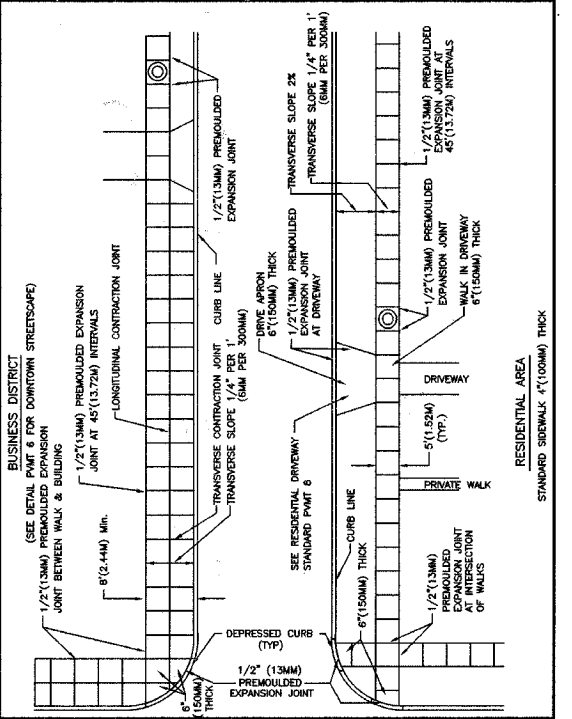


- NOTES:
- CONCRETE SHALL BE IDOT CLASS SI
 - MINIMUM SIDEWALK THICKNESS SHALL BE 4" (100mm)
 - SIDEWALK THICKNESS ACROSS DRIVEWAY SHALL BE AT A MINIMUM 6" (150mm) FOR RESIDENTIAL DRIVEWAYS AND 8" (200mm) FOR COMMERCIAL DRIVEWAYS
 - MAXIMUM LONGITUDINAL SLOPE SHALL NOT EXCEED 5% (20:1). FOR ANY SLOPE IN EXCESS OF 5%, ALL REQUIREMENTS OF THE ILLINOIS ACCESSIBILITY CODE (LATEST EDITION) SHALL BE MET.
 - MINIMUM TRANSVERSE SLOPE SHALL BE 1/4" PER 1' (2%) MAXIMUM TRANSVERSE SLOPE SHALL BE 1/2" PER 1' (4%).
 - A MINIMUM 2" (50mm) AGGREGATE SUBBASE (CA-6) SHALL BE PROVIDED. (4" (100mm) THROUGH COMMERCIAL DRIVEWAYS).
 - AGGREGATE SUBBASE SHALL BE MECHANICALLY COMPACTED.
 - ALL SIDEWALKS SHALL BE PROMPTLY BACKFILLED AND PROTECTED FROM DAMAGE.

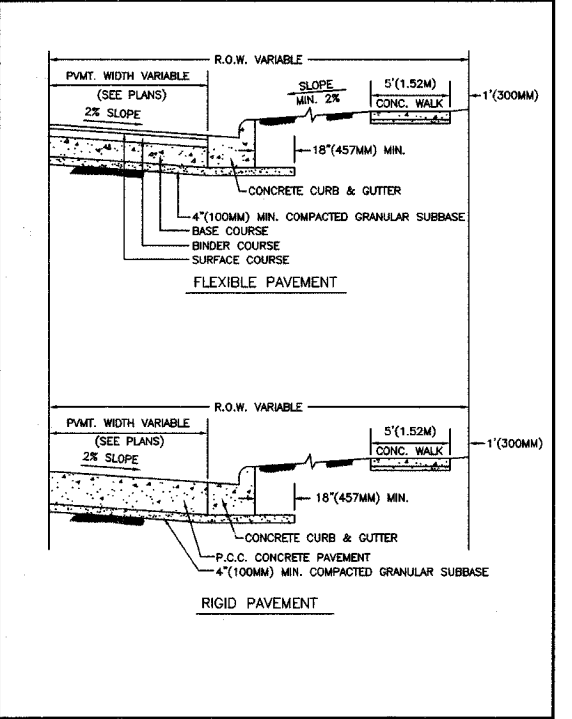
Title:	SIDEWALK	CITY OF NAPERVILLE STANDARD DETAIL		
Approved By:		DATE: 6/8/98	REV:	Detail: PVMT 3
		SCALE: NTS		



Title:	CURB RAMPS ACCESSIBLE TO THE DISABLED	City of Naperville Standard Detail		
Approved By:		DATE: 5/29/98	REV:	Detail: PVMT 4
		SCALE: NTS		



Title:	SIDEWALK CONSTRUCTION	CITY OF NAPERVILLE STANDARD DETAIL		
Approved By:		DATE: 5/29/98	REV:	Detail: PVMT 5
		SCALE: NTS		



Title:	TYPICAL PAVEMENT DETAILS	CITY OF NAPERVILLE STANDARD DETAIL		
Approved By:		DATE: 6/2/98	REV:	Detail: PVMT 7
		SCALE: NTS		

CITY OF NAPERVILLE

CONSTRUCTION DETAILS

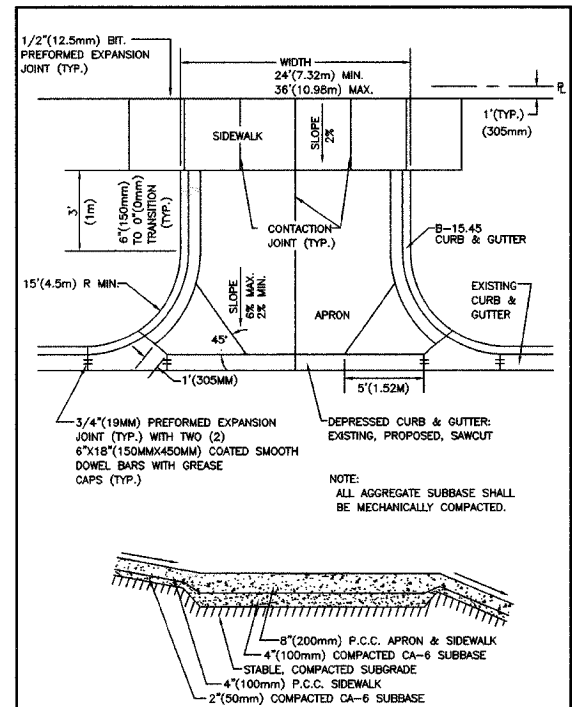
95TH STREET PARK AND RIDE

REVISIONS	
NAME	DATE
PRE-FINAL SUBMITTAL	05.31.07
FINAL SUBMITTAL	08.31.07

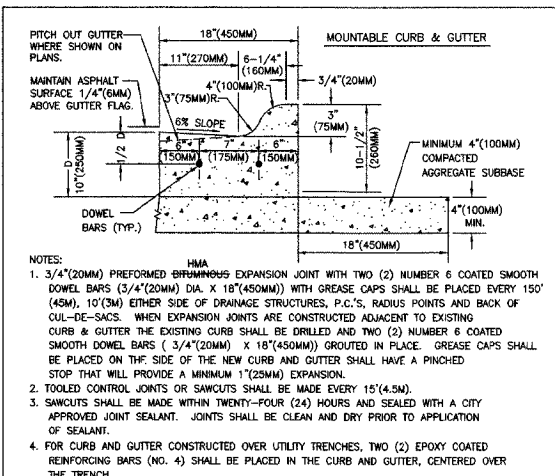
DATE: 11/26/2007
DESIGNED BY: RTM
TECHNICIAN: JRR
CHECKED BY: JRV

FILE NO.	SECTION	COUNTY	TOTAL SHEETS	SHEET NO.
* 06-00132-00-PK	WILL		15	13
STA. .*	TO STA. *			
	BLANK			

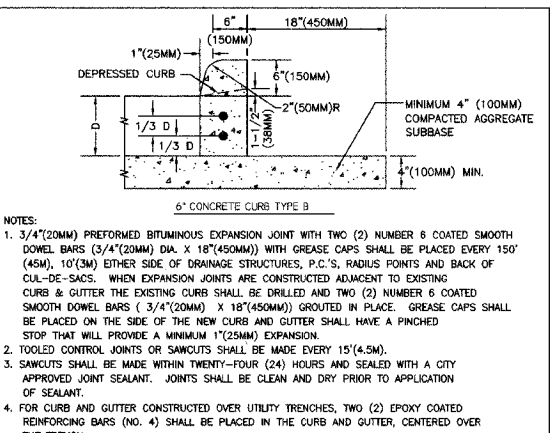
CONTRACT NUMBER 83974



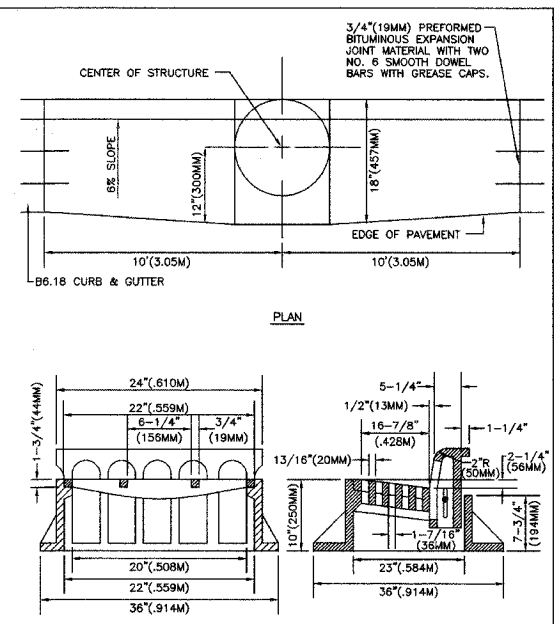
Title: TYPICAL COMMERCIAL DRIVEWAY DETAIL CITY OF NAPERVILLE STANDARD DETAIL
Approved By: DATE: 6/2/98 REV: Detail: PVMT 10
SCALE: NTS



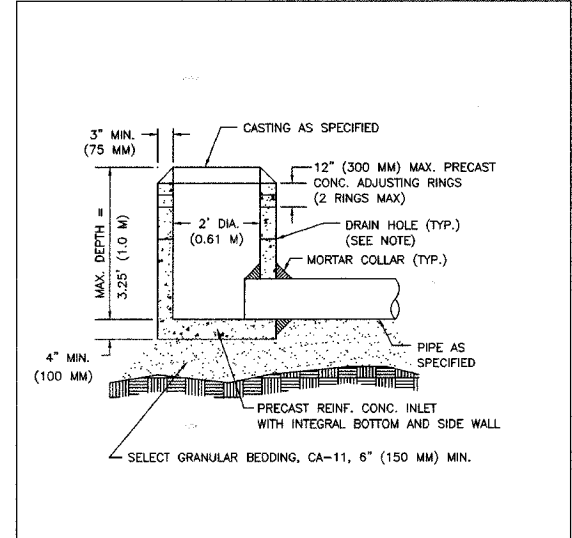
Title: CURB & GUTTER CITY OF NAPERVILLE STANDARD DETAIL
Approved By: DATE: 6/2/98 REV: Detail: PVMT 11
SCALE: NTS



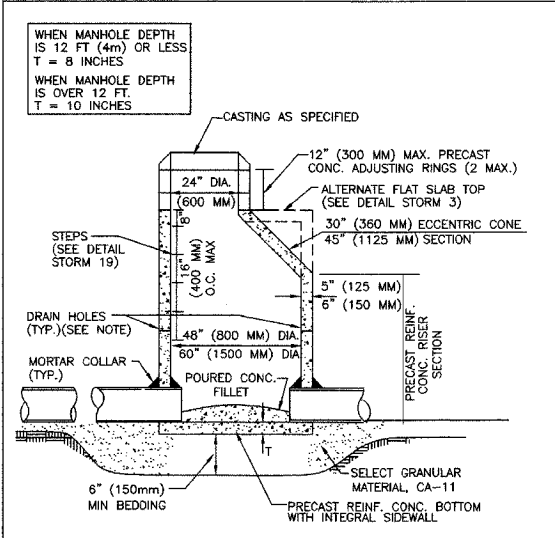
Title: CURB & GUTTER CITY OF NAPERVILLE STANDARD DETAIL
Approved By: DATE: 6/8/98 REV: Detail: PVMT 12
SCALE: NTS



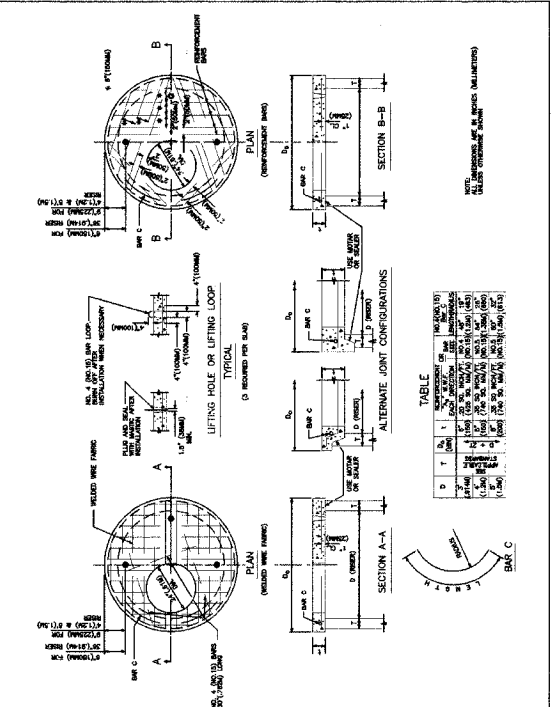
Title: STORM SEWER CASTING DETAIL FOR B6.12 CURB & GUTTER CITY OF NAPERVILLE STANDARD DETAIL
Approved By: DATE: 6/8/98 REV: Detail: PVMT 13
SCALE: NTS



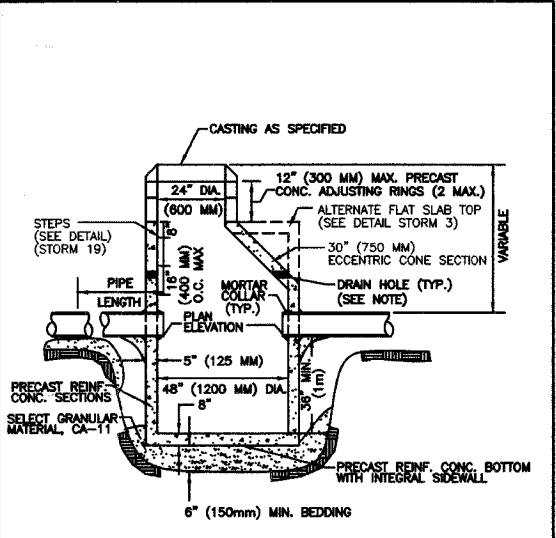
Title: INLET TYPE A CITY OF NAPERVILLE STANDARD DETAIL
Approved By: DATE: 6/12/2001 REV: Detail: STORM 1
SCALE: NTS



Title: MANHOLE TYPE A CITY OF NAPERVILLE STANDARD DETAIL
Approved By: DATE: 6/12/2001 REV: Detail: STORM 2
SCALE: NTS



Title: FLAT SLAB TOP PRECAST REINFORCED CONCRETE CITY OF NAPERVILLE STANDARD DETAIL
Approved By: DATE: 3/11/98 REV: Detail: STORM 3
SCALE: NTS



Title: CATCHBASIN TYPE A CITY OF NAPERVILLE STANDARD DETAIL
Approved By: DATE: 6/12/2001 REV: Detail: STORM 4
SCALE: NTS

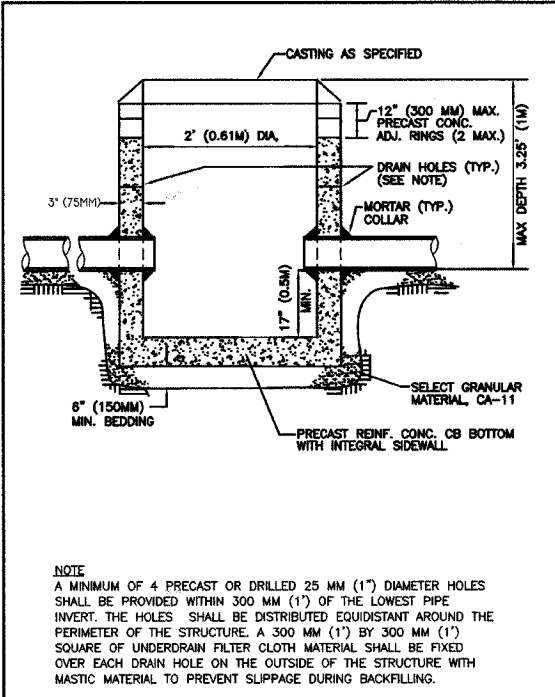
REVISIONS	
NAME	DATE
PRE-FINAL SUBMITTAL	05.31.07
FINAL SUBMITTAL	08.31.07

CITY OF NAPERVILLE
CONSTRUCTION DETAILS
95TH STREET PARK AND RIDE

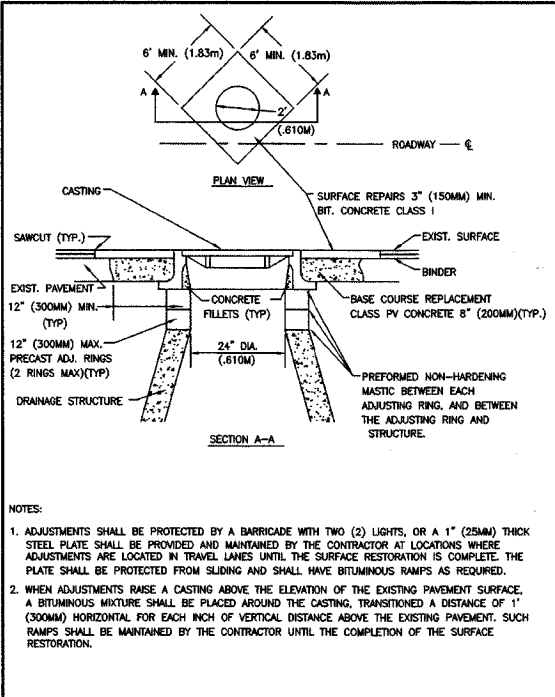
DATE: 11/26/2007
DESIGNED BY: RTM
TECHNICIAN: JRR
CHECKED BY: JRJ

PANEL	SECTION	COUNTY	TOTAL SHEETS	SHEET NO
*	06-00132-00-PK	WILL	15	14
STA.	..*	TO STA.	*	*

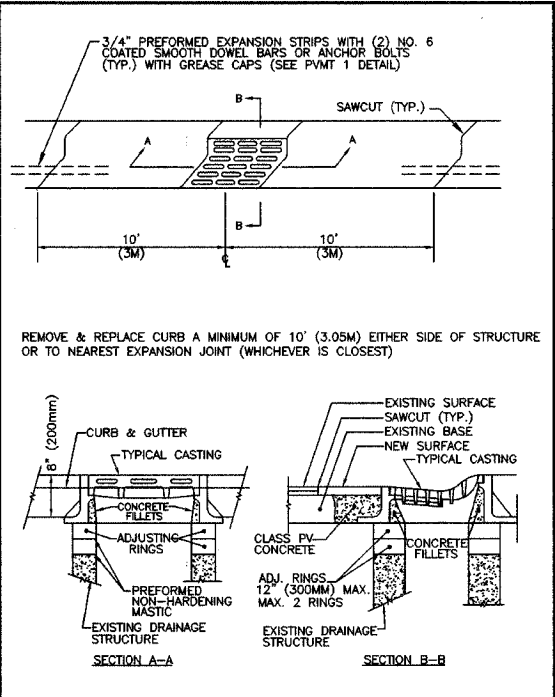
CONTRACT NUMBER 83974



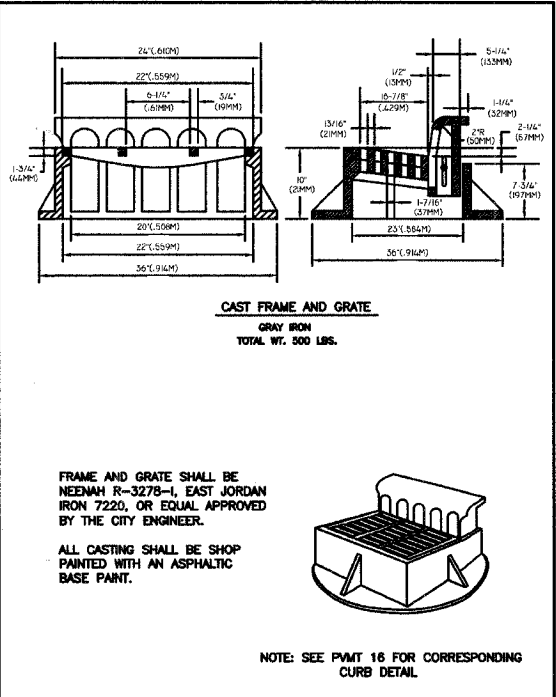
Title: CATCHBASIN TYPE C
City: CITY OF NAPERVILLE STANDARD DETAIL
Approved By: _____ **DATE:** 8/12/2001 **REV:** _____ **Detail:** STORM 5
SCALE: NTS



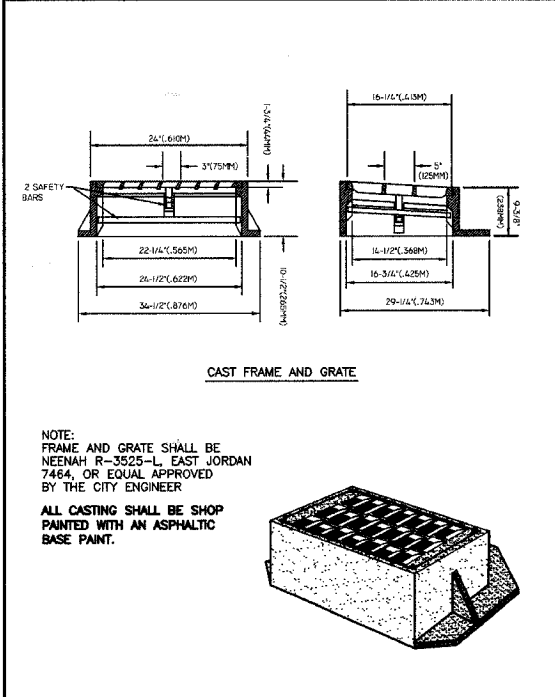
Title: CASTING ADJUSTMENTS FOR STRUCTURES IN PAVED AREAS
City: CITY OF NAPERVILLE STANDARD DETAIL
Approved By: _____ **DATE:** 2/24/98 **REV:** _____ **Detail:** STORM 6
SCALE: NTS



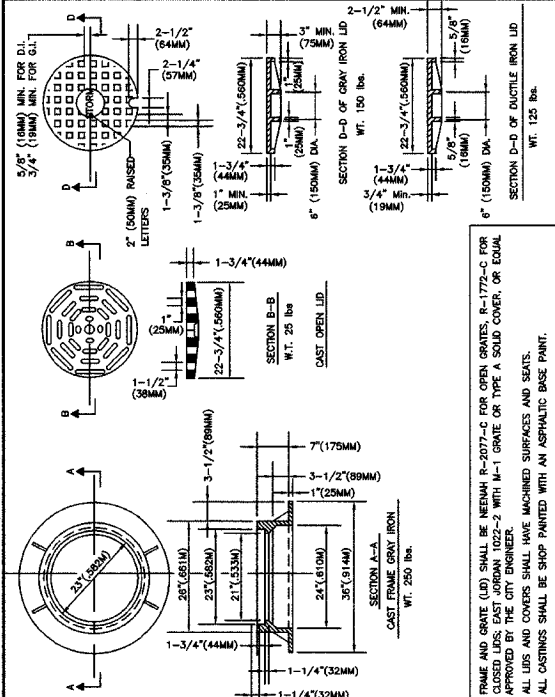
Title: CASTING ADJUSTMENTS FOR STRUCTURES WITHIN THE CURB LINE
City: CITY OF NAPERVILLE STANDARD DETAIL
Approved By: _____ **DATE:** 2/24/98 **REV:** _____ **Detail:** STORM 7
SCALE: NTS



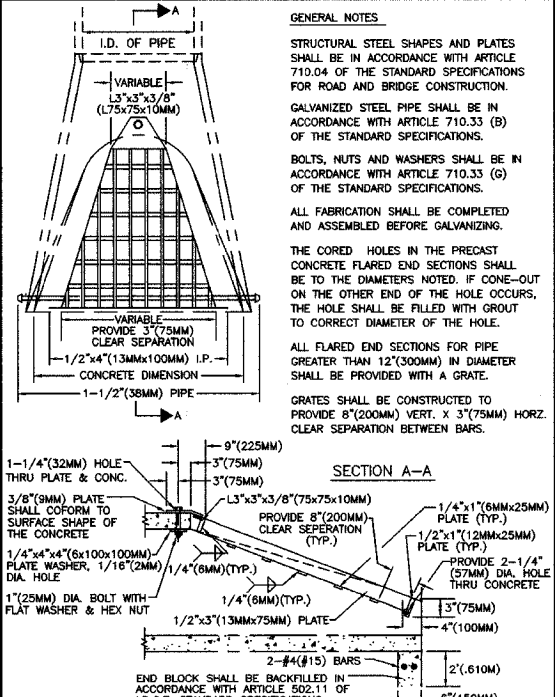
Title: STANDARD FRAME AND GRATE FOR (B6-12) CURB AND GUTTER
City: CITY OF NAPERVILLE STANDARD DETAIL
Approved By: _____ **DATE:** 9/15/99 **REV:** _____ **Detail:** STORM 12
SCALE: NTS



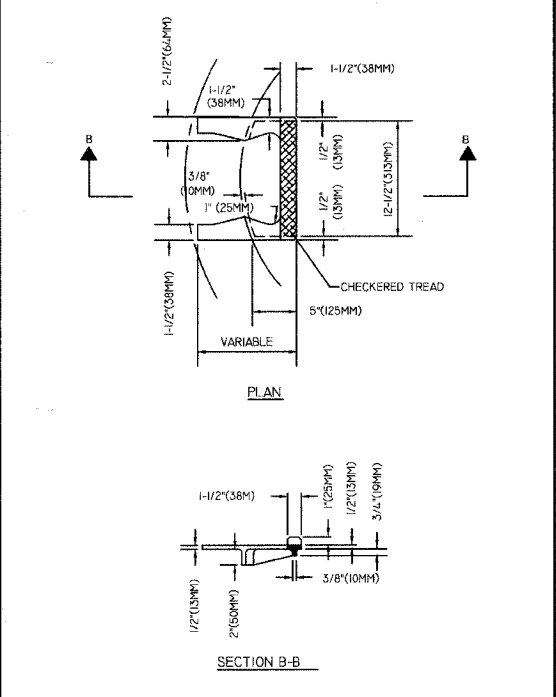
Title: FRAME & GRATE FOR B-6.12 (B-15.30) CURB & GUTTER (DEPRESSED CURB)
City: CITY OF NAPERVILLE STANDARD DETAIL
Approved By: _____ **DATE:** 9/15/99 **REV:** _____ **Detail:** STORM 13
SCALE: NTS



Title: FRAME & LID TYPE 1
City: CITY OF NAPERVILLE STANDARD DETAIL
Approved By: _____ **DATE:** 9/15/99 **REV:** _____ **Detail:** STORM 15
SCALE: NTS



Title: GRATING FOR CONCRETE FLARED END SECTION
City: CITY OF NAPERVILLE STANDARD DETAIL
Approved By: _____ **DATE:** 3/17/98 **REV:** _____ **Detail:** STORM 17
SCALE: NTS



Title: CAST IRON STEPS
City: CITY OF NAPERVILLE STANDARD DETAIL
Approved By: _____ **DATE:** 3/11/98 **REV:** _____ **Detail:** STORM 18
SCALE: NTS

CITY OF NAPERVILLE

CONSTRUCTION DETAILS

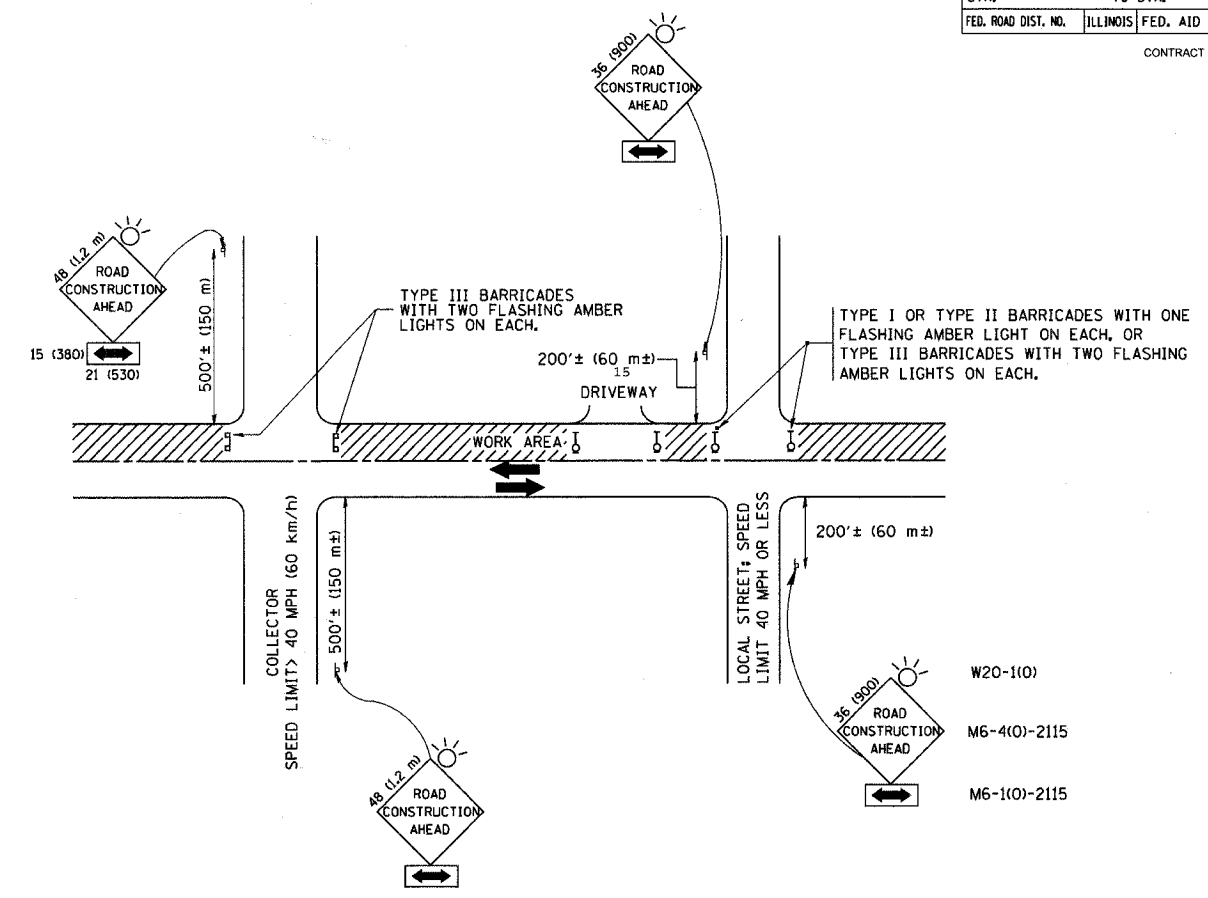
95TH STREET PARK AND RIDE

REVISIONS	
NAME	DATE
PRE-FINAL SUBMITTAL	05.31.07
FINAL SUBMITTAL	08.31.07

DATE: 11/26/2007
DESIGNED BY: RTM
TECHNICIAN: JRR
CHECKED BY: JRV

CONTRACT NO.				
F.A. RTE.	SECTION	COUNTY	TOTAL SHEETS	SHEET NO.
*	06-00132-00-PK	WILL	15	15
STA. *		TO STA. *		
FED. ROAD DIST. NO.	ILLINOIS	FED. AID PROJECT		

CONTRACT NUMBER 83874



TRAFFIC CONTROL AND PROTECTION FOR SIDE ROADS, INTERSECTIONS, AND DRIVEWAYS

NOTES:

- A. FOR NO LANE RESTRICTION ON THE SIDE ROAD OR DRIVEWAYS
- SIDE ROAD WITH A SPEED LIMIT OF 40 MPH (60 km/h) OR LESS AS SHOWN ON THE DRAWING AND AS DIRECTED BY THE ENGINEER:
 - ONE ROAD CONSTRUCTION AHEAD SIGN 36 x 36 (900x900) WITH A FLASHER AND FLAG MOUNTED ON IT APPROXIMATELY 200' (60 m) IN ADVANCE OF THE MAIN ROUTE.
 - THE CLOSED PORTION OF THE MAIN ROUTE SHALL BE PROTECTED BY BLOCKING WITH TYPE I, TYPE II OR TYPE III BARRICADES, 1/3 OF THE CROSS SECTION OF THE CLOSED PORTION.
 - SIDE ROAD WITH A SPEED LIMIT GREATER THAN 60 km/h (40 MPH) AS SHOWN ON THE DRAWING AND AS DIRECTED BY THE ENGINEER:
 - ONE ROAD CONSTRUCTION AHEAD SIGN 48 x 48 (1.2 m x 1.2 m) WITH A FLASHER MOUNTED ON IT APPROXIMATELY 500' (150 m) IN ADVANCE OF THE MAIN ROUTE.
 - THE CLOSED PORTION OF THE MAIN ROUTE SHALL BE PROTECTED BY BLOCKING WITH TYPE III BARRICADES, 1/2 OF THE CROSS SECTION OF THE CLOSED PORTION.
3. WHEN THE SIDE ROAD LIES BETWEEN THE BEGINNING OF THE MAINLINE SIGNING AND THE WORK ZONE, A SINGLE HEADED ARROW (M6-1) SHALL BE USED IN LIEU OF THE DOUBLE HEADED ARROW (M6-4).
- B. FOR A LANE CLOSURE ON A SIDE ROAD OR DRIVEWAY:
- USE APPLICABLE PORTIONS OF THE TYPICAL APPLICATION OF TRAFFIC CONTROL DEVICES (STD. 701501, STD. 701606 OR THE APPROPRIATE STANDARD). THE SPACING OF SIGNS AND BARRICADES SHALL BE ADJUSTED FOR FIELD CONDITIONS AS DIRECTED BY THE ENGINEER. THE DIRECTIONAL ARROW SHALL BE COVERED OR REMOVED WHEN NO LONGER CONSISTENT WITH THE SIDE ROAD LANE CLOSURE.
- C. ADVANCE WARNING SIGNS ARE TO BE OMITTED ON DRIVEWAY UNLESS OTHERWISE NOTED.
- D. THE TRAFFIC CONTROL AND PROTECTION FOR SIDE ROADS, INTERSECTIONS, AND DRIVEWAYS SHALL BE INCIDENTAL TO THE COST OF SPECIFIED TRAFFIC CONTROL STANDARDS OR ITEMS.

All dimensions are in millimeters (inches) unless otherwise shown.

REVISIONS	
NAME	DATE
LHA	6/89
T. RAMMACHER	09/08/94
J. OBERLE	10/18/95
A. HOUSEH	03/06/96
A. HOUSEH	10/15/96
T. RAMMACHER	01/06/00

ILLINOIS DEPARTMENT OF TRANSPORTATION
 TRAFFIC CONTROL AND PROTECTION
 FOR
 SIDE ROADS, INTERSECTIONS, AND
 DRIVEWAYS

SCALE: DATE: 1/17/2007

DRAWN BY
 CHECKED BY
 TC-10
 REVISION DATE: 01/06/00

PLOT DATE = 1/17/2007
 PLOT SCALE = 1/8" = 1'-0"
 PLOT USER = jh
 USER NAME = jh