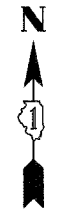
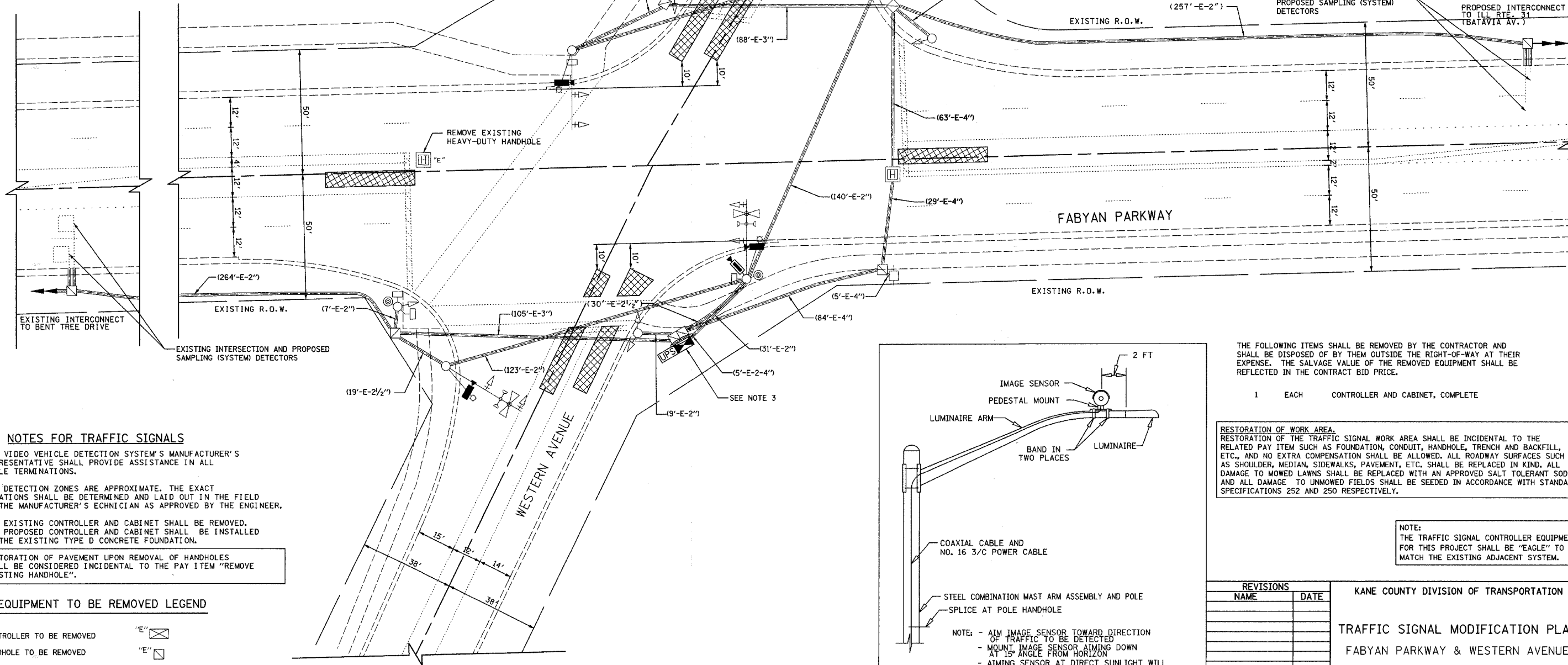


F.A.U. RTE.	SECTION	COUNTY	TOTAL SHEETS	SHEET NO.
363	06-00339-00-TL	KANE	33	3
STA.		TO STA.		
FED. ROAD DIST. NO. 7		ILLINOIS FED. AID PROJECT		



TRAFFIC SIGNAL LEGEND

EXISTING		PROPOSED		EXISTING		PROPOSED	
CONTROLLER			EMERGENCY VEHICLE SYSTEM DETECTOR			CONFIRMATION BEACON	
SERVICE INSTALLATION			SIGNAL HEAD PROGRAMMED			CONDUIT SPLICE	
SIGNAL HEAD			WOOD POLE			RACEWAY FOR MAGNETIC DETECTOR, TYPE I OR TYPE II	
SIGNAL HEAD WITH BACKPLATE			VEHICLE DETECTOR, NON COMPENSATED MAGNETIC TYPE			RAILROAD CONTROLLER	
SIGNAL HEAD, PEDESTRIAN			ILLUMINATED SIGN, FIBER OPTIC "NO LEFT TURN"			ILLUMINATED SIGN, FIBER OPTIC "NO RIGHT TURN"	
SIGNAL POST			TELEPHONE CONNECTION			UNINTERRUPTIBLE POWER SUPPLY	
MAST ARM ASSEMBLY AND POLE, STEEL			VIDEO DETECTION CAMERA			PTZ CAMERA	
MAST ARM ASSEMBLY AND POLE, ALUMINUM			PROPOSED DETECTION ZONE			EXISTING EQUIPMENT TO BE RELOCATED	
COMBINATION MAST ARM ASSEMBLY AND POLE, STEEL							
COMMON TRENCH	CT	CT					
UNIT DUCT	UD	UD					
HANDHOLE							
HEAVY-DUTY HANDHOLE							
DOUBLE HANDHOLE							
G.S. CONDUIT IN TRENCH OR PUSHED							
PEDESTRIAN PUSH-BUTTON DETECTOR							
DETECTOR LOOP							
CAST IRON JUNCTION BOX							

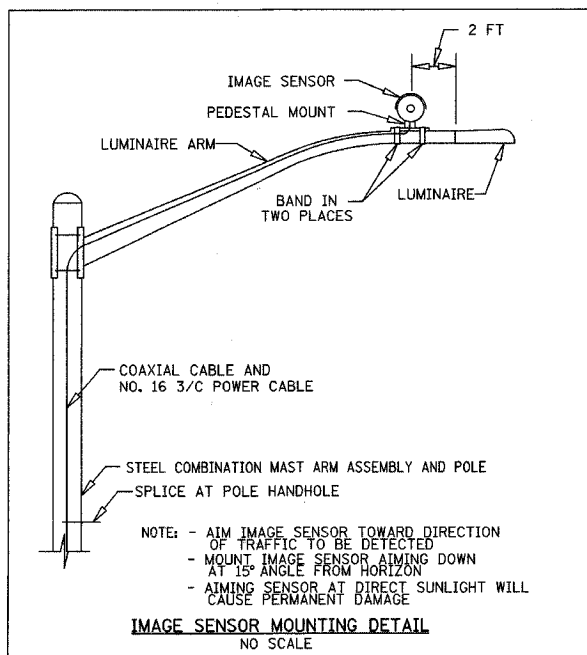


NOTES FOR TRAFFIC SIGNALS

1. THE VIDEO VEHICLE DETECTION SYSTEM'S MANUFACTURER'S REPRESENTATIVE SHALL PROVIDE ASSISTANCE IN ALL CABLE TERMINATIONS.
2. ALL DETECTION ZONES ARE APPROXIMATE. THE EXACT LOCATIONS SHALL BE DETERMINED AND LAID OUT IN THE FIELD BY THE MANUFACTURER'S ECHNICIAN AS APPROVED BY THE ENGINEER.
3. THE EXISTING CONTROLLER AND CABINET SHALL BE REMOVED. THE PROPOSED CONTROLLER AND CABINET SHALL BE INSTALLED ON THE EXISTING TYPE D CONCRETE FOUNDATION.
4. RESTORATION OF PAVEMENT UPON REMOVAL OF HANDHOLES SHALL BE CONSIDERED INCIDENTAL TO THE PAY ITEM "REMOVE EXISTING HANDHOLE".

EXISTING EQUIPMENT TO BE REMOVED LEGEND

EXISTING CONTROLLER TO BE REMOVED	
EXISTING HANDHOLE TO BE REMOVED	
EXISTING HEAVY-DUTY HANDHOLE TO BE REMOVED	



THE FOLLOWING ITEMS SHALL BE REMOVED BY THE CONTRACTOR AND SHALL BE DISPOSED OF BY THEM OUTSIDE THE RIGHT-OF-WAY AT THEIR EXPENSE. THE SALVAGE VALUE OF THE REMOVED EQUIPMENT SHALL BE REFLECTED IN THE CONTRACT BID PRICE.

- 1 EACH CONTROLLER AND CABINET, COMPLETE

RESTORATION OF WORK AREA.
 RESTORATION OF THE TRAFFIC SIGNAL WORK AREA SHALL BE INCIDENTAL TO THE RELATED PAY ITEM SUCH AS FOUNDATION, CONDUIT, HANDHOLE, TRENCH AND BACKFILL, ETC., AND NO EXTRA COMPENSATION SHALL BE ALLOWED. ALL ROADWAY SURFACES SUCH AS SHOULDER, MEDIAN, SIDEWALKS, PAVEMENT, ETC. SHALL BE REPLACED IN KIND. ALL DAMAGE TO MOWED LAWNS SHALL BE REPLACED WITH AN APPROVED SALT TOLERANT SOD, AND ALL DAMAGE TO UNMOWED FIELDS SHALL BE SEEDED IN ACCORDANCE WITH STANDARD SPECIFICATIONS 252 AND 250 RESPECTIVELY.

NOTE:
 THE TRAFFIC SIGNAL CONTROLLER EQUIPMENT FOR THIS PROJECT SHALL BE "EAGLE" TO MATCH THE EXISTING ADJACENT SYSTEM.

REVISIONS		NAME	DATE
NO.	DESCRIPTION		

KANE COUNTY DIVISION OF TRANSPORTATION

TRAFFIC SIGNAL MODIFICATION PLAN
 FABYAN PARKWAY & WESTERN AVENUE

SCALE: 1" = 20'
 DATE: 12/14/2007

DRAWN BY: CEC
 DESIGNED BY: BRD/JSH
 CHECKED BY: JJE