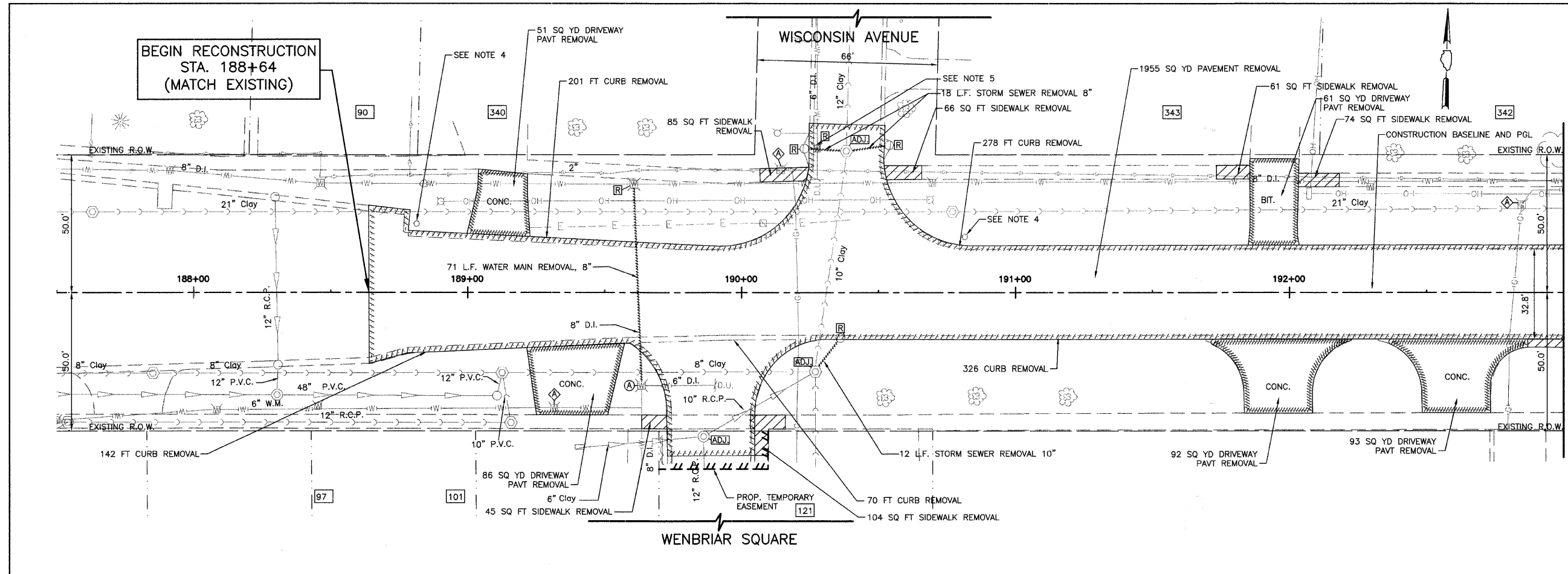


FILE NO.	SECTION	COUNTY	TOTAL SHEETS	SHEET NO.
1380	00-0084-00-PV	DUPAGE	93	15
STA. 188+64	TO STA. 193+00			
ILLINOIS		SURFACE TRANSPORTATION FUNDING		
CONTRACT NUMBER 83993				

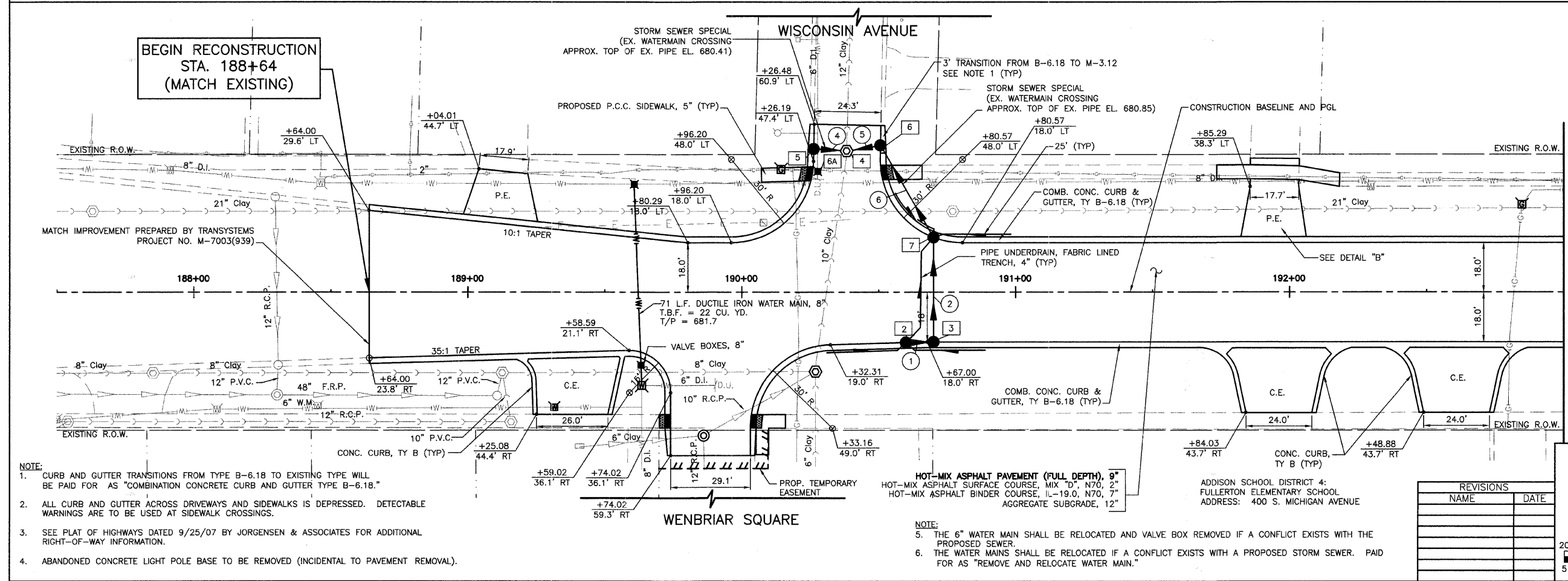
LEGEND

	REMOVAL
	TREE REMOVAL AND SIZE
	DEPRESSED CURB & DETECTABLE WARNINGS
	COMBINED OR SANITARY SEWER STRUCTURE
	COMBINED OR SANITARY SEWER
	VALVE VAULT
	VALVE BOX
	DESTINATION UNKNOWN
	PRIVATE ENTRANCE
	COMMERCIAL ENTRANCE
	STRUCTURE TO BE ADJUSTED
	STRUCTURE TO BE REMOVED
	FRAME AND GRATE TO BE ADJUSTED
	DOMESTIC SERVICE BOX TO BE ADJUSTED
	VALVE VAULT TO BE ADJUSTED
	ITEM TO BE MOVED
	ITEM TO BE RELOCATED
	STREET ADDRESS

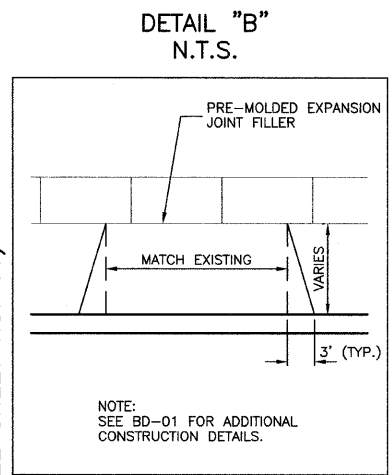


MATCH LINE STA. 193+00
(SEE SHEET NO. 16)

FULLERTON AVENUE
EXISTING TOPOGRAPHY



MATCH LINE STA. 193+00
(SEE SHEET NO. 16)



FULLERTON AVENUE
PROPOSED IMPROVEMENTS

VILLAGE OF ADDISON
ROADWAY PLAN
FULLERTON AVENUE
STA. 188+64 TO 193+00

- NOTE:**
- CURB AND GUTTER TRANSITIONS FROM TYPE B-6.18 TO EXISTING TYPE WILL BE PAID FOR AS "COMBINATION CONCRETE CURB AND GUTTER TYPE B-6.18."
 - ALL CURB AND GUTTER ACROSS DRIVEWAYS AND SIDEWALKS IS DEPRESSED. DETECTABLE WARNINGS ARE TO BE USED AT SIDEWALK CROSSINGS.
 - SEE PLAT OF HIGHWAYS DATED 9/25/07 BY JORGENSEN & ASSOCIATES FOR ADDITIONAL RIGHT-OF-WAY INFORMATION.
 - ABANDONED CONCRETE LIGHT POLE BASE TO BE REMOVED (INCIDENTAL TO PAVEMENT REMOVAL).

- NOTE:**
- THE 6" WATER MAIN SHALL BE RELOCATED AND VALVE BOX REMOVED IF A CONFLICT EXISTS WITH THE PROPOSED SEWER.
 - THE WATER MAINS SHALL BE RELOCATED IF A CONFLICT EXISTS WITH A PROPOSED STORM SEWER. PAID FOR AS "REMOVE AND RELOCATE WATER MAIN."

REVISIONS	
NAME	DATE

20 0 20 HORIZ.
5 5 VERT.
SCALE IN FEET

DATE: 11/26/2007
DESIGNED BY: RTM
TECHNICIAN: JRR
CHECKED BY: JRV