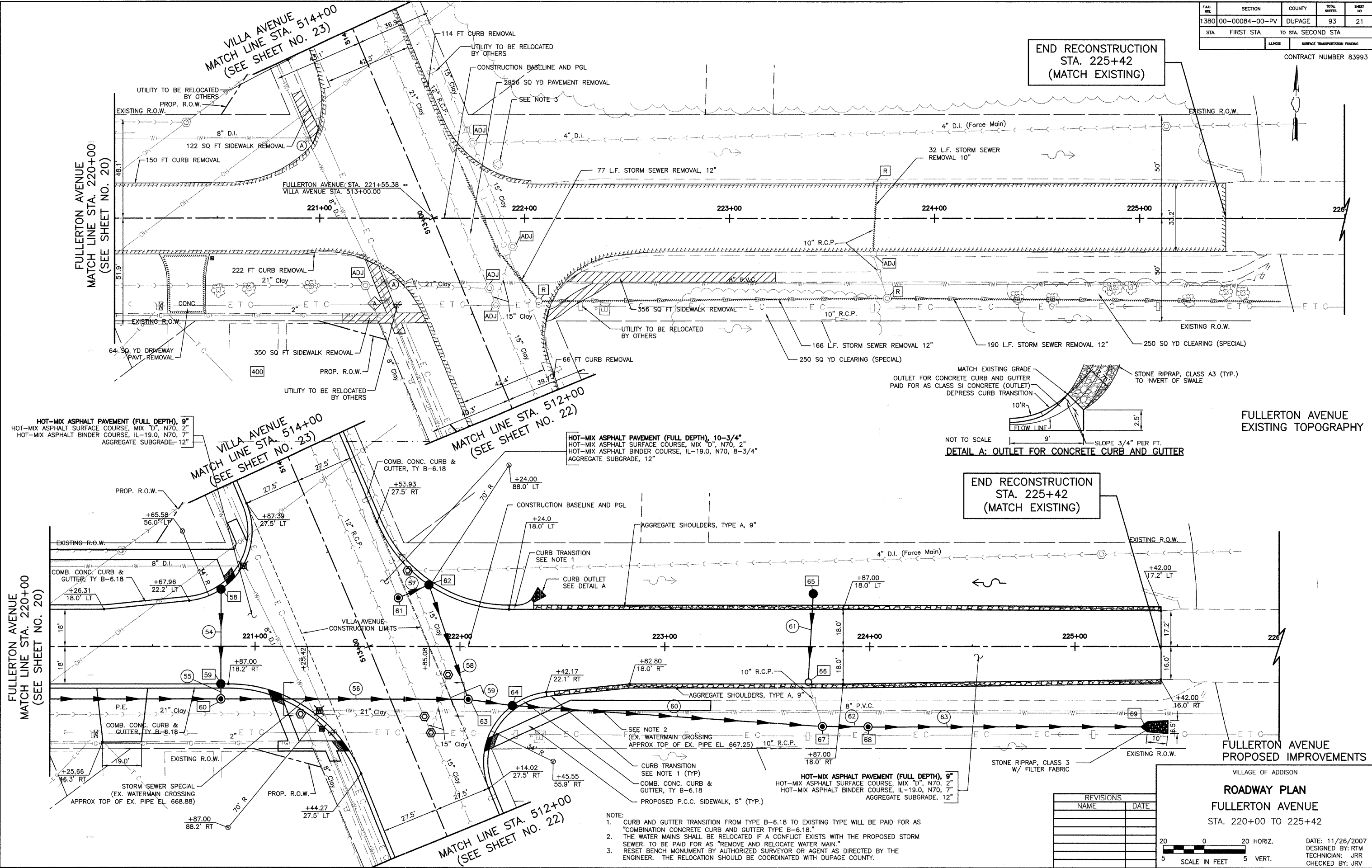


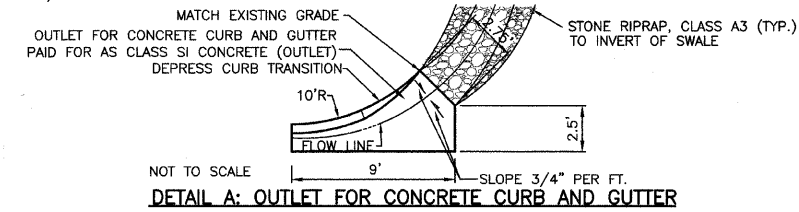
SECTION	COUNTY	TOTAL SHEETS	SHEET NO.
00-00084-00-PV	DUPAGE	93	21
STA. FIRST STA.	TO STA. SECOND STA.	LINKS	SURFACE TRANSPORTATION FUNDING

CONTRACT NUMBER 83993



END RECONSTRUCTION STA. 225+42 (MATCH EXISTING)

END RECONSTRUCTION STA. 225+42 (MATCH EXISTING)



HOT-MIX ASPHALT PAVEMENT (FULL DEPTH), 9"  
HOT-MIX ASPHALT SURFACE COURSE, MIX "D", N70, 2"  
HOT-MIX ASPHALT BINDER COURSE, IL-19.0, N70, 7"  
AGGREGATE SUBGRADE, 12"

HOT-MIX ASPHALT PAVEMENT (FULL DEPTH), 10-3/4"  
HOT-MIX ASPHALT SURFACE COURSE, MIX "D", N70, 2"  
HOT-MIX ASPHALT BINDER COURSE, IL-19.0, N70, 8-3/4"  
AGGREGATE SUBGRADE, 12"

FULLERTON AVENUE EXISTING TOPOGRAPHY

FULLERTON AVENUE PROPOSED IMPROVEMENTS

- NOTE:
1. CURB AND GUTTER TRANSITION FROM TYPE B-6.18 TO EXISTING TYPE WILL BE PAID FOR AS "COMBINATION CONCRETE CURB AND GUTTER TYPE B-6.18."
  2. THE WATER MAINS SHALL BE RELOCATED IF A CONFLICT EXISTS WITH THE PROPOSED STORM SEWER. TO BE PAID FOR AS "REMOVE AND RELOCATE WATER MAIN."
  3. RESET BENCH MONUMENT BY AUTHORIZED SURVEYOR OR AGENT AS DIRECTED BY THE ENGINEER. THE RELOCATION SHOULD BE COORDINATED WITH DUPAGE COUNTY.

REVISIONS	
NAME	DATE

VILLAGE OF ADDISON

**ROADWAY PLAN**  
**FULLERTON AVENUE**  
STA. 220+00 TO 225+42

DATE: 11/26/2007  
DESIGNED BY: RTM  
TECHNICIAN: JRR  
CHECKED BY: JRV

20 0 20 HORIZ.  
5 5 VERT.  
SCALE IN FEET