

FILE NO.	SECTION	COUNTY	TOTAL SHEETS	SHEET NO.
1380	00-00084-00-PV	DUPAGE	93	49
STA.		TO STA.		
		SURFACE TRANSPORTATION FUNDING		

CONTRACT NUMBER 83993

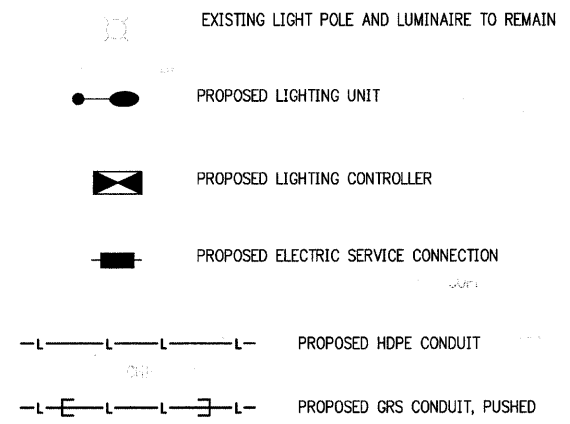
GENERAL NOTES

- IT SHALL BE THE CONTRACTOR'S RESPONSIBILITY TO MARK THE PROPOSED LOCATIONS OF ALL LIGHT POLE FOUNDATIONS, CENTER LINE OF TRENCH AND CONDUIT PUSHES FOR EXAMINATION AND CONFIRMATION WITH THE ENGINEER. THE EXACT LOCATIONS OF ALL ITEMS SHALL BE CONFIRMED WITH THE ENGINEER PRIOR TO STARTING WORK.
- THE CONTRACTOR SHALL MAKE SPECIAL NOTE OF THE REQUIREMENTS FOR GROUNDING. GROUNDING CONNECTIONS AT THE FOUNDATIONS SHALL BE EXOTHERMICALLY WELDED, AS SPECIFIED, AND SHALL BE INSPECTED AND APPROVED BY THE RESIDENT ENGINEER PRIOR TO POURING CONCRETE OR BACKFILLING, AS APPLICABLE.
- THE CONTRACTOR SHALL MAKE SPECIAL NOTE OF THE SPECIFIED REQUIREMENTS FOR BURIED WARNING TAPE, SPECIFIED AS PART OF "TRENCH AND BACKFILL FOR ROADWAY LIGHTING". THE INSTALLATION OF THE TAPE SHALL BE INSPECTED BY THE ENGINEER PRIOR TO BACKFILLING OPERATIONS.
- THE CONTRACTOR SHALL BE RESPONSIBLE FOR THE ESTABLISHMENT OF FINISHED GRADE. THE ENGINEER MAY ASSIST THE CONTRACTOR, AS APPLICABLE, BUT THE RESPONSIBILITY FOR COORDINATING THE FINISHED GRADE ELEVATION WITH THE TOP OF THE FOUNDATION HEIGHTS SHALL REMAIN WITH THE CONTRACTOR.
- NO LIGHT POLES SHALL BE ERECTED UNTIL THE RESPECTIVE FOUNDATIONS HAVE CURED, A MINIMUM OF SEVEN DAYS.
- TO MAINTAIN STRUCTURAL INTEGRITY OF THE LIGHT POLES WITH MAST ARMS, THEY SHALL NOT BE ERECTED AND LEFT TO STAND WITHOUT LUMINAIRES. NOTE THAT THE POLES WILL NOT BE PAID UNTIL THE LUMINAIRES ARE INSTALLED.
- NO EQUIPMENT OR MATERIAL SHALL BE DELIVERED TO THE JOB SITE PRIOR TO THE APPROVAL BY THE ENGINEER. ANY EQUIPMENT OR MATERIAL DELIVERED TO THE JOB SITE PRIOR TO APPROVAL SHALL BE REMOVED FROM THE JOB SITE AT THE CONTRACTOR'S EXPENSE.
- CONDUIT PUSHED AND IN TRENCH SHALL EXTEND FIVE (5) FEET BEYOND THE SHOULDER, CURB OR DRIVEWAY, AS APPLICABLE.
- THE CONTRACTOR SHALL PROVIDE A 3/4" X 10' COPPER CLAD GROUND ROD AT EACH LIGHT POLE AND HANDHOLE (REFER TO THE FOUNDATION DETAIL).
- ALL CONDUIT SHALL BE INSTALLED MIN. 30 INCHES BELOW FINISHED GRADE (UNLESS DIRECTED OTHERWISE) COMPLETE WITH WARNING TAPE. CONTRACTOR SHALL HAND DIG TEST HOLES FOR EVERY 1000 FT. OF TRENCHING FOR ENGINEER'S APPROVAL OF THE INSTALLATION.
- MATERIALS AND INSTALLATION METHODS SHALL COMPLY WITH CODES AND ORDINANCES OF FEDERAL, STATE AND LOCAL GOVERNING BODIES HAVING JURISDICTION. NATIONAL ELECTRICAL CODE (LATEST REVISION) SHALL BE A MINIMUM REQUIREMENT.
- IT IS CONTRACTOR'S RESPONSIBILITY TO COORDINATE THE LOCATION OF EXISTING UNDERGROUND UTILITIES PRIOR TO THE START OF CONSTRUCTION. CONTACT J.U.L.I.E. PRIOR TO THE START OF ANY EXCAVATION WORK.
- BEFORE INSTALLING STANDARD LIGHT POLES NEAR OVERHEAD FACILITIES, CALL COMED CO. FOR APPROVAL OF LOCATION.
- FOR LOCATION OF EXISTING UNDERGROUND MUNICIPAL UTILITIES, CALL THE VILLAGE OF ADDISON.
- MATERIAL QUANTITIES ARE APPROXIMATIONS ONLY. IT IS CONTRACTOR'S RESPONSIBILITY TO FIELD VERIFY ALL QUANTITIES PRIOR TO ORDERING MATERIAL.
- THE CONTRACTOR SHALL COORDINATE THE CONSTRUCTION AND STAGING WITH OTHER WORK BEING DONE IN THE SAME GENERAL AREA BY COMED. CONTRACTOR SHALL SET UP COORDINATION MEETINGS IF REQUIRED.
- A STAGING SCHEDULE FOR MATERIAL INSTALLATION, REMOVAL AND APPROXIMATE DATE OF PROPOSED ENERGIZING OF PERMANENT LIGHTING SHALL BE SUBMITTED PRIOR TO THE COMMENCEMENT OF WORK TO ASSURE COORDINATION WITH CONTRACT WORK SCHEDULE.

- COMMONWEALTH EDISON COMPANY SHALL BE CONTACTED AS SOON AS POSSIBLE AND NOTIFIED OF PENDING SERVICE CONNECTIONS AND INSTALLATIONS TO ENSURE TIMELY ENERGIZATION.
- PROPOSED NEW CONDUITS SHALL BE HDPE, UNLESS NOTED OTHERWISE.
- EACH WIRE SHALL BE IDENTIFIED AT EACH POLE BY APPROPRIATE CONTROLLER AND CIRCUIT NUMBER.
- CONTRACTOR SHALL SUBMIT "RECORD DRAWINGS" A MINIMUM OF 7 DAYS PRIOR TO THE FINAL INSPECTION. "RECORD DRAWINGS" SHALL BE UPDATED REGULARLY DURING CONSTRUCTION AND INDICATE ALL LIGHTING MATERIAL INSTALLATION WITH ANY CHANGES IN RED.
- ALL LANDSCAPING DISTURBED UNDER THIS CONTRACT SHALL BE RESTORED TO ORIGINAL CONDITION OR BETTER, TO THE SATISFACTION OF THE VILLAGE AND ENGINEER.
- CONTRACTOR SHALL NOT PROCEED WITH CUTTING OF TREES OR CLEARING OF RIGHT-OF-WAY WITHOUT WRITTEN NOTIFICATION AND APPROVED BY ENGINEER.
- CONTRACTOR TO VERIFY FOUNDATION BOLT PATTERNS PRIOR TO CONSTRUCTING FOUNDATIONS.
- QUANTITY OF PUSHED CONDUIT AND CONDUIT IN TRENCH ARE APPROXIMATE ONLY. CONTRACTOR SHALL FIELD VERIFY THE QUANTITIES PRIOR TO ORDERING THE MATERIAL AND INSTALL CONDUITS IN FULL COMPLIANCE WITH THE DETAILS AND SPECIFICATIONS.
- THE CONTRACTOR SHALL PROVIDE NEW PHOTOCELL. THE PHOTOCELL SHALL BE MOUNTED ON THE CLOSEST POLE TO THE PROPOSED LIGHTING CONTROLLER. PHOTOCELL SHALL MOUNT ON PLOE TOP, NOT LUMINAIRE. FURNISH WEATHER TIGHT ADAPTER FOR MOUNTING PHOTOCELL. PHOTOCELL CONTROL CABLES SHALL RUN INSIDE THE SAME RACEWAY AS THE LIGHTING CIRCUIT.
- THE CONTROLLER AND CIRCUIT DESIGNATIONS AS SHOWN ON THE DRAWINGS ARE FOR REFERENCE ONLY. EXACT DESIGNATIONS FOR DECALS SHALL BE AS DIRECTED BY THE OWNER.
- THE POLE DESIGNATIONS AS SHOWN ON THE DRAWINGS ARE FOR REFERENCE ONLY. EXACT DESIGNATION OF ALL NEW POLES SHALL BE AS DIRECTED BY THE OWNER.
- IT SHALL BE THE RESPONSIBILITY OF THE CONTRACTOR TO LOCATE, FLAG AND PROTECT ALL EXISTING UNDERGROUND UTILITIES PRIOR TO AND DURING CONSTRUCTION. ANY DAMAGE TO EXISTING UTILITIES DURING CONSTRUCTION SHALL BE REPAIRED IMMEDIATELY AT NO EXTRA COST TO THE VILLAGE. THIS WORK SHALL NOT BE PAID FOR SEPARATELY BUT SHALL BE CONSIDERED INCIDENTAL TO THE INSTALLATION OF THE PROPOSED CONDUIT, LIGHT POLE AND CONTROLLER FOUNDATIONS, AND HANDHOLES.
- UNLESS OTHERWISE INDICATED, ALL ITEMS AND WORK SHOWN ON THESE PLANS ARE PROPOSED NEW ITEMS OF WORK.
- CONTRACTOR'S STAGING AREA SHALL BE AS DIRECTED BY THE VILLAGE IN THE PRE-CONSTRUCTION MEETING.
- CONDUCTORS SHALL BE SPLICED IN LIGHTING CONTROLLERS, LIGHT POLE BASES, AND HANDHOLES ONLY. NO SPLICES SHALL BE LOCATED BELOW GRADE EXCEPT IN HANDHOLES.
- ELECTRICAL WORK SHALL BE COORDINATED WITH ALL OF THE WORK REQUIRED IN THIS CONTRACT. LACK OF COORDINATION WITH OTHER WORK INCLUDED IN THIS CONTRACT, WHETHER OR NOT SHOWN ON THE ELECTRICAL PLANS, SHALL NOT BE CAUSE FOR ADDITIONAL COMPENSATION.

ITEM	UNIT	TOTAL QUANTITY
GROUND ROD, 3/4" DIA. X 10 FT.	EACH	1
ELECTRIC SERVICE INSTALLATION	EACH	1
ELECTRIC UTILITY SERVICE CONNECTION	L SUM	1
CONDUIT IN TRENCH, 1 1/2" DIA., GALVANIZED STEEL	FOOT	50
CONDUIT IN TRENCH, 1 1/2" DIA., HIGH DENSITY POLYETHYLENE, COILABLE	FOOT	3454
CONDUIT IN TRENCH, 2" DIA., HIGH DENSITY POLYETHYLENE, COILABLE	FOOT	700
CONDUIT PUSHED, 4" DIA., GALVANIZED STEEL	FOOT	875
HANDHOLE	EACH	1
TRENCH AND BACKFILL FOR ELECTRICAL WORK	FOOT	3454
ELECTRIC CABLE IN CONDUIT, 600V (EPR-TYPE RHW) 3-1/C NO. 12	FOOT	103
ELECTRIC CABLE IN CONDUIT, 1/C #8 GROUND	FOOT	4154
ELECTRIC CABLE IN CONDUIT, 600V (XLP-TYPE USE) 3-1/C NO. 2	FOOT	80
ELECTRIC CABLE IN CONDUIT, 600V (XLP-TYPE USE) 1/C NO. 2	FOOT	1088
ELECTRIC CABLE IN CONDUIT, 600V (XLP-TYPE USE) 1/C NO. 4	FOOT	9660
ELECTRIC CABLE IN CONDUIT, 600V (XLP-TYPE USE) 1/C NO. 8	FOOT	5867
LUMINAIRE, SODIUM VAPOR, HORIZONTAL MOUNT, 250 WATT	EACH	29
LIGHTING CONTROLLER, SPECIAL	EACH	1
LIGHTING CONTROLLER PHOTOCELL RELAY	EACH	1
LIGHT POLE, ALUMINUM, 25 FT. M.H., 10 FT. MAST ARM	EACH	29
LIGHT POLE FOUNDATION, 24" DIAMETER	FOOT	80
LIGHT POLE FOUNDATION, 24" DIAMETER, OFFSET	FOOT	315
MAINTENANCE OF LIGHTING SYSTEM	MO	1
REMOVAL OF EXISTING LIGHTING UNIT, SALVAGE	EACH	6
LIGHTING FOUNDATION REMOVAL	EACH	8
REMOVE ELECTRIC CABLE FROM CONDUIT	FOOT	1325
BREAKAWAY DEVICE, TRANSFORMER BASE, 11.5 INCH BOLT CIRCLE	EACH	9

LEGEND



ABBREVIATIONS

- AWG AMERICAN WIRE GAUGE
- A/C AERIAL CABLE
- C CONDUIT
- CCT CIRCUIT
- DIA DIAMETER
- E ELECTRICAL
- EX EXISTING
- GND GROUND
- GRS GALVANIZED RIGID STEEL
- KW KILOWATT
- REL RELOCATED
- REM REMOVED
- RGS RIGID GALVANIZED STEEL
- P PROPOSED
- PVC POLY VINYL CHLORIDE (SCHEDULE 80 CONDUIT)
- STA STATION
- HDPE HIGH-DENSITY POLYETHYLENE

REVISIONS	
NAME	DATE

VILLAGE OF ADDISON
ELECTRICAL GENERAL NOTES, LEGEND
 FULLERTON AVENUE

DATE: 11/26/2007
 DESIGNED BY: FEJ
 TECHNICIAN: FEJ
 CHECKED BY: DEM